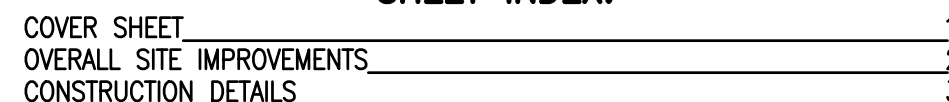


FAIRFAX COUNTY, VIRGINIA



FILE: 19-212

ALL CONSTRUCTION SHALL CONFORM TO THE CURRENT STANDARDS AND SPECIFICATIONS OF LOUDOUN COUNTY.
© 2020 R.C. FIELDS & ASSOCIATES, INC.

= DEGREES
= MINUTES (OR FEET)
= SECONDS (OR INCHES)
%= PERCENT
#= NUMBER
@= AT
lbs.= POUNDS
A= ARC
AC= ACRE
AD= ADVERSE
APPROX= APPROXIMATE W/ DISABILITIES ACT
APPROX= APPROXIMATE
BF= BOTTOM OF CURB
BF= BASEMENT FLOOR
BLDG.= BUILDING
BM= BENCHMARK
BOLL.= BOLLARD
CATV= CABLE UTILITY
CL= CLASS
CLEAR= CLEARANCE
CLF= CHAIN LINK FENCE
CMP= CORRUGATED METAL PIPE
C.I.= CURB INLET
C.O.= CLEAN OUT
CONC.= CONCRETE
C&G= CURB & GUTTER
DB= DEED BOOK
DIP= DUCTILE IRON PIPE
DOM= DOMESTIC
DSP= DEVELOPMENT SITE PLAN
DSUP= DEVELOPMENT SPECIAL USE PERMIT
DU= DWELLING UNIT
E= EAST
EBOX= ELECTRICAL BOX
ESMT= EASEMENT
EP= EDGE OF PAVEMENT
EVE= EMERGENCY VEHICLE EASEMENT
EX= EXISTING
FDC= FIRE DEPT. CONNECTION
FF= FINISH FLOOR
FH= FIRE HYDRANT
FT.= FEET
GL= GROUND LIGHT
G/V= GAS VALVE
G/M= GAS METER
G.I.= GRATE INLET
H.C.= HEADER CURB
HDCP= HANDICAP
HDPE= HIGH DENSITY POLYETHYLENE
HPS= HIGH PRESSURE SODIUM
IPF= IRON PIPE FOUND
INV.= INVERT
INSTR.= INSTRUMENT
L= LUMENS
LOC.= LOCATION
LP= LIGHT POLE
MAX.= MAXIMUM
MH= MANHOLE
MIN.= MINIMUM
MPH= MILES PER HOUR
MW= MONITORING WELL
N= NORTH
OHW= OVERHEAD WIRE
PN= PANEL
PG= PAGE
PP= POWER POLE
PROP= PROPOSED
PVC= POLYVINYL CHLORIDE
R= RADIUS
RCP= RE-ENFORCED CONCRETE PIPE
RELOC.= RELOCATED
RET.= RETAINING
RESID= RESIDENTIAL
R/W= RIGHT-OF-WAY
S= SOUTH
S&F= SANITARY SEWER
S.F.= SQUARE FEET
SO.FT.= SQUARE FEET
STM.= STORM SEWER
STR.= STRUCTURE
SUB= SUBDIVISION PLAN
TBS= TO BE REMOVED
TBR= TO BE SAVED
T.M.= TAX MAP
TMH= TELEPHONE MANHOLE
TC= TOP OF CURB
TW= TOP OF WALL
TRAF.SIG.= TRAFFIC SIGNAL
TYP= TYPICAL
UGE= UNDERGROUND ELECTRIC
UP= UTILITY POLE
VCS= VIRGINIA COORDINATE SYSTEM
VPD= VEHICLES PER DAY
W= WEST
W.= WEST
W.S.E.= WATER SURFACE ELEVATION
WV= WATER VALVE
WM= WATER METER
W.W.= WINDOW WELL

ITEM	EXISTING	PROPOSED
CURB & GUTTER		
SIDEWALK		
FIRE HYDRANT		
STRUCTURES		
WATER MAINS		
GAS MAINS		
TELEPHONE LINES		
STORM SEWER		
SANITARY SEWER		
PAVING		
FENCES		
POWER LINES		
SPOT ELEVATIONS		
CONTOURS		
BUILDING ENTRANCES		
UTILITY POLE		
LIGHT POLE		
LIMITS OF DISTURBANCE		

1. TAX MAP: #028-1-01-0009
2. ZONE: R-1
3. OWNER: NORTHERN VIRGINIA REGIONAL PARK AUTHORITY
5400 OX ROAD
FAIRFAX STATION, VA. 22039
DB: 5438 PG: 286
4. TOPOGRAPHIC SURVEY FIELD RUN BY THIS FIRM. VERTICAL DATUM = NGVD '88 PER GPS DATA REFERENCED TO THE RTK NETWORK OF LEICA, SMARTNET.
5. TITLE REPORT NOT FURNISHED, THUS ALL EASEMENTS MAY NOT BE SHOWN.
6. PLAT SUBJECT TO RESTRICTIONS OF RECORD.
7. TOTAL SITE AREA = 942,259 SQ. FT. = 21.6313 ACRES
8. LIMITS OF DISTURBANCE = 4,715 SQ. FT. = 0.1082 ACRES

THIS TOPOGRAPHIC SURVEY WAS COMPLETED UNDER THE DIRECT AND RESPONSIBLE CHARGE OF ROBERTO TORRES, LS, FROM AN ACTUAL GROUND SURVEY MADE UNDER MY SUPERVISION; THE IMAGERY AND/OR ORIGINAL DATA WAS OBTAINED ON DECEMBER 4, 2019; AND THIS PLAT, MAP OR DIGITAL GEOSPATIAL DATA INCLUDING METADATA MEETS MINIMUM ACCURACY STANDARDS UNLESS OTHERWISE NOTED.



THIS DRAWING IS A SERVICE DOCUMENT OF R.C. FIELDS & ASSOCIATES, INC. AND MAY NOT BE USED OR REPRODUCED WITHOUT THE WRITTEN PERMISSION OF THE ENGINEER AND/OR LAND SURVEYOR.

EXISTING UTILITIES SHOWN ON THIS PLAN TAKEN FROM AVAILABLE RECORDS AND/OR FROM FIELD OBSERVATIONS. FOR EXACT LOCATIONS OF EXISTING UNDERGROUND UTILITIES, NOTIFY "MISS UTILITY" AT 1-800-552-7001, 72 HOURS BEFORE THE START OF ANY EXCAVATION OR CONSTRUCTION.

LOCATION AND DEPTH OF ALL EXISTING UNDERGROUND UTILITIES TO BE VERIFIED BY CONTRACTOR PRIOR TO CONSTRUCTION. INTERFERENCE OR DISRUPTION OF SAME WILL NOT BE THE RESPONSIBILITY OF THIS OFFICE.

ALL CONSTRUCTION SHALL CONFORM TO THE CURRENT STANDARDS AND SPECIFICATIONS OF LOUDOUN COUNTY.

© 2020 R.C. FIELDS & ASSOCIATES, INC.


RC FIELDS

& ASSOCIATES, INC.

ENGINEERING • LAND SURVEYING • PLANNING

700 S. Washington Street, Suite 220 www.rcfieldsoc.com

Alexandria, Virginia 22314 (703) 549-6422



ACCESSIBILITY IMPROVEMENTS
ON A PORTION OF THE PROPERTY OF
MEADOWLARK GARDENS REGIONAL PARK
(DB 5438; PG 286)
(9600 MEADOWLARK GARDENS)
HUNTER MILL DISTRICT
FAIRFAX COUNTY, VIRGINIA

DATE	REVISION	

DESIGN: NRR
 CHECKED: ACS
 SCALE: AS NOTED
 DATE: MAR. 9, 2020

OVERALL SITE IMPROVEMENTS

SHEET 2 OF 3
 FILE: 19-212

