

LOUDOUN COUNTY, VIRGINIA

LANDSCAPE
PLAN

NOTES:

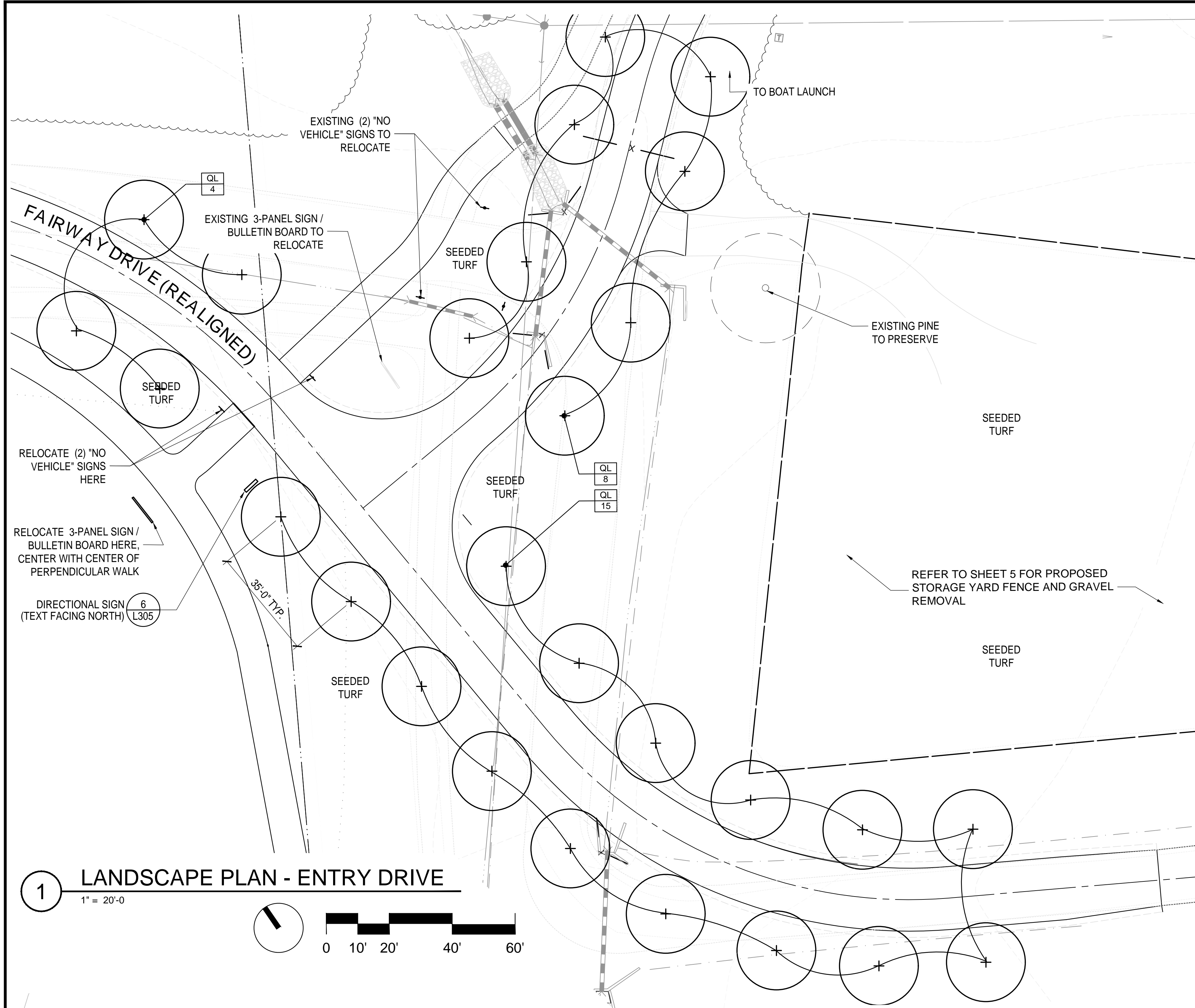
1. MEET REQUIREMENTS OF ANSI Z60.1, LATEST ADDITION, FOR ALL PLANT MATERIAL.
2. QUANTITIES GIVEN ARE FOR INFORMATION ONLY. CONTRACTOR IS RESPONSIBLE FOR MEETING THE DESIGN INTENT, AS INDICATED ON PLANTING PLANS.
3. ALL PLANTS ARE TO BE HEALTHY, FULL, BALANCED, AND EXCEPTIONALLY HEAVY.
4. PROVIDE TURF PER SPECIFICATIONS IN ALL DISTURBED AREAS NOT OTHERWISE PLANTED OR PAVED.

7

$$1'' = 20'-0''$$

$$1'' = 10^{-6}$$


$$1'' = 10'-0$$



1 LANDSCAPE PLAN - ENTRY DRIVE
1" = 20'-0"

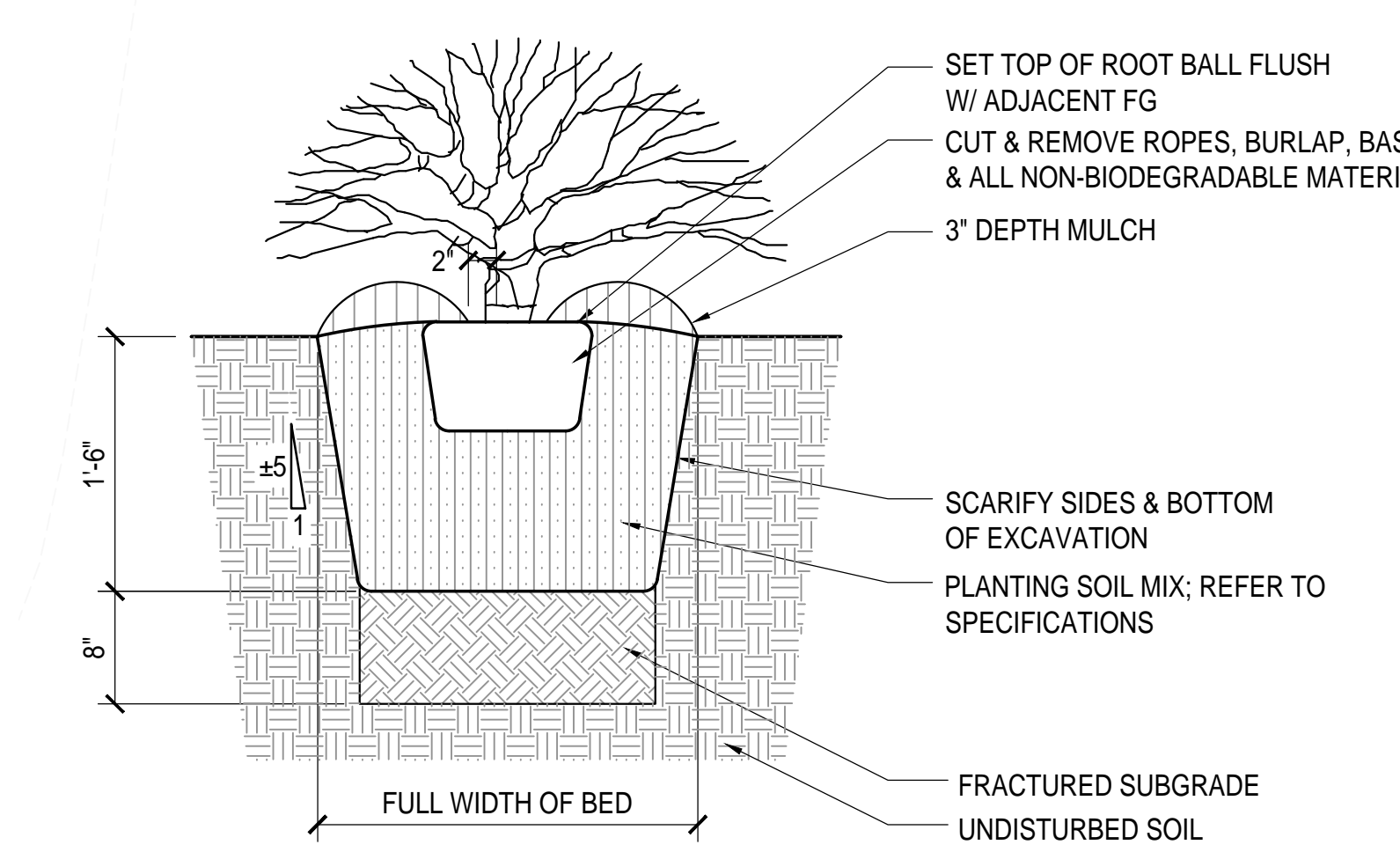
2017-07-07 17:22

PLANT_SCHEDULE_ENTRY_DRIVE

CANOPY TREES	QTY	BOTANICAL NAME	COMMON NAME	SIZE	TYPE	SPACING	REMARKS
QL	27	Quercus lyrata	Overcup Oak	3" CAL	B&B	As Shown	MATCHED SPECIMENS
EVERGREEN TREES	QTY	BOTANICAL NAME	COMMON NAME	SIZE	TYPE	SPACING	REMARKS
SHRUBS	QTY	BOTANICAL NAME	COMMON NAME	SIZE	TYPE	SPACING	REMARKS
GROUND COVERS	QTY	BOTANICAL NAME	COMMON NAME	SIZE	TYPE	SPACING	REMARKS

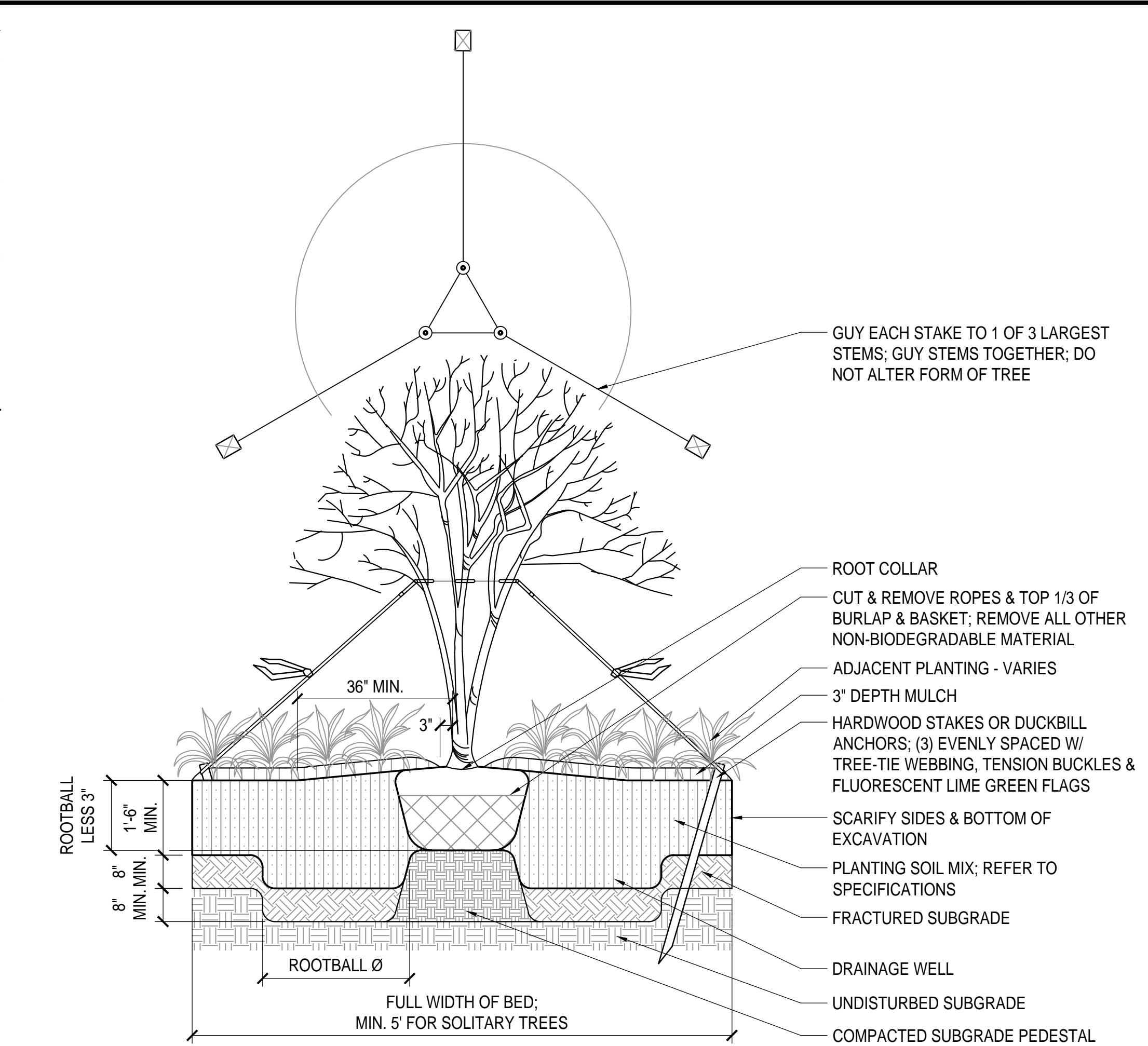
- NOTES:
- MEET REQUIREMENTS OF ANSI Z60.1, LATEST ADDITION, FOR ALL PLANT MATERIAL.
 - QUANTITIES GIVEN ARE FOR INFORMATION ONLY. CONTRACTOR IS RESPONSIBLE FOR MEETING THE DESIGN INTENT, AS INDICATED ON PLANTING PLANS.
 - ALL PLANTS ARE TO BE HEALTHY, FULL, BALANCED, AND EXCEPTIONALLY HEAVY.
 - PROVIDE TURF PER SPECIFICATIONS IN ALL DISTURBED AREAS NOT OTHERWISE PLANTED OR PAVED

5 PLANT SCHEDULE



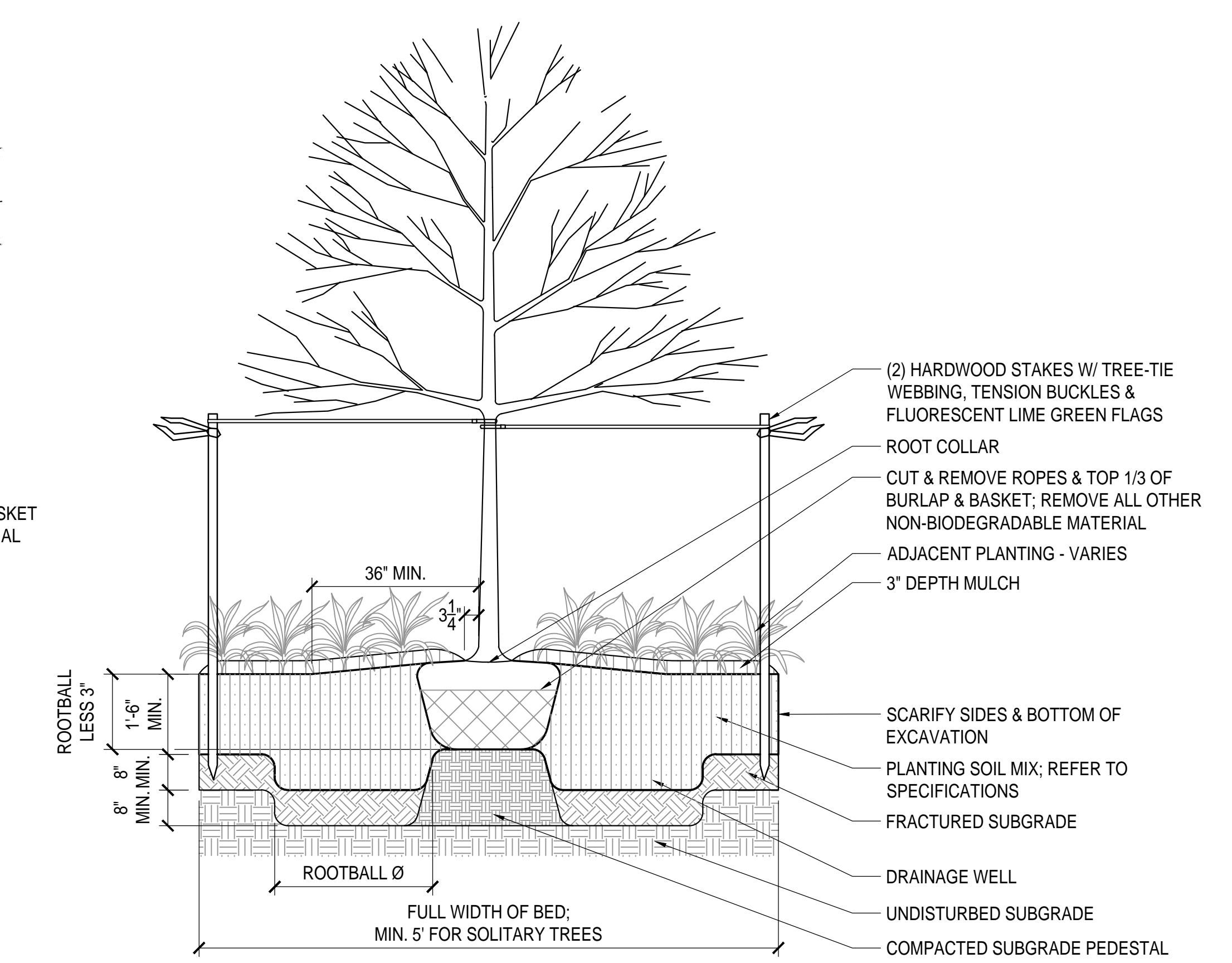
- NOTES:
- FOR CONTAINER-GROWN MATERIAL, REMOVE CONTAINER WITHOUT CRACKING ROOT BALL AND MAKE (3) 1" DEEP VERTICAL CUTS, EQUALLY SPACED ABOUT ROOT BALL.

4 SHRUB PLANTING



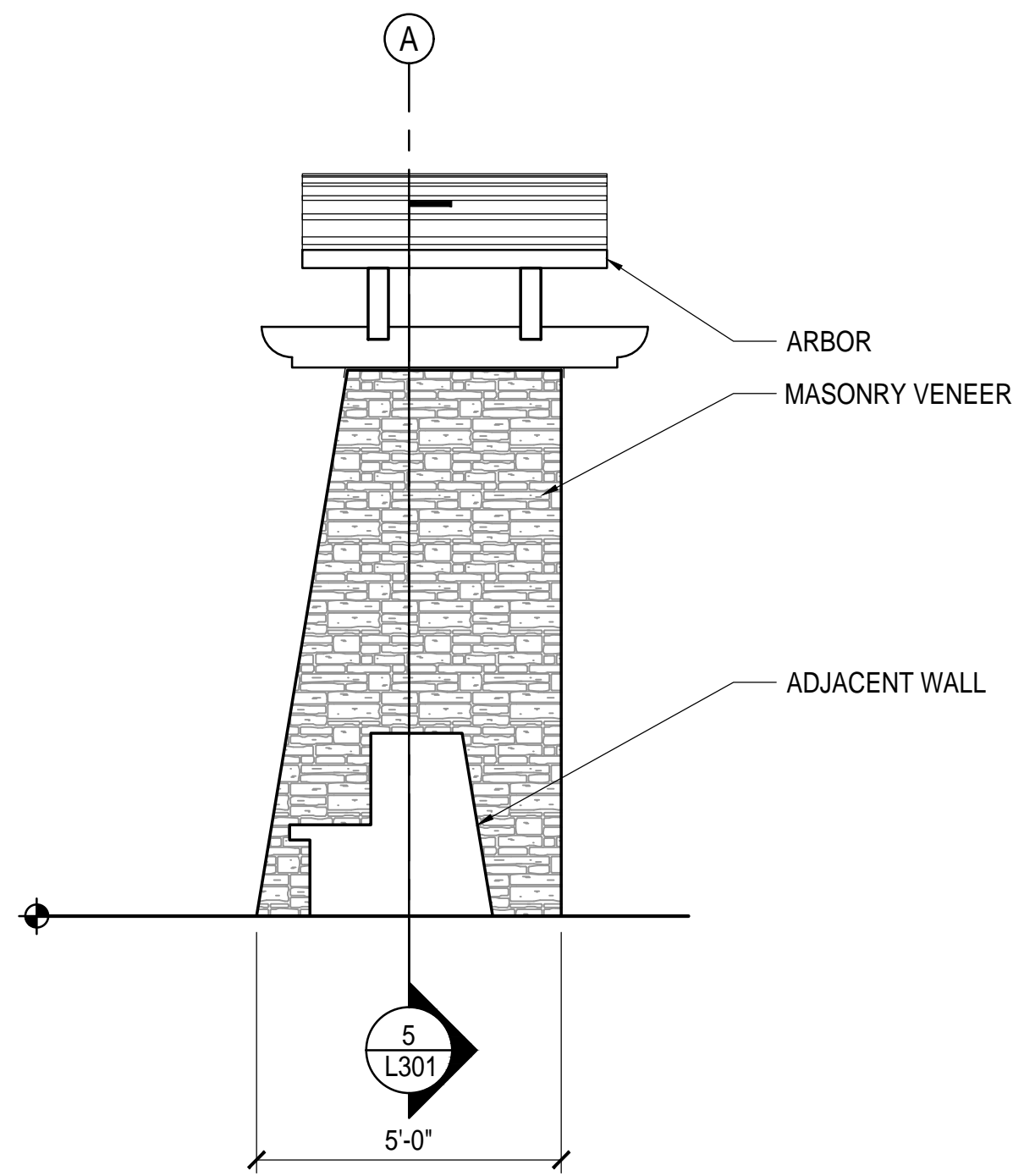
- NOTES:
- FOR TREES MORE THAN 6" CALIPER, PROVIDE CABLE GUYS. PROVIDE TREE-TIE WEBBING AT CONTACT POINTS WITH TRUNK. PROVIDE (1) TURNBUCKLE PER GUY. ALLOW ENOUGH SLACK TO AVOID RIGID RESTRAINT OF TREE.

2 MULTI-STEM TREE PLANTING

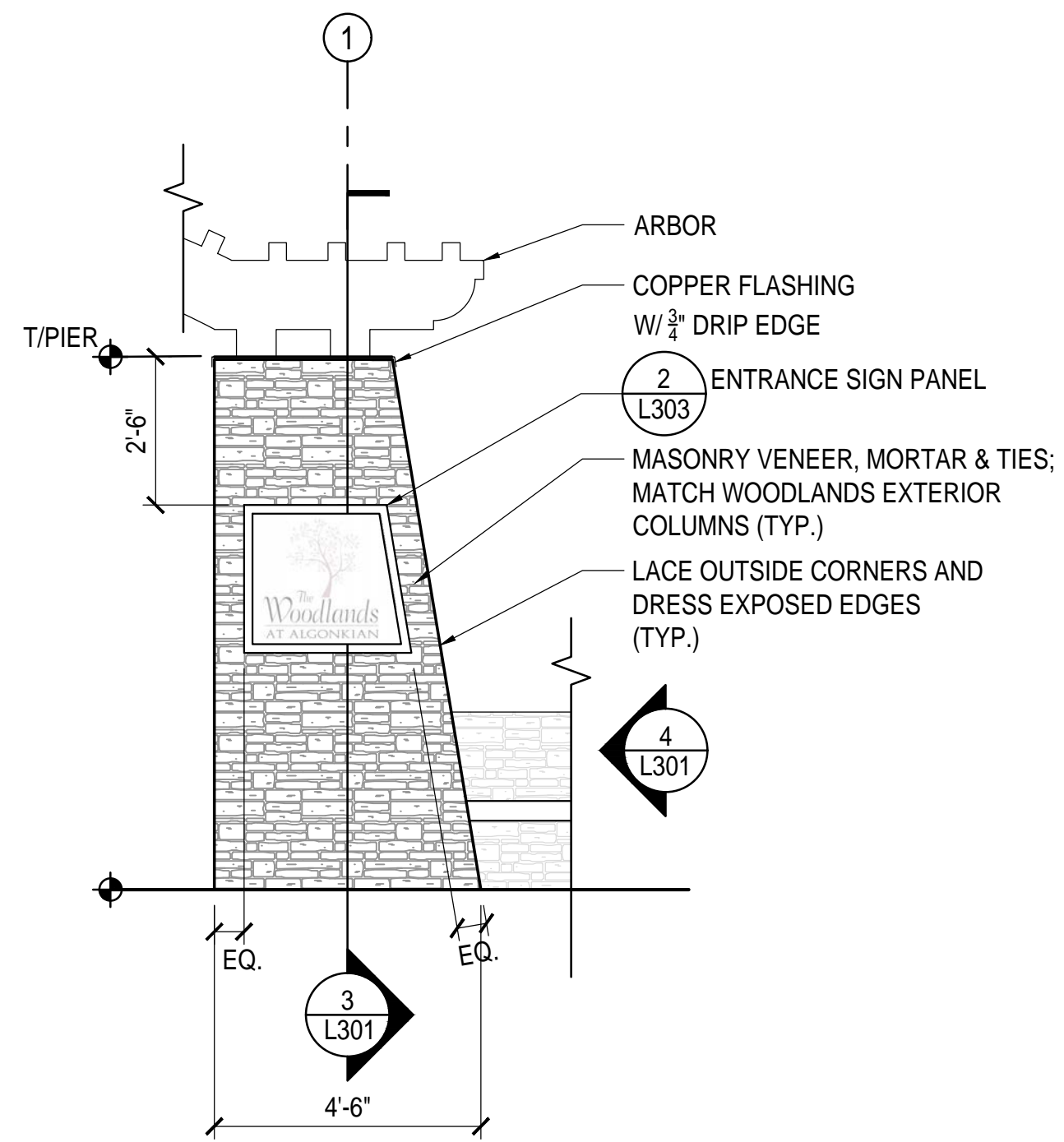


- NOTES:
- FOR TREES MORE THAN 6" CALIPER, PROVIDE CABLE GUYS. PROVIDE TREE-TIE WEBBING AT CONTACT POINTS WITH TRUNK. PROVIDE (1) TURNBUCKLE PER GUY. ALLOW ENOUGH SLACK TO AVOID RIGID RESTRAINT OF TREE.

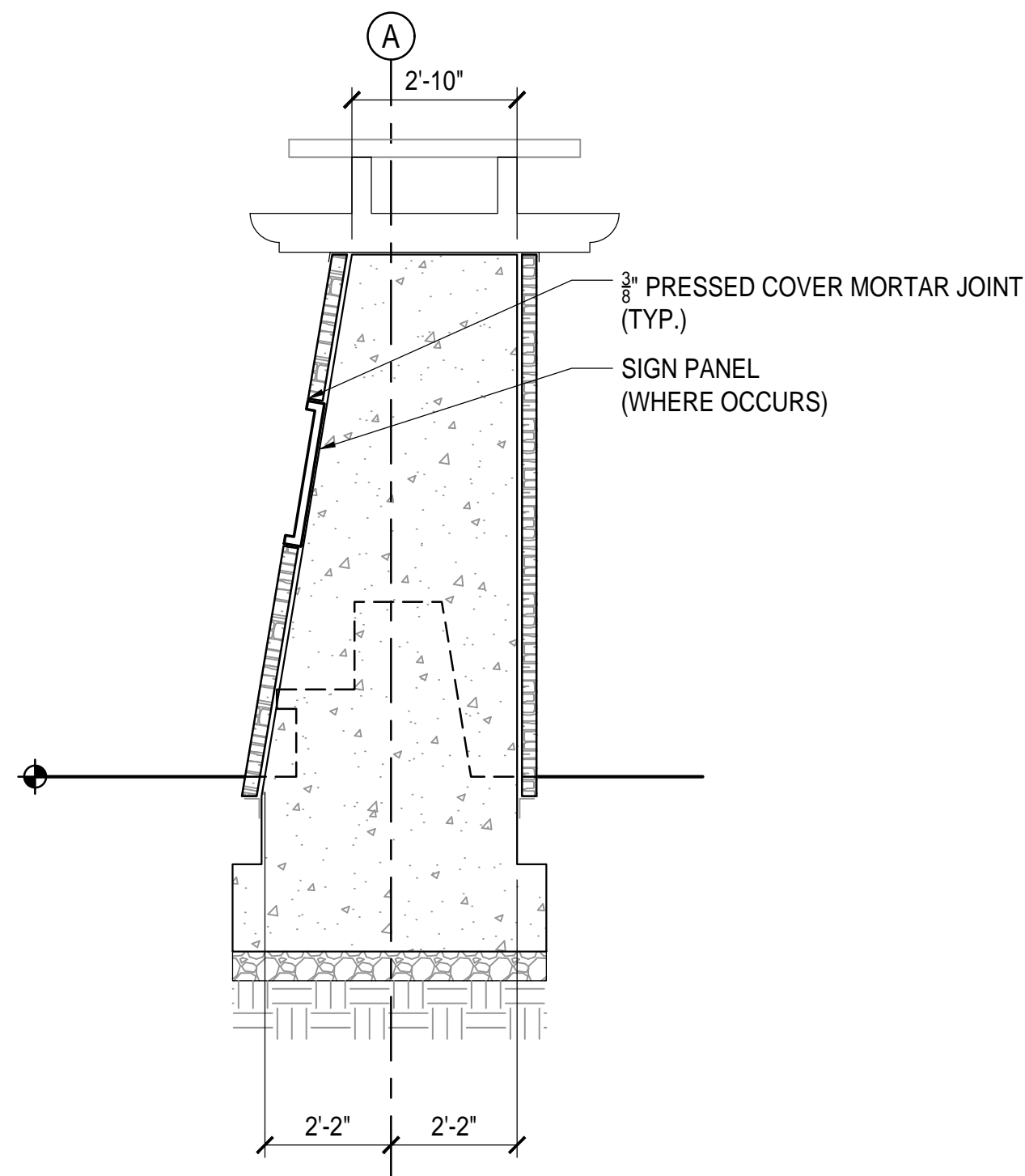
3 SINGLE STEM TREE PLANTING



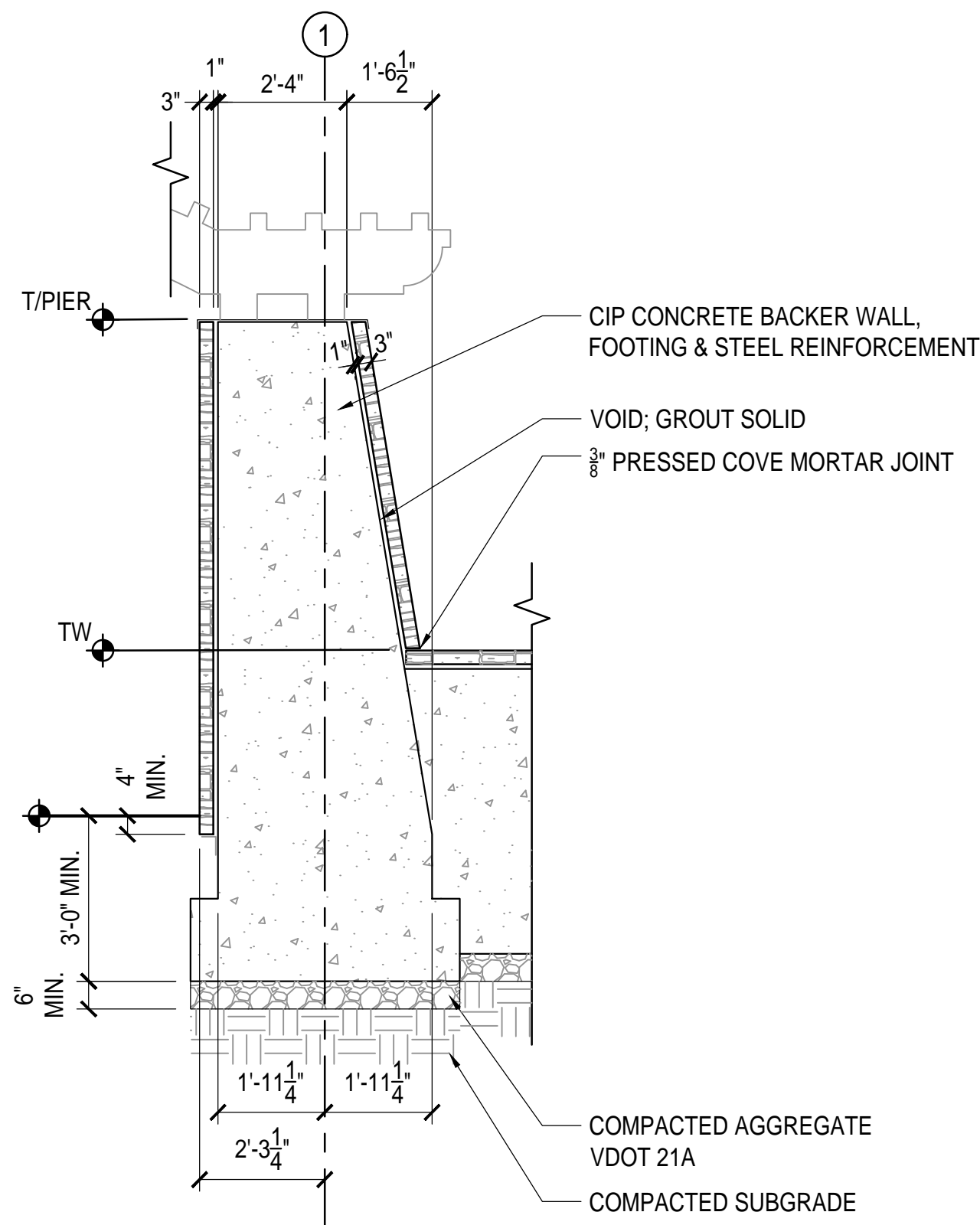
4 SECTION/ELEVATION
3/8" = 1'-0"



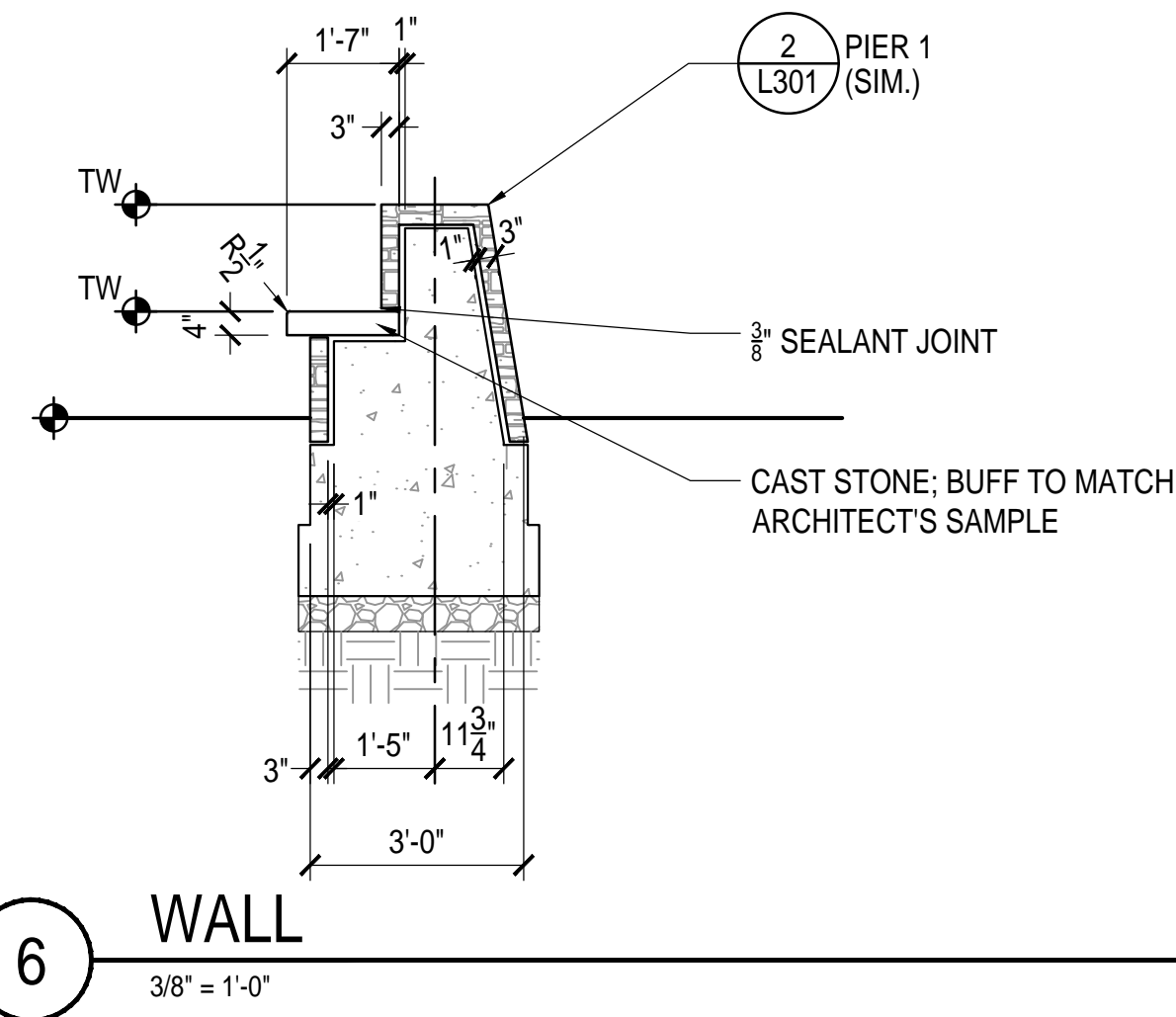
2 PIER 1
3/8" = 1'-0"



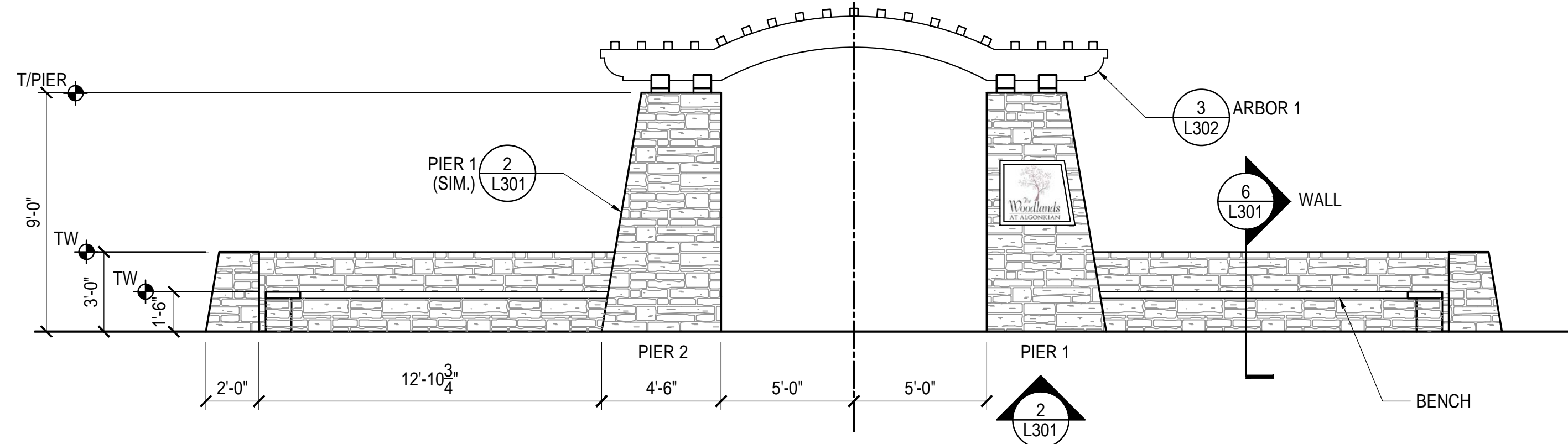
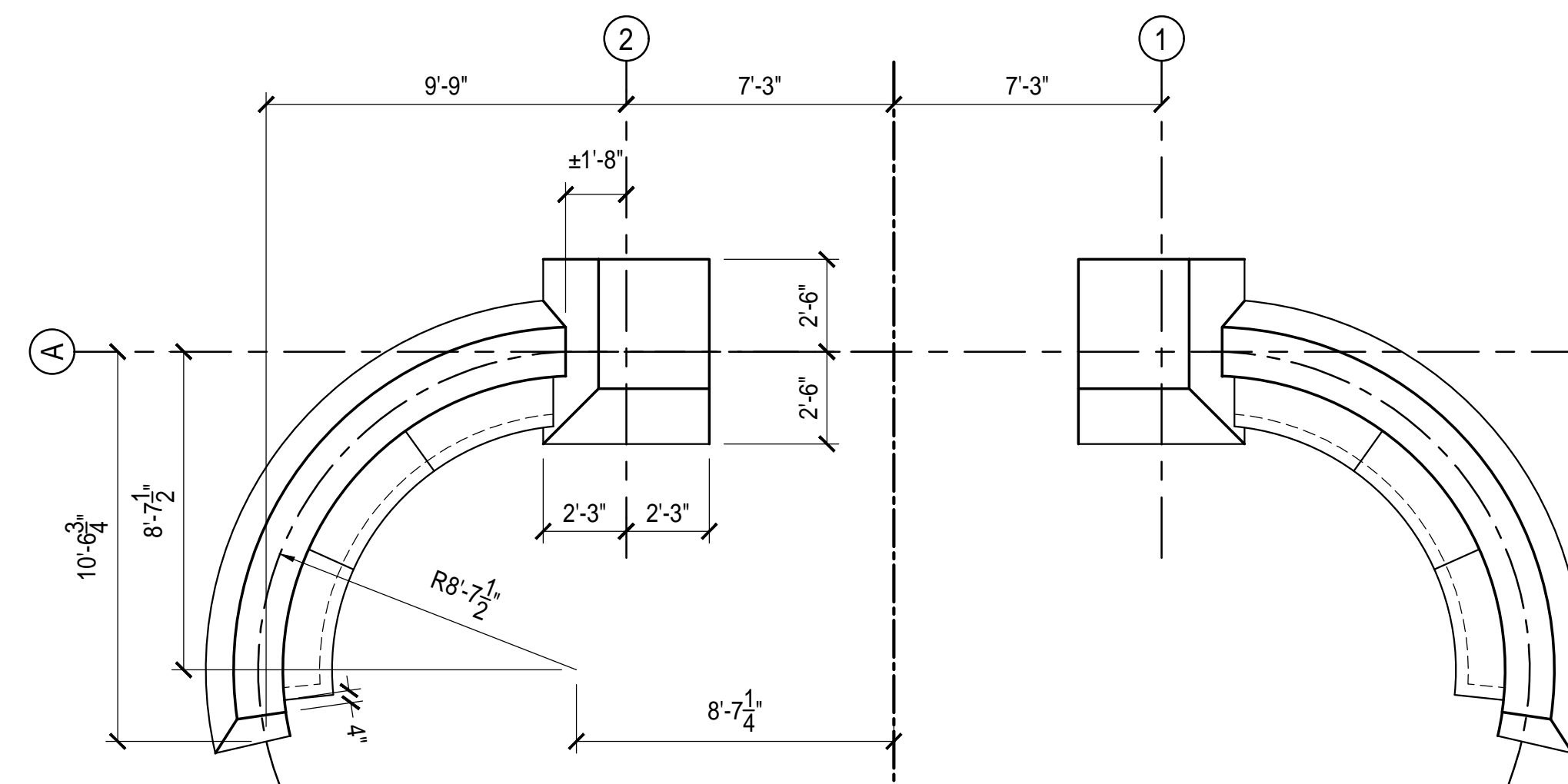
5 SECTION
3/8" = 1'-0"



3 SECTION
3/8" = 1'-0"



6 WALL
3/8" = 1'-0"



NOTES:
1. MASONRY AND CIP CONCRETE STRUCTURES DEPICTED HEREIN CONSTITUTE A DELEGATED DESIGN. PROVIDE STRUCTURAL DRAWINGS SEALED BY A VA-LICENSED STRUCTURAL ENGINEER FOR ALL WALLS, PIERS, FOOTINGS, REINFORCEMENT, AND APPURTENANCES FOR REVIEW AND ADJUSTMENT PRIOR TO CONSTRUCTION.

1 ENTRANCE FEATURE - EXTENDED ELEVATION
1/4" = 1'-0"

LSG LANDSCAPE ARCHITECTURE

1775 GREENSBORO STATION PL
SUITE 110
TYSONS, VIRGINIA 22102
703-821-2045

ALGONKIAN WOODLAND ENTRANCE

LOUDOUN COUNTY, VIRGINIA

CONSTRUCTION DETAILS

FOR BID AUGUST 8, 2018

No.	Description	Date

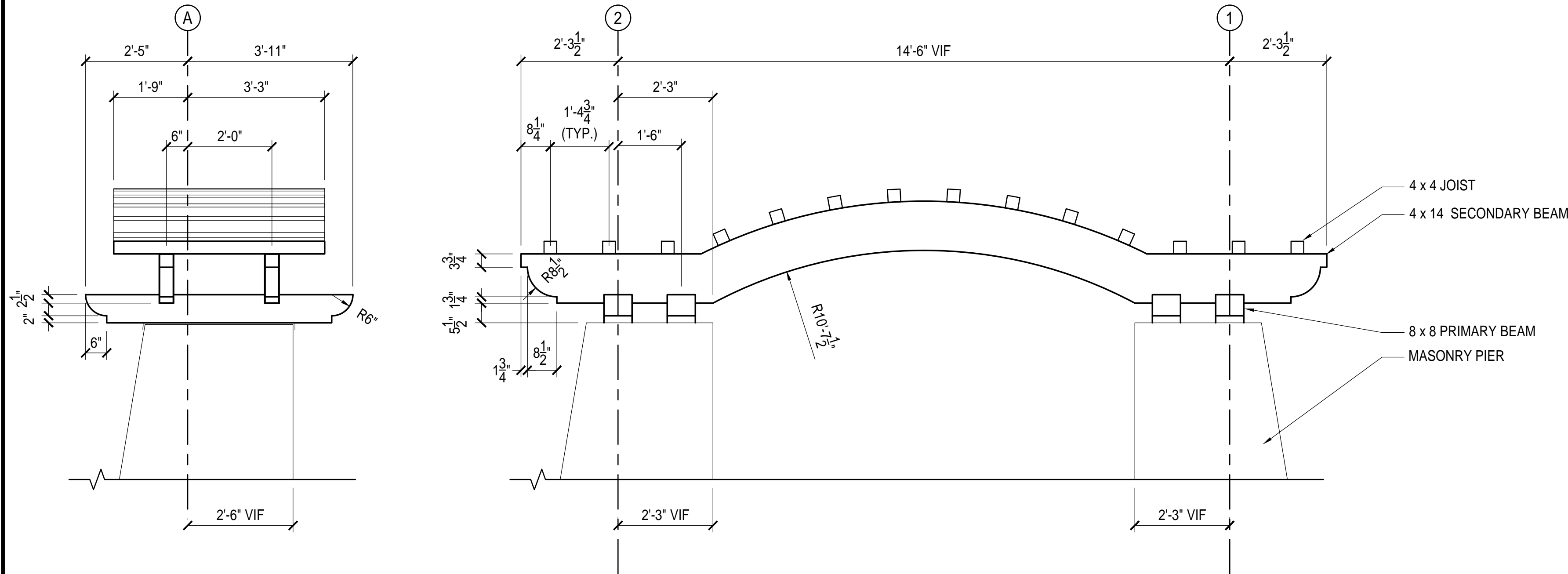
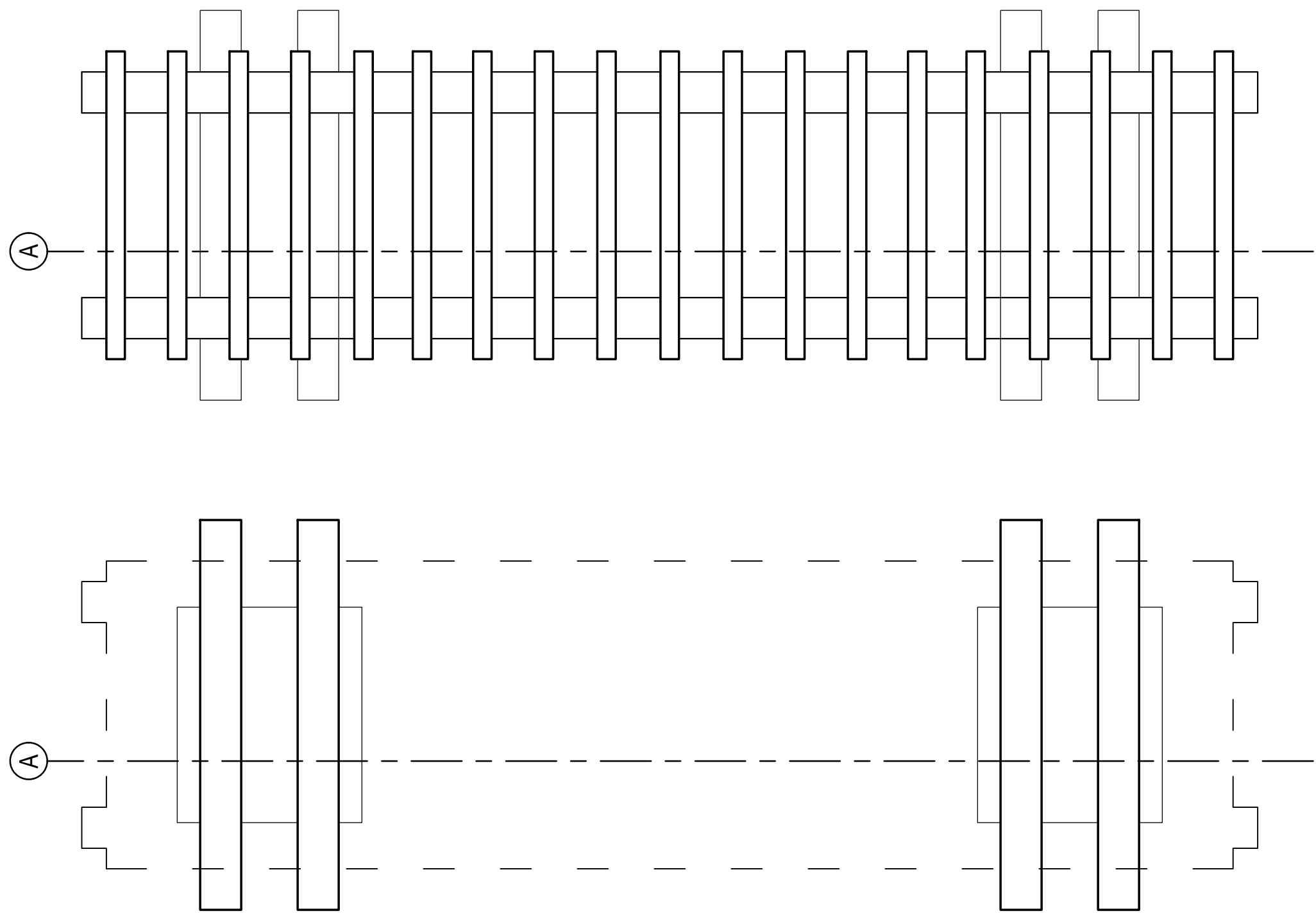
Project Number: 16064.01
Scale: AS SHOWN
Drawn By: DN
Checked By:
Date: AUGUST 8, 2018

Sheet No. L301

ALGONKIAN
WOODLAND
ENTRANCE

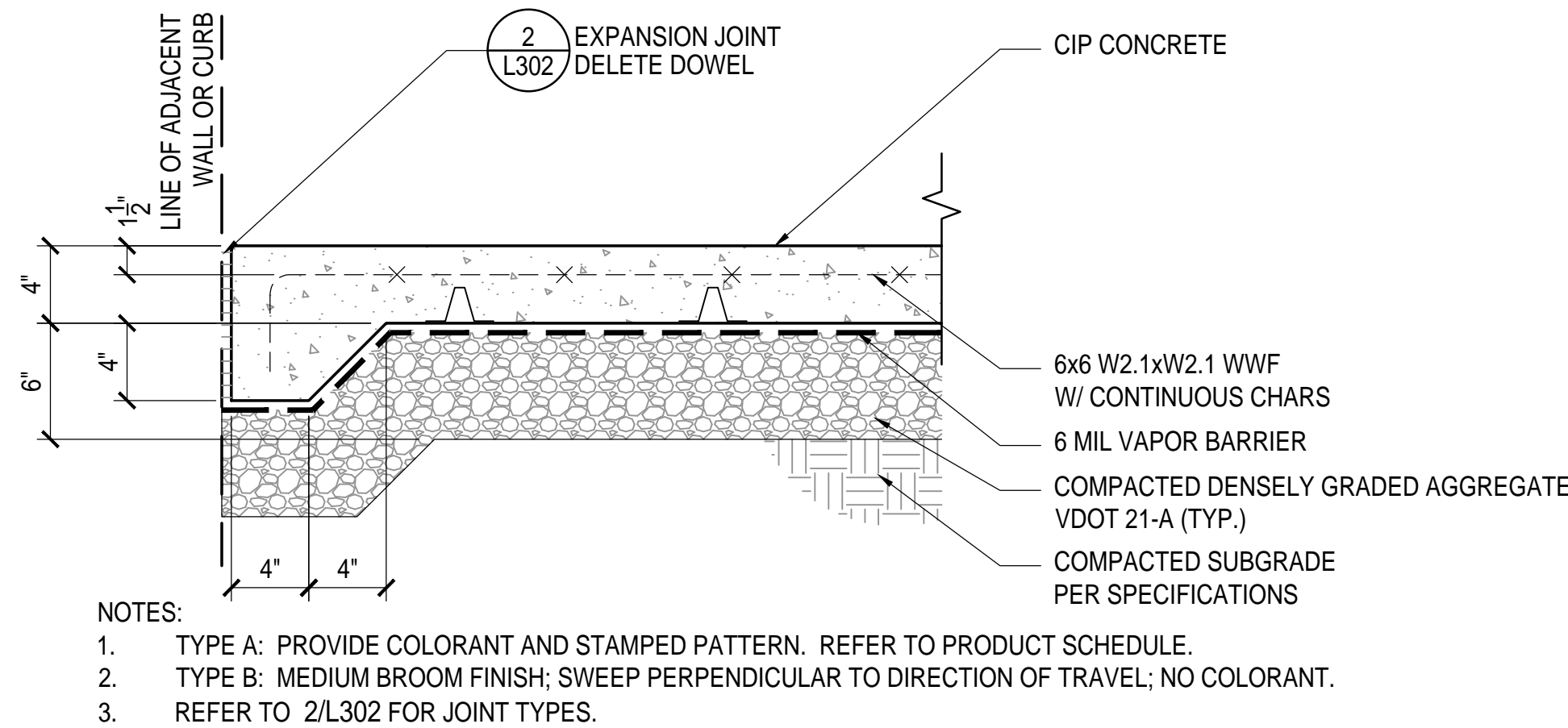
LOUDOUN COUNTY, VIRGINIA

CONSTRUCTION
DETAILS



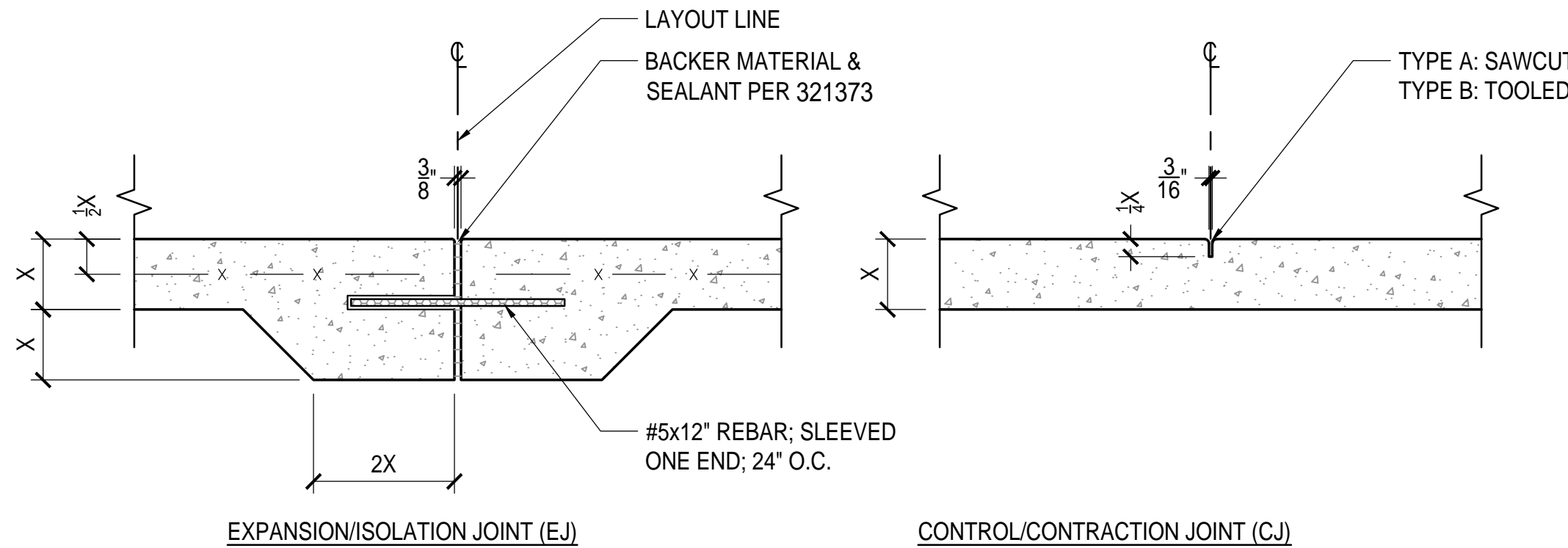
- NOTES:
1. ARBOR CONSTITUTES A DELEGATED DESIGN. PROVIDE SHOP DRAWINGS FOR STRUCTURE DEPICTED HEREIN, INCLUDING ANCHORAGE DEVICES, SEALED BY A VA-LISENCED STRUCTURAL ENGINEER FOR REVIEW AND ADJUSTMENT PRIOR TO FABRICATION.
 2. ARBOR STRUCTURAL ELEMENTS ARE STAIN- AND FADE-RESISTANT EXTRUDED SOLID POLYMER VINYL.
 3. FINISH ALL EXPOSED ENDS TO MATCH FACES AND FINISHED EDGES.
 4. PROVIDE STAINLESS STEEL CONCEALED FASTENERS.

3 ARBOR 1
1/2" = 1'-0"



- NOTES:
1. TYPE A: PROVIDE COLORANT AND STAMPED PATTERN. REFER TO PRODUCT SCHEDULE.
 2. TYPE B: MEDIUM BROOM FINISH; SWEEP PERPENDICULAR TO DIRECTION OF TRAVEL; NO COLORANT.
 3. REFER TO 2/L302 FOR JOINT TYPES.

1 CONCRETE PAVING
1 1/2" = 1'-0"



- NOTES:
1. INSTALL CONTROL JOINTS AT EQUAL INTERVALS OF 5'-0" EACH WAY UNLESS OTHERWISE INDICATED.
 2. INSTALL EXPANSION JOINTS @ 20'-0" INTERVALS MAX. EACH WAY, UNLESS OTHERWISE INDICATED, AND WHERE SLAB MEETS ANY ADJACENT STRUCTURE.
 3. TOOL EXPANSION JOINT & TOOLED CONTRACTION JOINT EXPOSED EDGES W/ 3/16" RADIUS.
 4. INSTALL SELF-LEVELING SEALANT AT EJ'S OR TOOL PER 321373 FLUSH W/ ADJACENT FG.

2 CONCRETE JOINTING
1 1/2" = 1'-0"

ALGONKIAN
WOODLAND
ENTRANCE

LOUDOUN COUNTY, VIRGINIA

CONSTRUCTION
DETAILS

FOR BID AUGUST 8, 2018

No. Description Date

Revisions

Project Number: 16064.01

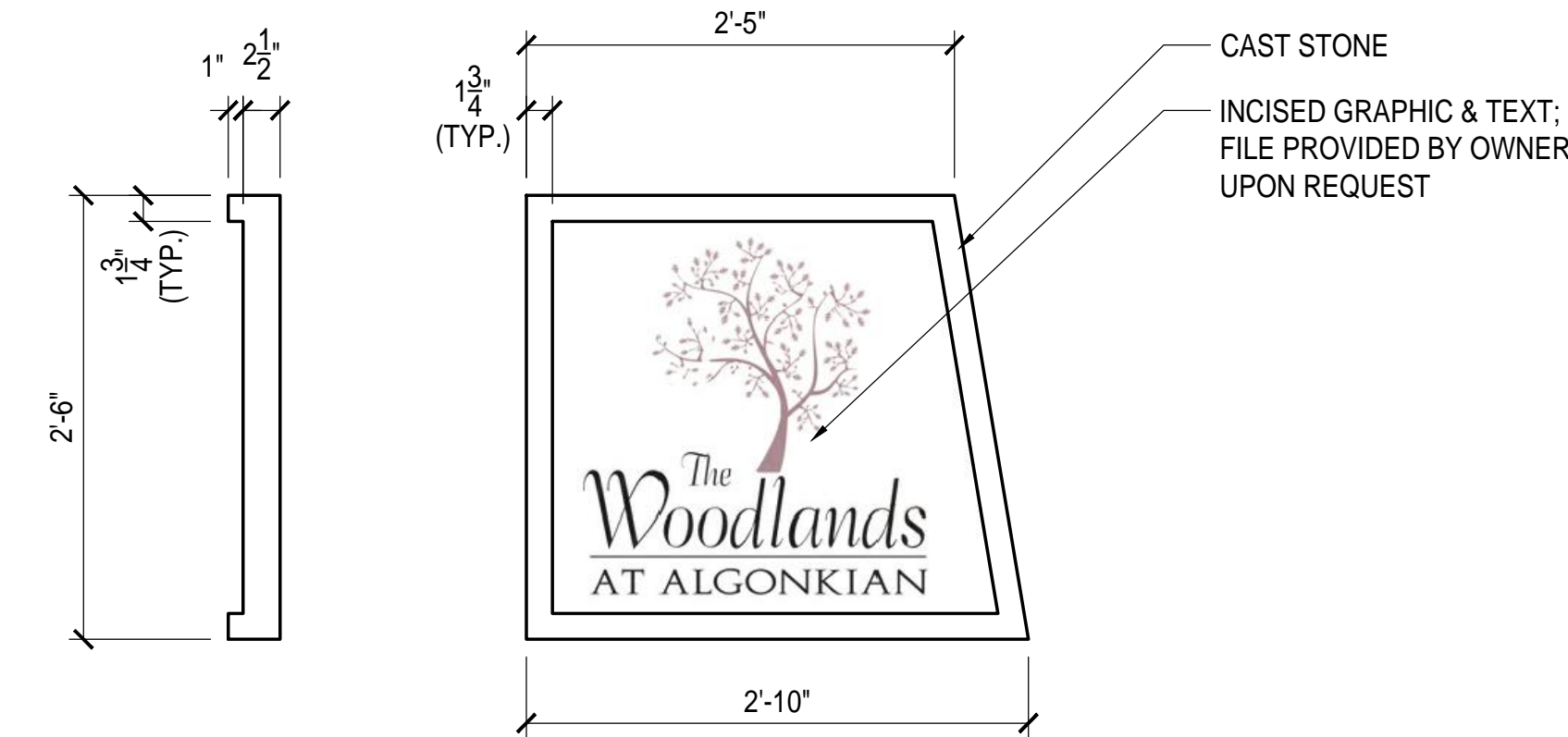
Scale: AS SHOWN

Drawn By: DN

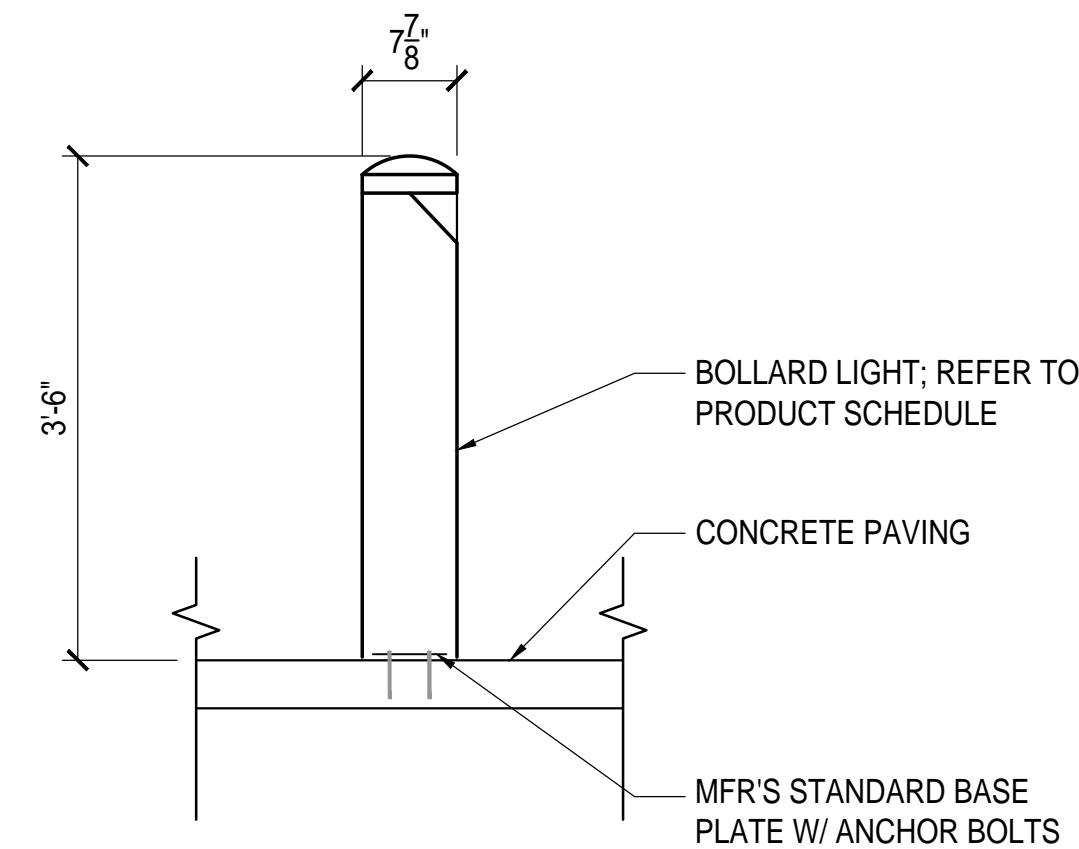
Checked By:

Date: AUGUST 8, 2018

Sheet No. L303

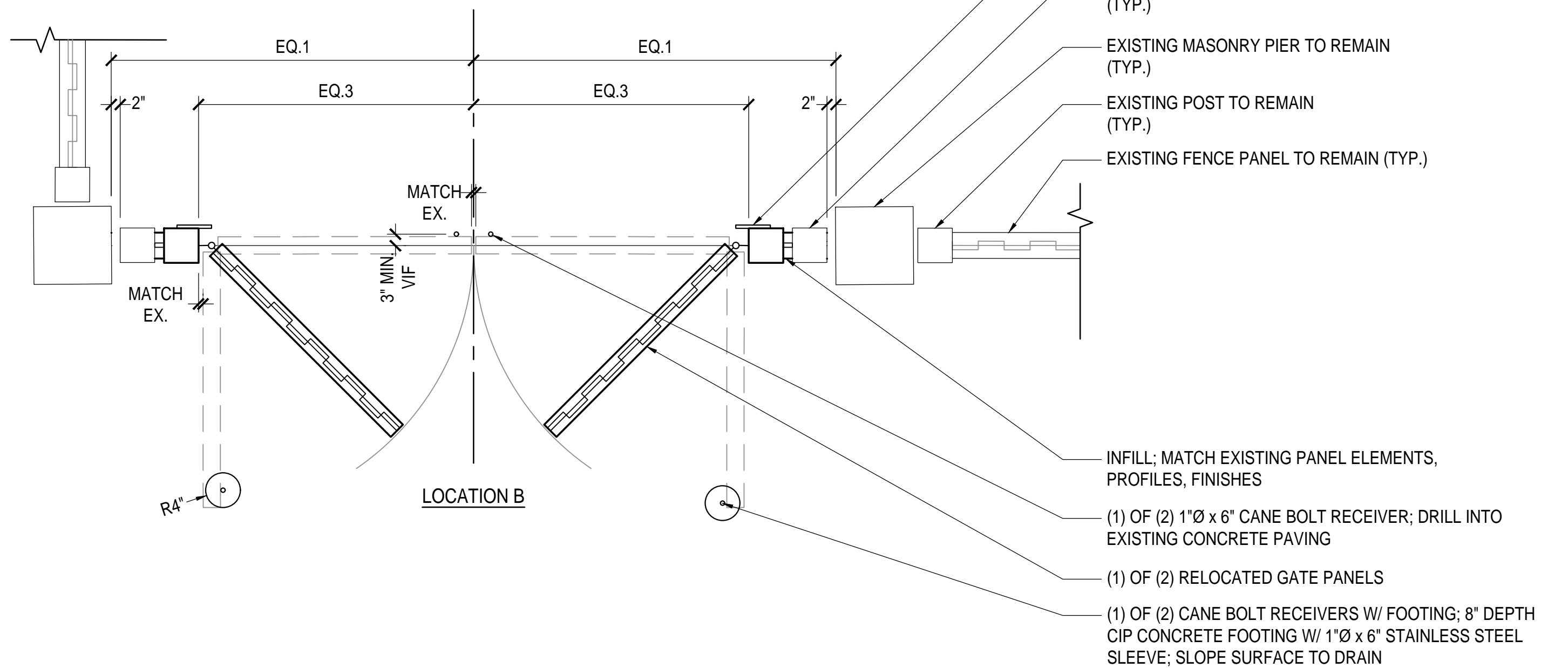
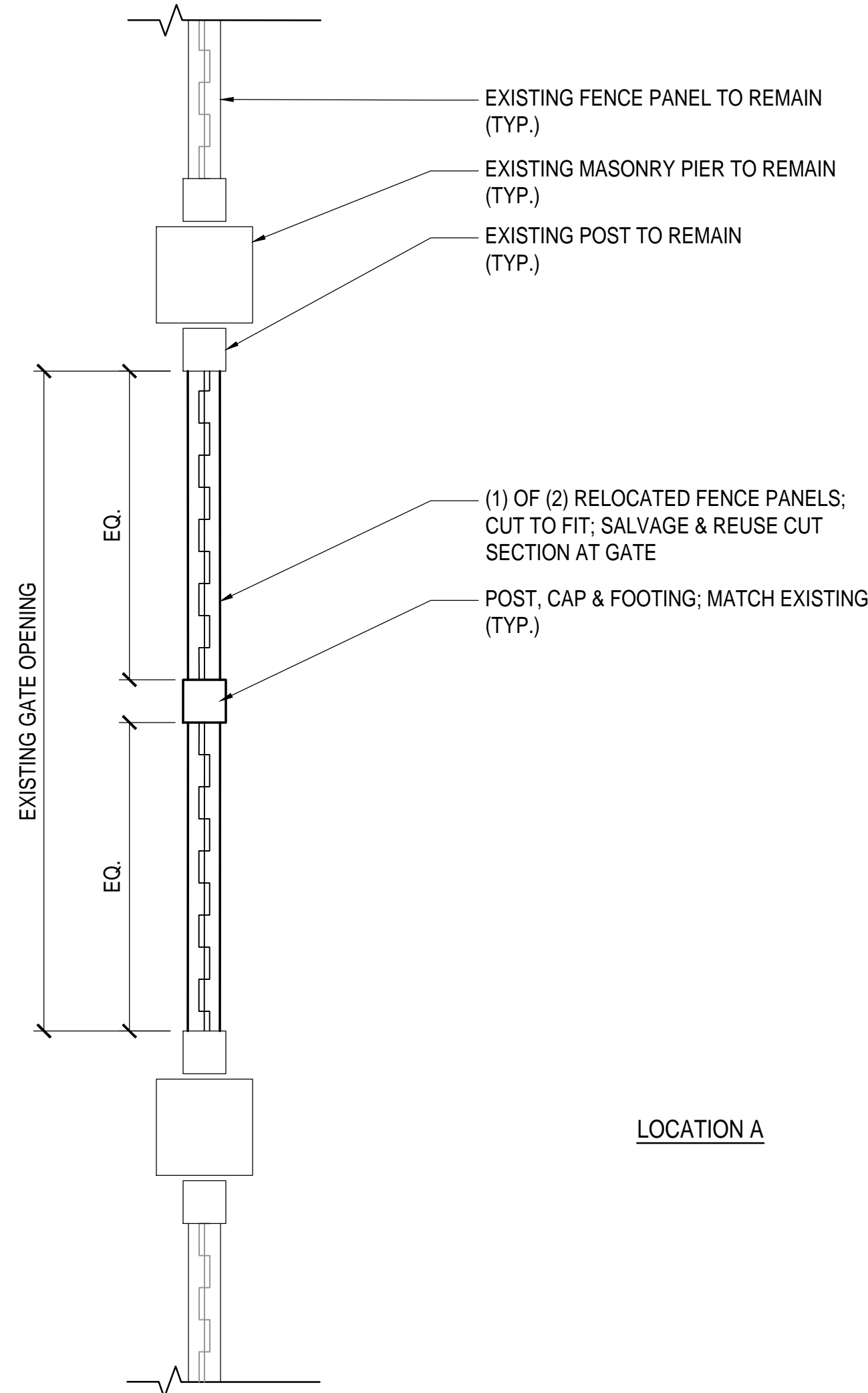


2 ENTRANCE SIGN PANEL
1" = 1'-0"



- NOTES:
- DETAIL IS FOR GENERAL MOUNTING REQUIREMENTS. REFER TO SITE ELECTRICAL PLANS FOR ELECTRICAL REQUIREMENTS.
 - STUB OUT LIGHTS PRIOR TO PLANTING INSTALLATION. STAKE IN FIELD FOLLOWING PLANTING FOR ARCHITECT'S REVIEW AND ADJUSTMENT.
 - ORIENT LIGHT TOWARD SIDEWALK.
 - PROVIDE INTERNAL DRIVERS OR SHOP DRAWINGS INDICATING PROPOSED LOCATIONS FOR ARCHITECT'S REVIEW AND ADJUSTMENT.

3 BOLLARD LIGHT
3/4" = 1'-0"



- NOTES:
- REMOVE AND SALVAGE EXISTING FENCE PANELS FROM LOCATION B. REPAIR, REFINISH, AND INSTALL AT LOCATION A.
 - REMOVE AND SALVAGE EXISTING GATE PANELS FROM LOCATION A. REPAIR, REFINISH, AND INSTALL AT LOCATION B.
 - DEMO AND REMOVE INTERMEDIATE POSTS, GATE KEEPERS, AND FOOTINGS.
 - REPAIR & REFINISH EXISTING ADJACENT POSTS TO REMAIN.
 - NEW MATERIALS, FINISHES, PROFILES SHALL MATCH EXISTING.
 - PROVIDE NEW 3/4" x 36" HEAVY DUTY GALVANIZED STEEL CANE BOLTS W/ SEPARATE RETAINER HARDWARE. MODIFY EXISTING GATE FRAME, AS APPROVED BY ARCHITECT.
 - REUSE EXISTING GATE HINGES.
 - SET CANE BOLT RETAINER SLEEVES TO HOLD EACH GATE PANEL PARALLEL TO FENCE CENTERLINE IN CLOSED POSITIONS & AT 90° IN OPEN POSITION. ADJUST HINGES AND SPACING AS NECESSARY TO PROVIDE INDICATED RANGE OF MOTION WITHOUT DAMAGE.
 - DO NOT WELD GALVANIZED ELEMENTS.
 - NEW CONSTRUCTION CONSTITUTES A DELEGATED DESIGN. PROVIDE SHOP DRAWINGS SEALED BY A VIRGINIA-LICENSED STRUCTURAL ENGINEER.

1 GATE RELOCATION
1/2" = 1'-0"

ALGONKIAN
WOODLAND
ENTRANCE

LOUDOUN COUNTY, VIRGINIA

CONSTRUCTION
DETAILS

FOR BID AUGUST 8, 2018

No. Description Date

Revisions

Project Number: 16064.01

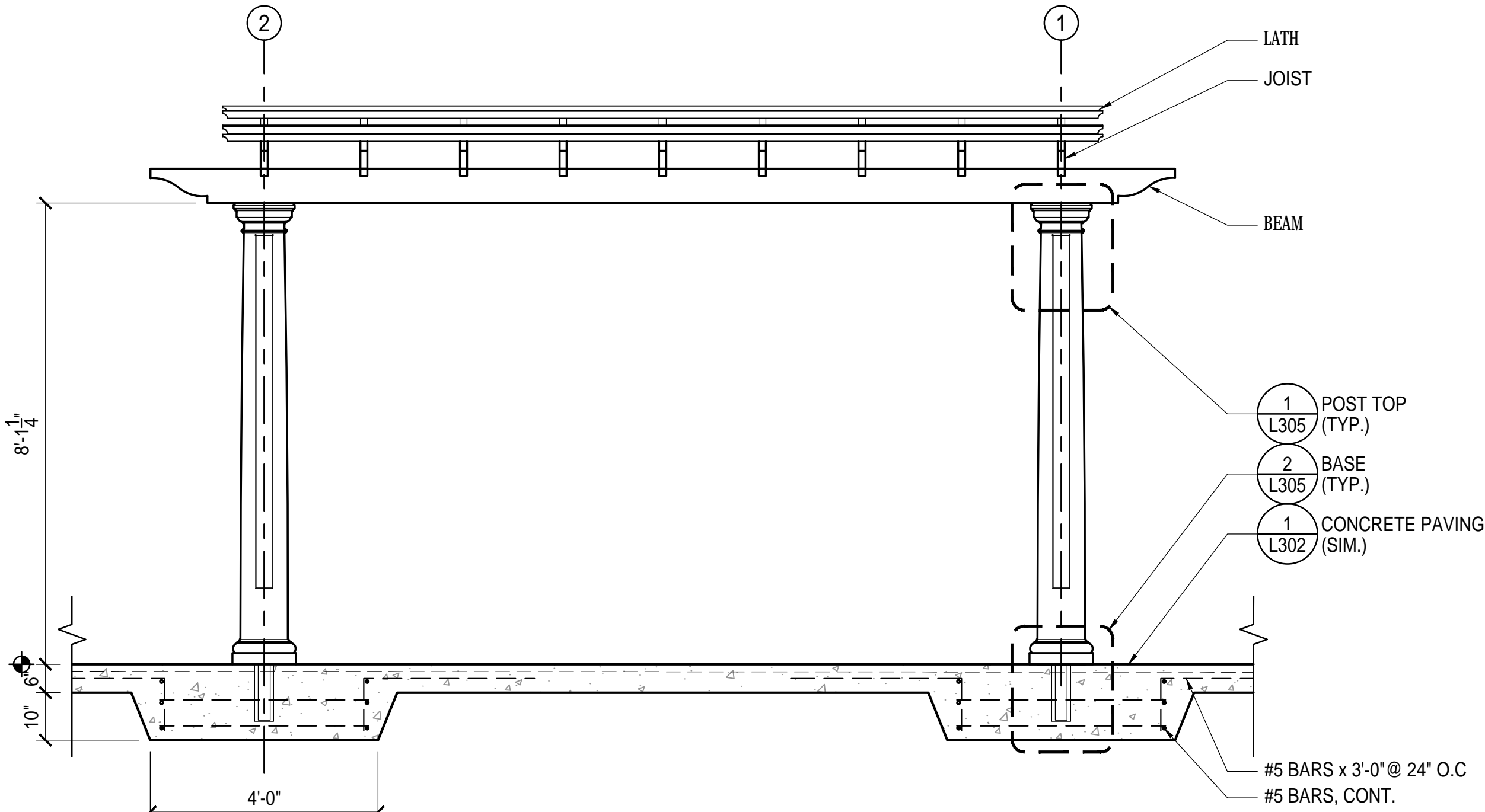
Scale: AS SHOWN

Drawn By: DN

Checked By:

Date: AUGUST 8, 2018

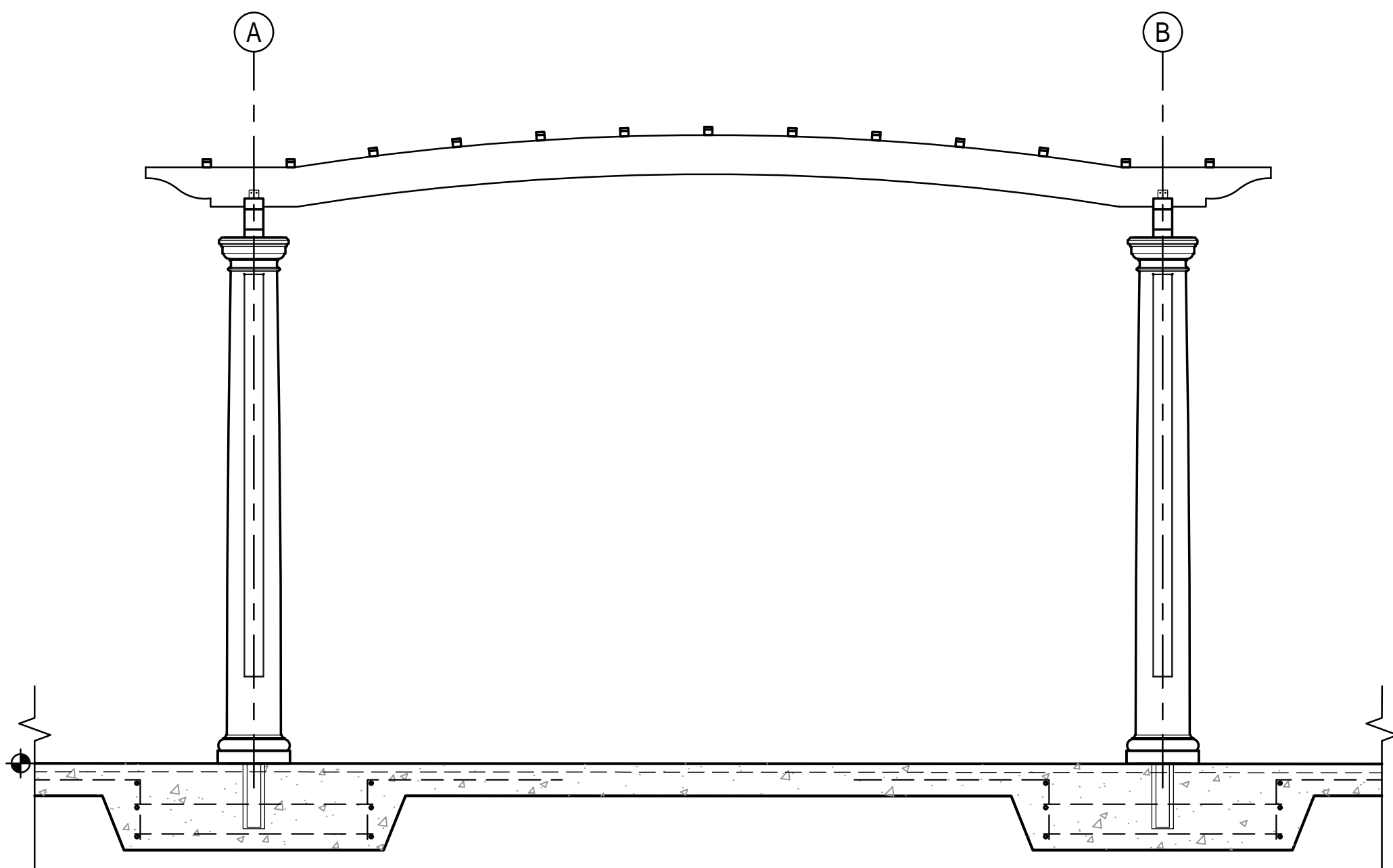
Sheet No. L304



NOTES
1. FOOTINGS, REINFORCEMENT AND RELATED CONDITIONS CONSTITUTE A DELEGATED DESIGN. REQUIREMENTS SHOWN ARE APPROXIMATE. PROVIDE SHOP DRAWINGS SEALED BY A VIRGINIA-LICENSED STRUCTURAL ENGINEER.

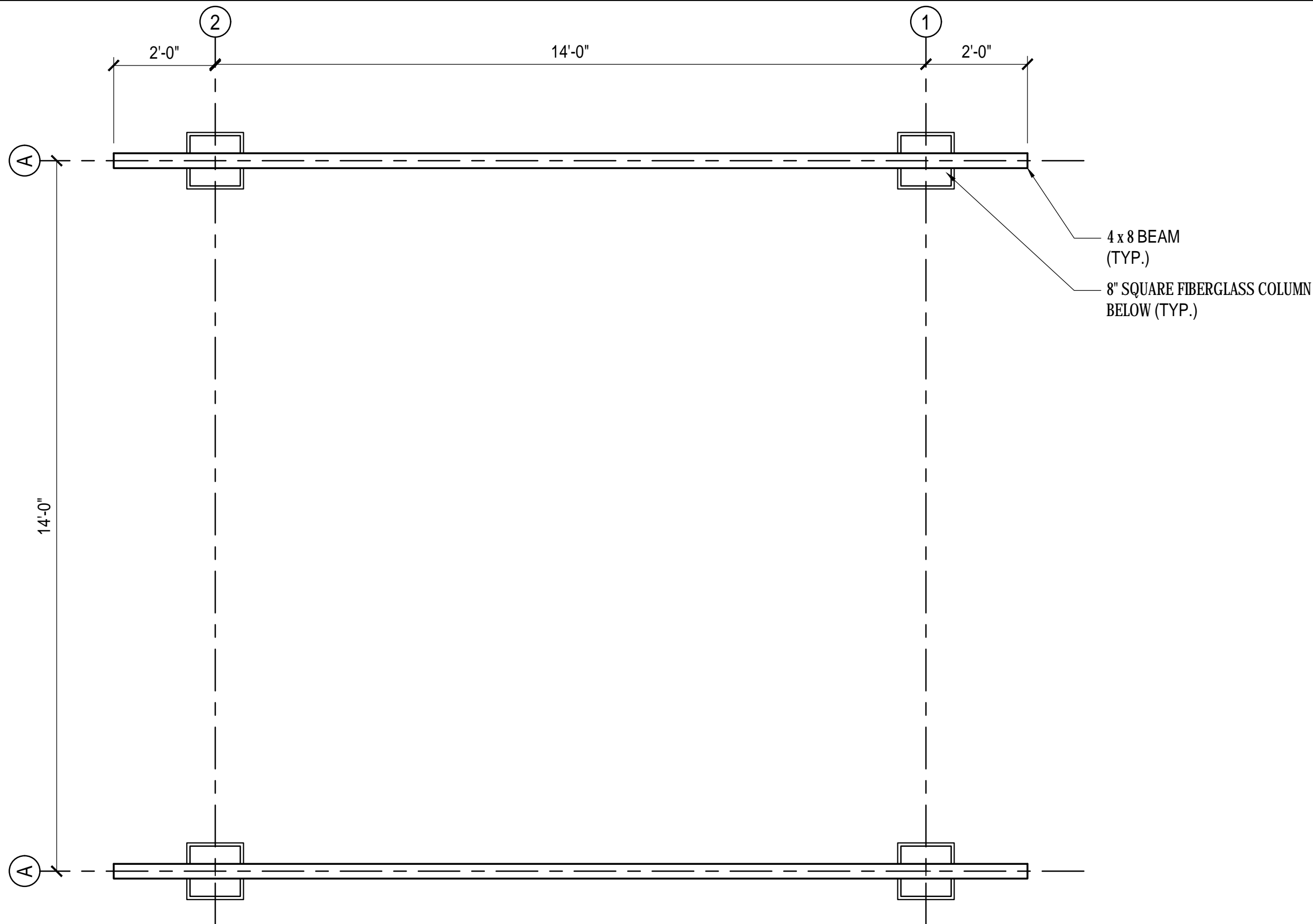
PERGOLA

1/2" = 1'-0"

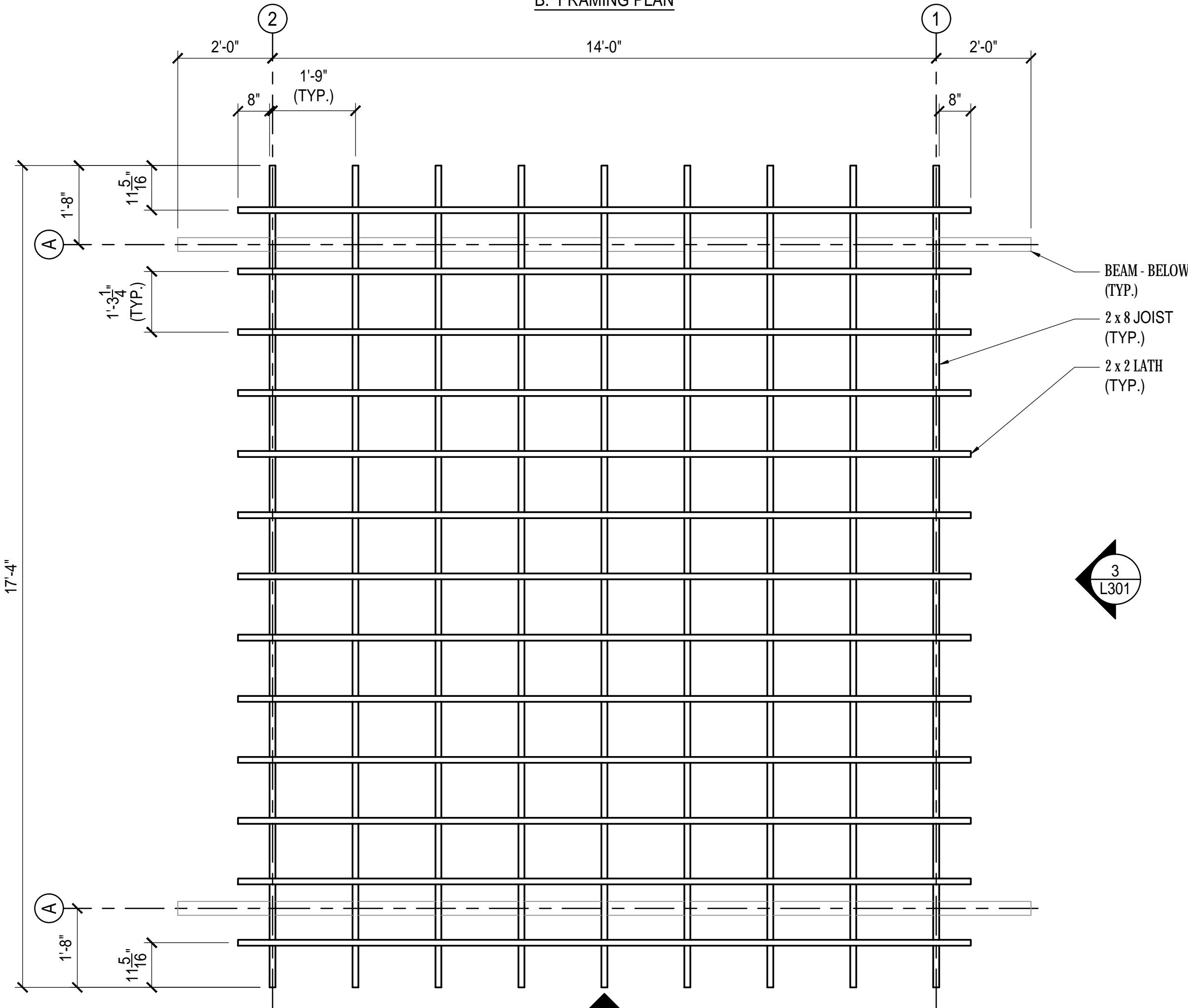


PERGOLA

1/2" = 1'-0"



B. FRAMING PLAN

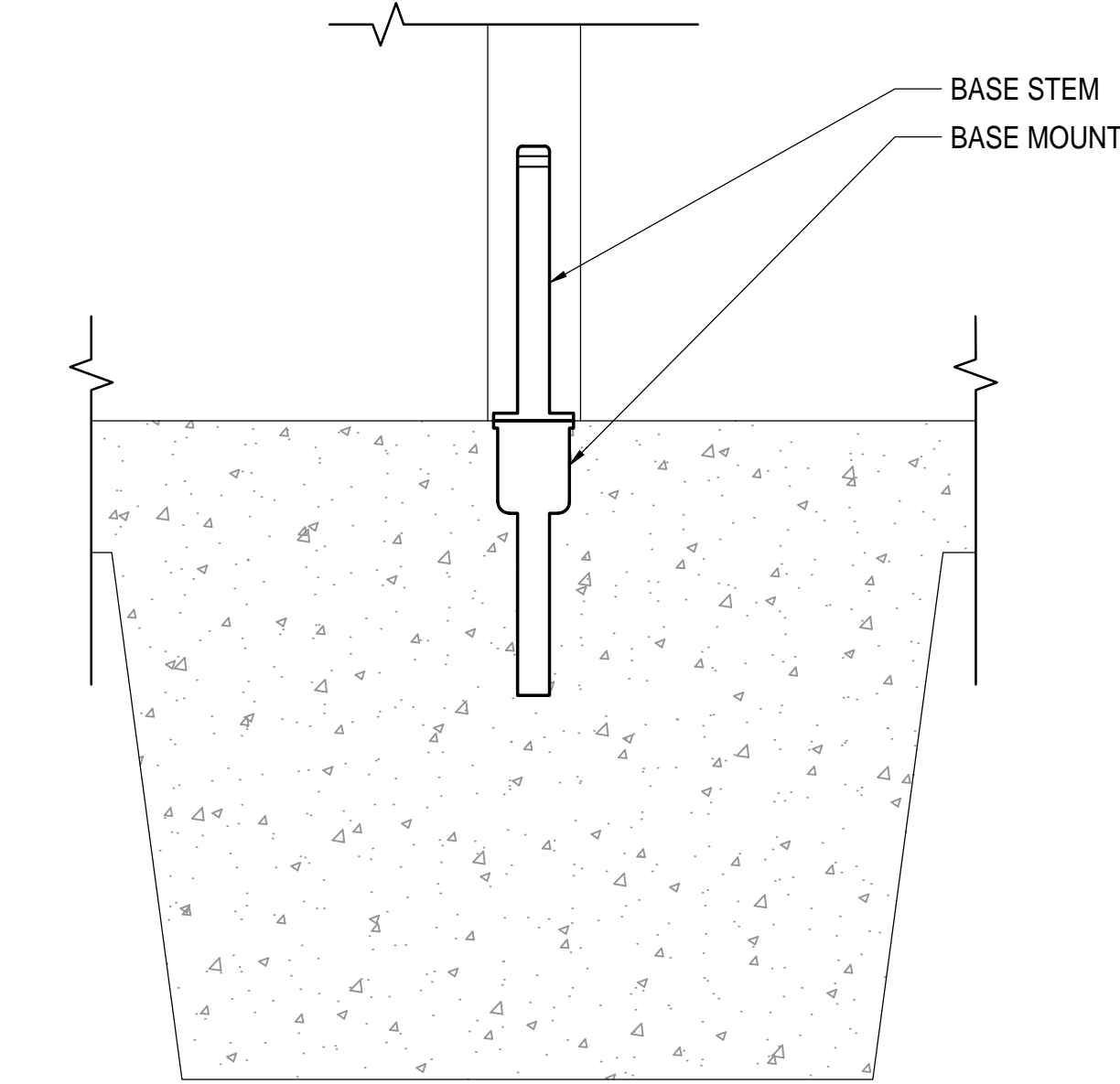


A. FRAMING PLAN

NOTES:
1. PERGOLA DESIGN IS BASED ON A SPECIFIC PRODUCT. REFER TO PRODUCT SCHEDULE.

PERGOLA

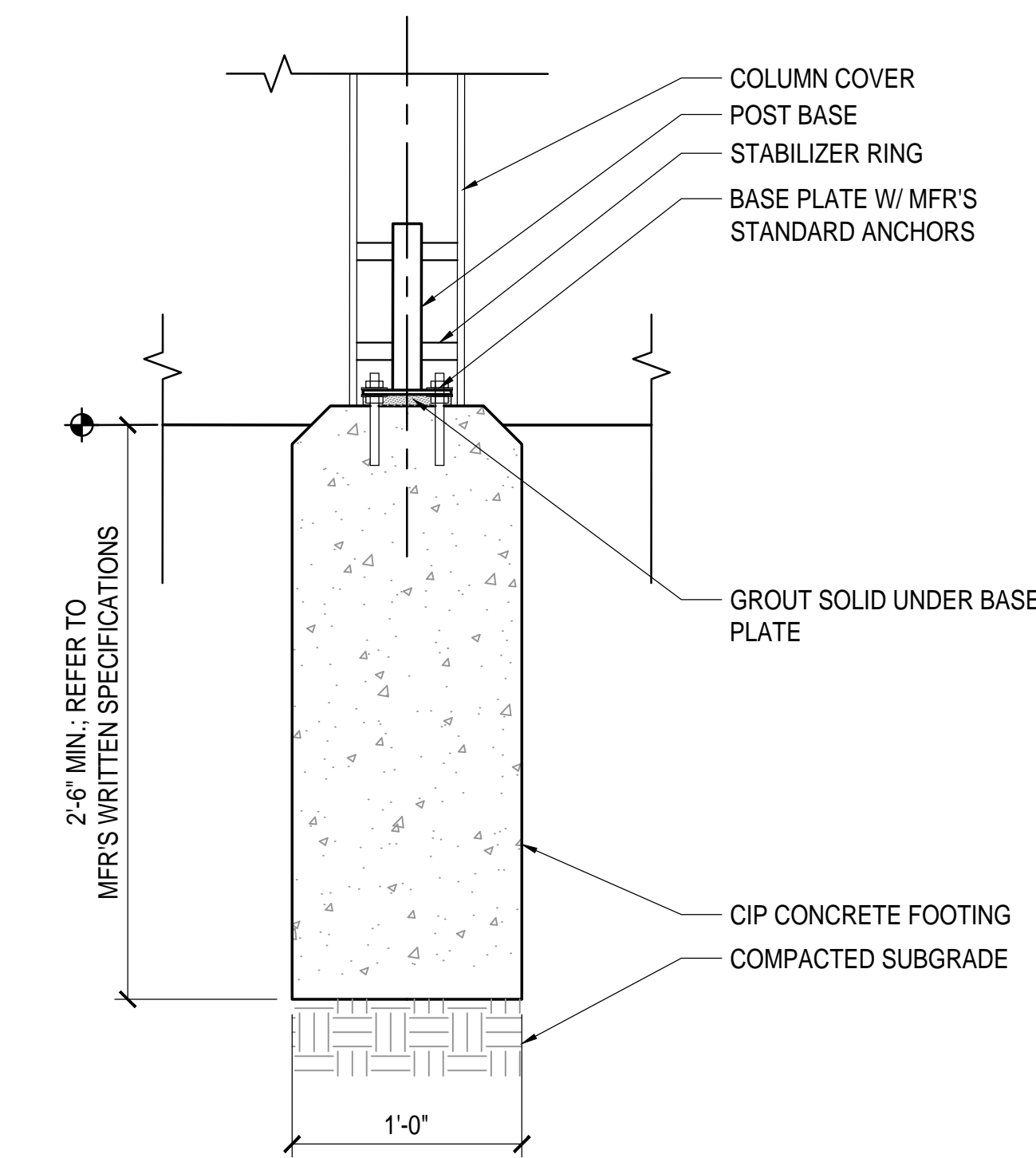
1/2" = 1'-0"



NOTES:
1. INSTALL BASE MOUNT PER MFR'S WRITTEN SPECIFICATIONS.

5 BASE

1-1/2" = 1'-0"



3A FOOTING

1-1/2" = 1'-0"

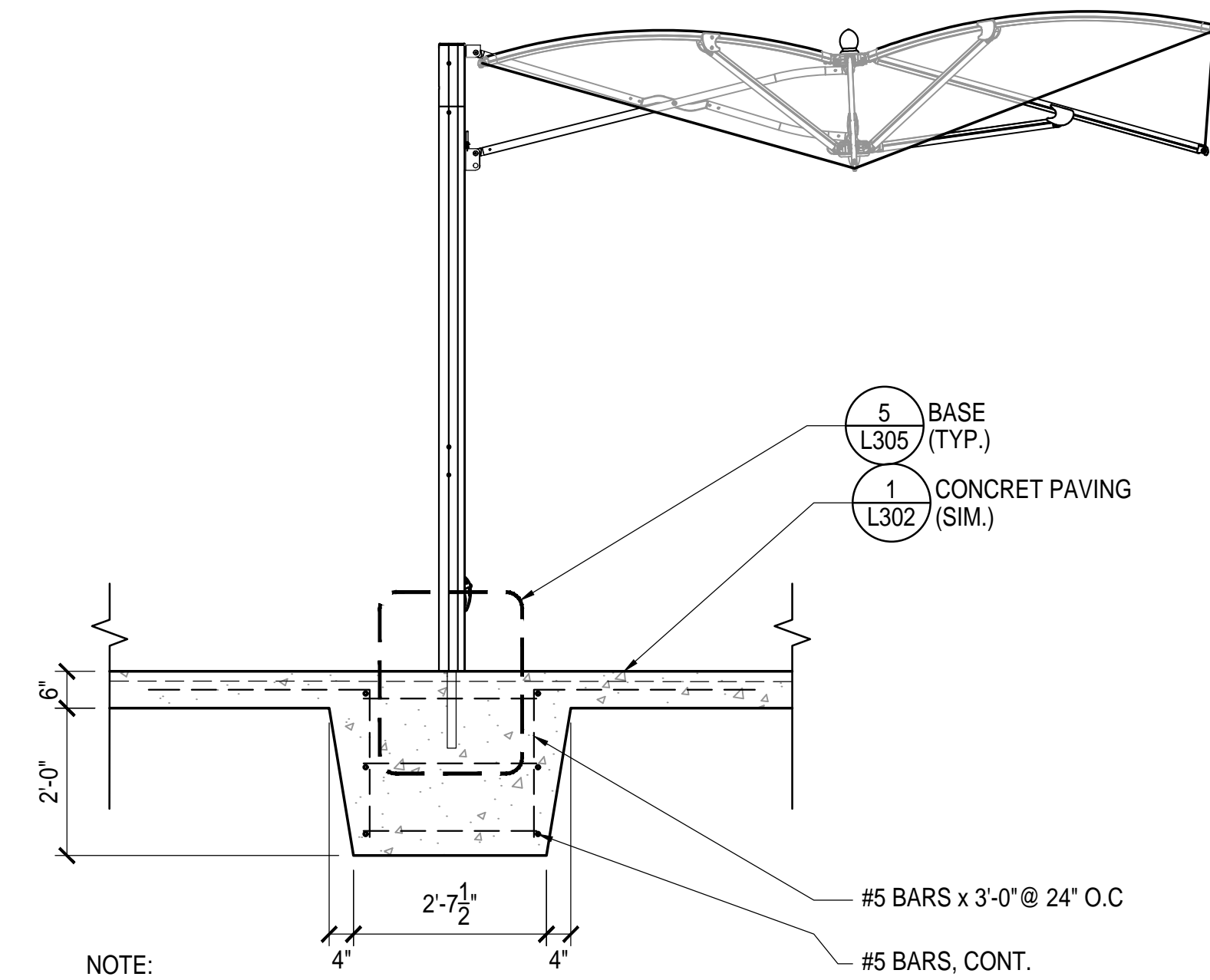


NOTES:
1. STYLE FOR NEW DIRECTIONAL SIGNS DEPICTED ABOVE.
2. TEXT FOR NEW DIRECTIONAL SIGN LISTED BELOW.
3. PROVIDE SHOP DRAWING SHOWING ALL PROPOSED PANEL SIGN ELEVATIONS AND LOCATIONS FOR APPROVAL PRIOR TO FABRICATION.

- ← BOAT RAMP, SHELTERS 3 & 4, AND SOCCER FIELDS
- ↑ THE WOODLANDS GOLF COURSE PARK OFFICE

6 DIRECTIONAL SIGN

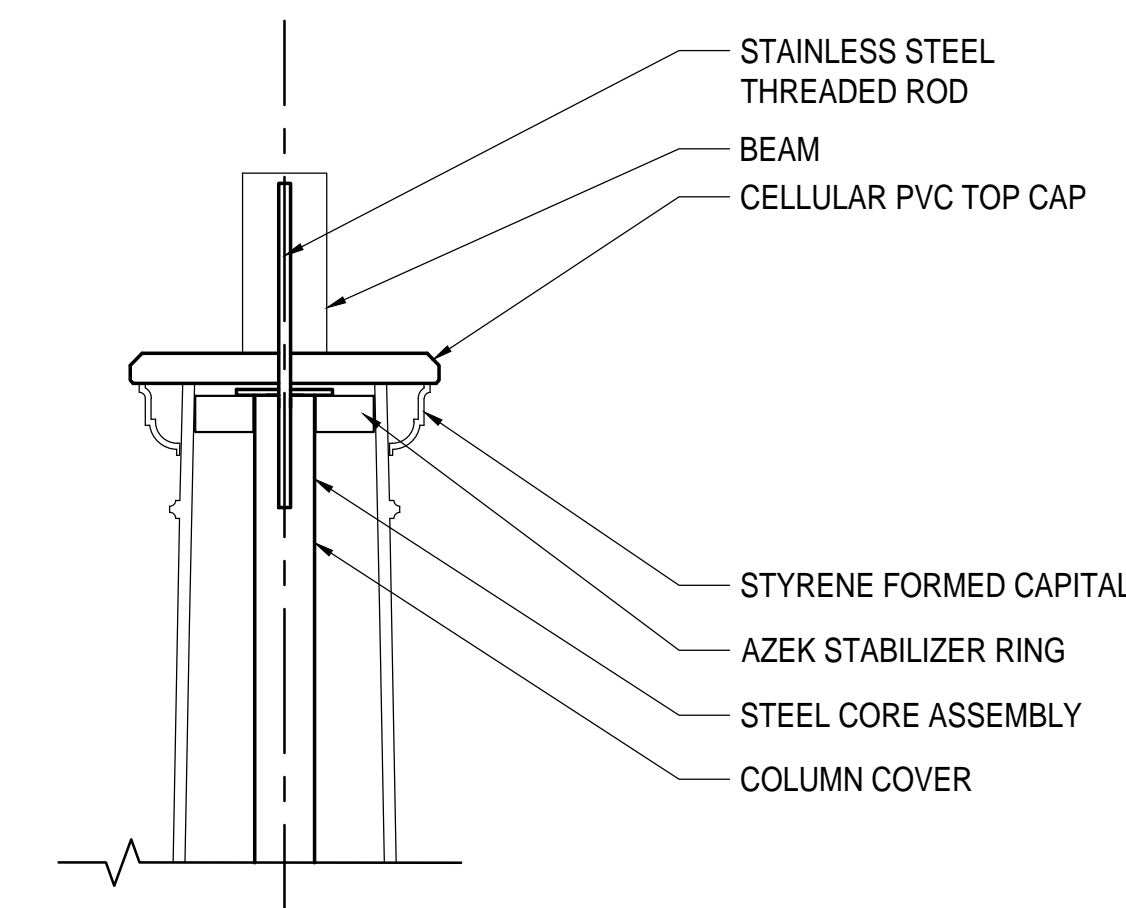
1/2" = 1'-0"



NOTE:
1. REFER TO PRODUCT SCHEDULE.
2. FOOTINGS, REINFORCEMENT AND RELATED CONDITIONS CONSTITUTE A DELEGATED DESIGN. REQUIREMENTS SHOWN ARE APPROXIMATE. PROVIDE SHOP DRAWINGS SEALED BY A VIRGINIA-LICENSED STRUCTURAL ENGINEER.

4 UMBRELLA

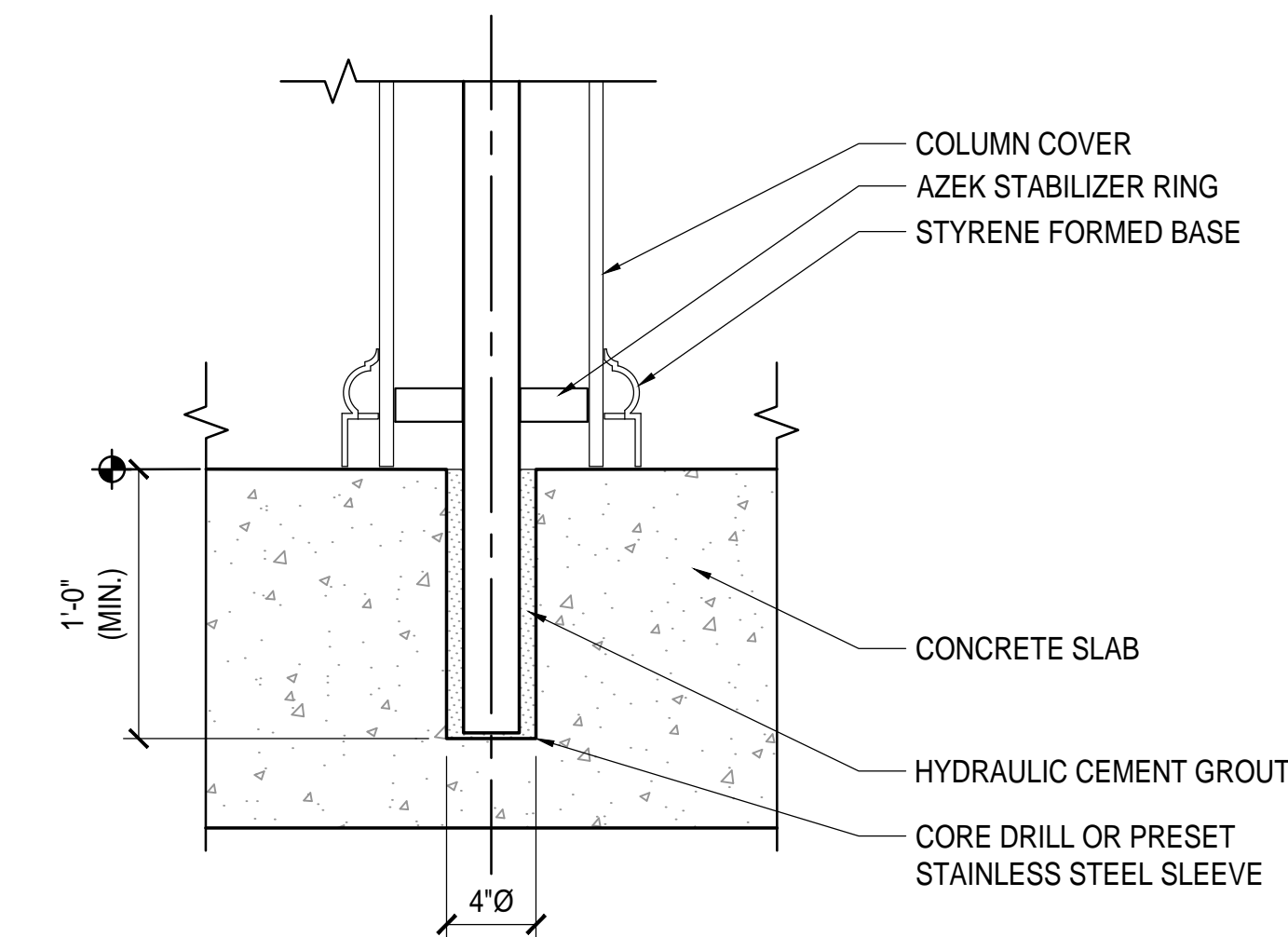
1/2" = 1'-0"



NOTE:
1. INSTALL PER MFR'S WRITTEN SPECIFICATIONS.

1 POST TOP

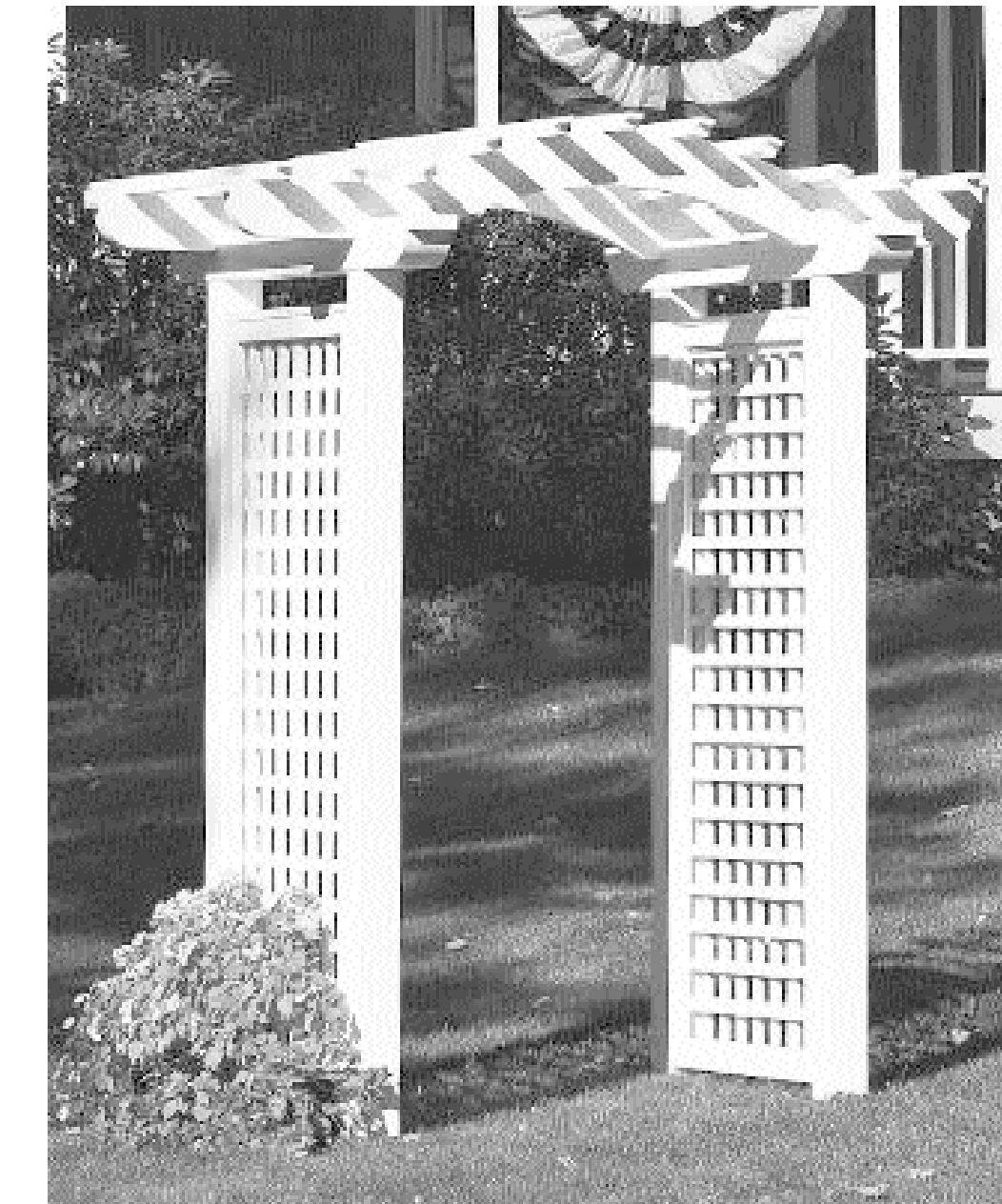
1-1/2" = 1'-0"



NOTE:
1. INSTALL PER MFR'S WRITTEN SPECIFICATIONS.

2 BASE

1-1/2" = 1'-0"



NOTE:
1. REFER TO PRODUCT SCHEDULE.
2. REFER TO 3A/L305 FOR FOOTING.

3 ARBOR 2

1/2" = 1'-0"

LSG LANDSCAPE ARCHITECTURE

1775 GREENSBORO STATION PL
SUITE 110
TYSONS, VIRGINIA 22102
703-821-2045

ALGONKIAN WOODLAND ENTRANCE

LOUDOUN COUNTY, VIRGINIA

CONSTRUCTION DETAILS

FOR BID AUGUST 8, 2018

No.	Description	Date
-----	-------------	------

Revisions

Project Number: 16064.01
Scale: AS SHOWN
Drawn By: DN
Checked By:
Date: AUGUST 8, 2018

Sheet No. L305

