

# POHICK BAY

## \*BATH HOUSE - ADA RENOVATIONS\*

POHICK BAY REGIONAL PARK  
6501 POHICK BAY DRIVE  
LORTON, VA 22079

THE PLANS, IDEAS, ARRANGEMENTS, AND DESIGNS INDICATED OR REPRESENTED BY THIS DRAWING (S) ARE OWNED BY, AND ARE THE PROPERTY OF, FRANK V. STURGEON, ARCHITECT, AND ARE INTENDED ONLY IN CONNECTION WITH THIS SPECIFIC PROJECT. THESE DRAWINGS SHALL NOT BE USED, IN WHOLE OR IN PART FOR ANY OTHER PURPOSE FOR WHICH THEY WERE NOT ORIGINALLY INTENDED WITHOUT WRITTEN PERMISSION FROM FRANK V. STURGEON, AIA ARCHITECT. © 2020 FRANK V. STURGEON, AIA ARCHITECT EXPRESSLY RESERVES HIS COMMON LAW COPYRIGHT AND OTHER PROPERTY RIGHTS IN THESE PLANS, SPECIFICATIONS, AND IDEAS. THESE DOCUMENTS ARE NOT TO BE REPRODUCED, CHANGED, OR COPIED (ELECTRONICALLY OR MANUALLY) IN ANY FORM OR MANNER WHATSOEVER NOR ARE THEY TO BE ASSIGNED TO ANY THIRD PARTY WITH OUT OBTAINING WRITTEN PERMISSION OR CONSENT FROM FRANK V. STURGEON, AIA ARCHITECT. © 2020

REVISIONS

AGS

A DESIGN GROUP, LLC  
ART-ARCHITECTURE-ENGINEERING  
2787 HILL ROAD  
VIENNA, VA 22181  
FRANK V. STURGEON, AIA  
703.936.5226  
FRANK@ADG10.COM

POHICK BAY BATH HOUSE  
ADA RENOVATIONS  
POHICK BAY REGIONAL PARK  
6501 POHICK BAY DRIVE  
LORTON, VA 22079  
NORTHERN, VA

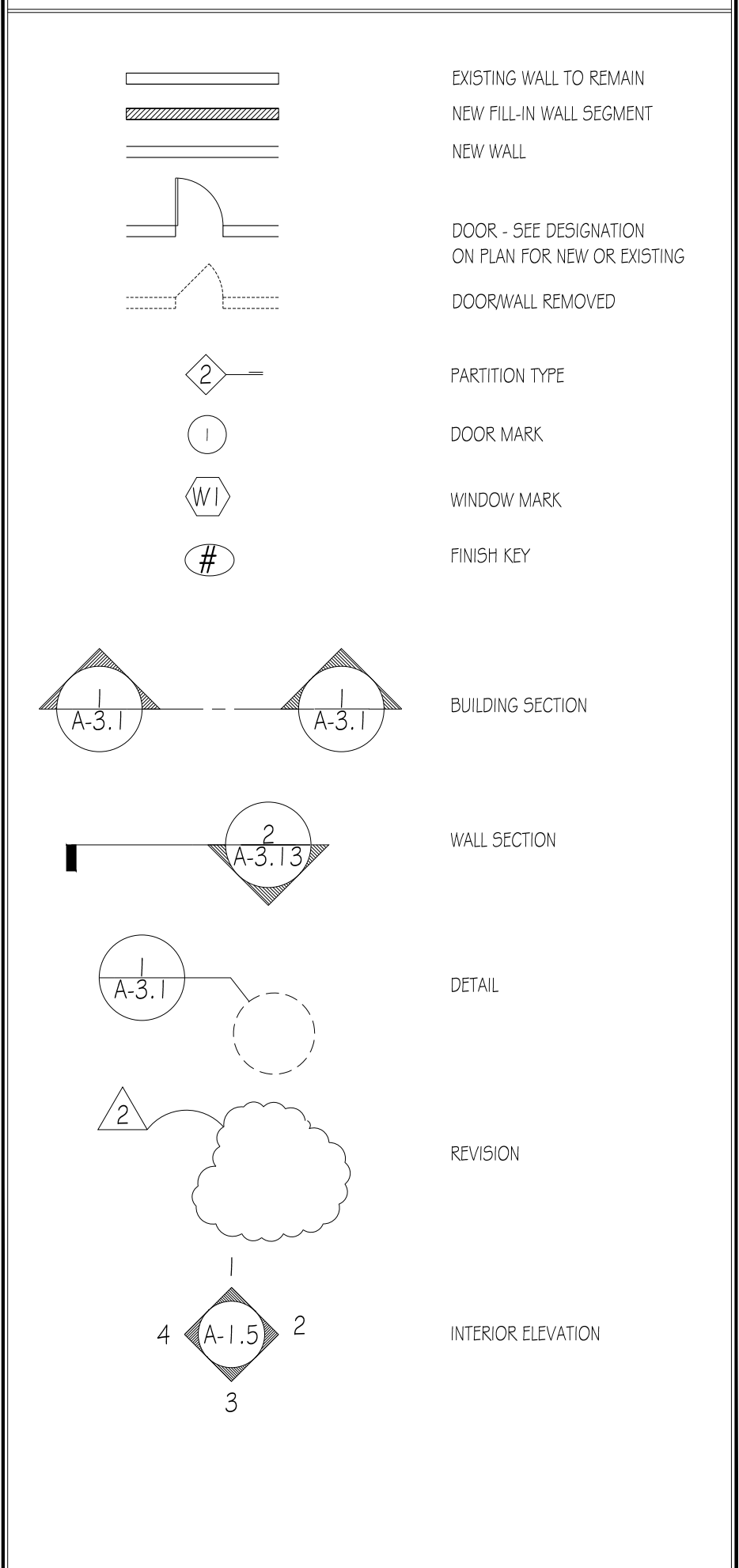
### GENERAL CONSTRUCTION NOTES

- The Virginia Statewide Uniform Building Code (IBC 2015) shall apply to this Project and the Virginia Existing Building Code - 2015 Edition.
- The General Contractor is responsible for safety measures on the job site.
- Electrical, and Plumbing subcontractors shall provide additional design data, drawings, and information to code authorities, beyond those herein, required to properly execute work and secure Trade permits.
- When conflicts exist between floor plans and details, the larger scale drawings (detail) shall take precedent. The Contractor shall contact the Architect regarding any discrepancies.
- All wood blocking in contact with masonry, concrete, or moisture shall be pressure-treated for resistance to rot and decay.
- Written dimensions on the drawings shall dictate over hand scaled dimensions. Do not scale drawings.
- When referenced standards or design numbers (for example, Underwriter Laboratory Fire Resistance Nos., ASTM standards, ANSI standards, etc.) are indicated on the drawings, the Contractor shall obtain the standard or detail and provide the assembly in compliance with the standard specified.
- Certain information contained in these drawings is based on specific products. The information contained herein may require adjustments or modifications to conform to such items. In cases where changes are necessary, these drawings shall be used to show the design intent only.
- The Contractor shall verify all dimensions concerning existing and new work, information contained on the drawings, and notify the architect of any conflicts before proceeding with either fabrication or installation of the work. In addition, the contractor shall notify the Architect immediately should existing conditions prohibit execution of the design intent of the drawings. Any additional work, demolition, and/or removal as a result of failure to notify the Architect will be at the contractor's expense.
- The Contractor shall furnish all items shown on the drawings unless specifically noted otherwise either on the drawings or in the specifications.
- All studs, ceiling framing, and framing members shall be placed so as to avoid interference with locations of casework, recessed lighting fixtures, piping, duct work and similar items. General Contractor shall provide blocking for wall mounted items and grab bars as required.
- The Contractor shall broom clean all interior floor surfaces prior to the end of each day. All trash, construction debris, tools, etc., shall be removed from the park by the Contractor on a weekly basis.
- The contractor shall be responsible for restricting and containing dust and debris generated from construction work partitions or barriers as required.
- The scope of work described in these documents requires that the contractor erect and maintain safety measures (barriers, fencing, signage, and signaling devices). The contractor is required to use caution and extreme safety precautions in safeguarding both people and property. Standards established by the Occupational Safety and Health Agency (OSHA) shall apply. The Contractor is responsible for meeting and maintaining all OSHA standards and safety programs.
- "Notes" on typical section or detail sheets shall pertain to all similar conditions.
- When components or equipment are indicated on the drawings, the Contractor shall supply all elements for the proper operation of the same, including but not limited to: supports, utility connections, etc.
- The Contractor and all Subcontractors shall guarantee their work for a period of one year from the date of Substantial Completion.
- The term "PROVIDE" indicates furnish and install.

### ABBREVIATION LIST

@	AT	F.D.	FLOOR DRAIN	Q.T.	QUARRY TILE
A.B.	ANCHOR BOLT	F.E.C.	FIRE EXTINGUISHER	R	RISER
AC	AIR CONDITIONING	FIN.	FINISHED	R.A.	RETURN AIR
A.C.T.	ACOUSTICAL TILE	FL.	FLOOR OR FLUSH	R.A.D.	RADIUS
A.D.	AREA DRAIN	FLR.	FLOORING	R.D.	ROOF DRAIN
A.DJ.	ADJACENT	FUR.	FURNISHING	REIN.	REINFORCING
A.F.F.	ABOVE FINISHED FLOOR	FURN.	FURNISHED	REQD.	REQUIRED
AGGR.	AGGREGATE	FLOOR.	FLOOR	RES.	RESILIENT
ALT.	ALTERNATE	F.R.T.	FIRE RETARDANT	RM.	ROOM
ALUM.	ALUMINUM	GA.	GALVE	R.O.	ROUGH OPENING
ANOD.	ANODIZED	GALV.	GALVANIZED	R.O.	REMOVE EXISTING
A.P.	ACCESS PANEL	G.B.	GRAB BAR	S.	SHELF(S)
APPROX.	APPROXIMATE	GR.	GRAD	S.A.T.	SUSPENDED ACOUSTICAL TILE
ARCH.	ARCHITECT (URAL)	GL.	GLASS	S.C.	SOLID CORE
ASPH.	ASPHALT	G.B.	GYP SUM BOARD	SCH.	SCHEDULE
AVC.	AVERAGE	H.B.	HOSE BIB	S.B.	SPLASH BLOCK
BD.	BOARD	H.C.	HOLLOW CORE	SECT.	SECTION
BTWN.	BETWEEN	HOP.	HANDICAPPED	SHT.	SHEET
BT.	BITUMINOUS	HDW.	HARDWARE	SIM.	SIMILAR
BLDG.	BUILDING	H.F.	HOLD FACE	SPEC(S)	SPECIFICATIONS
B.LKG.	BLOCKING	H.M.	HOLLOW METAL	SQ.	SQUARE
B.M.	BEAM	HOR.	HORIZONTAL	S.S.	STAINLESS STEEL
BT.	BOTTOM	H.P.	HIGH POINT	S.F.	SQUARE FOOT
BR.	BEDROOM	H.T.	HEIGHT	STD.	STANDARD
BRG.	BEARING	I.D.	INSIDE DIAMETER	STL.	STEEL
BSMT.	BASEMENT	INS.	INSULATING	STO.	STORAGE
B.U.R.	BUILT-UP ROOFING	INT.	INTERIOR	STR.	STRUCTURAL
CAB.	CABINET	JAN.	JANITOR	SUR.	SURFACE
CEM.	CEMENT	JST.	JOIST	SUSP.	SUSPENDED
C.I.	CAST IRON	JT.	JOINT	S#R	SHELF # ROD
C.I.J.	CONTROL JOINT	KIT.	KITCHEN	T+B	TREAD
CLR.	CLEAR	K.O.	KNOCK OUT	T+G	TOP # BOTTOM TONGUE & GROOVE
CLG.	CEILING	L.	LENGTH	TH.	THRESHOLD
C.M.U.	CONCRETE MASONRY UNIT	L.AM.	LAMINATE	THK.	THICK
CONC.	CONCRETE	LAV.	LAVATORY	T.O.	TOP OF
COND.	CONDENSER	L.P.	LOW POINT	TYP.	TYPICAL
CONT.	CONTINUOUS	LT.	LIGHT	UC.	UNDERCUT
CONST.	CONSTRUCTION	MAS.	MASONRY	UR.	UNDERWRITERS LABORATORY URINAL
CORR.	CORRIDOR	MATL.	MATERIAL	UNO.	UNLESS NOTED OTHERWISE UNDERSIDE OF STRUCTURE
C.T.	CERAMIC TILE	MAX.	MAXIMUM	US	VAPOR BARRIER
CTR.	CENTER	M.C.	MEDICINE CABINET	V.B.	VINTY TILE
CTR.	CENTERLINE	MEMB.	MEMBRANE	VERT.	VERTICAL
DBL.	DOUBLE	MFR.	MANUFACTURER	VEST.	VESTIBULE
DEMO	DEMOLITION	MIL.	MILIMUM	V.T.R.	VENT THROUGH ROOF
DTL	DETAIL	MISC.	MISCELLANEOUS	V.W.C.	VINYL WALL COVERING
D.F.	DRINKING FOUNTAIN	M.O.	MASONRY OPENING	W	WITH
DIAM OR	DIAMETER	MTD.	MOUNTED	W.C.	WATER CLOSET
DN.	DOWN	MTL.	METAL	W.	WOOD
DO.	DOITTO	N.A.	NOT APPLICABLE	WOW.	WINDOW
D.P.	DAMP-PROOFING	N.I.C.	NOT IN CONTRACT	W.H.	WALL HUNG
DR.	DOOR	NO.	NUMBER	WID	WATER HEATER
D.S.	DRAIN SPOUT	N.T.S.	NOT TO SCALE	W.I.	WROUGHT IRON
D.T.	DRAIN TILE	OA.	OVERALL	W.O.	WITHOUT
DWG.	DRAWING	O.C.	ON CENTER	W.P.	WATER-PROOFING
E.A.	EACH	O.D.	OUTSIDE DIAMETER	W.W.F.	WELDED WIRE FABRIC
ELC.	ELECTRICAL	OFF.	OFFICE	WT.	WEIGHT
ENCL.	ENCLOSURE	O.H.	OVERHEAD		
EQ.	EQUAL	OHG.	OVERHANG		
EQUIP.	EQUIPMENT	OPG.	OPENING		
EXIST.	EXISTING	OPF.	OPPOSITE		
EXT.	EXTERIOR	PLAS.	PLASTIC		
EXP.	EXPOSED/EXPOSITION	P.M.J.F.	PRE-MIXED JOINT FILLER		
E.W.	EACH WAY	PNL.	PANEL		
E.W.C.	ELECTRIC WATER COOLER	POLY.	POLYETHYLENE		
		PREFAB.	PREFABRICATED		
		PTD.	PAINTED		
		PTN.	PARTITION		
		P.T.	PRESSURE TREATED		
		PWD.	PLYWOOD PLATE		

### SYMBOL LEGEND



### SHEET INDEX

A-0 - COVER SHEET	ELECTRICAL DRAWINGS
A-0-1 ACCESSIBILITY (ADA) SHEET	E-1 ELECTRICAL COVER SHEET
A-1 DEMOLITION PLAN	E-2 ELECTRICAL DEMO
A-2 NEW PLAN	E-3 NEW WORK, LIGHTING & POWER
A-3 INTERIOR ELEVATIONS	
A-4 INTERIOR ELEVATIONS	
A-5 FINISH SCHEDULES - DOOR, TOILET ACCESSORIES, ROOM FINISH	
A-6 FRONT ELEVATION	
<u>MECHANICAL DRAWINGS</u>	
M-1 MECHANICAL COVER SHEET	
M-2 MECHANICAL DEMO WORK	
M-3 MECHANICAL NEW WORK & SCHEDULES	
M-4 MECHANICAL DETAILS	
<u>PLUMBING DRAWINGS</u>	
P-1 PLUMBING COVER SHEET	
P-2 PLUMBING DEMO WORK	
P-3 PLUMBING NEW WORK	

### PROJECT INFORMATION

DESCRIPTION OF WORK:	ADA RENOVATION OF 3-BATHROOMS, LAUNDRY ROOM, NEW ADA ENTRANCE, PLUMBING UPGRADES, AND PAVING.
CODE:	IBC 2015, VIRGINIA UNIFORM STATEWIDE BUILDING CODE, 2003 ANSI, MC 2015, IPC 2015, AND IPC 2015, AND 2015 EXISTING VIRGINIA BUILDING CODE. LEVEL OF ALTERATIONS - LEVEL - 3, LEVEL OF HAZARDS - 5 (LOW HAZARD), NO CHANGE OF OCCUPANCY.
USE GROUP:	GROUP - U
BUILDING SIZE:	BUILDING - 600SF MECH RM - 391SF TOTAL = 1191SF
OCCUPANT TABULATION:	ADA - BATH / SHOWER - 129 / 300 = 3 MENS ROOM - (12x17) = 204 / 300 = 5 WOMENS - (11x16) = 176 / 300 = 4 LAUNDRY - 54.5 / 500 = 1 MECHANICAL ROOM - 1 TOTAL = 14 PEOPLE
SPRINKLER SYSTEM:	NONE
CONSTRUCTION TYPE:	EXISTING BUILDING BUILT PRIOR TO AUGUST 2, 1971 - (BOCA 1970) MECHANICAL ROOM BUILT JUNE 1985 - (BOCA 1984) CONSTRUCTION TYPE - IIB
BUILDING HEIGHT:	RIDGE - 16' - 0"
NOTE:	BUILDING IS ON A SEPTIC SYSTEM

- ### DEDUCTIVE ALTERNATE:
- CONCRETE WALK TO MECHANICAL ROOM  
SEE SHEET A-2
  - NEW PAVEMENT SECTION 18x30'
  - FRONT ELEVATION DESIGN W/ CULTURED STONE & DORMER

PROJECT PHASE:

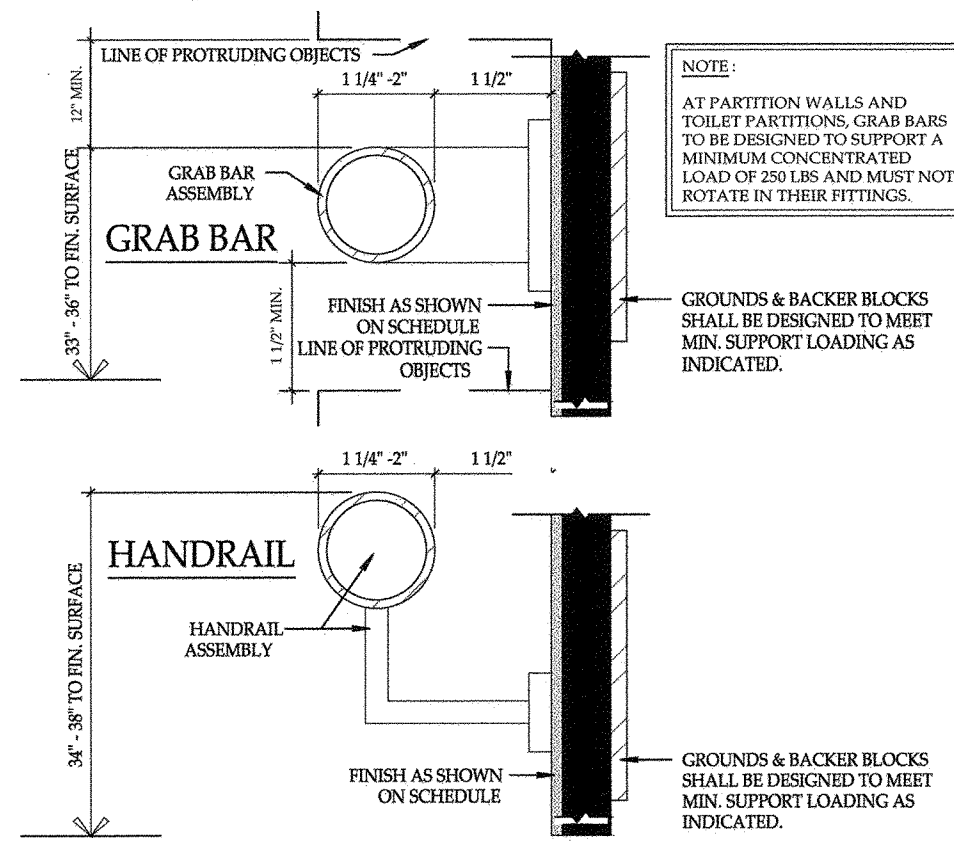
PERMIT SET

DATE:

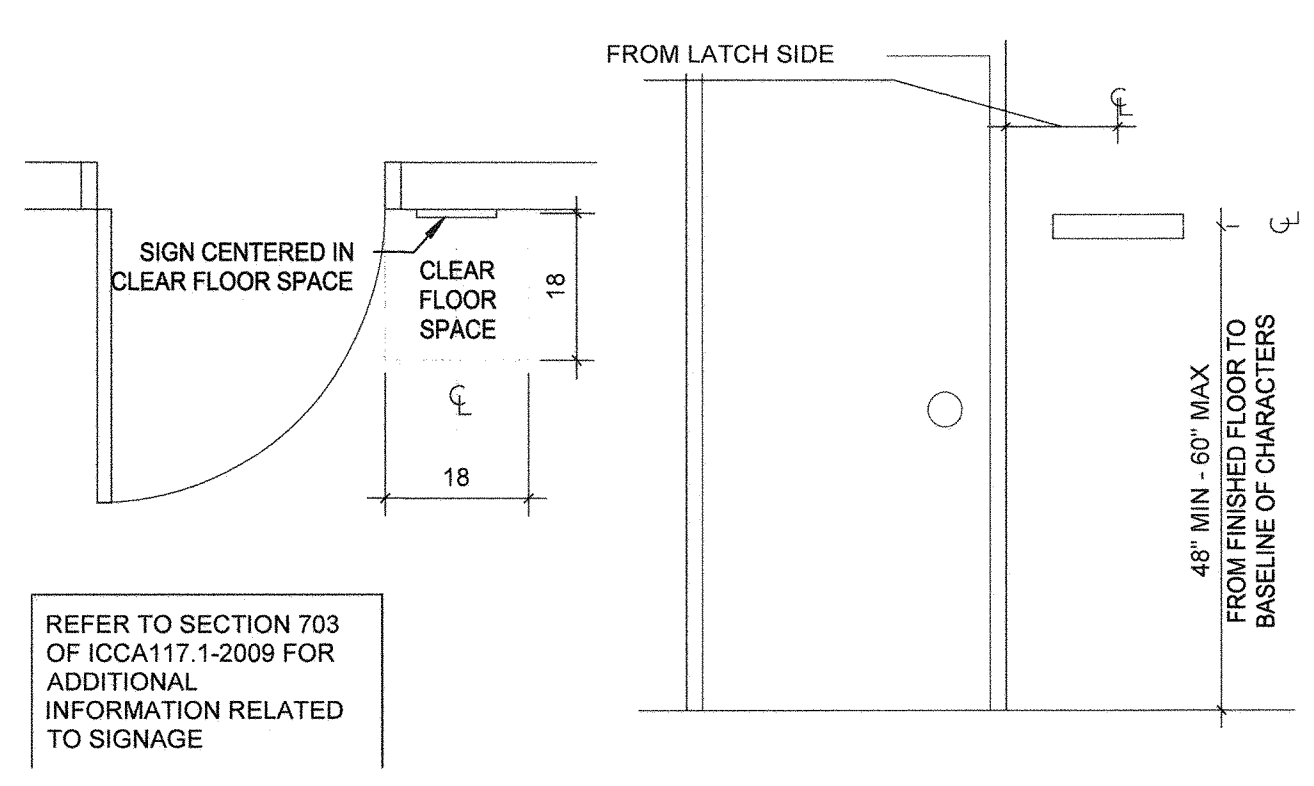
1 - 10 - 2021

SHEET No.

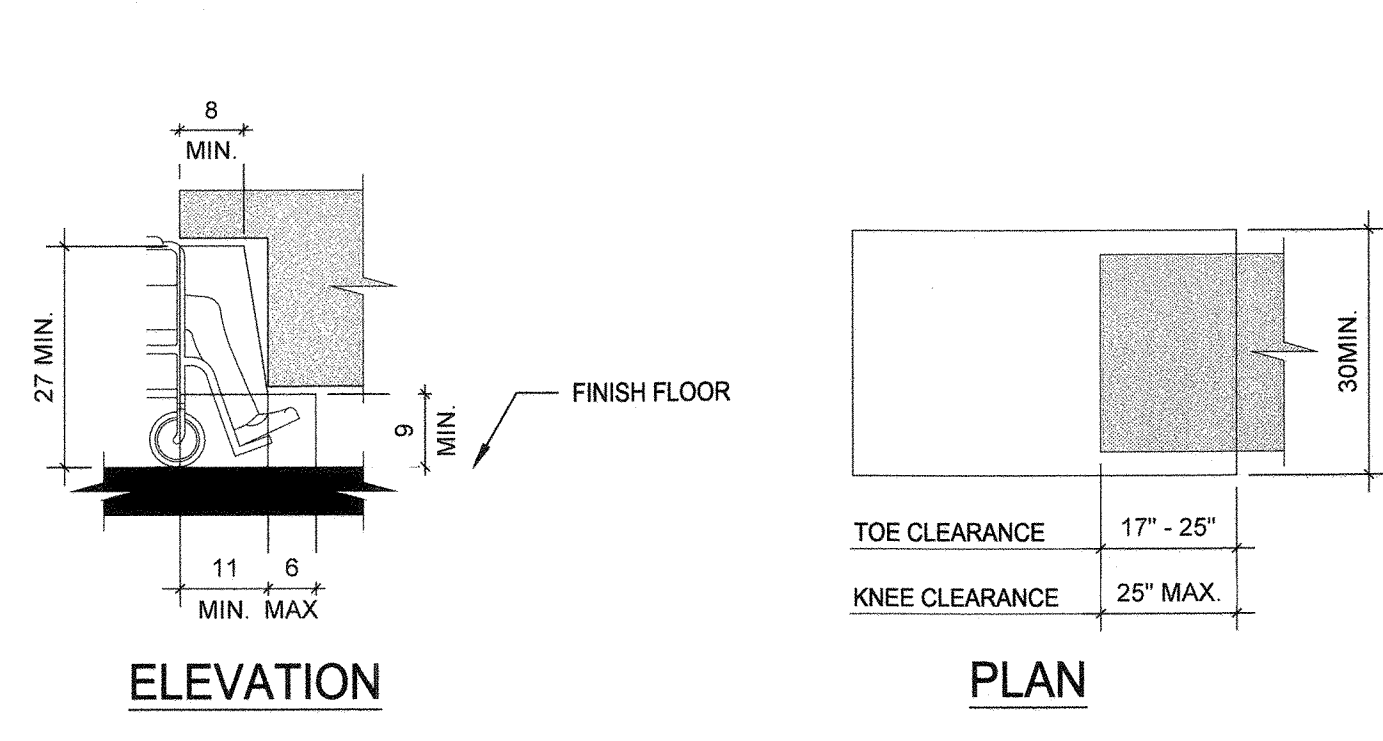
A-0



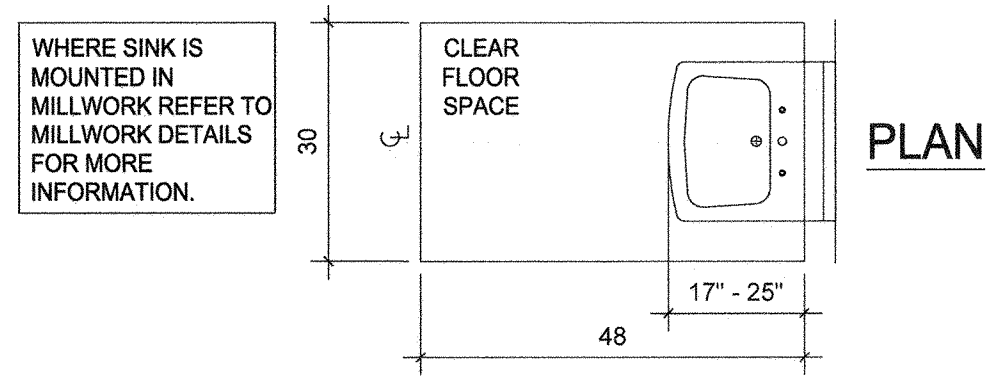
N.T.S.  
**A GRAB BARS & HANDRAILS**



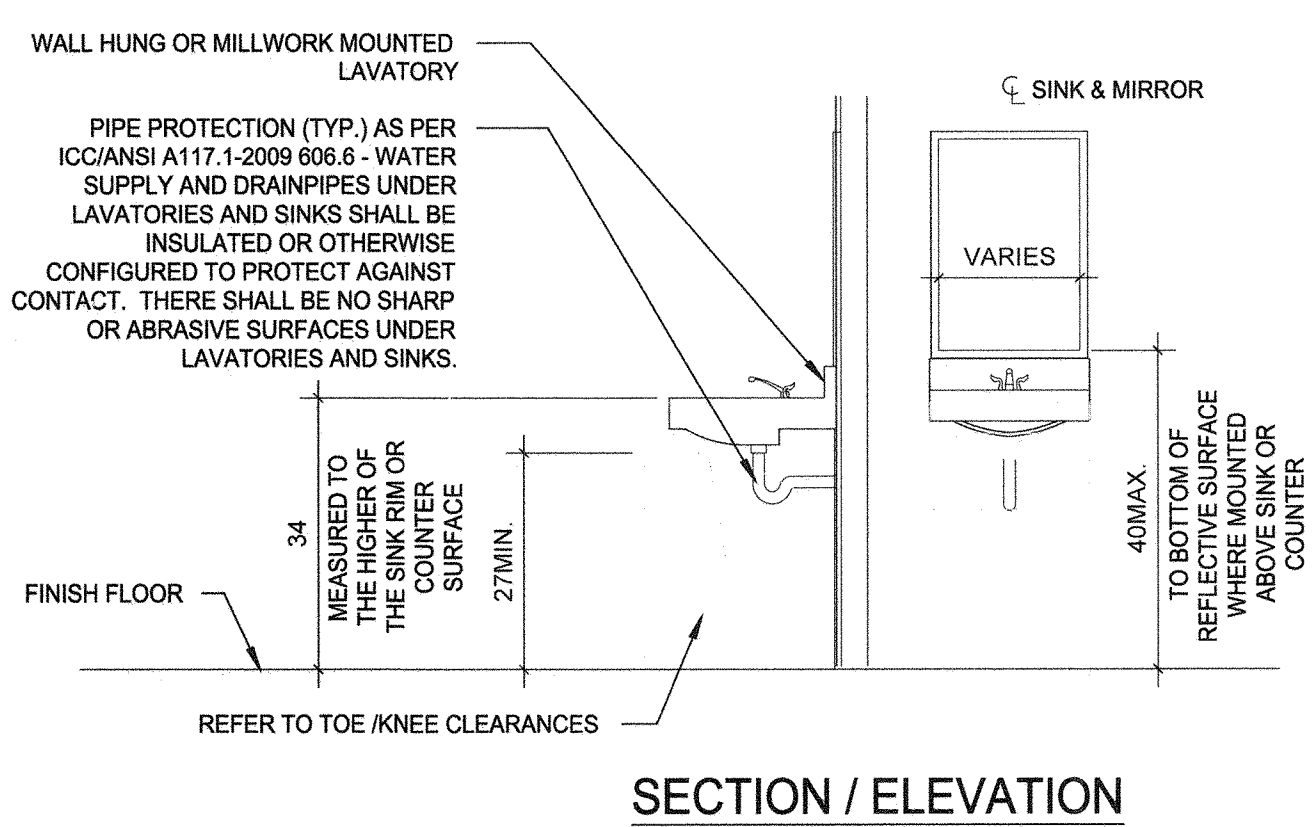
**1 TACTILE INTERIOR SIGN**



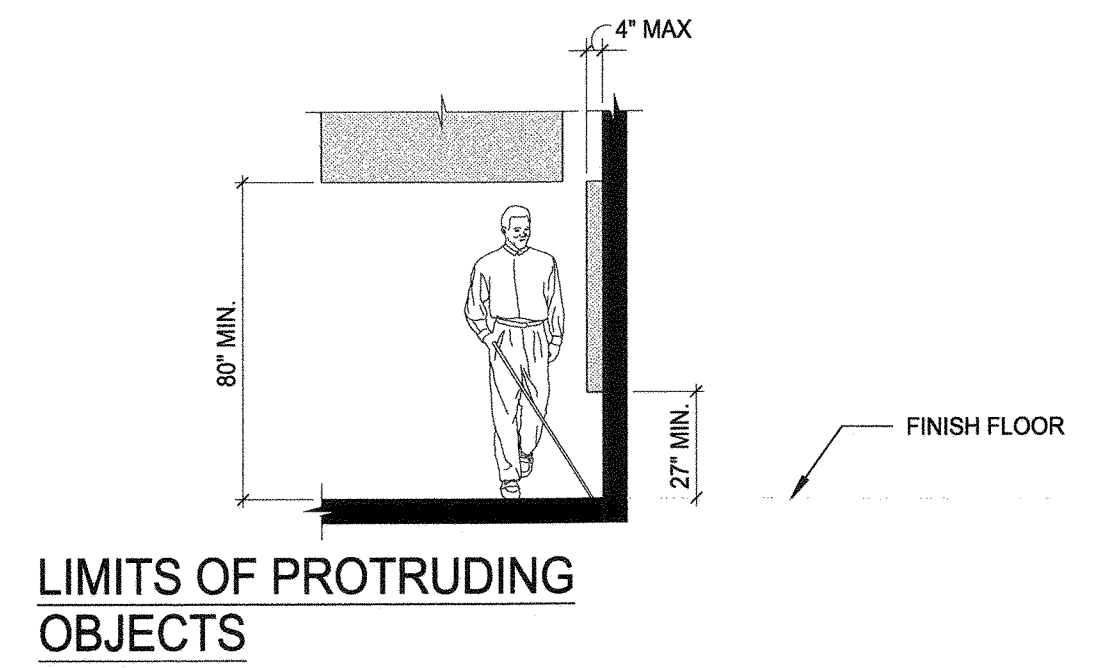
**4 TOE / KNEE CLEARANCES**



**2 LAVATORIES AND SINKS**



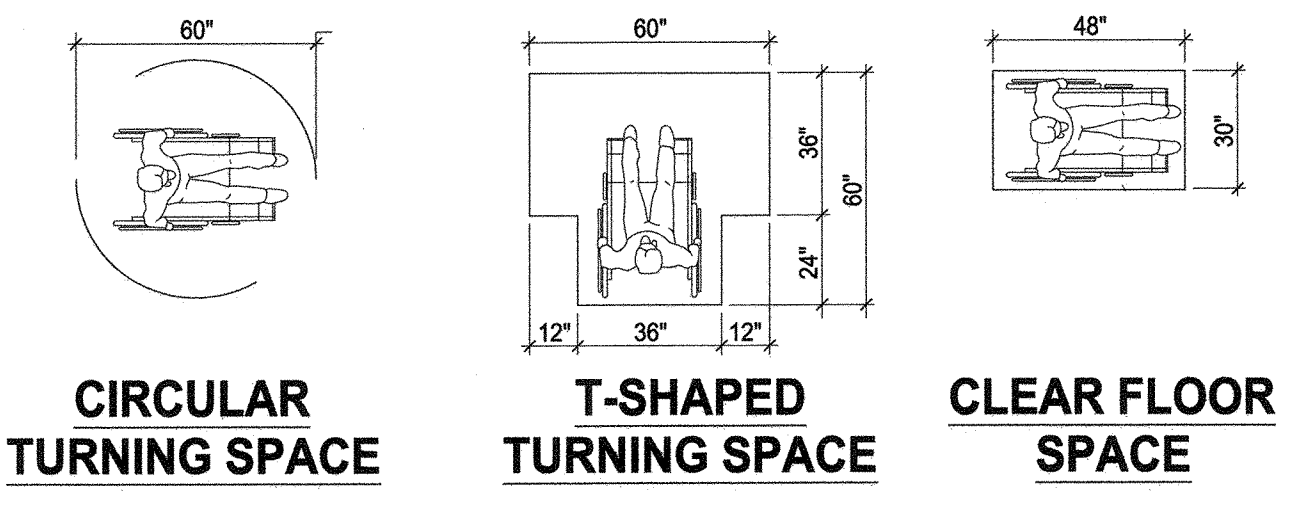
**5 PROTRUDING OBJECTS**



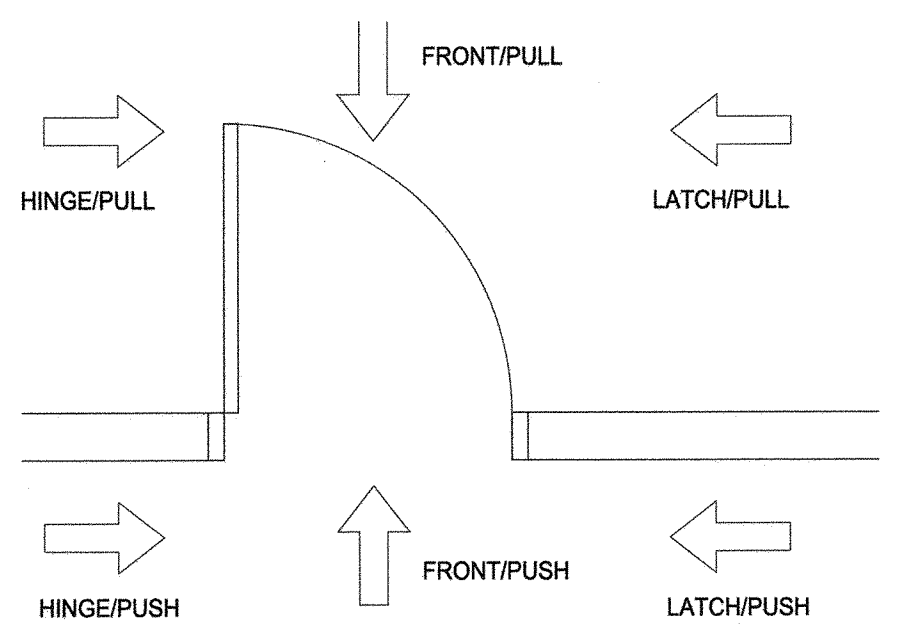
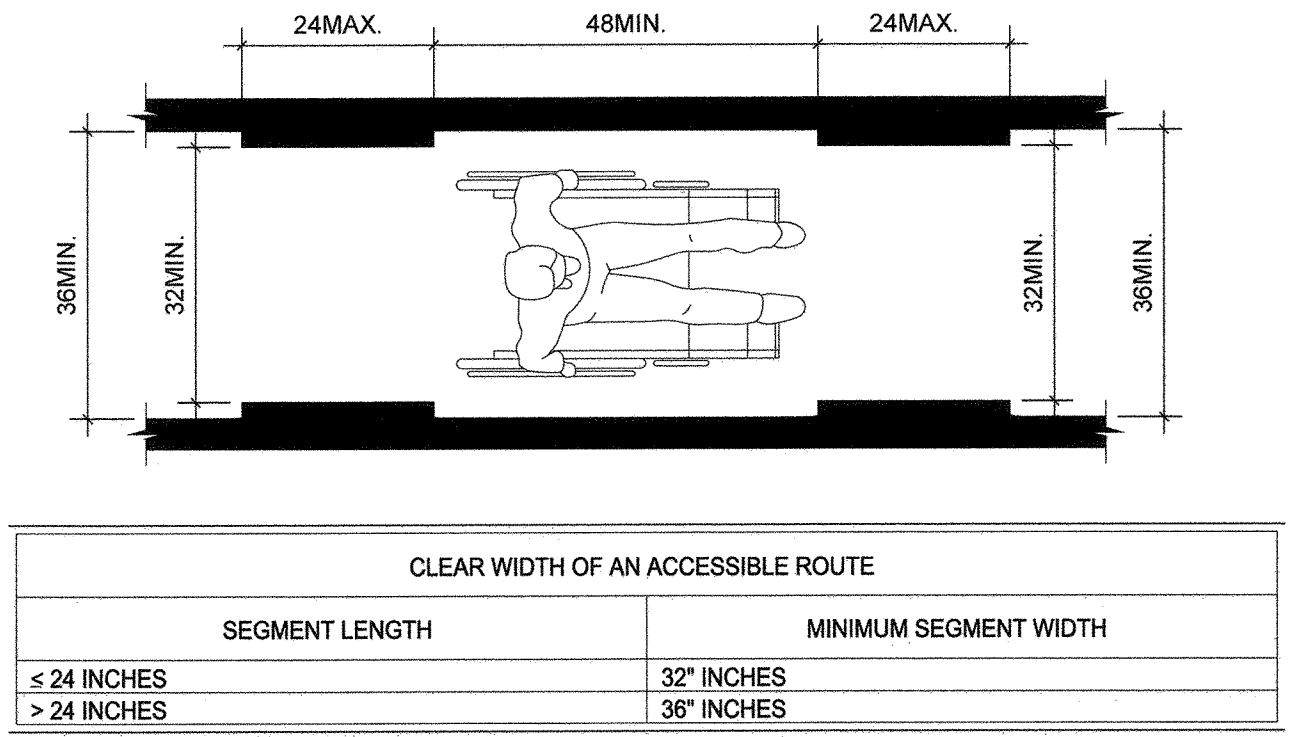
BARRIER-FREE STANDARDS INDICATED HEREIN ARE TYPICAL. DIMENSIONS SHOWN ARE TYPICAL UNLESS OTHERWISE INDICATED IN THE DRAWINGS.

- REFER TO SHEET G1002 FOR APPLICABLE CODES, STANDARDS, AND GUIDELINES.
- THE CLEAR WIDTH OF A PASSAGEWAY FOR A SINGLE WHEELCHAIR SHALL BE 36 INCHES.
- THE CLEAR FLOOR SPACE REQUIRED FOR A SINGLE WHEELCHAIR SHALL BE 30 INCHES BY 48 INCHES.
- THE CLEAR WIDTH OF AN ACCESSIBLE ROUTE SHALL BE 36 INCHES.
- PROTRUDING OBJECTS: OBJECTS WITH LEADING EDGES LOCATED MORE THAN 27 INCHES AND NOT MORE THAN 80 INCHES ABOVE THE FLOOR SHALL PROTRUDE NOT MORE THAN 4 INCHES FROM THE WALL.
- GUARDRAILS OR OTHER BARRIERS SHALL BE PROVIDED WHEN VERTICAL CLEARANCE OF AN AREA ADJOINING AN ACCESSIBLE ROUTE IS LESS THAN 80 INCHES HIGH. LEADING EDGES SHALL BE NO HIGHER THAN 27\"/>

**7 ACCESSIBILITY NOTES & INFO.**



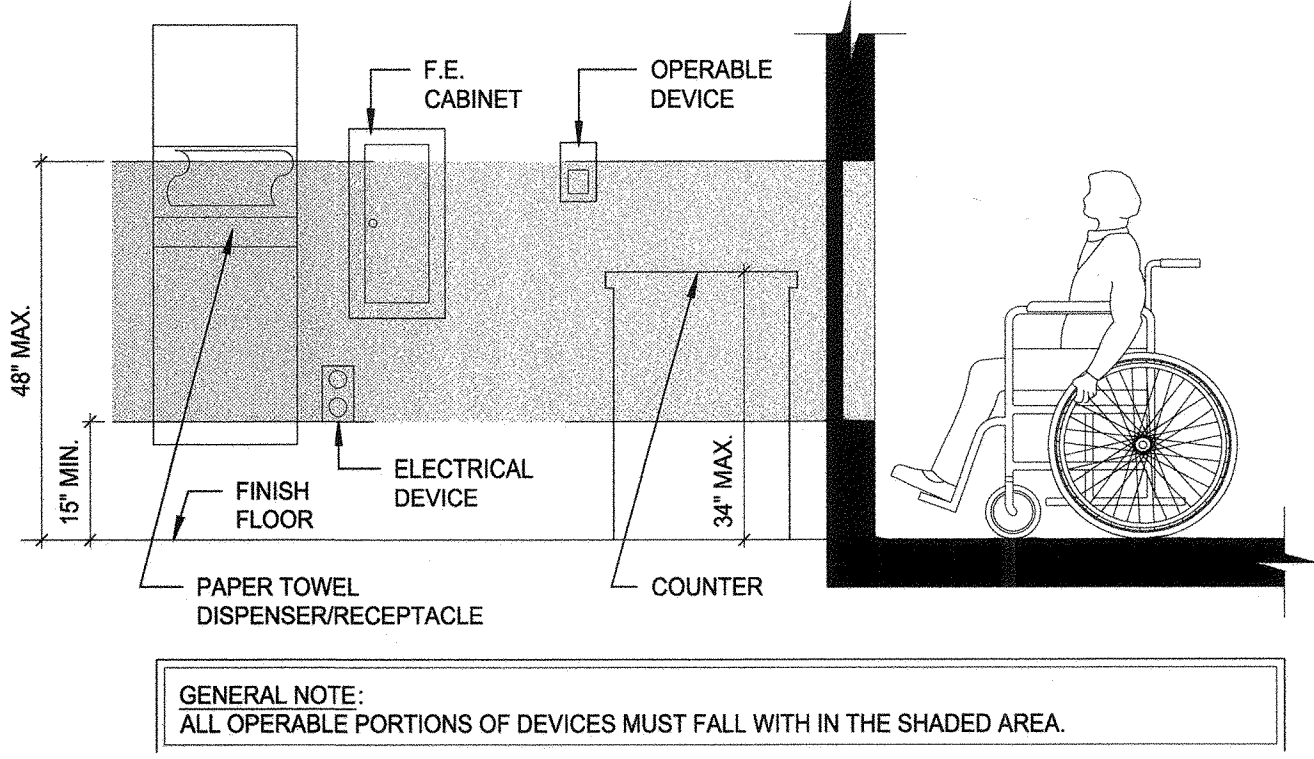
**8 ACCESSIBLE ROUTE**



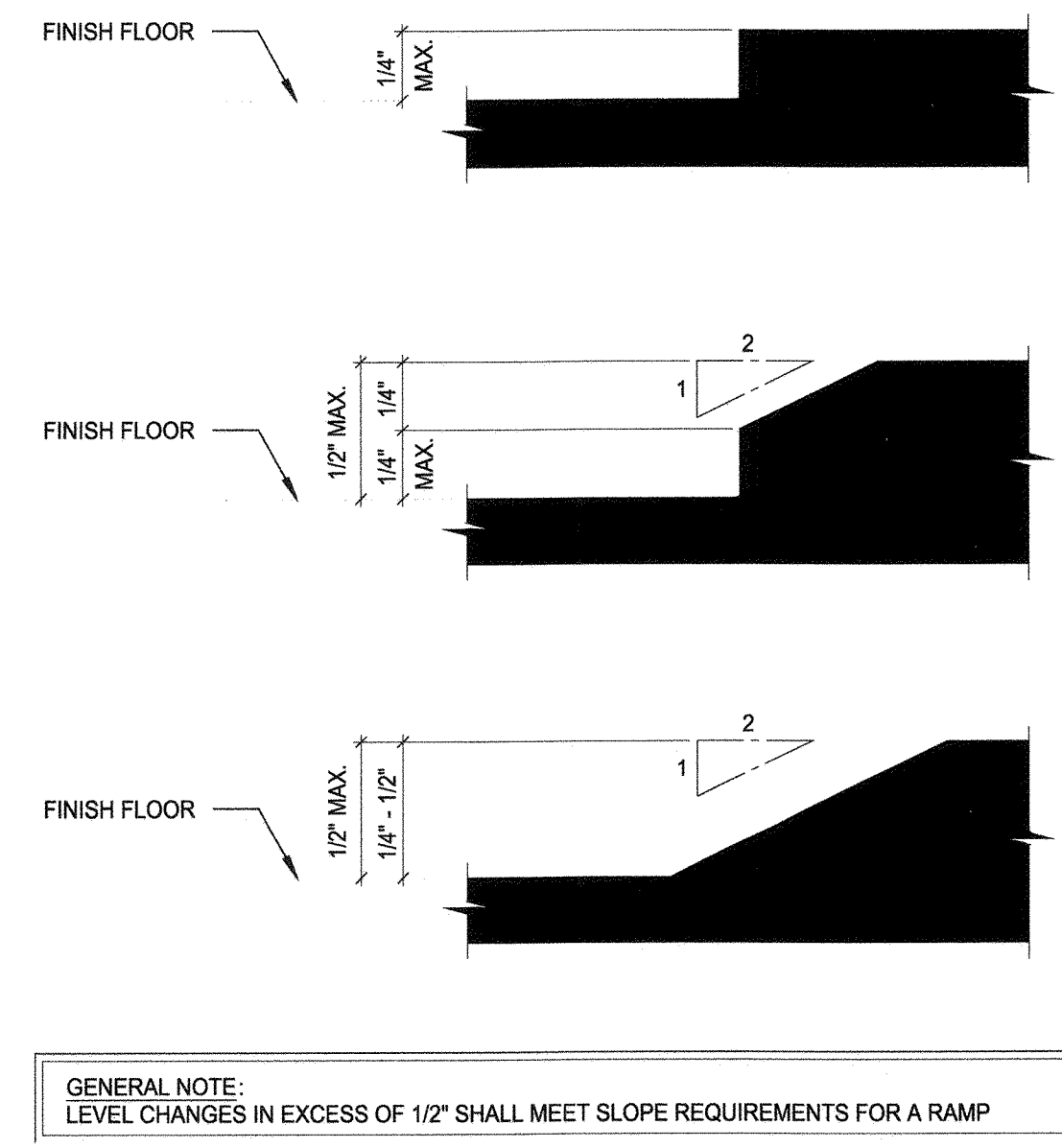
MANEUVERING CLEARANCES AT MANUAL SWINGING DOORS			
TYPE OF USE		MINIMUM MANEUVERING CLEARANCES	
APPROACH DIRECTION	DOOR SIDE	PERPENDICULAR TO DOORWAY	PARALLEL TO DOORWAY (BEYOND LATCH UNLESS NOTED)
FROM FRONT	PULL	60 INCHES	18 INCHES
FROM FRONT	PUSH	48 INCHES	0 INCHES (NOTE 3)
FROM HINGE SIDE	PULL	60 INCHES	36 INCHES
FROM HINGE SIDE	PULL	54 INCHES	42 INCHES
FROM HINGE SIDE	PUSH	42 INCHES (NOTE 1)	22 INCHES (NOTE 3 & 4)
FROM LATCH SIDE	PULL	48 INCHES (NOTE 2)	24 INCHES
FROM LATCH SIDE	PUSH	42 INCHES (NOTE 2)	24 INCHES

- NOTES:  
1. ADD 6\"/>

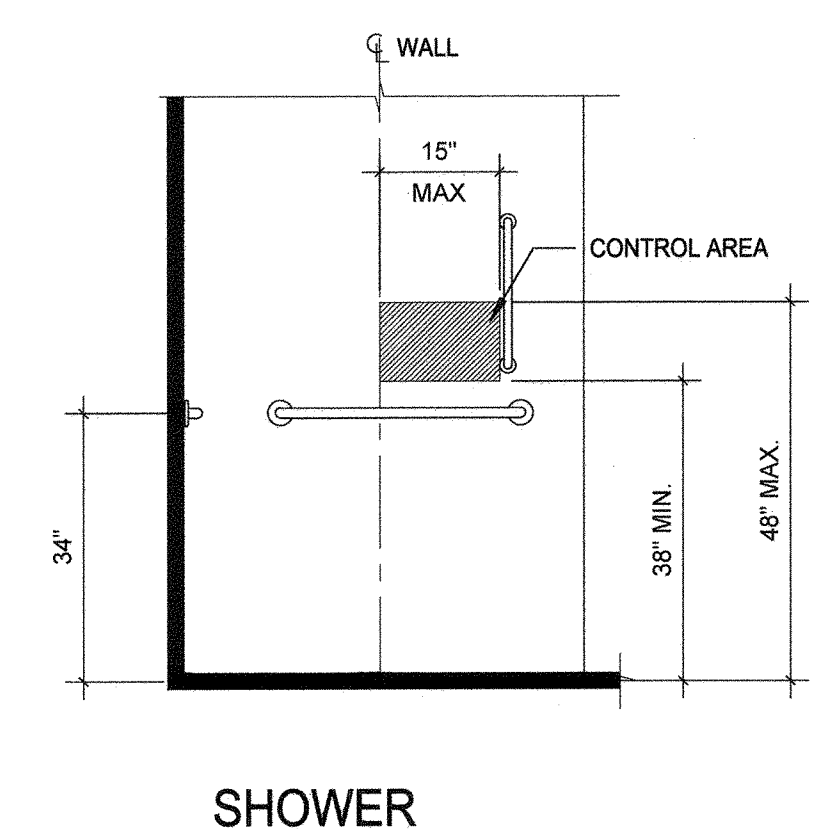
**6 REACH / MOUNTING HEIGHTS**



**9 LEVEL CHANGES - (UP TO 1/2\"/>**



**10 CONTROL AND HAND SHOWER**



THE PLANS, IDEAS, ARRANGEMENTS, AND DESIGNS INDICATED OR REPRESENTED BY THIS DRAWING (S) ARE OWNED BY, AND ARE THE PROPERTY OF FRANK V. STURGEON, ARCHITECT, AND ARE INTENDED ONLY IN CONNECTION WITH THIS SPECIFIC PROJECT. THESE DRAWINGS SHALL NOT BE USED, IN WHOLE OR IN PART FOR ANY OTHER PURPOSE FOR WHICH THEY WERE NOT ORIGINALLY INTENDED WITHOUT WRITTEN PERMISSION FROM FRANK V. STURGEON, AIA ARCHITECT. © 2020 FRANK V. STURGEON, AIA ARCHITECT EXPRESSLY RESERVES HIS COMMON LAW COPYRIGHT AND OTHER PROPERTY RIGHTS IN THESE PLANS, SPECIFICATIONS, AND IDEAS. THESE DOCUMENTS ARE NOT TO BE REPRODUCED, CHANGED, OR COPIED (ELECTRONICALLY OR MANUALLY) IN ANY FORM OR MANNER WHATSOEVER NOR ARE THEY TO BE ASSIGNED TO ANY THIRD PARTY WITH OUT OBTAINING WRITTEN PERMISSION OR CONSENT FROM FRANK V. STURGEON, AIA ARCHITECT. © 2020

AG  
A DESIGN GROUP, LLC  
ART-ARCHITECTURE-ENGINEERING  
2787 HILL ROAD  
VIENNA, VA 22181  
FRANK V. STURGEON, AIA  
703.930.5226  
FRANK@ADG10.COM

POHICK BAY BATH HOUSE  
ADA RENOVATIONS  
POHICK BAY REGIONAL PARK  
6501 POHICK BAY DRIVE  
LORTON, VA 22079  
NORTHERN, VA

PROJECT PHASE:  
PERMIT SET  
DATE:  
1-10-2021

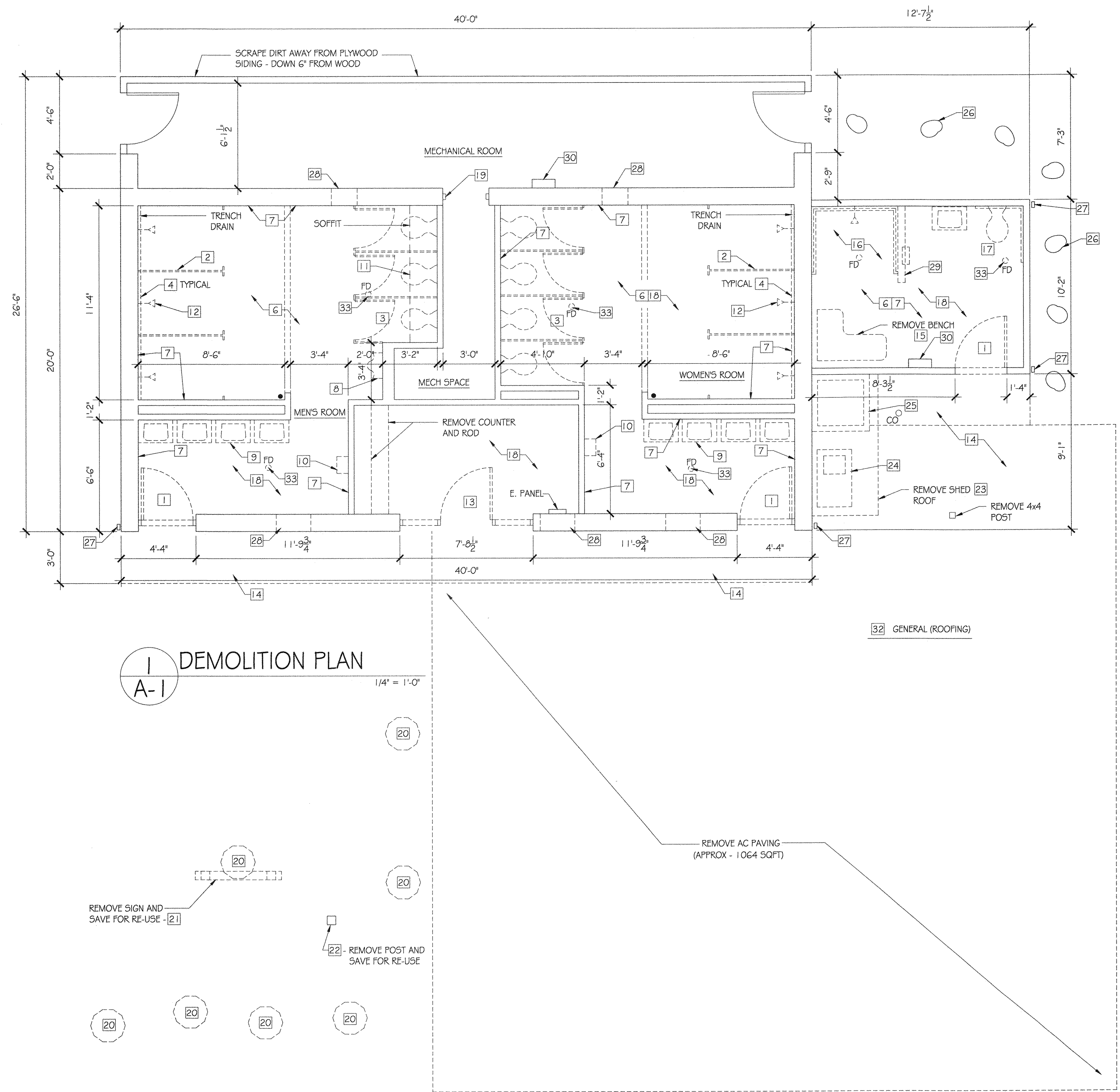




THE PLANS, IDEAS, ARRANGEMENTS, AND DESIGNS INDICATED OR REPRESENTED BY THIS DRAWING (S) ARE OWNED BY, AND ARE THE PROPERTY OF FRANK V. STURGEON, ARCHITECT, AND ARE INTENDED ONLY IN CONNECTION WITH THIS SPECIFIC PROJECT. THESE DRAWINGS SHALL NOT BE USED, IN WHOLE OR IN PART FOR ANY OTHER PURPOSE FOR WHICH THEY WERE NOT ORIGINALLY INTENDED WITHOUT WRITTEN PERMISSION FROM FRANK V. STURGEON, AIA ARCHITECT. © 2020

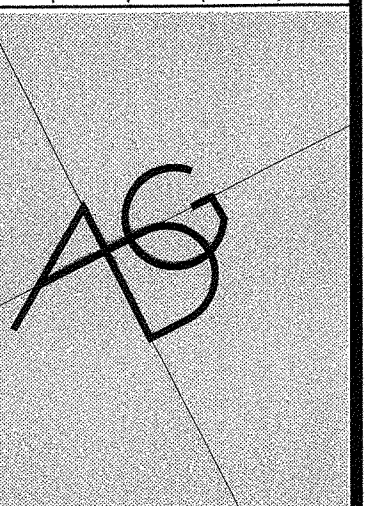
FRANK V. STURGEON, AIA ARCHITECT EXPRESSLY RESERVES HIS COMMON LAW COPYRIGHT AND OTHER PROPERTY RIGHTS IN THESE PLANS, SPECIFICATIONS, AND IDEAS. THESE DOCUMENTS ARE NOT TO BE REPRODUCED, CHANGED, OR COPIED (ELECTRONICALLY OR MANUALLY) IN ANY FORM OR MANNER WHATSOEVER NOR ARE THEY TO BE ASSIGNED TO ANY THIRD PARTY WITHOUT OBTAINING WRITTEN PERMISSION OR CONSENT FROM FRANK V. STURGEON, AIA ARCHITECT. © 2020

- PLAN KEYED NOTES
- 1 REMOVE HOLLOW METAL STEEL DOOR FRAME. PREPARE OPENING FOR NEW HOLLOW METAL FRAME AND DOOR
  - 2 REMOVE METAL SHOWER PARTITIONS
  - 3 REMOVE METAL TOILET PARTITIONS
  - 4 REMOVE PIPES AND STAINLESS STEEL COVER
  - 5 NOT USED
  - 6 REMOVE FLOOR TILE. PREPARE CONCRETE FLOOR FOR NEW TILE AND FINISH
  - 7 REMOVE TILE AND WAINSCOT TILE FROM WALL (TYP ALL WALLS)
  - 8 REMOVE URINAL. PREPARE WALL FOR NEW URINAL
  - 9 REMOVE SINKS AND COUNTER, REMOVE MIRRORS AND SOAP DISPENSER
  - 10 REMOVE ELECTRIC HAND DRYER
  - 11 REMOVE GYP. BOARD FROM SOFFIT, PREPARE SOFFIT FOR NEW GYP. BOARD FINISH
  - 12 REMOVE (6) SHOWER HEADS, PIPING AND STAINLESS STEEL
  - 13 REMOVE DOOR, FRAME, THRESHOLD, AND SIDE LITES
  - 14 REMOVE CONCRETE WALK
  - 15 REMOVE EXISTING SHOWER SEAT
  - 16 REMOVE SHOWER AND GRAB BARS
  - 17 REMOVE TOILET FIXTURES, GRAB BARS AND SINK
  - 18 REMOVE TILE FROM WALLS, PREPARE WALLS FOR NEW TILE AND FINISH
  - 19 REMOVE METAL DOOR FRAME, REMOVE WALL OPENING
  - 20 RELOCATE (7) LARGE ROCKS, SEE PARK MANAGER FOR LOCATION (RELOCATED BY OWNER)
  - 21 RELOCATE PARK SIGN (RELOCATED BY OWNER)
  - 22 RELOCATE DOG WASTE SIGN AND STAND (RELOCATED BY OWNER)
  - 23 REMOVE SHED ROOF OVERHANG
  - 24 REMOVE SINK AND COUNTER
  - 25 REMOVE CONCRETE CURB AND BASIN
  - 26 REMOVE BROKEN PIECES OF AC PAVING (SEE DEDUCTED ALTERNATE #1)
  - 27 REMOVE EXISTING DOWNSPOUTS
  - 28 REMOVE EXISTING METAL VENTS. REPAIR BRICK AND FILL IN WITH BRICK
  - 29 REMOVE PARTITION WALL
  - 30 REMOVE EXISTING WALL HEATER
  - 31 REMOVE "CURB" IN CONCRETE FLOOR
  - 32 REMOVE SHINGLES AND UNDERLAYMENT
  - 33 PREPARE FLOOR FOR NEW FLOOR DRAIN



1 DEMOLITION PLAN  
A-1  
1/4" = 1'-0"

NO.	REVISIONS



A DESIGN GROUP, LLC  
ART-ARCHITECTURE-ENGINEERING  
2787 HILL ROAD  
VIENNA, VA 22181  
FRANK V. STURGEON, AIA  
703.938.5226  
FRANK@ADG10.COM

POHICK BAY BATH HOUSE  
ADA RENOVATIONS  
POHICK BAY REGIONAL PARK  
6501 POHICK BAY DRIVE  
LORTON, VA 22079  
NORTHERN, VA

PROJECT PHASE:  
PERMIT SET

DATE:  
1-10-2021



SHEET No.  
A-1

THE PLANS, IDEAS, ARRANGEMENTS, AND DESIGNS INDICATED OR REPRESENTED BY THIS DRAWING (S) ARE OWNED BY, AND ARE THE PROPERTY OF FRANK V. STURGEON, ARCHITECT, AND ARE INTENDED ONLY IN CONNECTION WITH THIS SPECIFIC PROJECT. THESE DRAWINGS SHALL NOT BE USED, IN WHOLE OR IN PART FOR ANY OTHER PURPOSE FOR WHICH THEY WERE NOT ORIGINALLY INTENDED WITHOUT WRITTEN PERMISSION FROM FRANK V. STURGEON, AIA ARCHITECT. © 2020

FRANK V. STURGEON, AIA ARCHITECT EXPRESSLY RESERVES HIS COMMON LAW COPYRIGHT AND OTHER PROPERTY RIGHTS IN THESE PLANS, SPECIFICATIONS, AND IDEAS. THESE DOCUMENTS ARE NOT TO BE REPRODUCED, CHANGED, OR COPIED (ELECTRONICALLY OR MANUALLY) IN ANY FORM OR MANNER WHATSOEVER NOR ARE THEY TO BE ASSIGNED TO ANY THIRD PARTY WITHOUT OBTAINING WRITTEN PERMISSION OR CONSENT FROM FRANK V. STURGEON, AIA ARCHITECT. © 2020

REVISIONS  
 2-9-2021

**AS**

A DESIGN GROUP, LLC  
 ART-ARCHITECTURE-ENGINEERING  
 2767 HILL ROAD  
 VIENNA, VA 22181  
 FRANK V. STURGEON, AIA  
 703.938.5226  
 FRANK@ADG10.COM

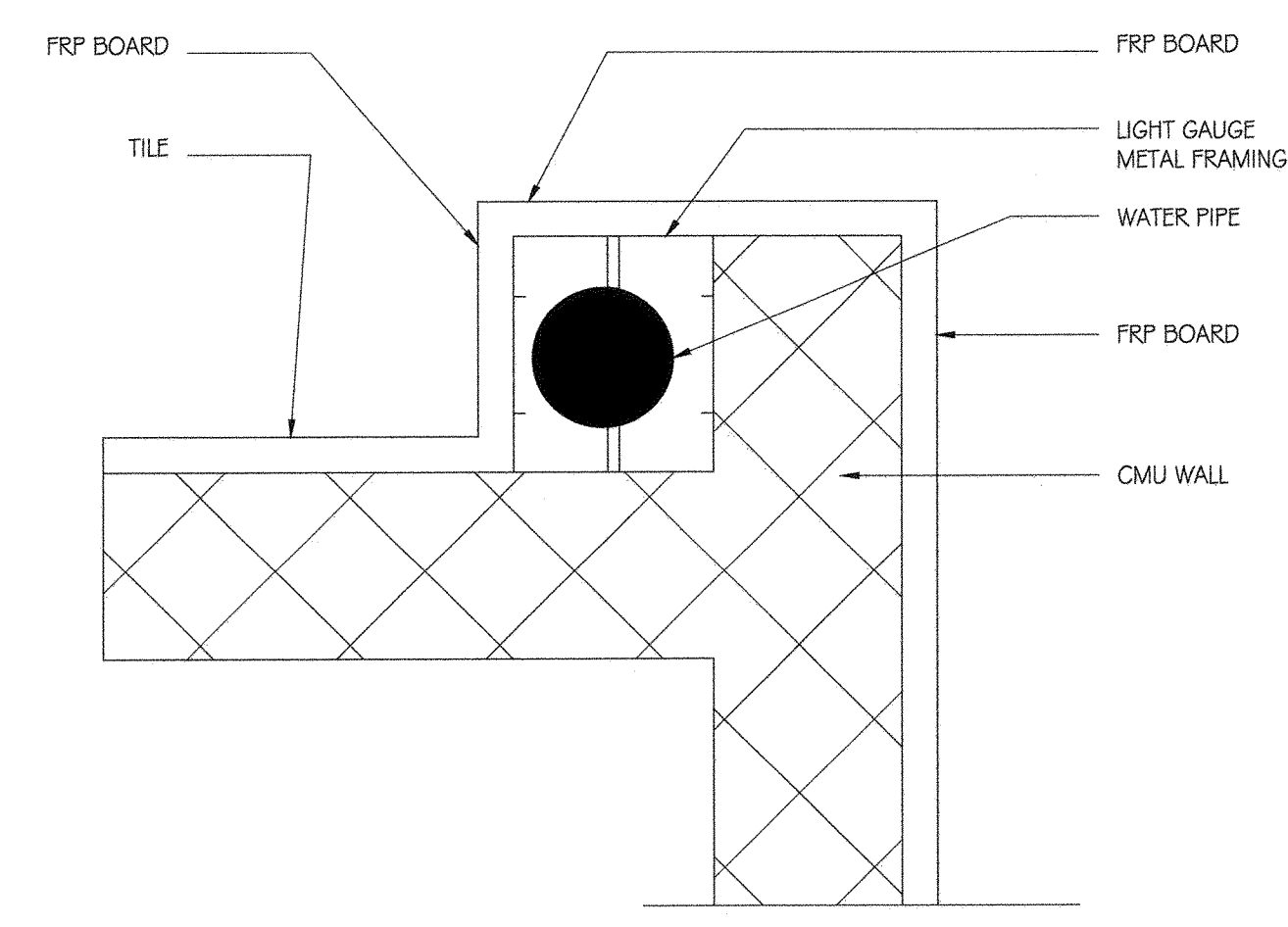
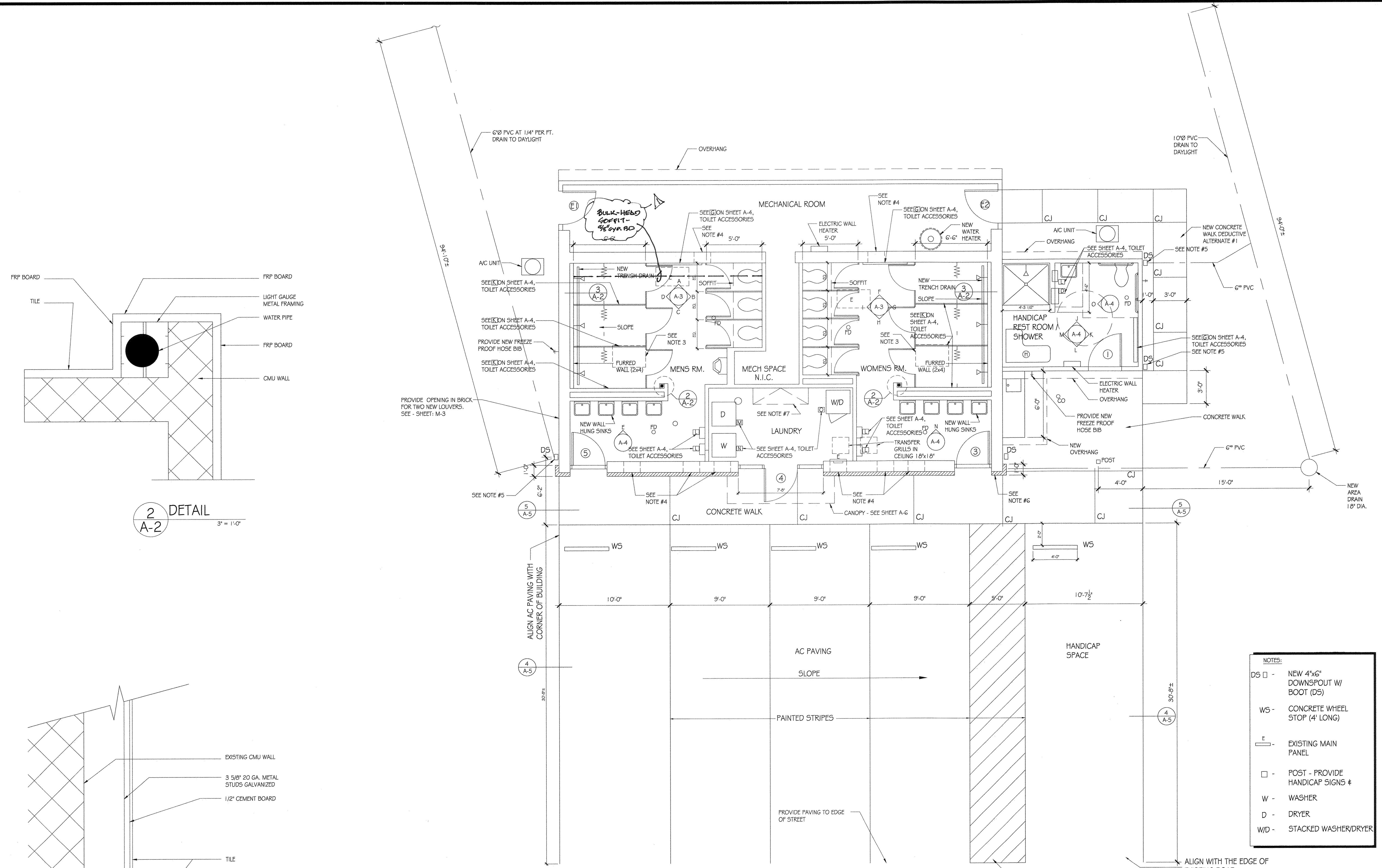
**POHICK BAY BATH HOUSE  
 ADA RENOVATIONS**  
 POHICK BAY REGIONAL PARK  
 6501 POHICK BAY DRIVE  
 LORTON, VA 22079  
 NORTHERN, VA

PROJECT PHASE:  
 PERMIT SET

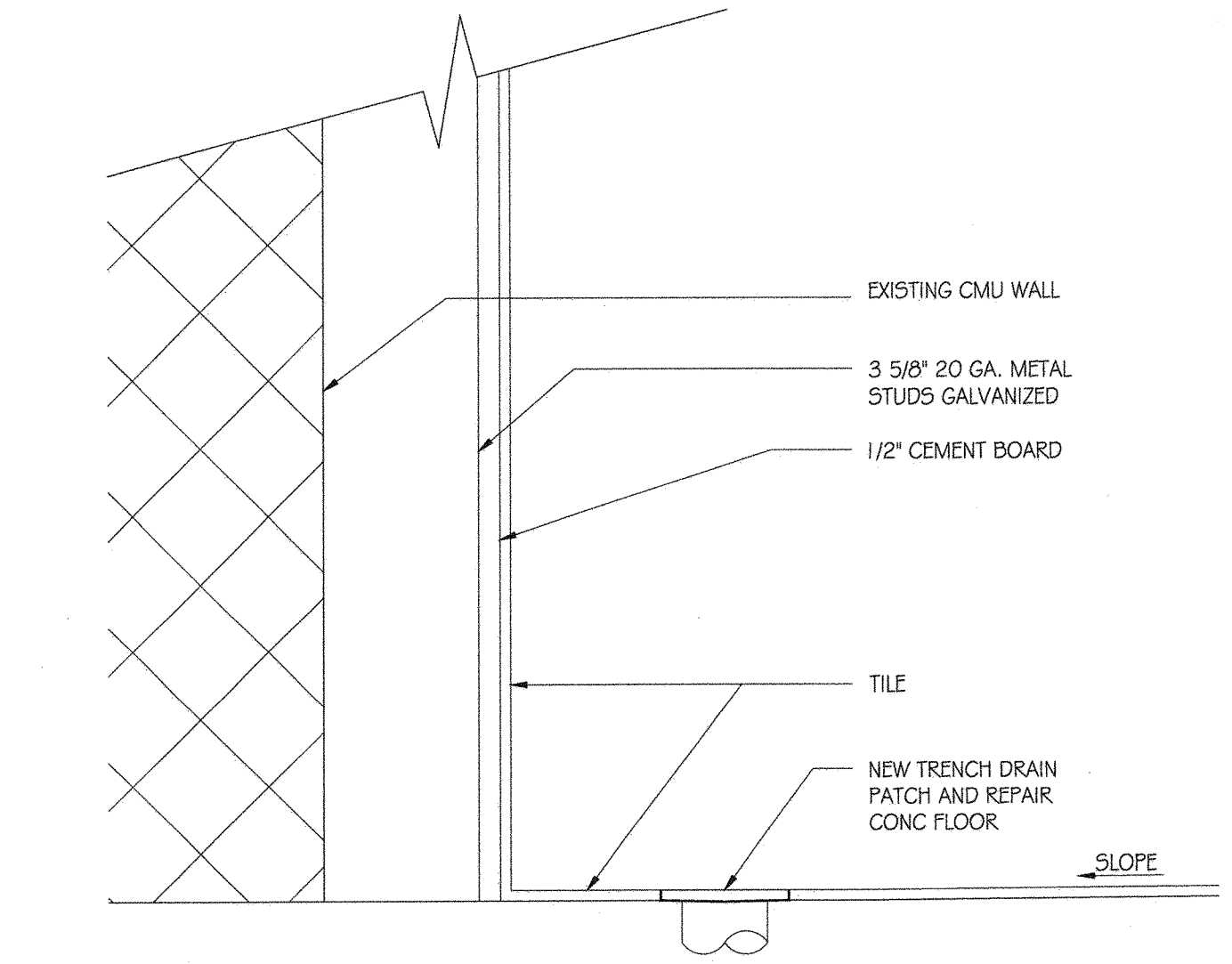
DATE:  
 1-10-2021



SHEET No.  
**A-2**



**2** DETAIL  
 A-2  
 3" = 1'-0"



**3** DETAIL  
 A-2  
 3" = 1'-0"

**1** NEW PLAN  
 A-2  
 1/4" = 1'-0"

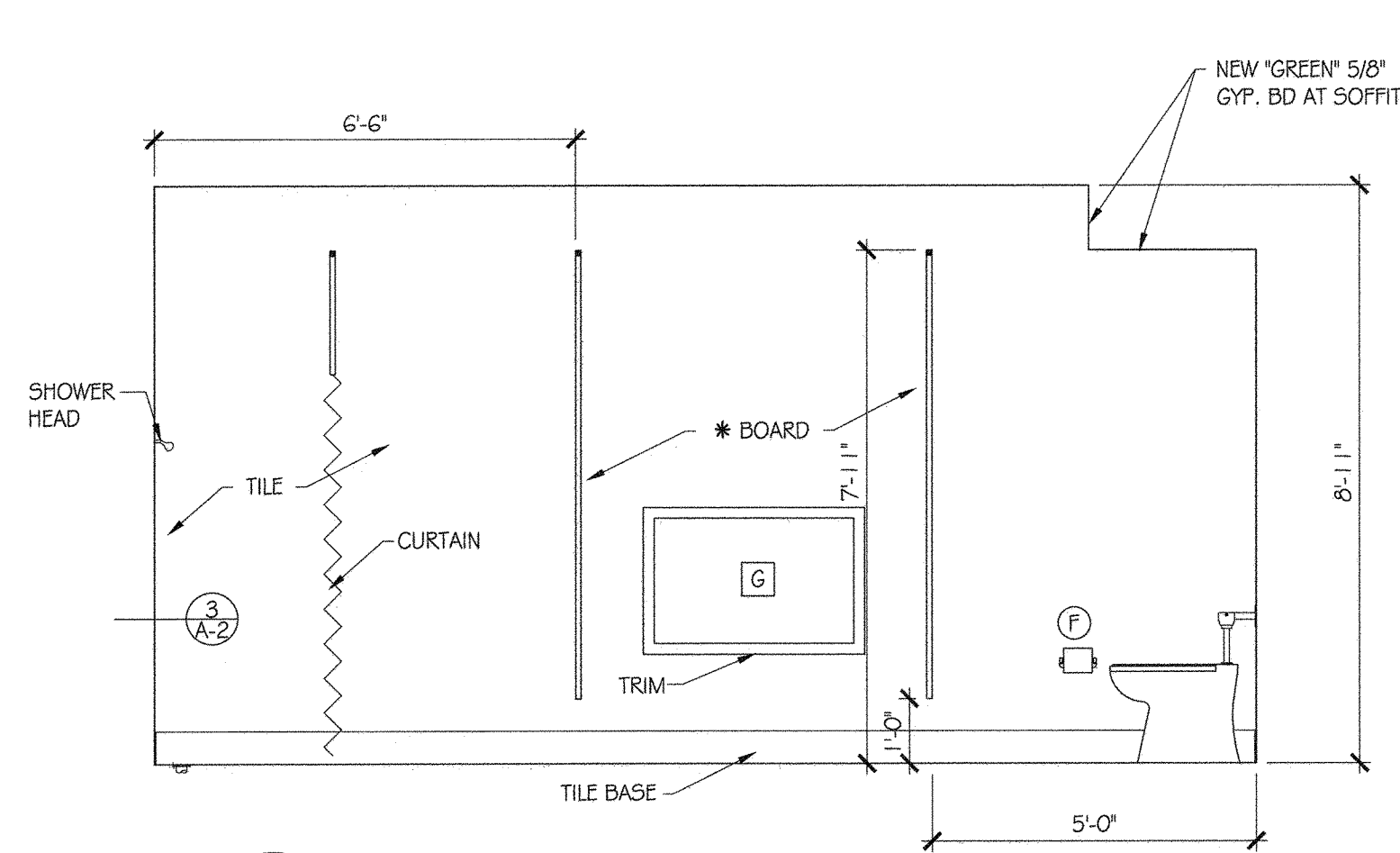


- NOTES:
1. † NEW FREEZE PROOF HOSE BIB
  2. REMOVE EXISTING ALUMINUM VENTS AND REPLACE WITH NEW VENTS - PATCH AND REPAIR BROKEN BRICKS TO MATCH EXISTING (6-TOTAL) VENTS: HOHMANN AND BARNARD, INC - THRU WALL ALUMINUM BRICK VENTS, STYLE F, MATCH EXISTING SIZES
  3. CEILING ACCESS: KARP OR EQUAL 18"x18" PROVIDE ALL SHEET METAL SUPPORT
  4. REMOVE CAST IRON VENTS, FILL IN WITH BRICK AND INTERIOR WALL FINISH (TYPICAL) PATCH TO MATCH BRICK AND MORTAR
  5. DOWNSPOUT 3"x4" BOOT- J.R. HOE AND SONS POWER COATED 3"x4" (BELOW GRADE DISCHARGE) SERIES A, LENGTH 16"
  6. PATCH AND REPAIR BRICK TO MATCH BRICK AND MORTAR
  7. FOLDING WALL TABLE - 5' X 18"
  8. CULTURED STONE FACING SEE SHEET A-6.

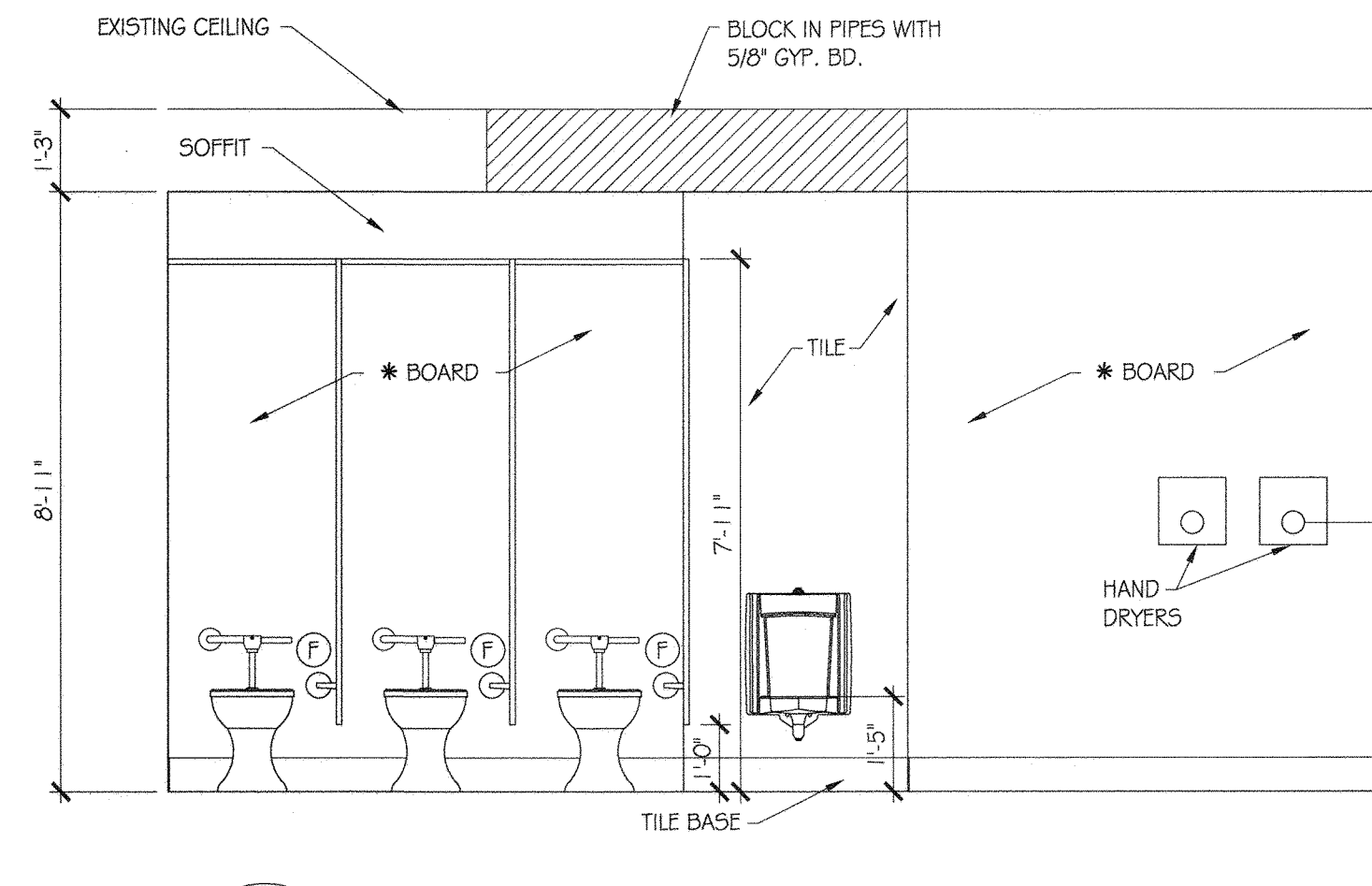
- NOTES:
- DS □ - NEW 4"x6" DOWNSPOUT W/ BOOT (DS)
  - WS - CONCRETE WHEEL STOP (4' LONG)
  - E - EXISTING MAIN PANEL
  - - POST - PROVIDE HANDICAP SIGNS ‡
  - W - WASHER
  - D - DRYER
  - W/D - STACKED WASHER/DRYER



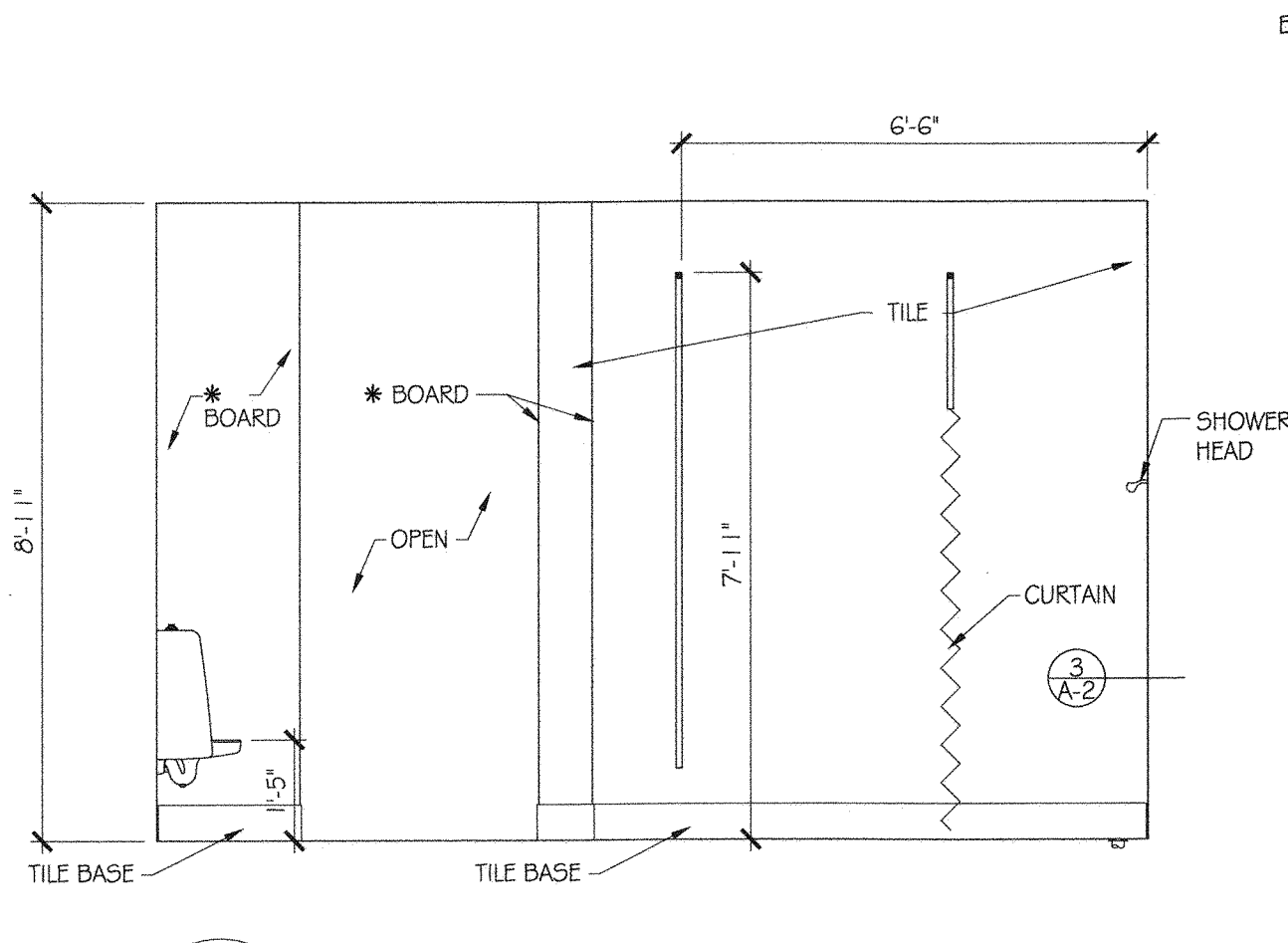
THE PLANS, IDEAS, ARRANGEMENTS, AND DESIGNS INDICATED OR REPRESENTED BY THIS DRAWING (S) ARE OWNED BY, AND ARE THE PROPERTY OF FRANK V. STURGEON, ARCHITECT, AND ARE INTENDED ONLY IN CONNECTION WITH THIS SPECIFIC PROJECT. THESE DRAWINGS SHALL NOT BE USED, IN WHOLE OR IN PART FOR ANY OTHER PURPOSE FOR WHICH THEY WERE NOT ORIGINALLY INTENDED WITHOUT WRITTEN PERMISSION FROM FRANK V. STURGEON, AIA ARCHITECT. © 2020 FRANK V. STURGEON, AIA ARCHITECT EXPRESSLY RESERVES HIS COMMON LAW COPYRIGHT AND OTHER PROPERTY RIGHTS IN THESE PLANS, SPECIFICATIONS, AND IDEAS. THESE DOCUMENTS ARE NOT TO BE REPRODUCED, CHANGED, OR COPIED (ELECTRONICALLY OR MANUALLY) IN ANY FORM OR MANNER WHATSOEVER NOR ARE THEY TO BE ASSIGNED TO ANY THIRD PARTY WITHOUT OBTAINING WRITTEN PERMISSION OR CONSENT FROM FRANK V. STURGEON, AIA ARCHITECT. © 2020



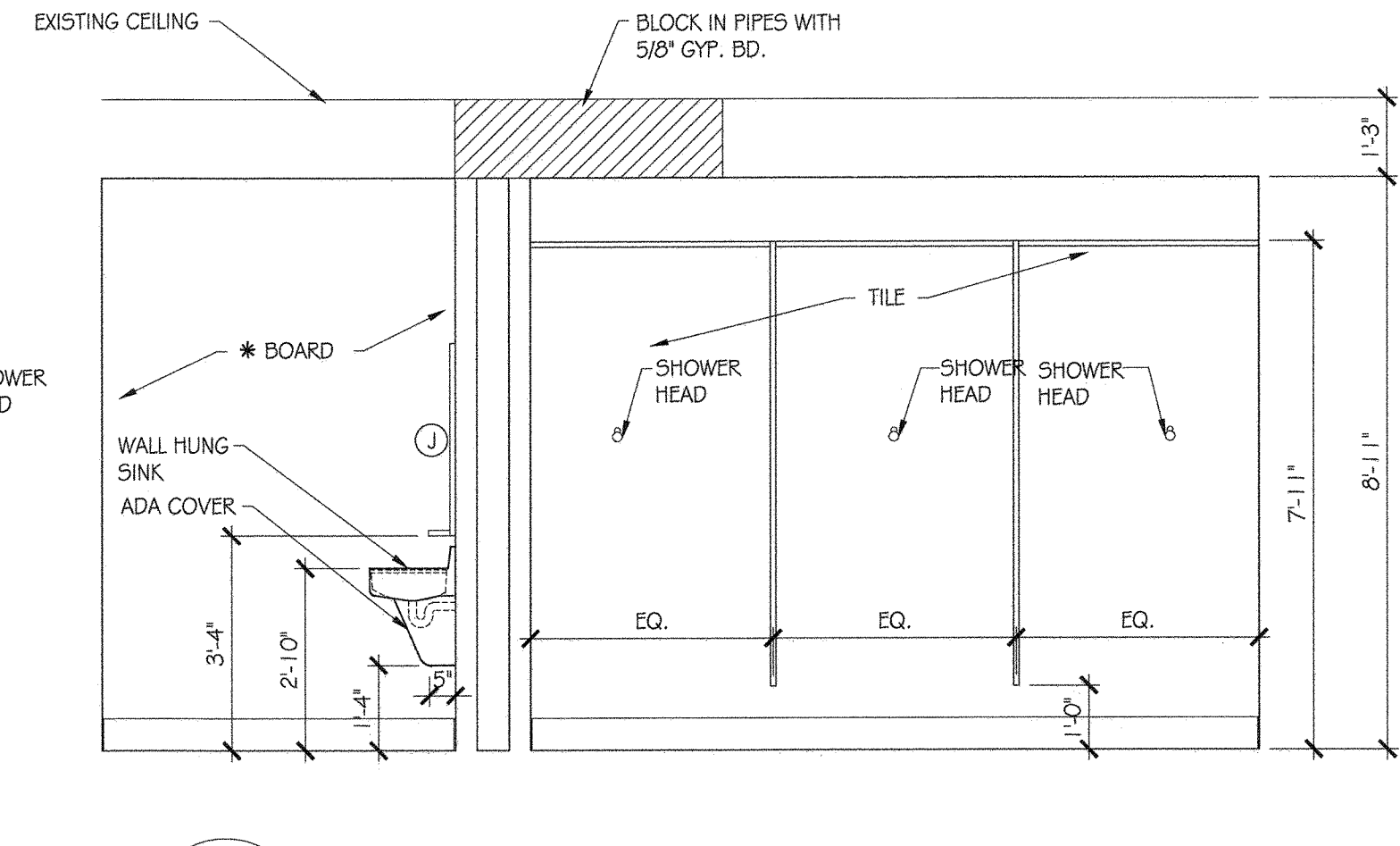
**A** ELEVATION  
A-3  
3/8" = 1'-0"



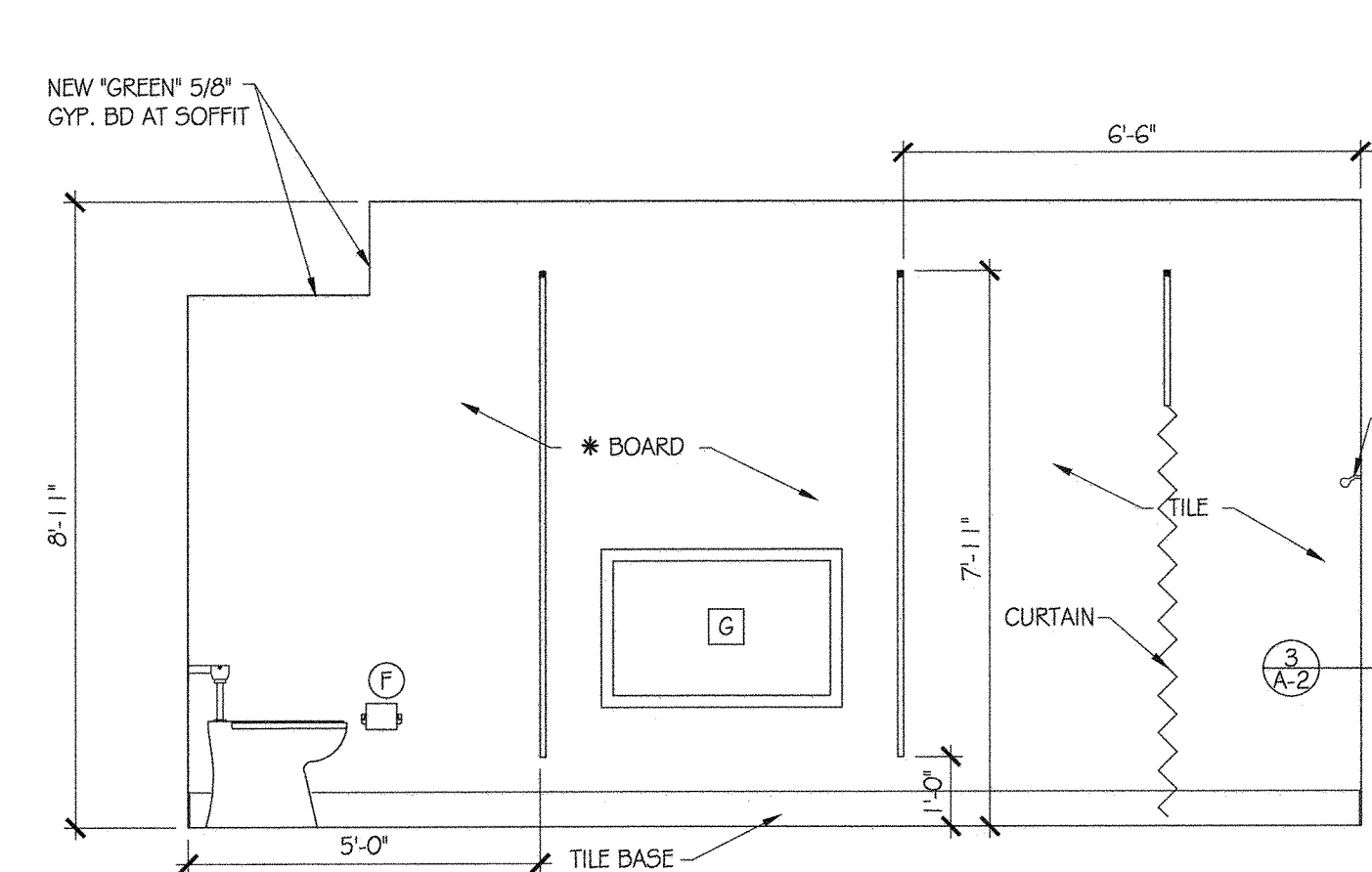
**B** ELEVATION  
A-3  
3/8" = 1'-0"



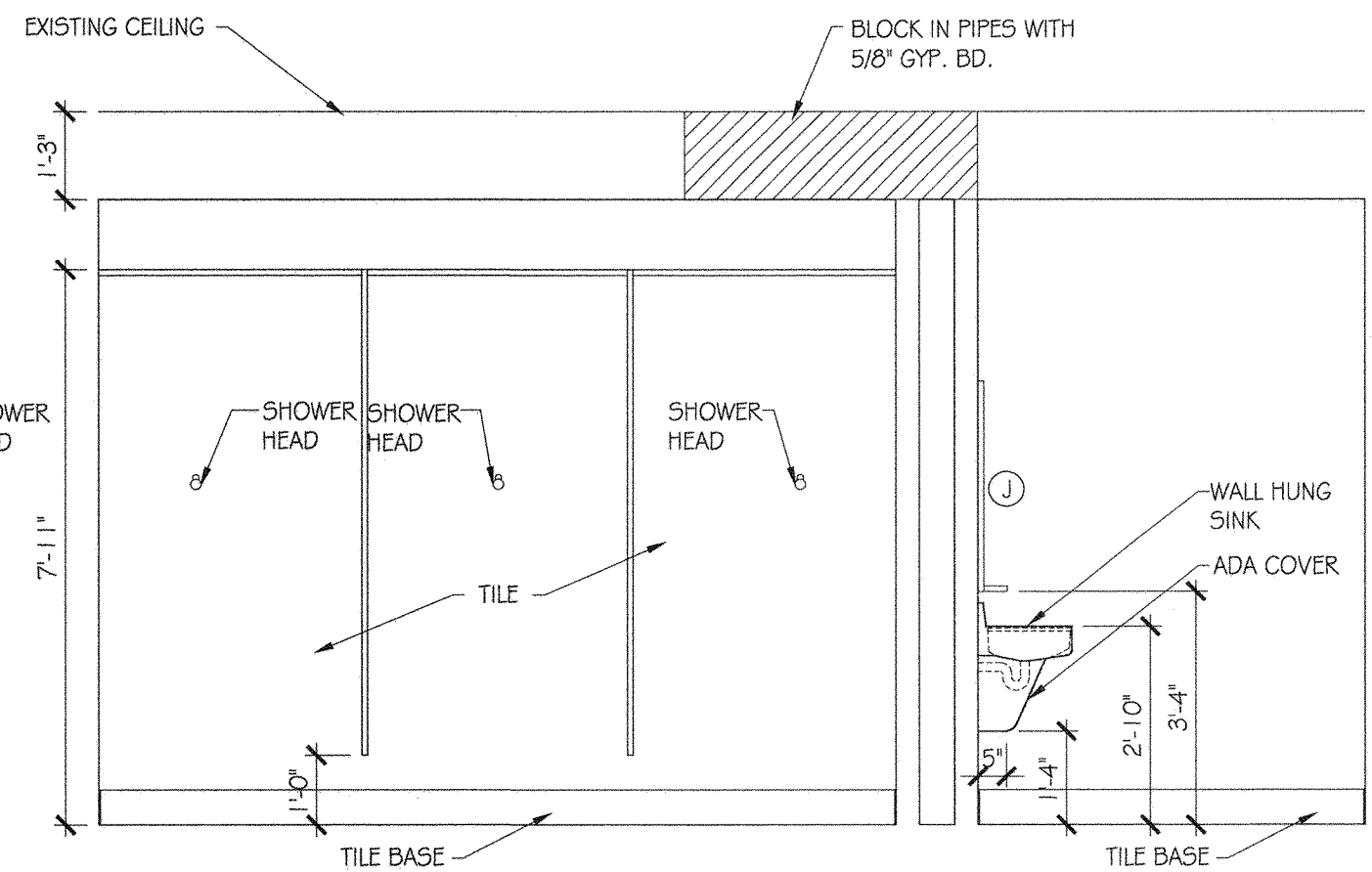
**C** ELEVATION  
A-3  
3/8" = 1'-0"



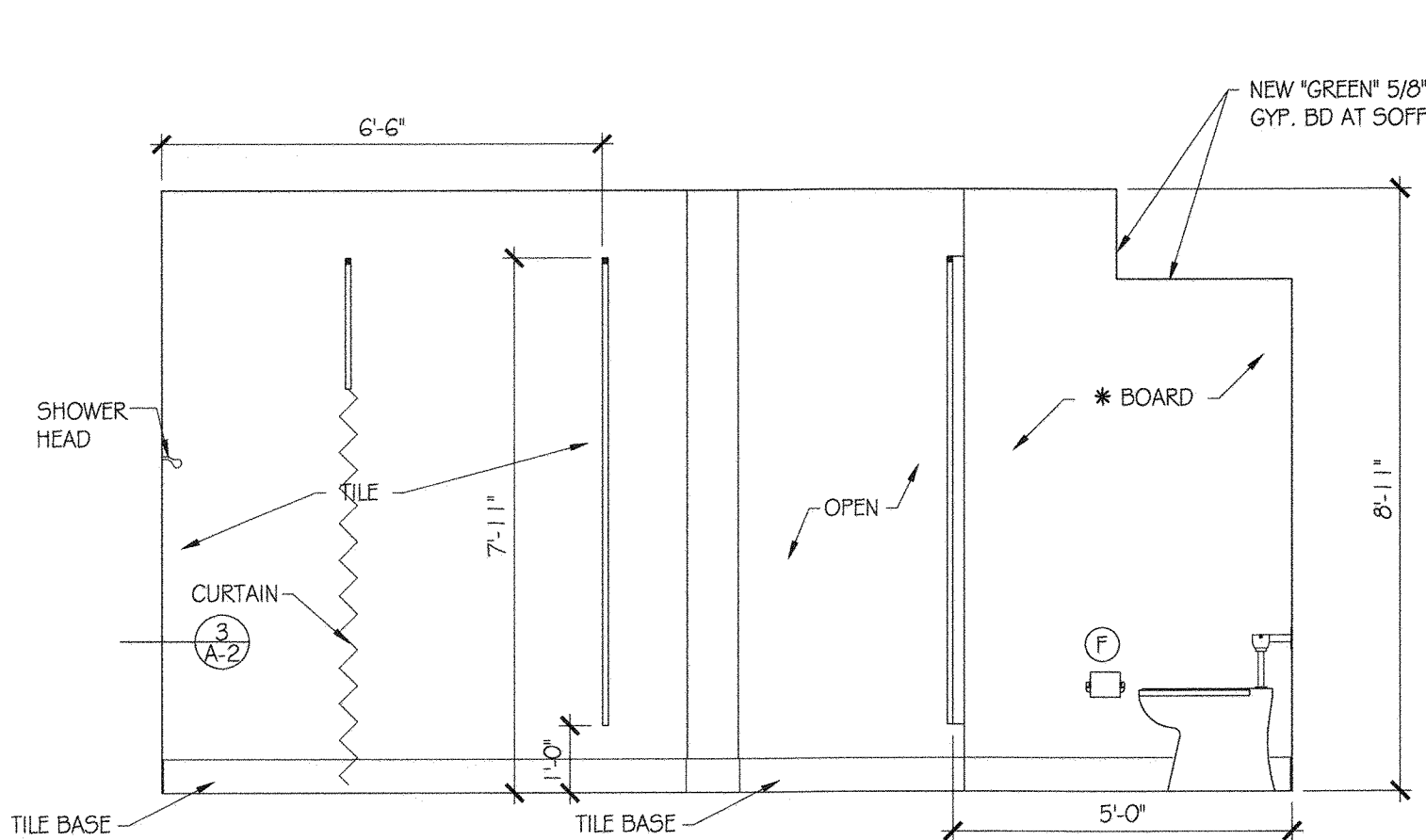
**D** ELEVATION  
A-3  
3/8" = 1'-0"



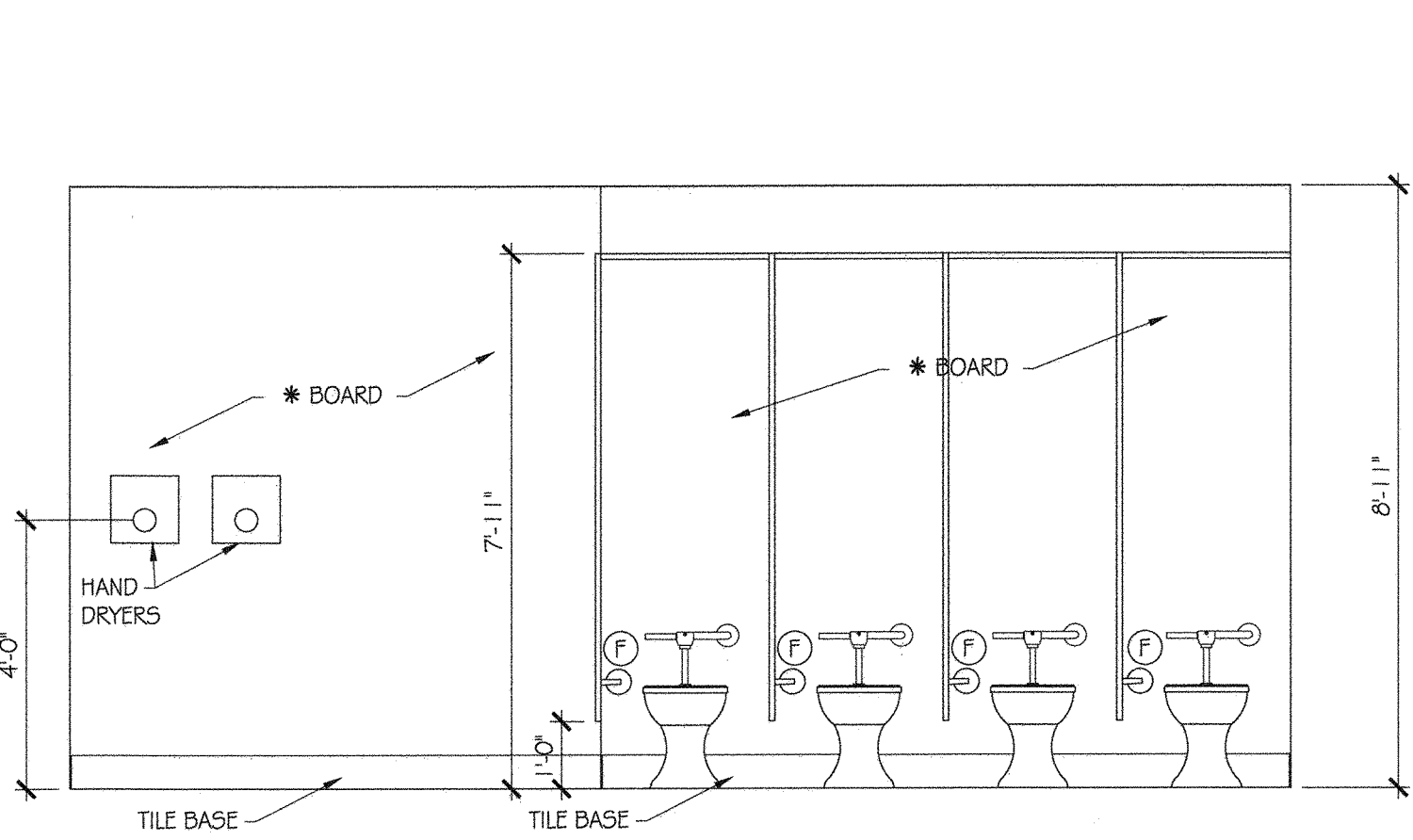
**F** ELEVATION  
A-3  
3/8" = 1'-0"



**G** ELEVATION  
A-3  
3/8" = 1'-0"



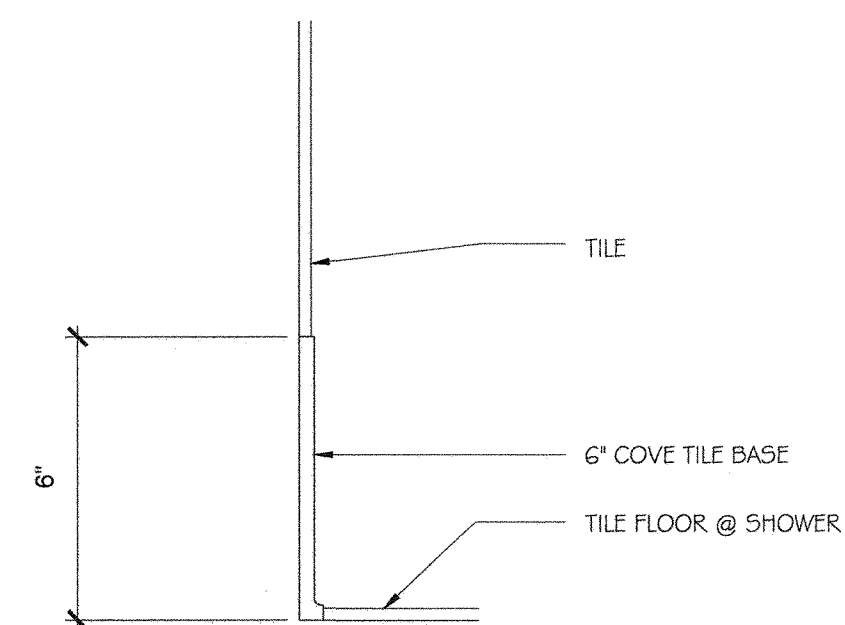
**H** ELEVATION  
A-3  
3/8" = 1'-0"



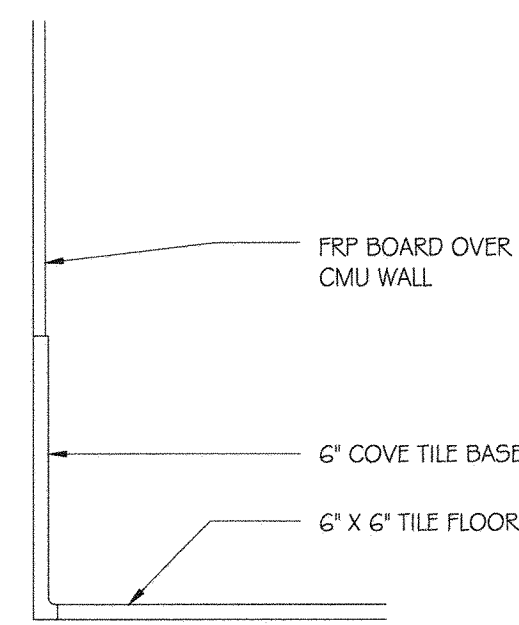
**I** ELEVATION  
A-3  
3/8" = 1'-0"

GENERAL NOTE:

- OVERHEAD BRACED, FLOOR MOUNTED TOILET AND SHOWER PARTITIONS
- BRADLEY, OR GLOBE, POLYMER SOLID PLASTIC PARTITIONS, DOOR HARDWARE, AND PARTS STAINLESS STEEL

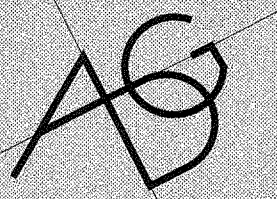


**1** DETAIL @ SHOWERS  
A-3  
3" = 1'-0"



**2** DETAIL @ FLOOR BASE  
A-3  
3" = 1'-0"

REVISIONS



A DESIGN GROUP, LLC  
ART-ARCHITECTURE-ENGINEERING  
2787 HILL ROAD  
VIENNA, VA 22181  
FRANK V. STURGEON, AIA  
703.939.5226  
FRANK@ADG10.COM

POHICK BAY BATH HOUSE  
ADA RENOVATIONS  
POHICK BAY REGIONAL PARK  
6501 POHICK BAY DRIVE  
LORTON, VA 22079  
NORTHERN, VA

PROJECT PHASE:

PERMIT SET

DATE:

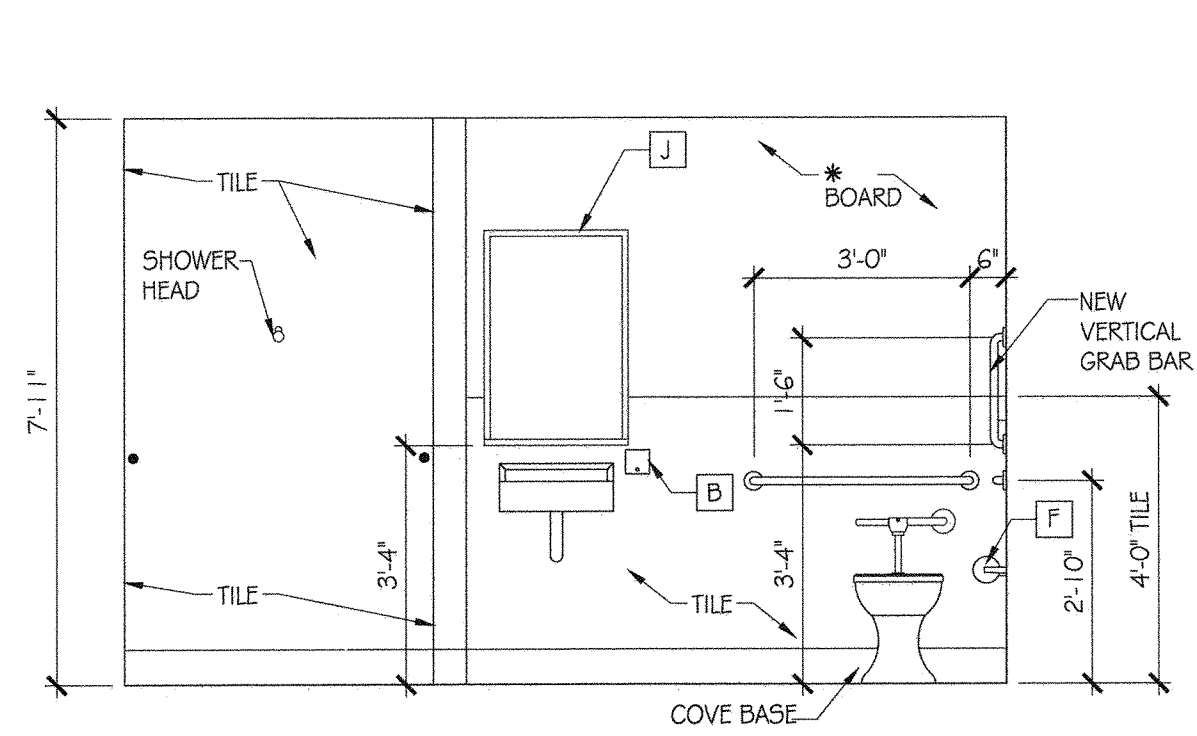
1-10-2021



SHEET No.

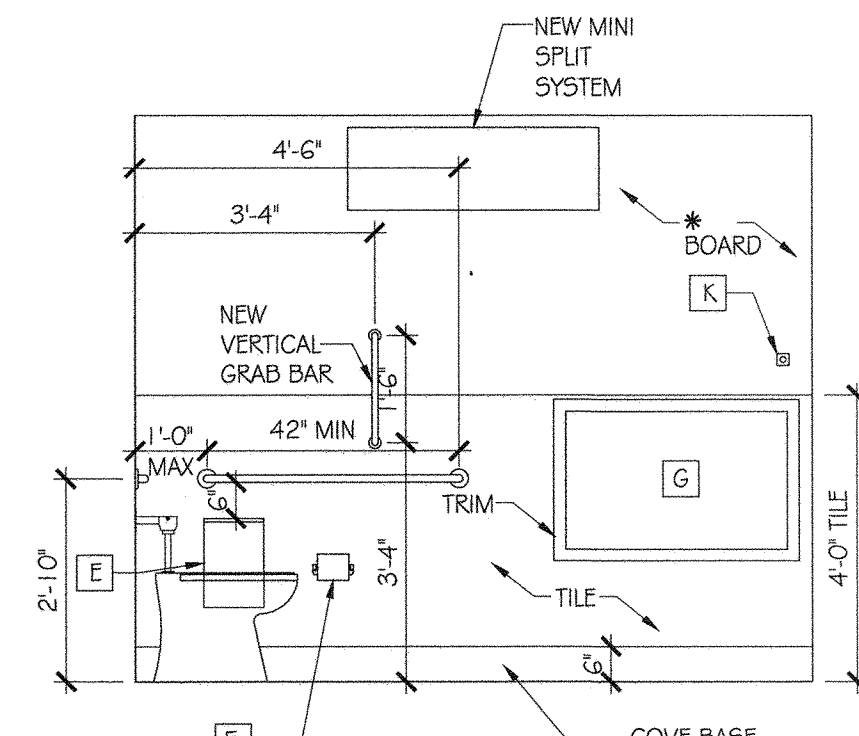
A-3

THE PLANS, IDEAS, ARRANGEMENTS, AND DESIGNS INDICATED OR REPRESENTED BY THIS DRAWING (S) ARE OWNED BY, AND ARE THE PROPERTY OF FRANK V. STURGEON, ARCHITECT, AND ARE INTENDED ONLY IN CONNECTION WITH THIS SPECIFIC PROJECT. THESE DRAWINGS SHALL NOT BE USED, IN WHOLE OR IN PART FOR ANY OTHER PURPOSE FOR WHICH THEY WERE NOT ORIGINALLY INTENDED WITHOUT WRITTEN PERMISSION FROM FRANK V. STURGEON, AIA ARCHITECT. © 2020 FRANK V. STURGEON, AIA ARCHITECT EXPRESSLY RESERVES HIS COMMON LAW COPYRIGHT AND OTHER PROPERTY RIGHTS IN THESE PLANS, SPECIFICATIONS, AND IDEAS. THESE DOCUMENTS ARE NOT TO BE REPRODUCED, CHANGED, OR COPIED (ELECTRONICALLY OR MANUALLY) IN ANY FORM OR MANNER WHATSOEVER NOR ARE THEY TO BE ASSIGNED TO ANY THIRD PARTY WITH OUT OBTAINING WRITTEN PERMISSION OR CONSENT FROM FRANK V. STURGEON, AIA ARCHITECT. © 2020



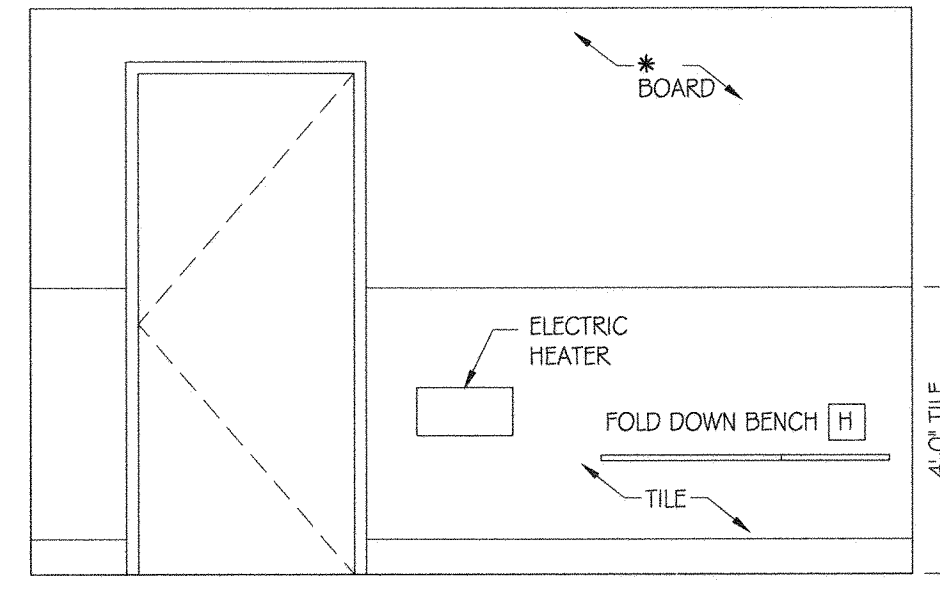
J ELEVATION  
A-4

3/8" = 1'-0"



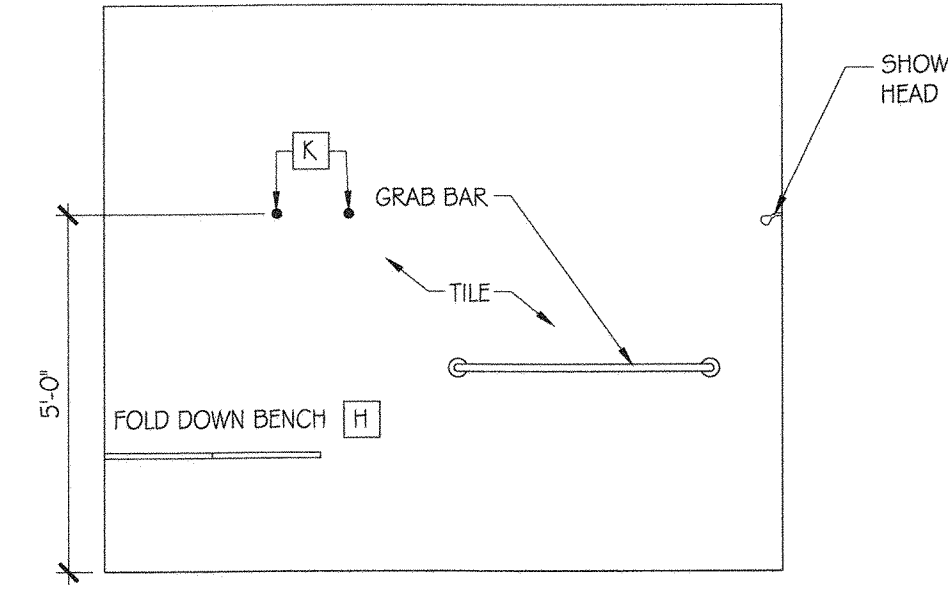
K ELEVATION  
A-4

3/8" = 1'-0"



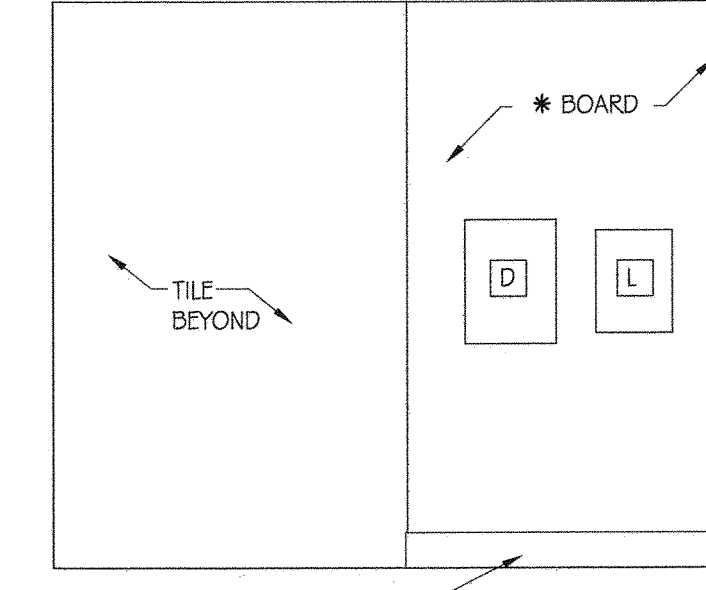
L ELEVATION  
A-4

3/8" = 1'-0"



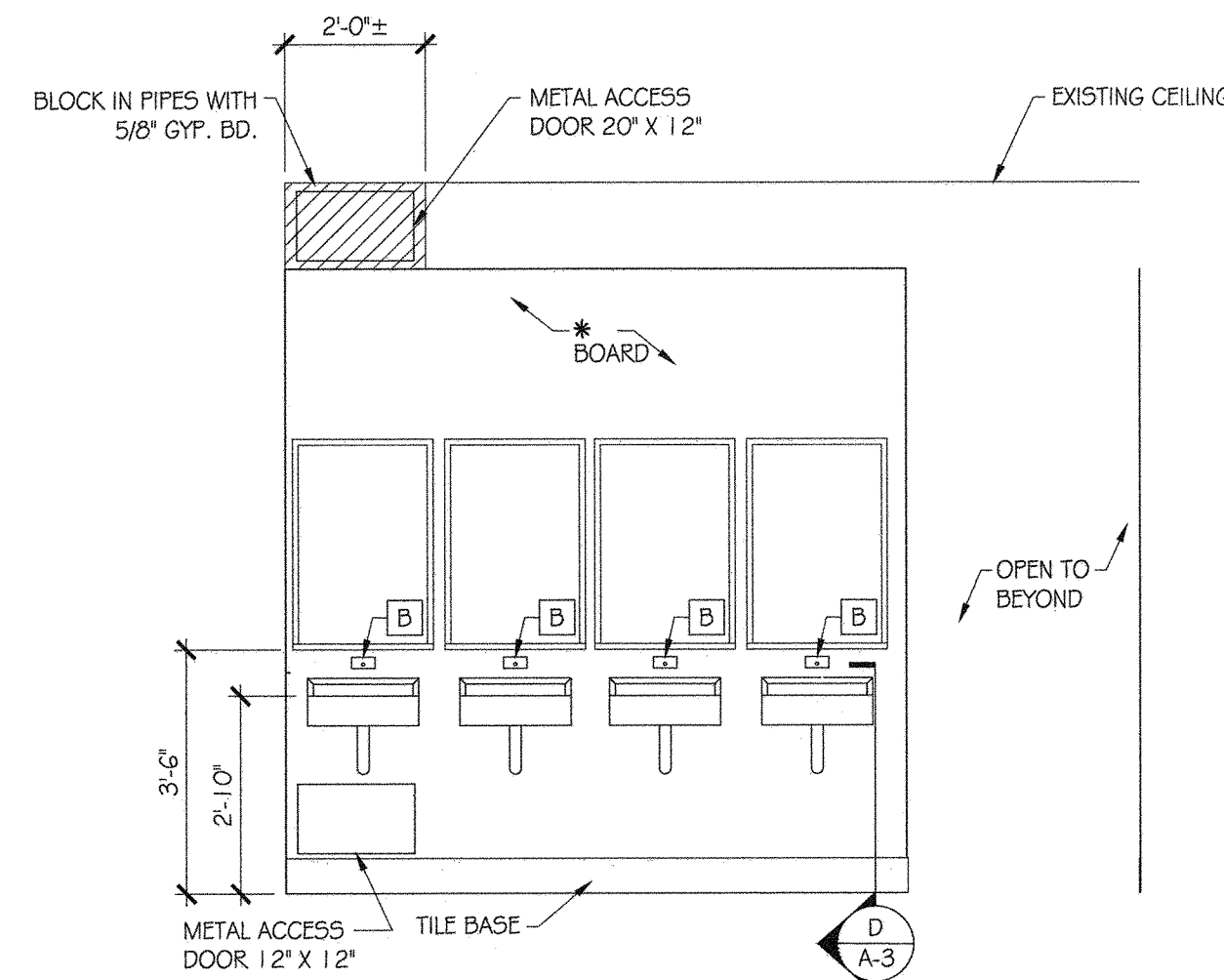
M ELEVATION  
A-4

3/8" = 1'-0"



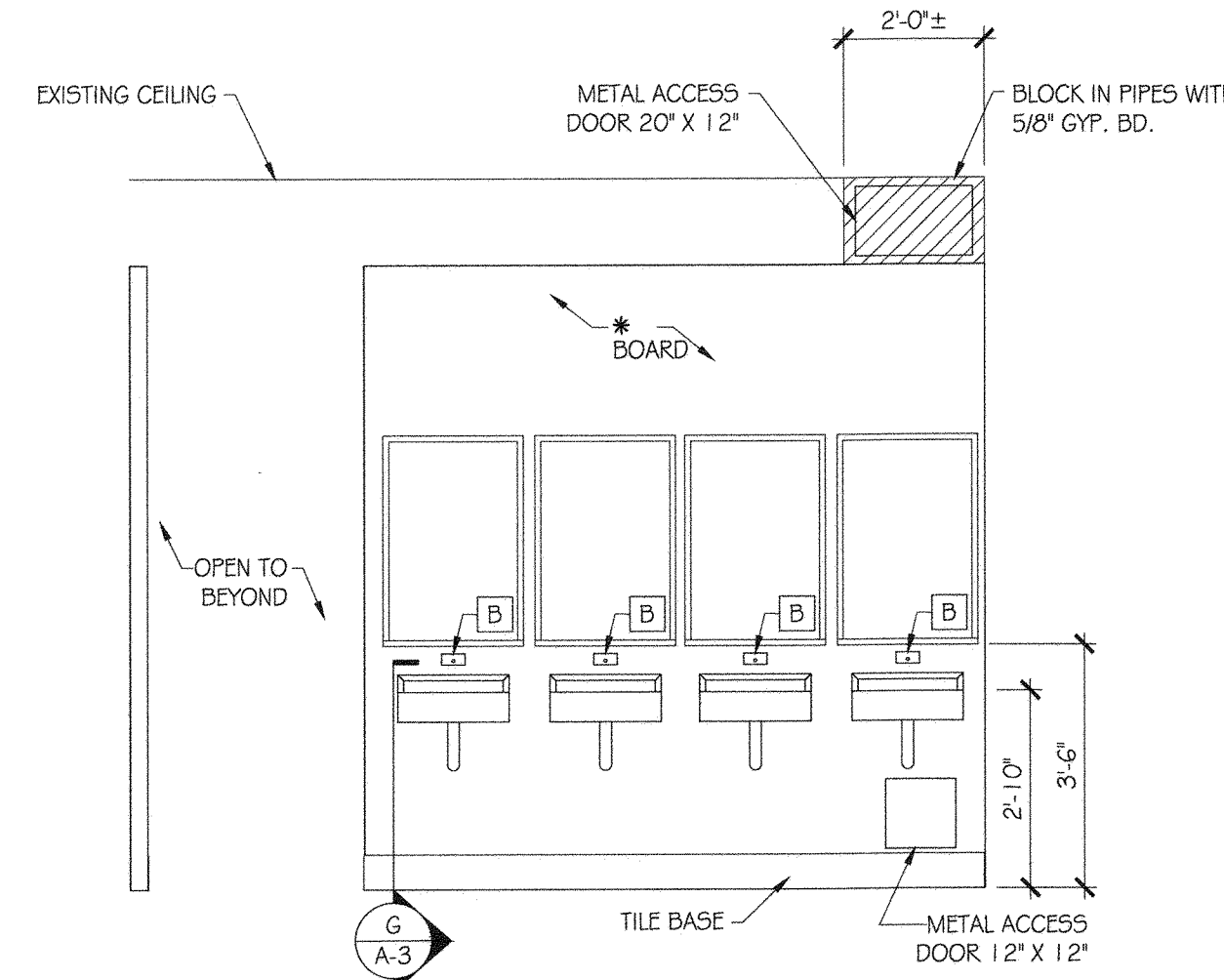
O ELEVATION  
A-4

3/8" = 1'-0"



E MEN'S ROOM  
A-4

3/8" = 1'-0"



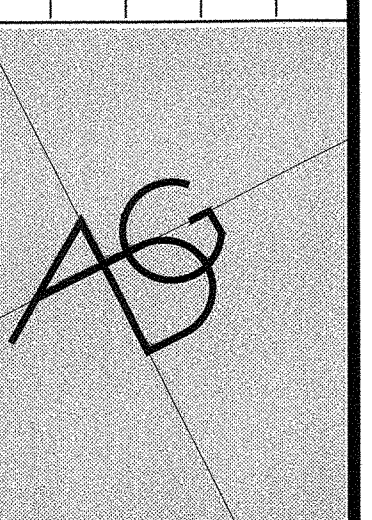
N WOMEN'S PLAN  
A-4

3/8" = 1'-0"

TOILET ACCESSORIES & EQUIPMENT LIST	BOBRICK #	
A - NOT USED		
B - SOAP DISPENSER	OFCI	
C - PAPER TOWEL DISPENSER	OFCI	
D - PAPER TOWEL DISPOSAL (SEMI RECESS)		B 3944
E - SANITARY NAPKIN DISPENSER		B270
F - TOILET PAPER DISPENSER	OFCI	
G - FOLDING BABY CHANGING TABLE		"KOALA" CREAM KB100-OOST RECESSED INTO WALL
H - FOLDING BENCH		"HARNEY" OR EQUAL #19070
J - MIRROR W/ SHELF 24"x36"		B-292
K - ROBE HOOK		B-542
L - ELECTRIC HAND DRYER	OFCI	VERD-DRI #Q979A (WHITE) [110 - 120V]
M - DRYER	OFCI	SPEED QUEEN #55ENC
N - WASHER	OFCI	SPEED QUEEN #5FNNCASP
O - STACKED WASHER/DRYER	OFCI	SPEED QUEEN #55T

NOTE:  
OFCI = OWNER FURNISHED CONTRACTOR INSTALLED

REVISIONS



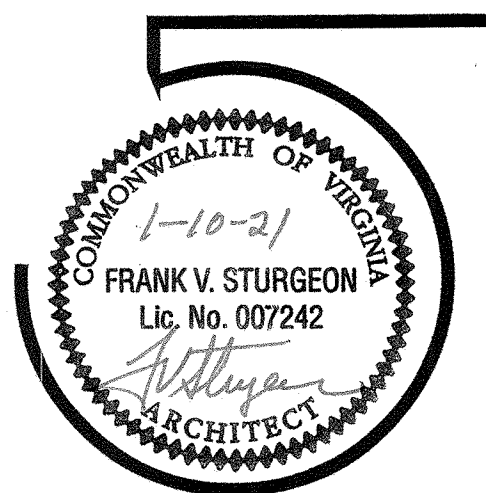
A DESIGN GROUP, LLC  
ART-ARCHITECTURE-ENGINEERING  
2787 HILL ROAD  
VIENNA, VA 22181  
FRANK V. STURGEON, AIA  
703.938.5226  
FRANK@ADG10.COM

POHICK BAY BATH HOUSE  
ADA RENOVATIONS  
POHICK BAY REGIONAL PARK  
6501 POHICK BAY DRIVE  
LORTON, VA 22079  
NORTHERN, VA

PROJECT PHASE:

PERMIT SET

DATE:  
1-10-2021



SHEET No.

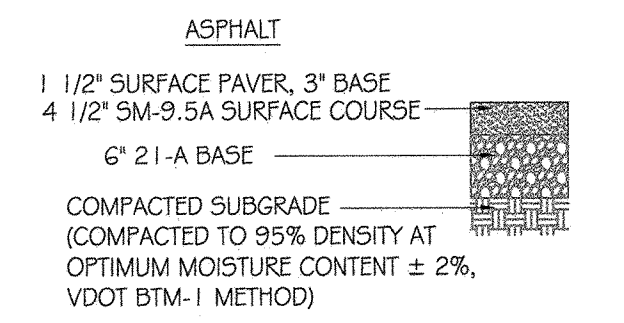
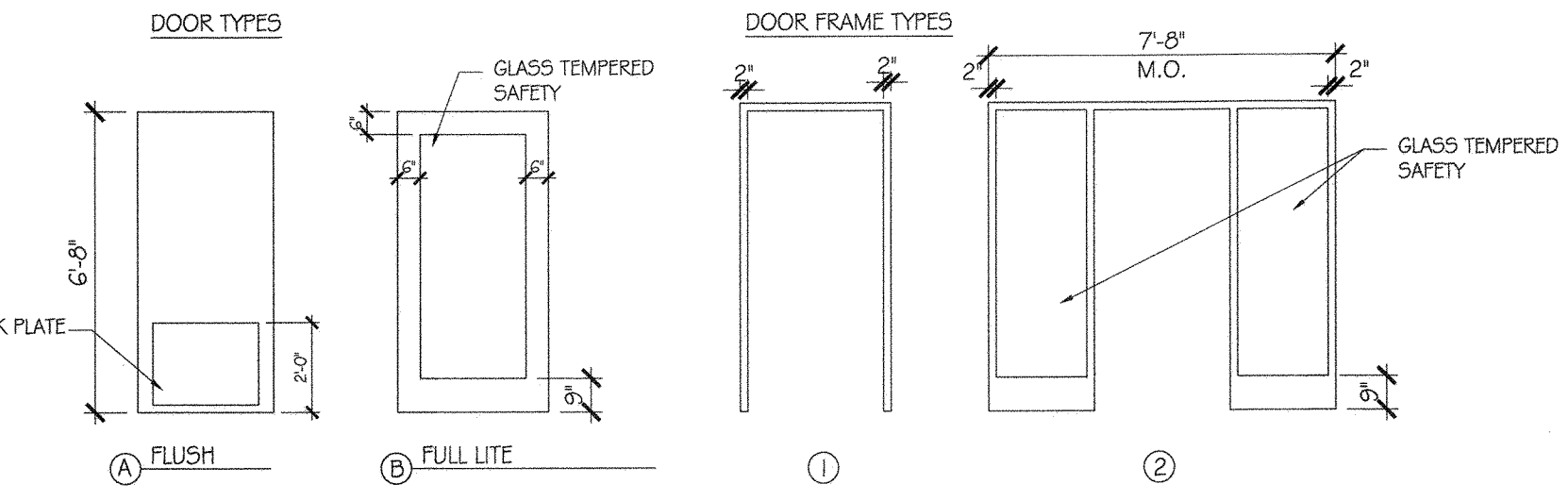
A-4



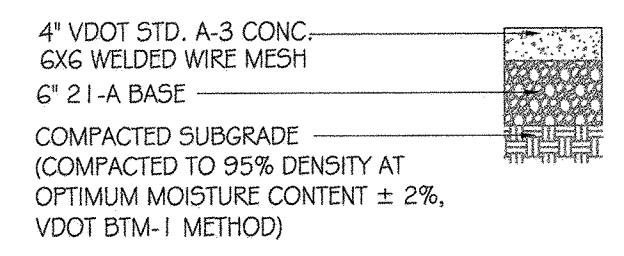
### DOOR AND FRAME SCHEDULE

DR #	SIZE			DOOR				LOCKSET	FRAME		FIRE RATING	NOTES
	WIDTH	HGT	THK	MATL	HINGES	TYPE	THRES		MATL	DETAIL		
1	3'-0"	6'-8"	1 3/4"	HM	1 1/2" PAIR	A	METAL	PRIVACY	HM	1	-	W/ CLOSURE AND ADA ELECTRONIC OPENER
2	NOT USED											NOT USED
3	3'-0"	6'-8"	1 3/4"	HM	1 1/2" PAIR	A	METAL	CLASS ROOM	HM	1	-	W/ CLOSURE
4	3'-0"	6'-8"	1 3/4"	HM	1 1/2" PAIR	B	METAL	CLASS ROOM	HM	2	-	W/ SIDE LITES
5	3'-0"	6'-8"	1 3/4"	HM	1 1/2" PAIR	A	METAL	CLASS ROOM	HM	1	-	W/ CLOSURE
6	ACCESS DOORS IN CMU											
7	ACCESS DOORS IN CMU											
E1	EXISTING											
E2	EXISTING											

- DOOR NOTES (TYPICAL)**
- ALUMINUM THRESHOLD - ZERO
  - WEATHER STRIPPING - ZERO
  - CLOSURE
  - DOOR SILENCERS
  - KEY LOCKSET - "SARGENT"
  - KEYING - REFER TO OWNER
- NOTE: NO THRU BOLTS FOR CLOSURE



**4 ONSITE PAVEMENT SECTION**  
A-5 NOT TO SCALE

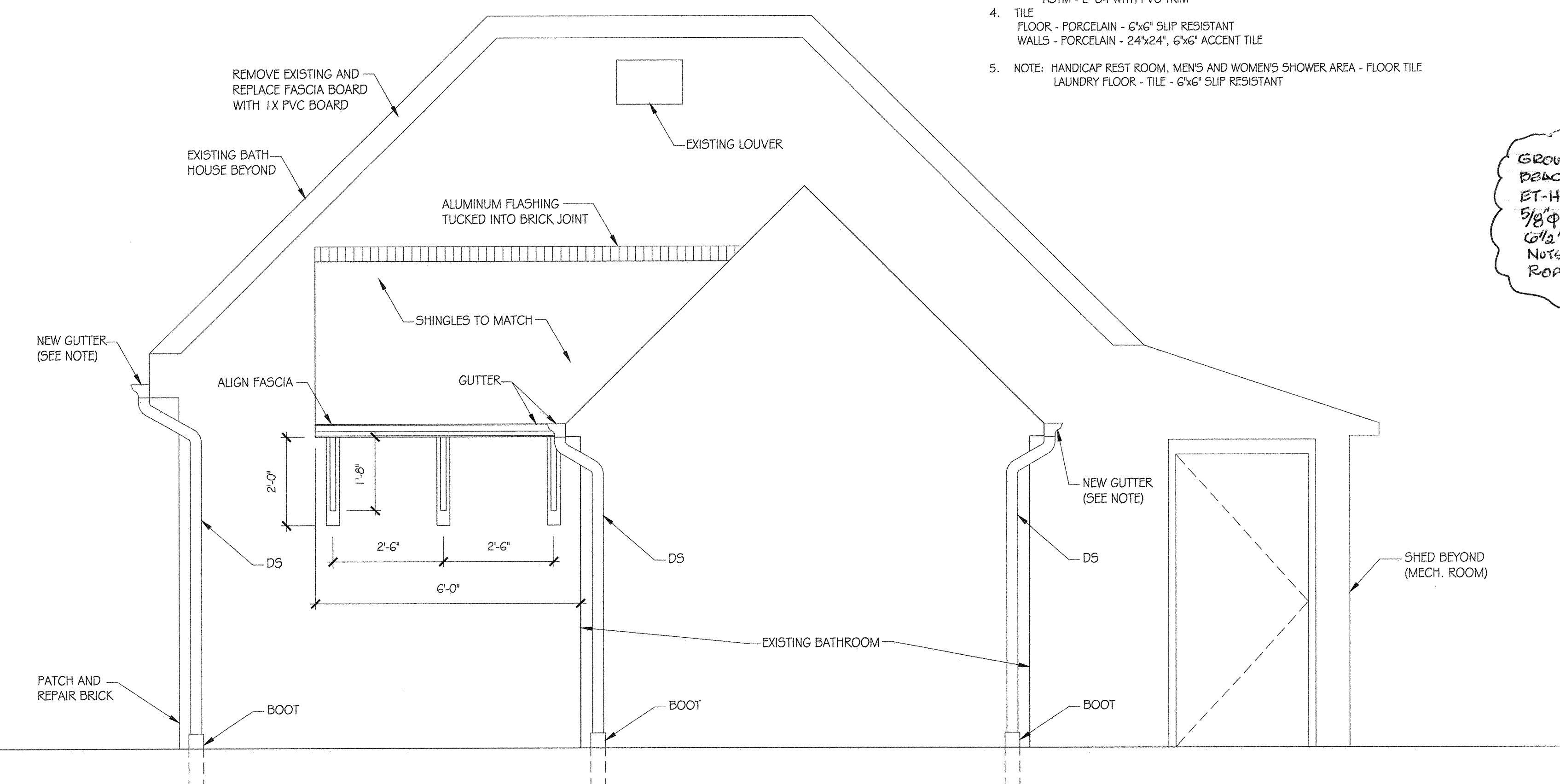


**5 ONSITE SIDEWALK DETAIL**  
A-5 NOT TO SCALE (WIDTH AS SHOWN ON PLAN)

### ROOM FINISH SCHEDULE

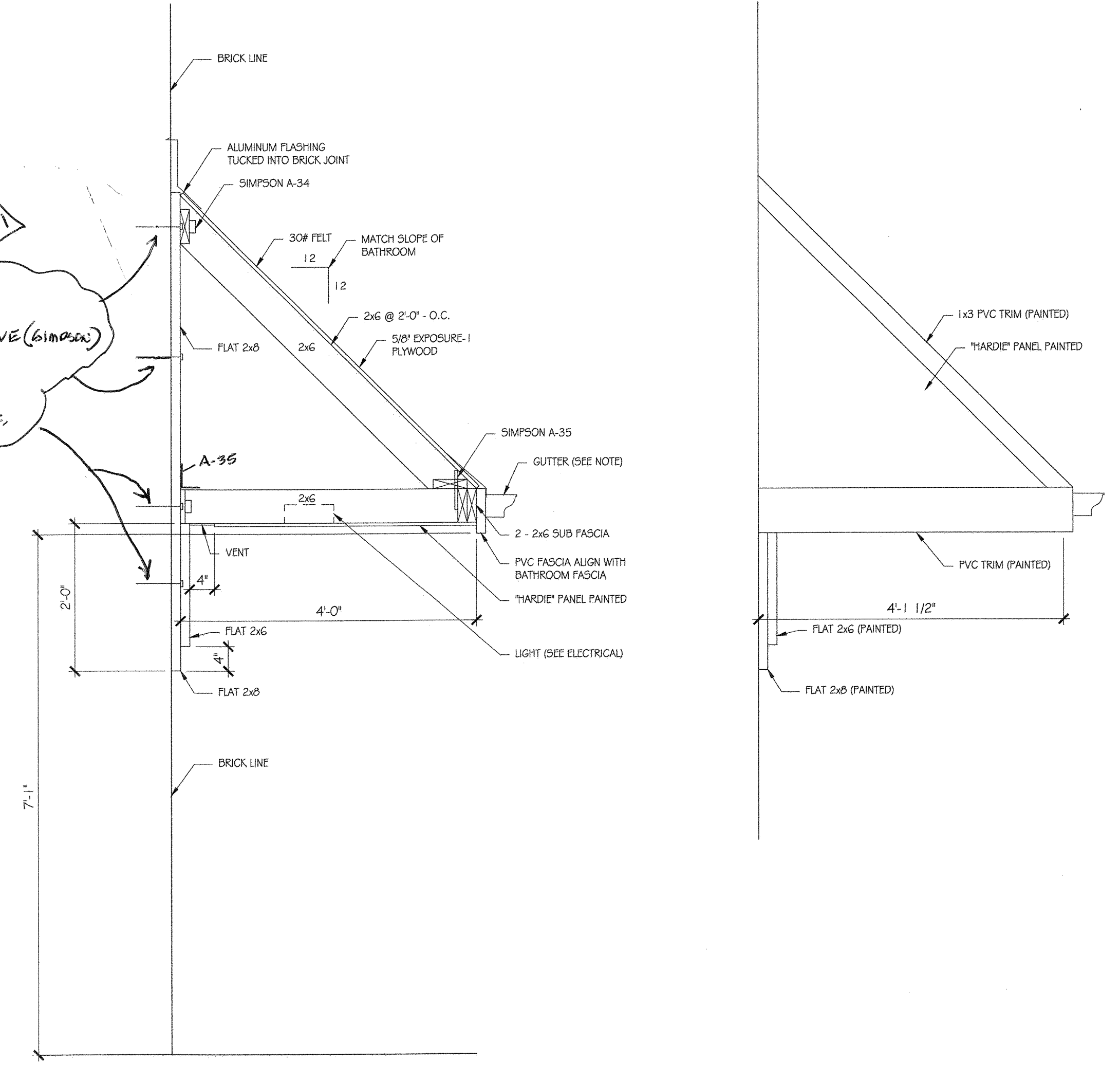
ROOM NAME	FLOOR	BASE	WALLS				CEILING	REMARKS
			NORTH	EAST	SOUTH	WEST		
HANDICAP RESTROOM/SHOWER	TILE	TILE	*	*	*	*	PLYWOOD, PAINTED	SHOWER-WALL - TILE
WOMEN'S ROOM	TILE	TILE					5/8" GYP. BD. PAINTED	SHOWER-WALL - TILE
LAUNDRY	TILE	COVE TILE					5/8" GYP. BD. PAINTED	
MEN'S ROOM	TILE	-					5/8" GYP. BD. PAINTED	SHOWER-WALL - TILE
MECH SPACE	CONC	-	-	-	-	-	N.I.C.	N.I.C.

- NOTES:**
- "GREEN" - WATER RESISTANT GYP. BD.
  - INSULATION:
    - IN WOOD STUD WALLS R-21 (BATT)
    - IN ATTIC - R-38 ON CEILING (BATT)
  - \* WALL FINISH:
    - "ALTO" WALL CLADDING (WHITE ROCK MAT) COLOR: ALMOND 10 / 3.0M [FT32] LRV - 70
    - FRO BOARD, CLASS A, PEBBLED-BEIGE 48"x 20"x 0.09" THICK, ASTM - E 84 WITH PVC TRIM
  - TILE
    - FLOOR - PORCELAIN - 6"x6" SLIP RESISTANT
    - WALLS - PORCELAIN - 24"x24", 6"x6" ACCENT TILE
  - NOTE: HANDICAP REST ROOM, MENS AND WOMEN'S SHOWER AREA - FLOOR TILE LAUNDRY FLOOR - TILE - 6"x6" SLIP RESISTANT



**1 SHED ROOF ELEVATION**  
A-5 1/2" = 1'-0"  
NOTE - NEW GUTTER - "GUTTER-HELMET" OR "LEAF-FILTER"

GROUT CMU CELLS AT BRACKETS.  
ET-HP EPOXY ADHESIVE (SIMPSON)  
5/8" THEROED ROFS  
1/2" MIN. EMBEDMENT  
NOTES & WASHER.  
ROFS SPACED 24" O.C.



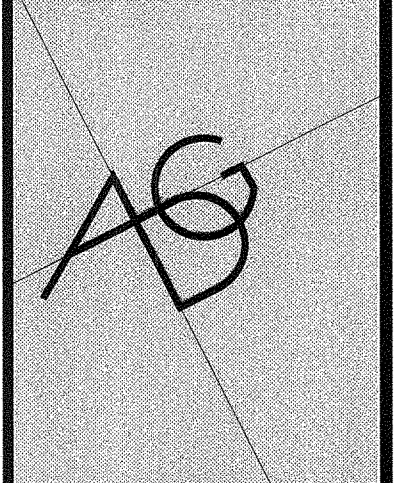
**2 SECTION**  
A-5 3/8" = 1'-0"

**3 SECTION - END VIEW**  
A-5 3/8" = 1'-0"

NOTE: ALL-ROOF FRAMING LUMBER SPF-TREATED

THE PLANS, IDEAS, ARRANGEMENTS, AND DESIGNS INDICATED OR REPRESENTED BY THIS DRAWING (S) ARE OWNED BY, AND ARE THE PROPERTY OF FRANK V. STURGEON, ARCHITECT, AND ARE INTENDED ONLY IN CONNECTION WITH THIS SPECIFIC PROJECT. THESE DRAWINGS SHALL NOT BE USED, IN WHOLE OR IN PART FOR ANY OTHER PURPOSE FOR WHICH THEY WERE NOT ORIGINALLY INTENDED WITHOUT WRITTEN PERMISSION FROM FRANK V. STURGEON, AIA ARCHITECT. © 2020 FRANK V. STURGEON, AIA ARCHITECT EXPRESSLY RESERVES HIS COMMON LAW COPYRIGHT AND OTHER PROPERTY RIGHTS IN THESE PLANS, SPECIFICATIONS, AND IDEAS. THESE DOCUMENTS ARE NOT TO BE REPRODUCED, CHANGED, OR COPIED (ELECTRONICALLY OR MANUALLY) IN ANY FORM OR MANNER WHATSOEVER NOR ARE THEY TO BE ASSIGNED TO ANY THIRD PARTY WITH OUT OBTAINING WRITTEN PERMISSION OR CONSENT FROM FRANK V. STURGEON, AIA ARCHITECT. © 2020

NO.	REVISIONS	DATE
1	REVISIONS	9-9-2021

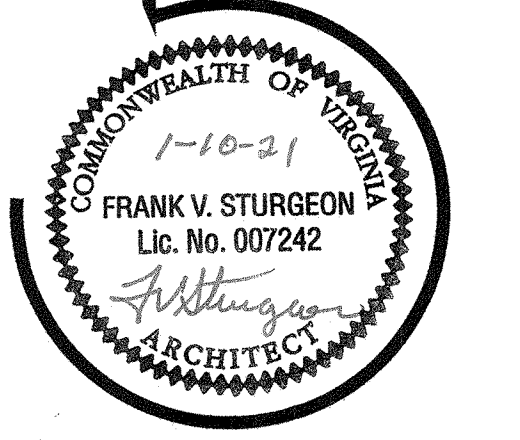


A DESIGN GROUP, LLC  
ART-ARCHITECTURE-ENGINEERING  
2787 HILL ROAD  
VIENNA, VA 22181  
FRANK V. STURGEON, AIA  
703.938.5226  
FRANK@ADG10.COM

POHICK BAY BATH HOUSE  
ADA RENOVATIONS  
POHICK BAY REGIONAL PARK  
6501 POHICK BAY DRIVE  
LORTON, VA 22079  
NORTHERN, VA

PROJECT PHASE:  
PERMIT SET

DATE:  
1-10-2021



SHEET No.  
**A-5**



THE PLANS, IDEAS, ARRANGEMENTS, AND DESIGNS INDICATED OR REPRESENTED BY THIS DRAWING (S) ARE OWNED BY, AND ARE THE PROPERTY OF FRANK V. STURGEON, ARCHITECT, AND ARE INTENDED ONLY IN CONNECTION WITH THIS SPECIFIC PROJECT. THESE DRAWINGS SHALL NOT BE USED, IN WHOLE OR IN PART FOR ANY OTHER PURPOSE, FOR WHICH THEY WERE NOT ORIGINALLY INTENDED WITHOUT WRITTEN PERMISSION FROM FRANK V. STURGEON, AN ARCHITECT. © 2019 FRANK V. STURGEON, AN ARCHITECT EXPRESSLY RESERVES HIS COMMON LAW COPYRIGHT AND OTHER PROPERTY RIGHTS IN THESE PLANS, SPECIFICATIONS, AND IDEAS. THESE DOCUMENTS ARE NOT TO BE REPRODUCED, CHANGED, OR COPIED (ELECTRONICALLY OR MANUALLY) IN ANY FORM OR MANNER WHATSOEVER NOW OR THEY TO BE ASSIGNED TO ANY THIRD PARTY WITH OUT OBTAINING WRITTEN PERMISSION OR CONSENT FROM FRANK V. STURGEON, AN ARCHITECT. © 2019

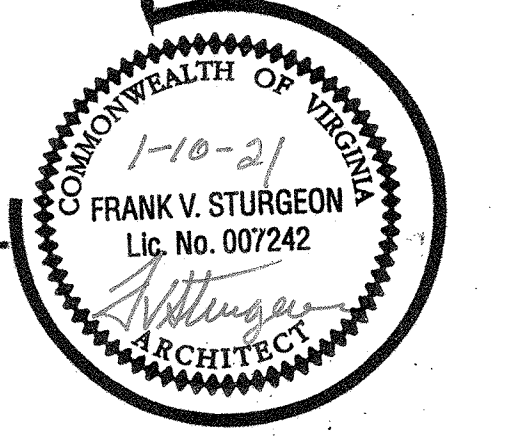
REVISIONS	
1	REVISIONS 3-9-2021

A DESIGN GROUP, LLC  
 ART-ARCHITECTURE-ENGINEERING  
 2707 HILL ROAD  
 VIENNA, VA 22181  
 FRANK V. STURGEON, AIA  
 703.938.5226  
 FRANK@ADG10.COM

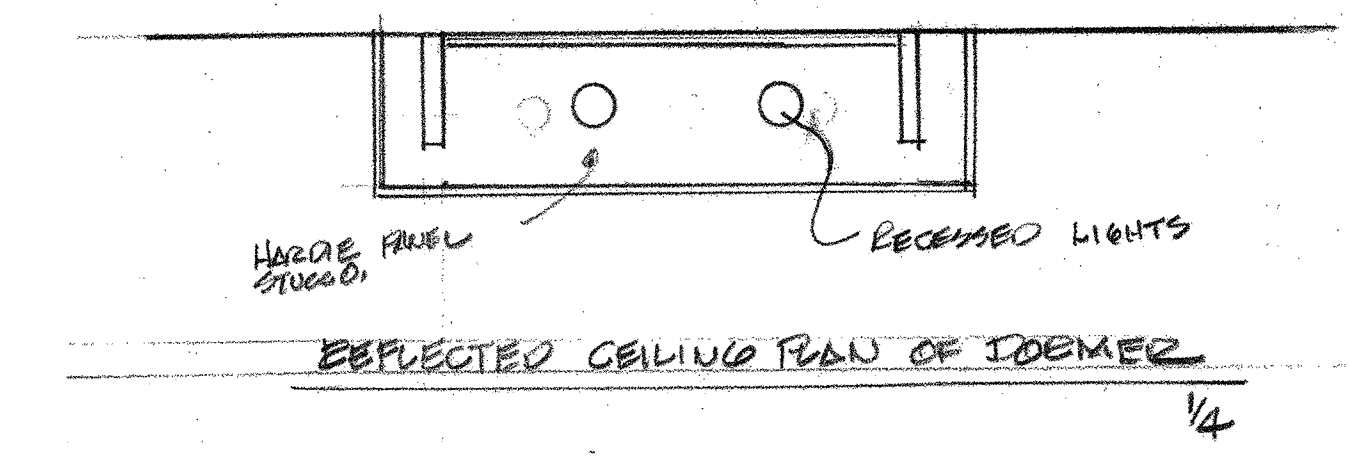
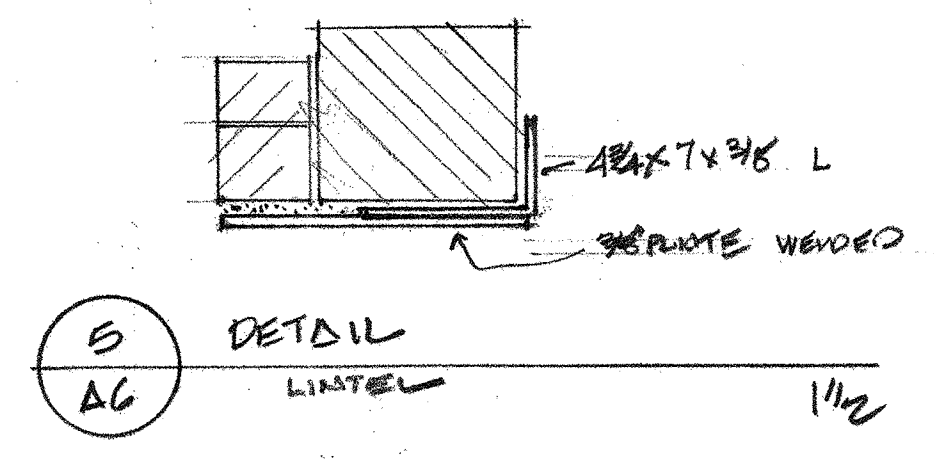
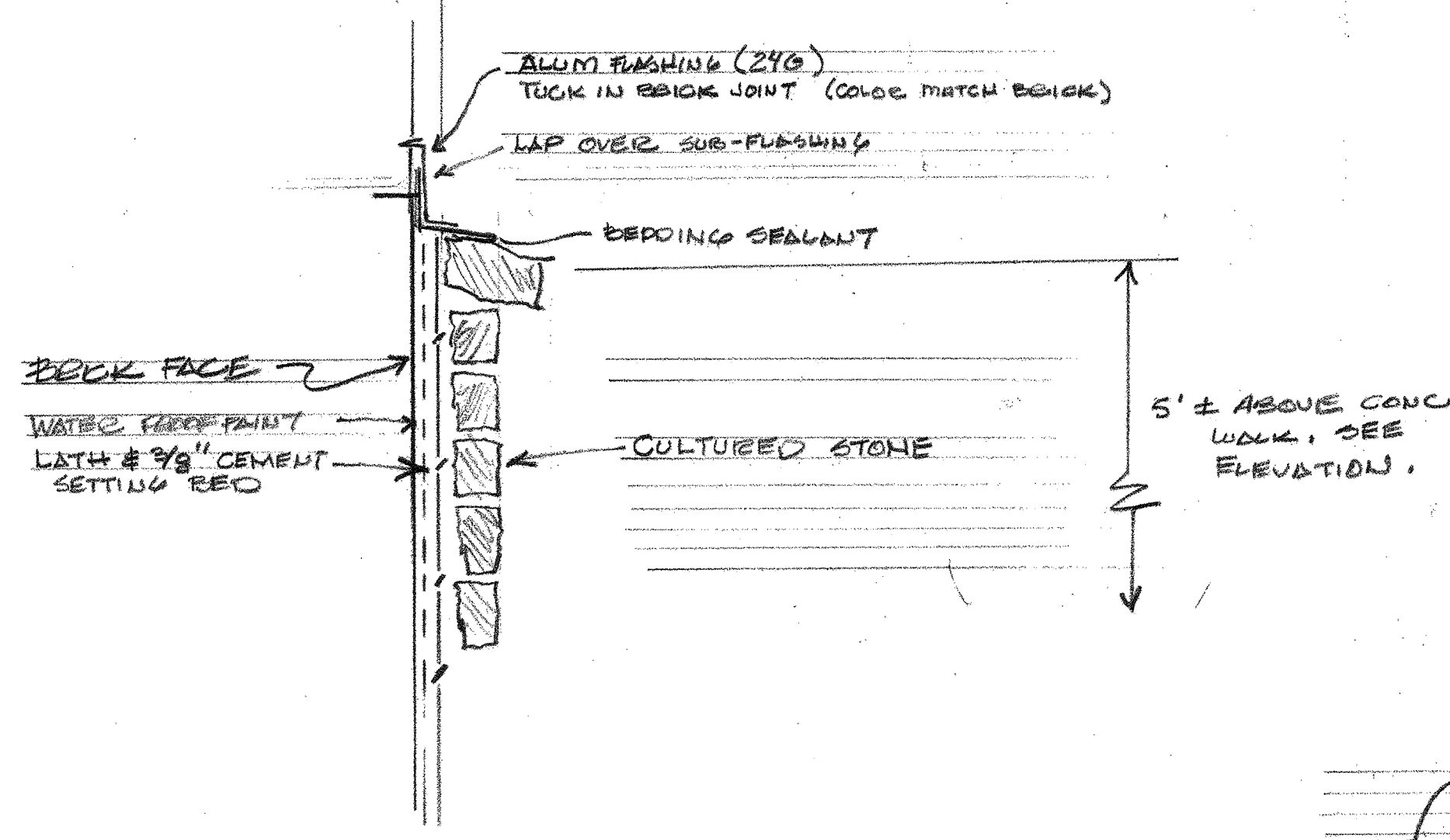
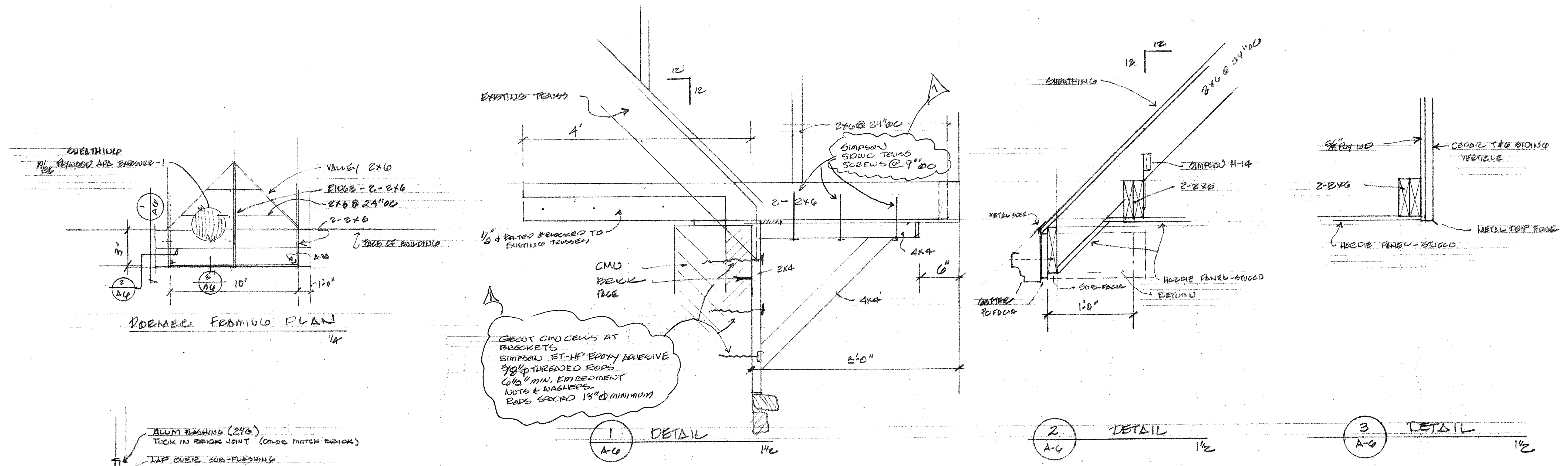
POHICK BAY PATH HOUSE  
 ADD RENOVATION  
 POHICK BAY BEGINAL PARK

PROJECT PHASE:  
 PERMIT SET

DATE:  
 1-10-2021



SHEET No.  
 AG



**A CULTURED STONE ON BACK FACE**  
 A-6

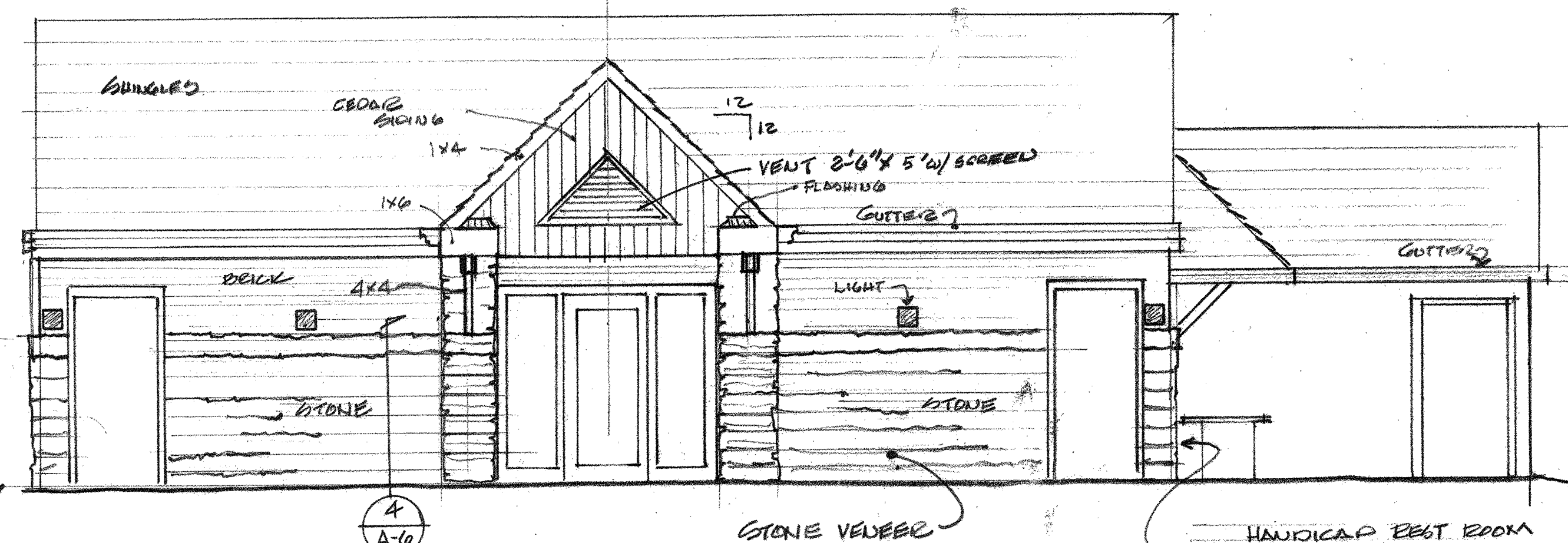
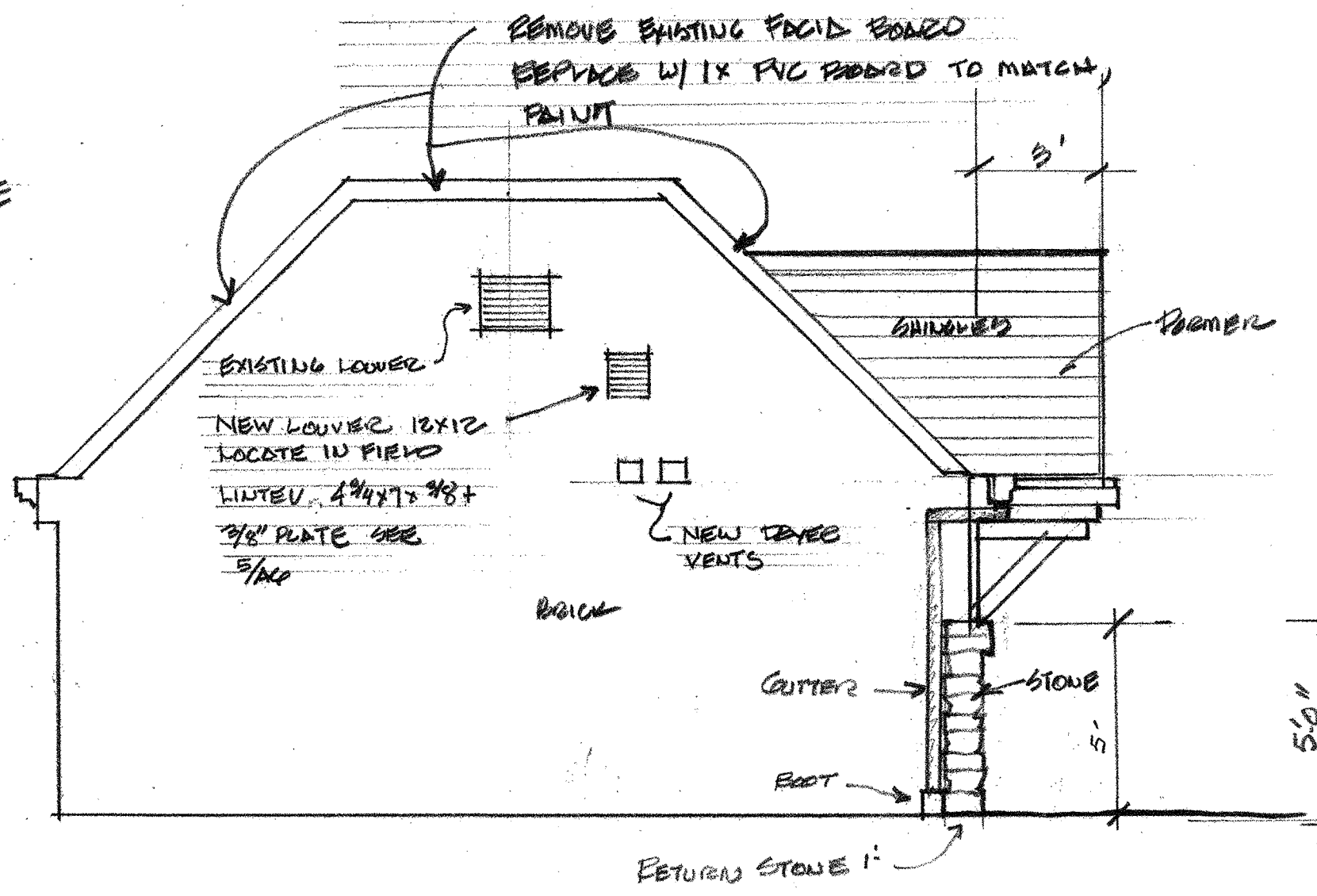
- CULTURED STONE APPLIED TO EXISTING BACK FACE.
- "OWENS CORNING", LUCK-STONE; OR EQUAL.
- SUBMIT SAMPLES FOR APPROVAL.

**ROOFING NOTES**

- "GAF" OR EQUAL - TIME-SERVE HDZ
- ROOF PROTECTION UNDER LAYMENT
- EDGE BARRIER 30" MIN. WIDE
- STAIR STEP SHINGLES

**DRAINAGE INFORMATION:**

- ADD DRAIN; ADD-ADVANCE DRAINAGE SYSTEM.
- NYLOPLAST 18"φ 770-938-2443



SIDE VIEW

FRONT VIEW

FRONT 4-NEW LIGHTS