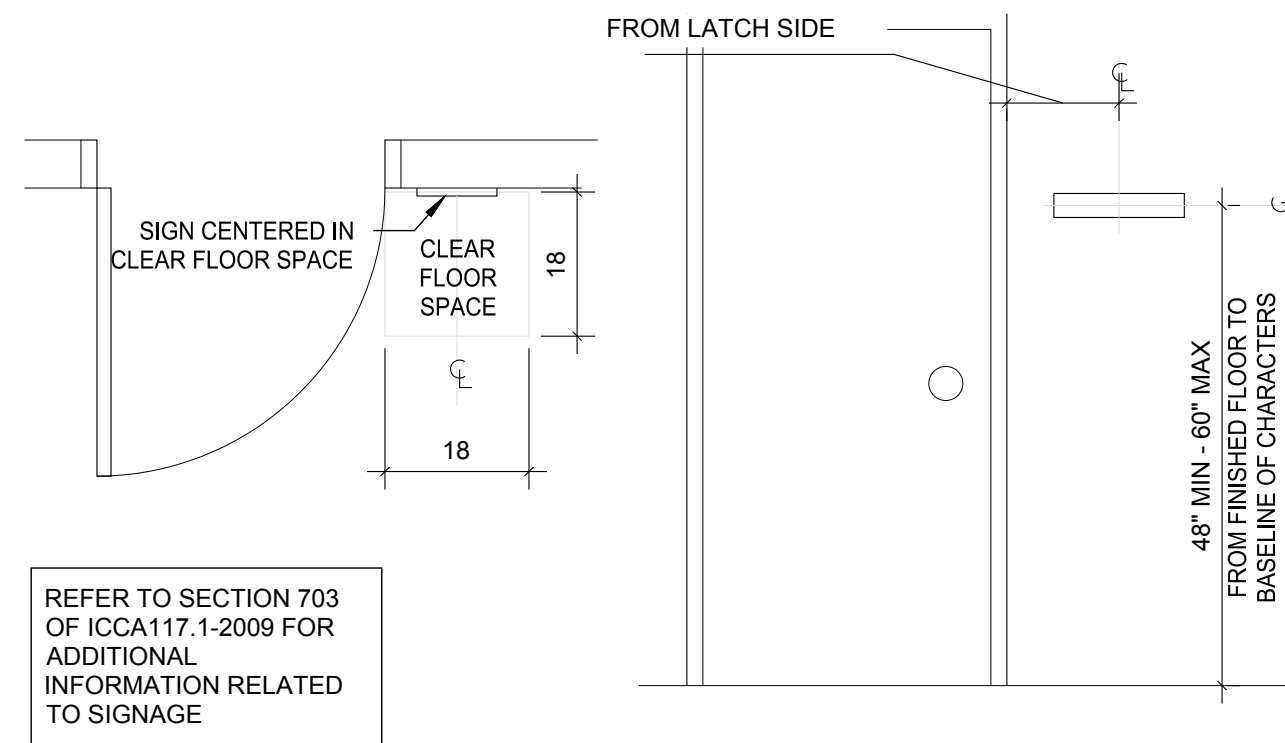
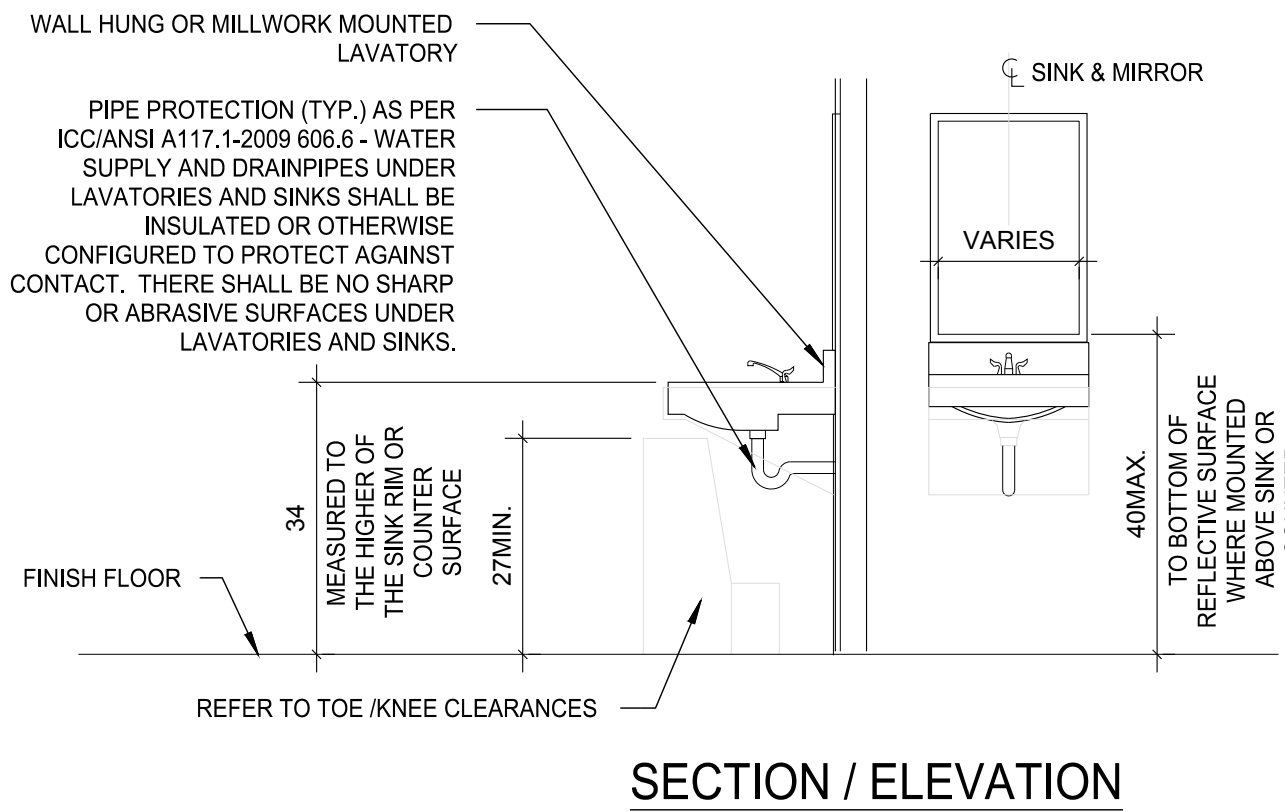
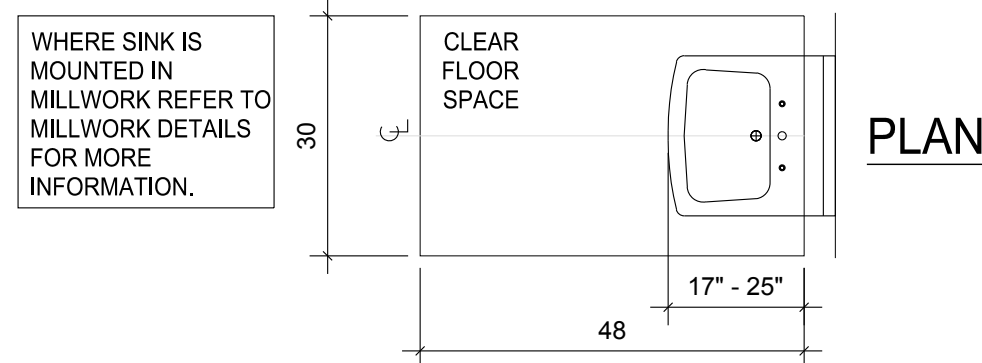


N.T.S.

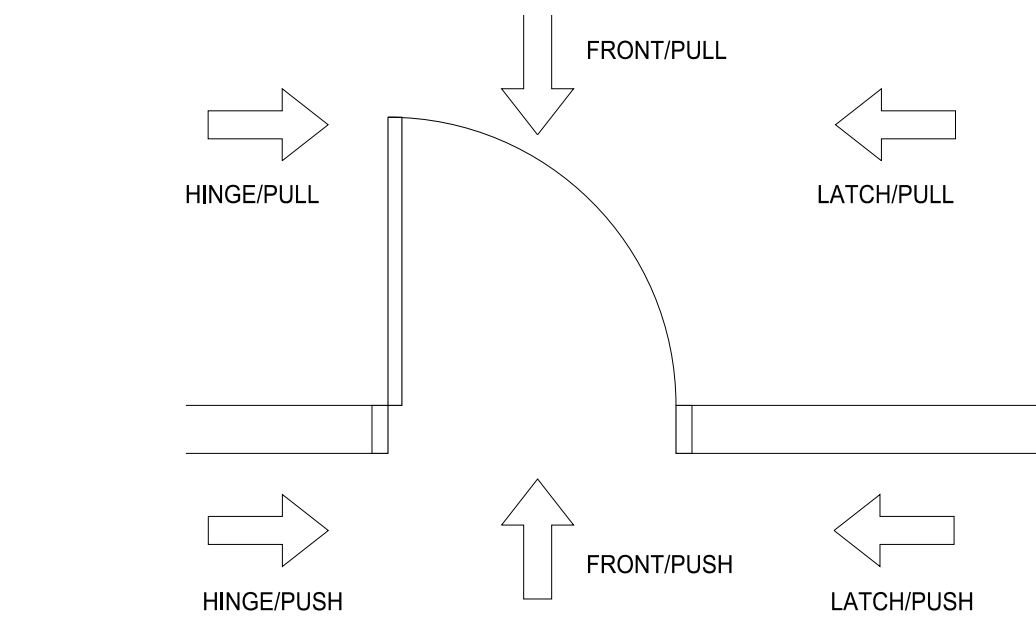
A GRAB BARS & HANDRAILS



1 TACTILE INTERIOR SIGN



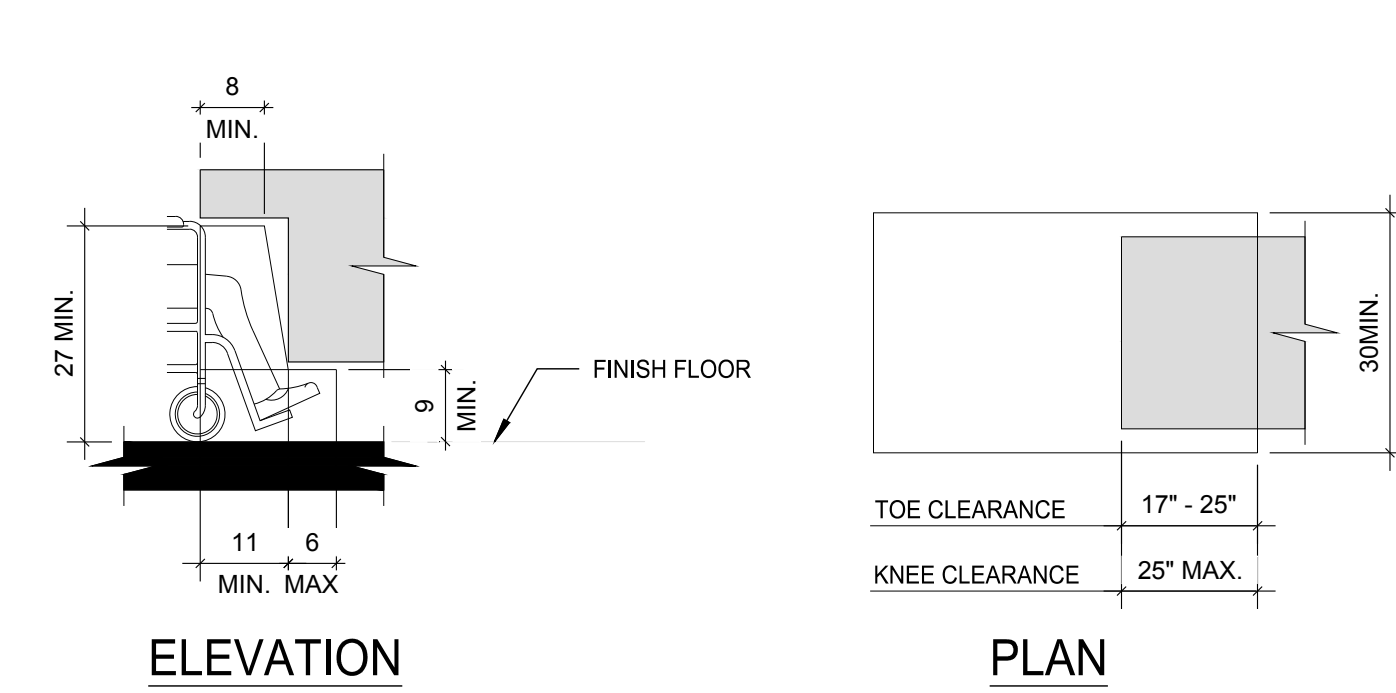
2 LAVATORIES AND SINKS



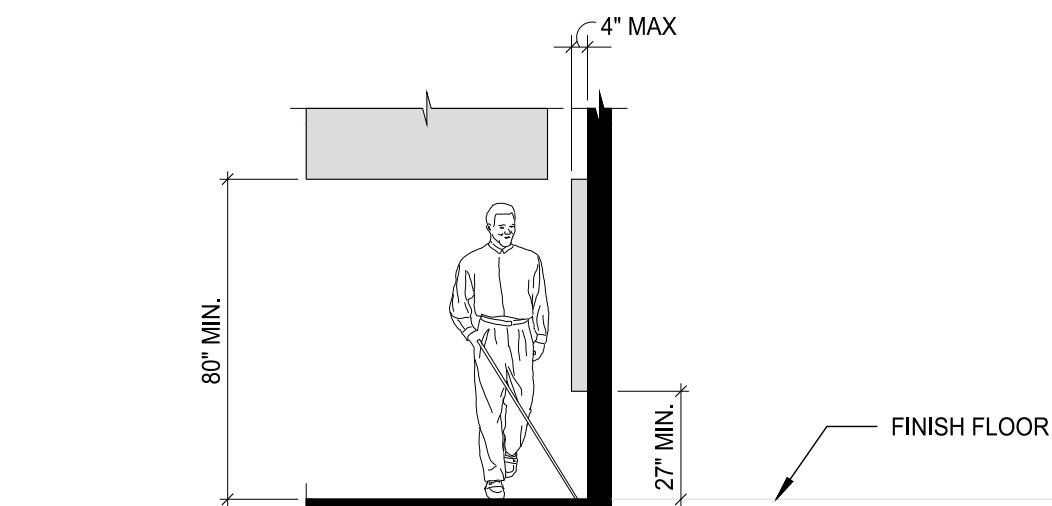
MANEUVERING CLEARANCES AT MANUAL SWINGING DOORS			
TYPE OF USE		MINIMUM MANEUVERING CLEARANCES	
APPROACH DIRECTION	DOOR SIDE	PERPENDICULAR TO DOORWAY	PARALLEL TO DOORWAY (BEYOND LATCH UNLESS NOTED)
FROM FRONT	PULL	60 INCHES	18 INCHES
FROM FRONT	PUSH	48 INCHES	0 INCHES (NOTE 3)
FROM HINGE SIDE	PULL	60 INCHES	36 INCHES
FROM HINGE SIDE	PUSH	54 INCHES	42 INCHES
FROM HINGE SIDE	PUSH	42 INCHES (NOTE 1)	22 INCHES (NOTE 3 & 4)
FROM LATCH SIDE	PULL	48 INCHES (NOTE 2)	24 INCHES
FROM LATCH SIDE	PUSH	42 INCHES (NOTE 2)	24 INCHES

- NOTES:
1. ADD 6" IF CLOSER AND LATCH PROVIDED.
 2. ADD 6" IF CLOSER PROVIDED.
 3. ADD 12" BEYOND LATCH IF CLOSER AND LATCH PROVIDED.
 4. BEYOND HINGE SIDE.

3 MANEUVERING CLEARANCES

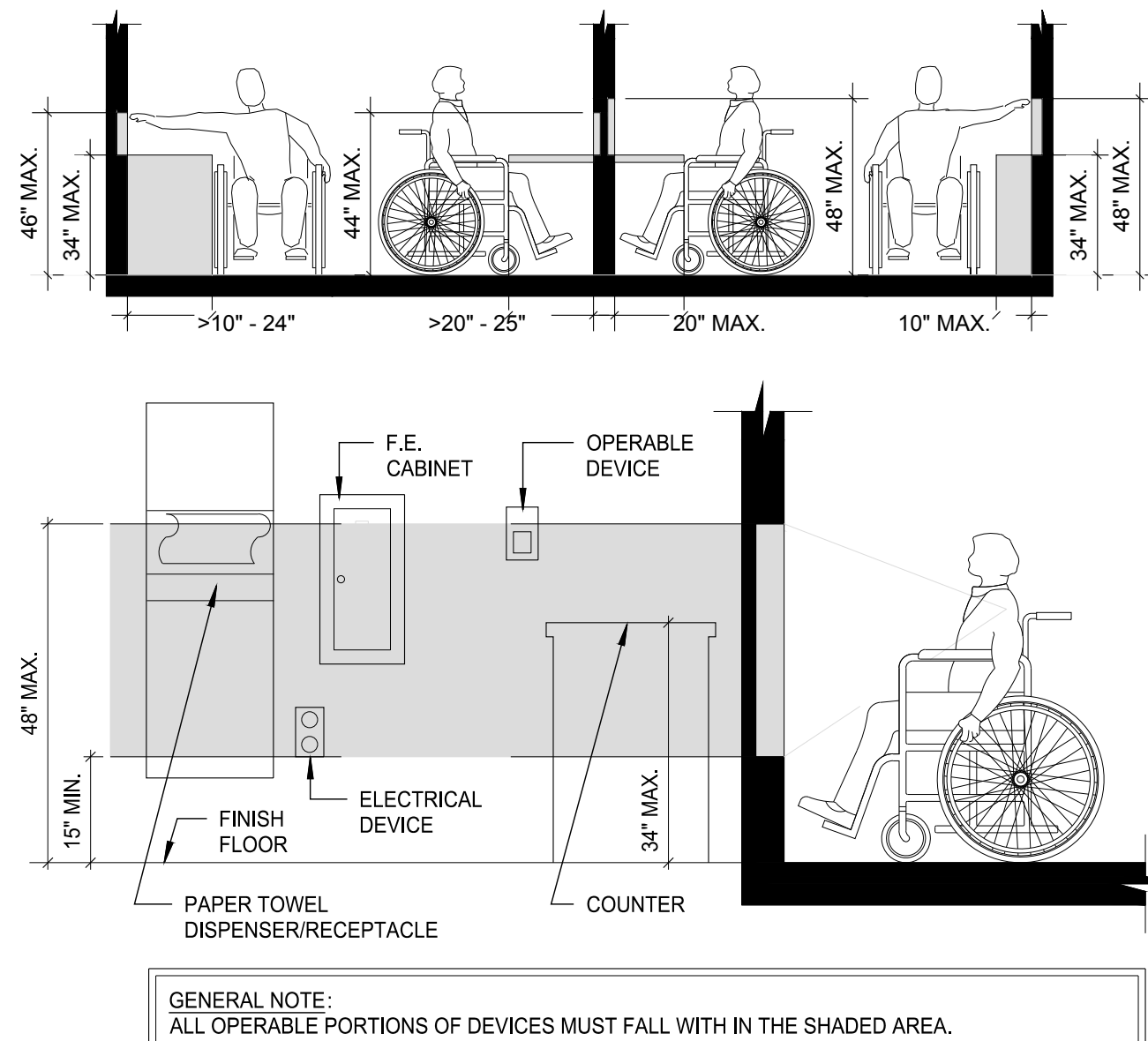


4 TOE / KNEE CLEARANCES



LIMITS OF PROTRUDING OBJECTS

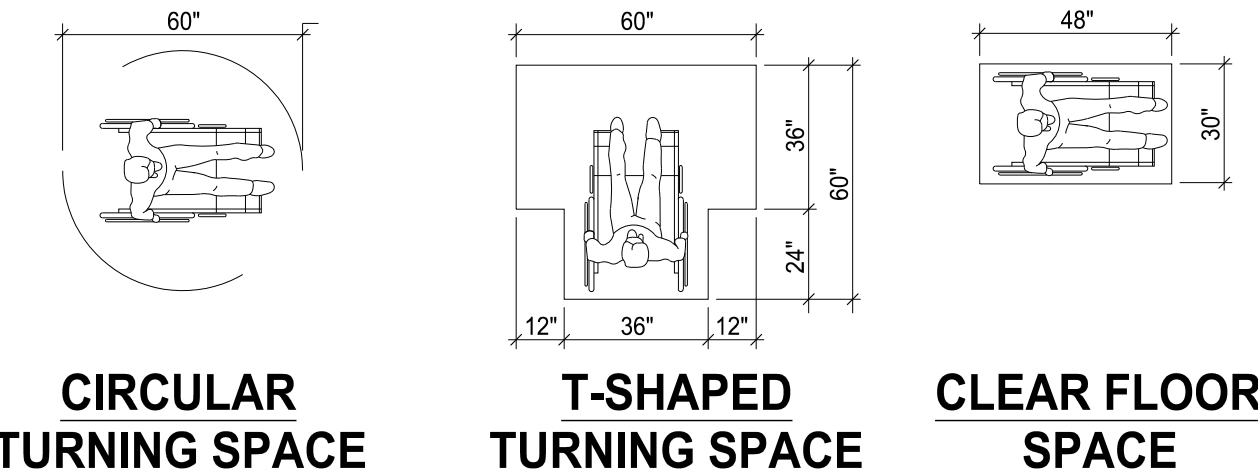
5 PROTRUDING OBJECTS



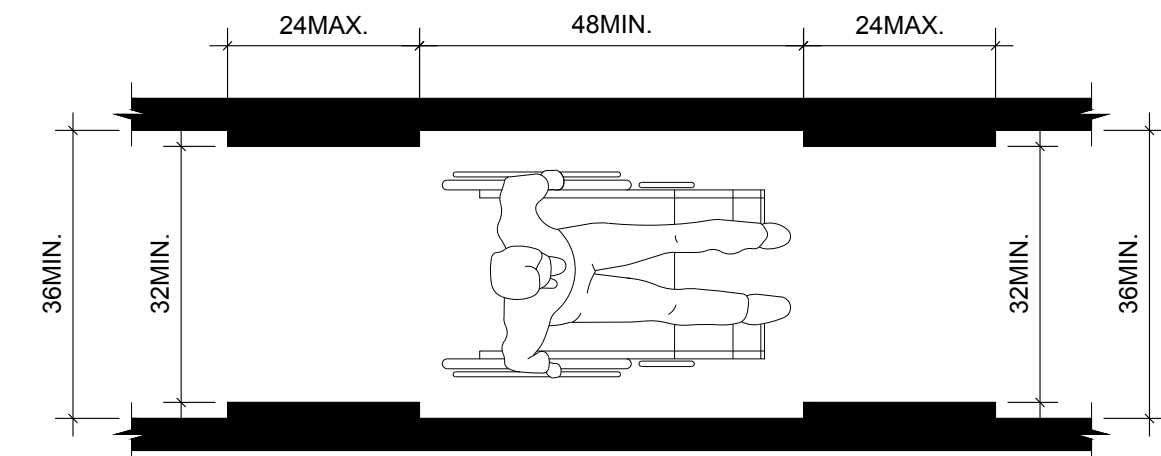
6 REACH / MOUNTING HEIGHTS

BARRIER-FREE STANDARDS INDICATED HEREIN ARE TYPICAL. DIMENSIONS SHOWN ARE TYPICAL UNLESS INDICATED OTHERWISE IN THE DRAWINGS.

1. REFER TO SHEET G1002 FOR APPLICABLE CODES, STANDARDS, AND GUIDELINES.
2. THE CLEAR WIDTH OF A PASSAGEWAY FOR A SINGLE WHEELCHAIR SHALL BE 32 INCHES.
3. THE CLEAR FLOOR SPACE REQUIRED FOR A SINGLE WHEELCHAIR SHALL BE 30 INCHES BY 48 INCHES.
4. THE CLEAR WIDTH OF AN ACCESSIBLE ROUTE SHALL BE 36 INCHES.
5. PROTRUDING OBJECTS: OBJECTS WITH LEADING EDGES LOCATED MORE THAN 27 INCHES AND NOT MORE THAN 80 INCHES ABOVE THE FLOOR SHALL PROTRUDE NOT MORE THAN 4 INCHES FROM THE WALL.
6. GUARDRAILS OR OTHER BARRIERS SHALL BE PROVIDED WHEN VERTICAL CLEARANCE OF AN AREA ADJOINING AN ACCESSIBLE ROUTE IS LESS THAN 80 INCHES HIGH. LEADING EDGES SHALL BE NO HIGHER THAN 27" ABOVE THE FLOOR.
7. CHANGES IN LEVEL: A CHANGE IN LEVEL OF 1/4 INCH HIGH MAXIMUM SHALL BE PERMITTED TO BE VERTICAL AND WITHOUT EDGE TREATMENT. A CHANGE IN LEVEL OF BETWEEN 1/4 INCH AND 1/2 INCH HIGH MAXIMUM SHALL BE BEVELED WITH A SLOPE NOT STEEPER THAN 1:2.
8. DOOR CLOSERS SHALL BE ADJUSTED SO THAT FROM AN OPEN POSITION OF 90 DEGREES, THE TIME REQUIRED TO MOVE THE DOOR TO AN OPEN POSITION OF 12 DEGREES WILL BE 5 SECONDS MINIMUM.
9. DOOR OPENING FORCE, WHERE CLOSERS ARE USED SHALL BE 5 POUNDS MAXIMUM.
10. THE BOTTOM 12 INCHES OF ALL DOORS SHALL HAVE A SMOOTH UNINTERRUPTED SURFACE TO ALLOW THE DOOR TO BE OPENED BY A WHEELCHAIR FOOTREST WITHOUT CREATING A TRAP OR HAZARDOUS CONDITION.
11. POWER ASSISTED DOORS: THE TIME REQUIRED FOR SUCH DOORS TO OPEN TO A BACK CHECK POSITION SHALL BE 3 SECONDS MINIMUM. THE FORCE REQUIRED TO STOP DOOR MOVEMENT SHALL BE 15 POUNDS MAXIMUM.
12. STRUCTURAL STRENGTH: ALLOWABLE STRESSES SHALL NOT BE EXCEEDED FOR MATERIALS USED WHERE A VERTICAL OR HORIZONTAL FORCE OF 250 POUNDS IS APPLIED AT ANY POINT ON THE GRAB BAR OR SEAT, FASTENER MOUNTING DEVICE OR SUPPORTING STRUCTURE.
13. OPERABLE PARTS SHALL BE OPERABLE WITH ONE HAND AND SHALL NOT REQUIRE TIGHT GRASPING, PINCHING, OR TWISTING OF THE WRIST. THE FORCE REQUIRED TO ACTIVATE OPERABLE PARTS SHALL BE 5 POUNDS MAXIMUM.

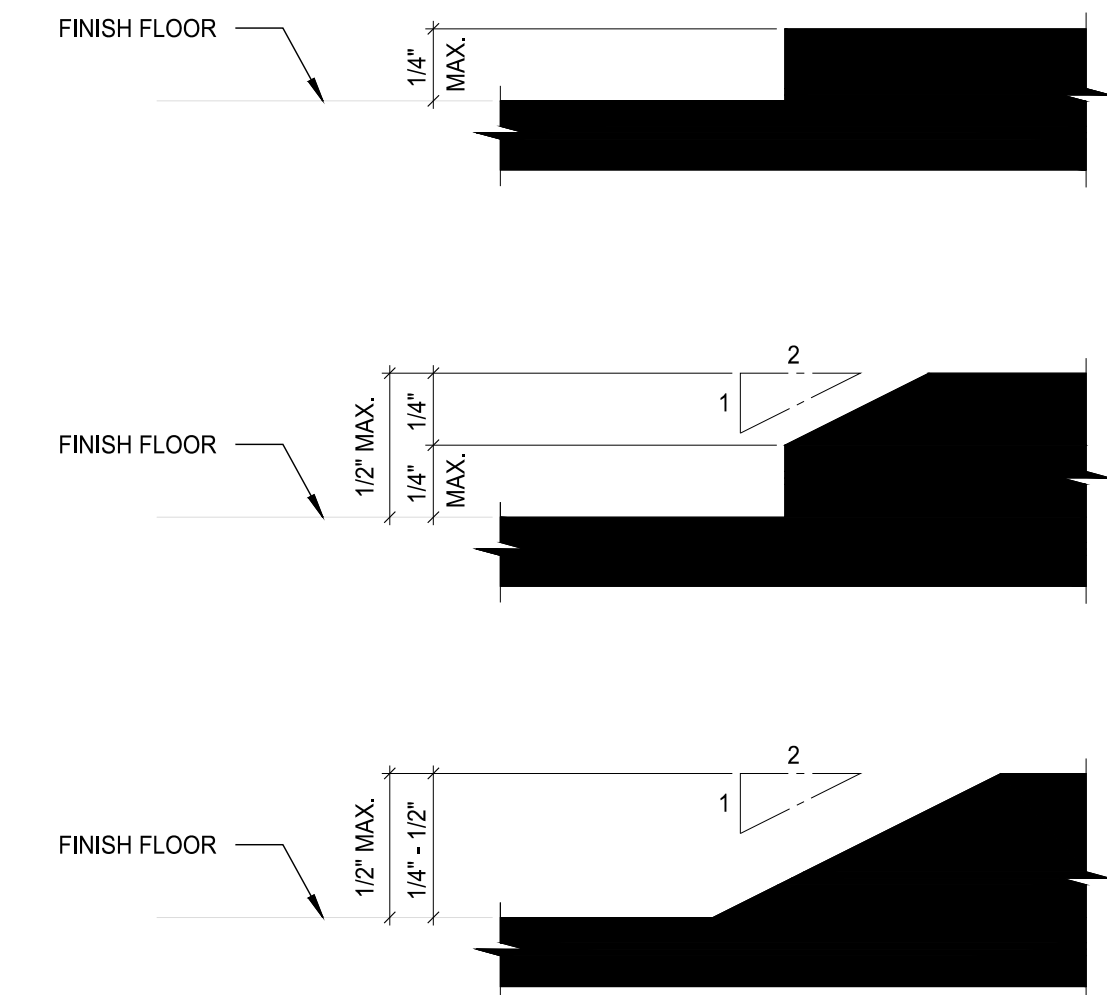


7 ACCESSIBILITY NOTES & INFO.



CLEAR WIDTH OF AN ACCESSIBLE ROUTE	
SEGMENT LENGTH	MINIMUM SEGMENT WIDTH
≤ 24 INCHES	32" INCHES
> 24 INCHES	36" INCHES

8 ACCESSIBLE ROUTE



9 LEVEL CHANGES - (UP TO 1/2")

THE PLANS, IDEAS, ARRANGEMENTS, AND DESIGNS INDICATED OR REPRESENTED BY THIS DRAWING (S) ARE OWNED BY, AND ARE THE PROPERTY OF FRANK V. STURGEON, ARCHITECT, AND ARE INTENDED ONLY IN CONNECTION WITH THIS SPECIFIC PROJECT. THESE DRAWINGS SHALL NOT BE USED, IN WHOLE OR IN PART FOR ANY OTHER PURPOSE FOR WHICH THEY WERE NOT ORIGINALLY INTENDED WITHOUT WRITTEN PERMISSION FROM FRANK V. STURGEON, AIA ARCHITECT, © 2020. FRANK V. STURGEON, AIA ARCHITECT EXPRESSLY RESERVES HIS COMMON LAW COPYRIGHT AND OTHER PROPERTY RIGHTS IN THESE PLANS, SPECIFICATIONS, AND IDEAS. THESE DOCUMENTS ARE NOT TO BE REPRODUCED, CHANGED, OR COPIED (ELECTRONICALLY OR MANUALLY) IN ANY FORM OR MANNER WHATSOEVER NOR ARE THEY TO BE ASSIGNED TO ANY THIRD PARTY WITHOUT OBTAINING WRITTEN PERMISSION OR CONSENT FROM FRANK V. STURGEON, AIA ARCHITECT. © 2020

REVISIONS	

A DESIGN GROUP, LLC
ART-ARCHITECTURE-ENGINEERING
2787 HILL ROAD
VIENNA, VA 22181
FRANK V. STURGEON, AIA
703.938.5226
FRANK@ADG10.COM

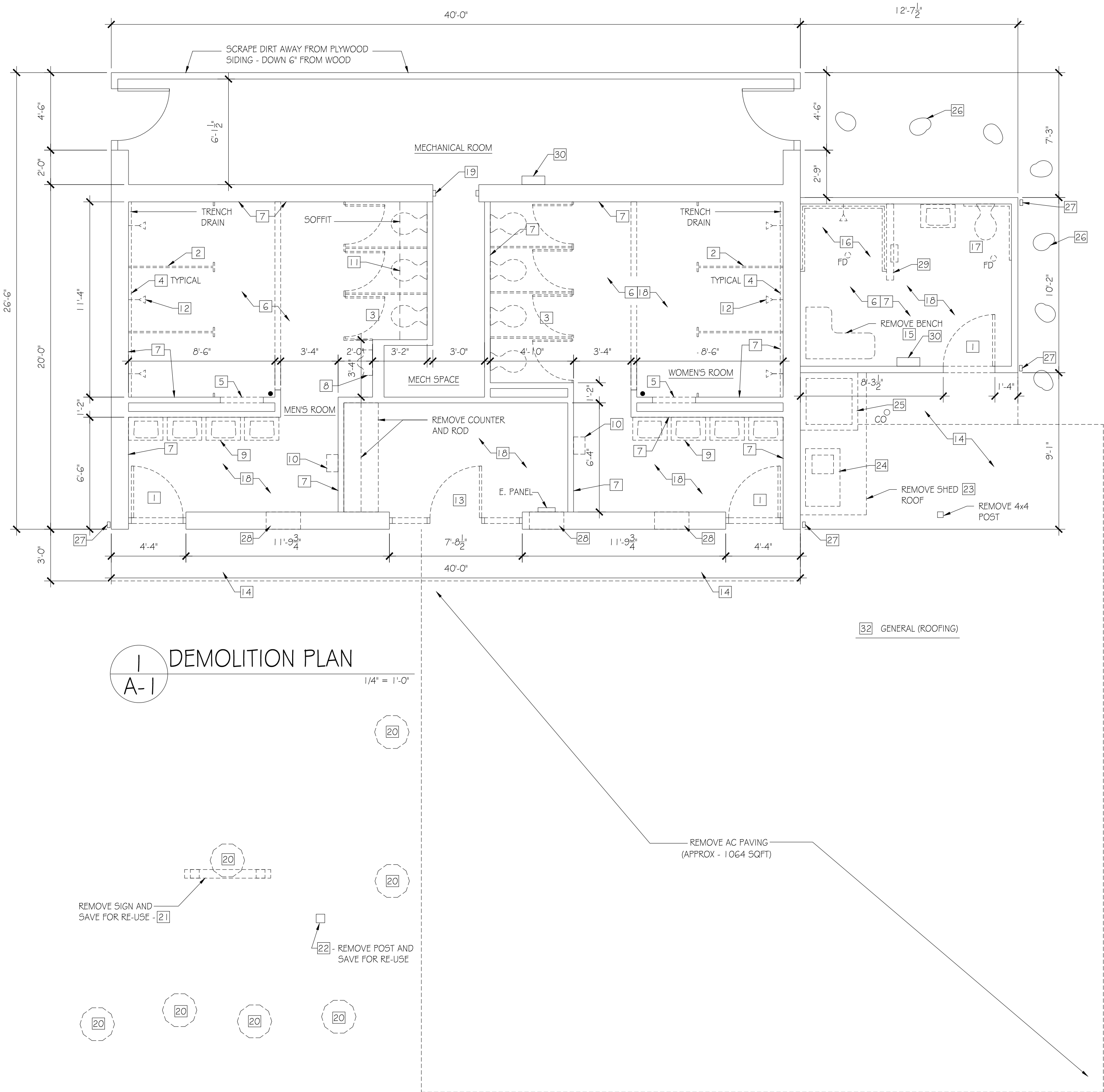
POHICK BAY BATH HOUSE
ADA RENOVATIONS
POHICK BAY REGIONAL PARK
6501 POHICK BAY DRIVE
LORTON, VA 22079
NORTHERN, VA

PROJECT PHASE:
PERMIT SET

DATE:

SHEET No.
A-01

PLAN KEYED NOTES
1 REMOVE HOLLOW METAL STEEL DOOR FRAME. PREPARE OPENING FOR NEW HOLLOW METAL FRAME AND DOOR
2 REMOVE METAL SHOWER PARTITIONS
3 REMOVE METAL TOILET PARTITIONS
4 REMOVE PIPES AND STAINLESS STEEL COVER
5 REMOVE SECTION OF CMU PARTITION SHOWN FOR NEW ACCESS PANEL
6 REMOVE FLOOR TILE, PREPARE CONCRETE FLOOR FOR NEW TILE AND FINISH
7 REMOVE TILE AND WAINSCOT TILE FROM WALL (TYP ALL WALLS)
8 REMOVE URINAL, PREPARE WALL FOR NEW URINAL
9 REMOVE SINKS AND COUNTER, REMOVE MIRRORS AND SOAP DISPENSER
10 REMOVE ELECTRIC HAND DRYER
11 REMOVE GYP. BOARD FROM SOFFIT, PREPARE SOFFIT FOR NEW GYP. BOARD FINISH
12 REMOVE (6) SHOWER HEADS, PIPING AND STAINLESS STEEL
13 REMOVE DOOR, FRAME, THRESHOLD, AND SIDE LITES
14 REMOVE CONCRETE WALK
15 REMOVE EXISTING SHOWER SEAT
16 REMOVE SHOWER AND GRAB BARS
17 REMOVE TOILET FIXTURES, GRAB BARS AND SINK
18 REMOVE TILE FROM WALLS, PREPARE WALLS FOR NEW TILE AND FINISH
19 REMOVE METAL DOOR FRAME, REMOVE WALL OPENING
20 RELOCATE (7) LARGE ROCKS, SEE PARK MANAGER FOR LOCATION (RELOCATED BY OWNER)
21 RELOCATE PARK SIGN (RELOCATED BY OWNER)
22 RELOCATE DOG WASTE SIGN AND STAND (RELOCATED BY OWNER)
23 REMOVE SHED ROOF OVERHANG
24 REMOVE SINK AND COUNTER
25 REMOVE CONCRETE CURB AND BASIN
26 REMOVE BROKEN PIECES OF AC PAVING (SEE DEDUCTED ALTERNATE #1)
27 REMOVE EXISTING DOWNSPOUTS
28 REMOVE EXISTING METAL VENTS. REPAIR BRICK AND FILL IN WITH BRICK
29 REMOVE PARTITION WALL
30 REMOVE EXISTING WALL HEATER
31 REMOVE "CURB" IN CONCRETE FLOOR
32 REMOVE SHINGLES AND UNDERLAYMENT



THE PLANS, IDEAS, ARRANGEMENTS, AND DESIGNS INDICATED OR REPRESENTED BY THIS DRAWING (S) ARE OWNED BY, AND ARE THE PROPERTY OF, FRANK V. STURGEON, ARCHITECT, AND ARE INTENDED ONLY IN CONNECTION WITH THIS SPECIFIC PROJECT. THESE DRAWINGS SHALL NOT BE USED, IN WHOLE OR IN PART FOR ANY OTHER PURPOSE FOR WHICH THEY WERE NOT ORIGINALLY INTENDED WITHOUT WRITTEN PERMISSION FROM FRANK V. STURGEON, AIA ARCHITECT. © 2020 FRANK V. STURGEON, AIA ARCHITECT EXPRESSLY RESERVES HIS COMMON LAW COPYRIGHT AND OTHER PROPERTY RIGHTS IN THESE PLANS, SPECIFICATIONS, AND IDEAS. THESE DOCUMENTS ARE NOT TO BE REPRODUCED, CHANGED, OR COPIED (ELECTRONICALLY OR MANUALLY) IN ANY FORM OR MANNER WHATSOEVER NOR ARE THEY TO BE ASSIGNED TO ANY THIRD PARTY WITH OUT OBTAINING WRITTEN PERMISSION OR CONSENT FROM FRANK V. STURGEON, AIA ARCHITECT. © 2020

REVISIONS

A DESIGN GROUP, LLC
ART-ARCHITECTURE-ENGINEERING
2787 HILL ROAD
VIENNA, VA 22181
FRANK V. STURGEON, AIA
703.938.5226
FRANK@ADG10.COM

POHICK BAY BATH HOUSE
ADA RENOVATIONS
POHICK BAY REGIONAL PARK
6501 POHICK BAY DRIVE
LORTON, VA 22079
NORTHERN, VA

PROJECT PHASE:
PERMIT SET

DATE:

SHEET No.
A-1

THE PLANS, IDEAS, ARRANGEMENTS, AND DESIGNS INDICATED OR REPRESENTED BY THIS DRAWING (S) ARE OWNED BY, AND ARE THE PROPERTY OF FRANK V. STURGEON, ARCHITECT, AND ARE INTENDED ONLY IN CONNECTION WITH THIS SPECIFIC PROJECT. THESE DRAWINGS SHALL NOT BE USED, IN WHOLE OR IN PART FOR ANY OTHER PURPOSE FOR WHICH THEY WERE NOT ORIGINALLY INTENDED WITHOUT WRITTEN PERMISSION FROM FRANK V. STURGEON, AIA ARCHITECT. © 2020 FRANK V. STURGEON, AIA ARCHITECT EXPRESSLY RESERVES HIS COMMON LAW COPYRIGHT AND OTHER PROPERTY RIGHTS IN THESE PLANS, SPECIFICATIONS AND IDEAS. THESE DOCUMENTS ARE NOT TO BE REPRODUCED, CHANGED, OR COPIED (ELECTRONICALLY OR MANUALLY) IN ANY FORM OR MANNER WHATSOEVER NOR ARE THEY TO BE ASSIGNED TO ANY THIRD PARTY WITHOUT OBTAINING WRITTEN PERMISSION OR CONSENT FROM FRANK V. STURGEON, AIA ARCHITECT. © 2020

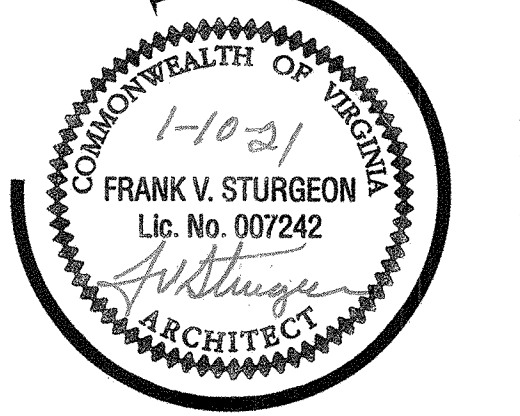
REVISIONS
Revision 2-9-2021

AG
A DESIGN GROUP, LLC
ART-ARCHITECTURE-ENGINEERING
2787 HILL ROAD
VIENNA, VA 22181
FRANK V. STURGEON, AIA
703.938.5226
FRANK@ADG10.COM

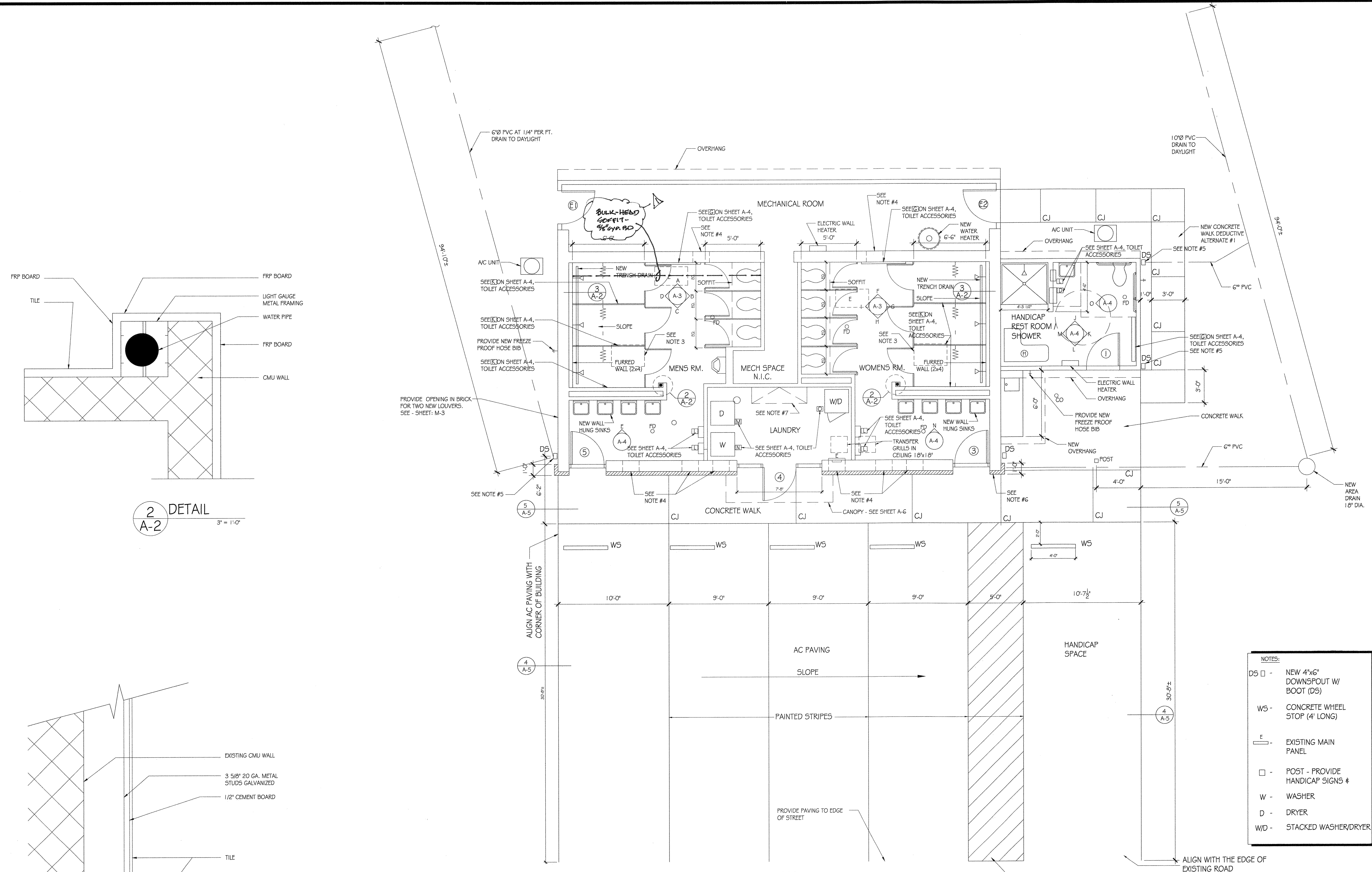
POHICK BAY BATH HOUSE
ADA RENOVATIONS
POHICK BAY REGIONAL PARK
6501 POHICK BAY DRIVE
LORTON, VA 22079
NORTHERN, VA

PROJECT PHASE:
PERMIT SET

DATE:
1-10-2021



SHEET No.
A-2



2 DETAIL
A-2
3' = 1'-0"

3 DETAIL
A-2
3' = 1'-0"

1 NEW PLAN
A-2
1/4" = 1'-0"

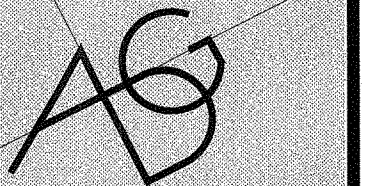


- NOTES:
1. NEW FREEZE PROOF HOSE BIB
 2. REMOVE EXISTING ALUMINUM VENTS AND REPLACE WITH NEW VENTS - PATCH AND REPAIR BROKEN BRICKS TO MATCH EXISTING (6-TOTAL) VENTS: HOHMANN AND BARNARD, INC. - THRU WALL ALUMINUM BRICK VENTS, STYLE F, MATCH EXISTING SIZES
 3. CEILING ACCESS: KARP OR EQUAL 18"x18" PROVIDE ALL SHEET METAL SUPPORT REMOVE CAST IRON VENTS, FILL IN WITH BRICK AND INTERIOR WALL FINISH (TYPICAL) PATCH TO MATCH BRICK AND MORTAR
 4. DOWNSPOUT 3"x4" BOOT- J.R. HOE AND SONS POWER COATED 3"x4" (BELOW GRADE DISCHARGE) SERIES A, LENGTH 16'
 5. PATCH AND REPAIR BRICK TO MATCH BRICK AND MORTAR
 6. FOLDING WALL TABLE - 5' X 18"
 7. CULTURED STONE FACING SEE SHEET A-6.

- NOTES:
- DS □ - NEW 4"x6" DOWNSPOUT W/ BOOT (DS)
 - WS - CONCRETE WHEEL STOP (4' LONG)
 - E - EXISTING MAIN PANEL
 - - POST - PROVIDE HANDICAP SIGNS #
 - W - WASHER
 - D - DRYER
 - W/D - STACKED WASHER/DRYER

THE PLANS, IDEAS, ARRANGEMENTS, AND DESIGNS INDICATED OR REPRESENTED BY THIS DRAWING (S) ARE OWNED BY, AND ARE THE PROPERTY OF FRANK V. STURGEON, ARCHITECT, AND ARE INTENDED ONLY IN CONNECTION WITH THIS SPECIFIC PROJECT. THESE DRAWINGS SHALL NOT BE USED, IN WHOLE OR IN PART FOR ANY OTHER PURPOSE FOR WHICH THEY WERE NOT ORIGINALLY INTENDED WITHOUT WRITTEN PERMISSION FROM FRANK V. STURGEON, AIA ARCHITECT. © 2020 FRANK V. STURGEON, AIA ARCHITECT EXPRESSLY RESERVES HIS COMMON LAW COPYRIGHT AND OTHER PROPERTY RIGHTS IN THESE PLANS, SPECIFICATIONS, AND IDEAS. THESE DOCUMENTS ARE NOT TO BE REPRODUCED, CHANGED, OR COPIED (ELECTRONICALLY OR MANUALLY) IN ANY FORM OR MANNER WHATSOEVER NOR ARE THEY TO BE ASSIGNED TO ANY THIRD PARTY WITHOUT OBTAINING WRITTEN PERMISSION OR CONSENT FROM FRANK V. STURGEON, AIA ARCHITECT. © 2020

REVISIONS 2-9-2021



A DESIGN GROUP, LLC
ART-ARCHITECTURE-ENGINEERING
2787 HILL ROAD
VIENNA, VA 22181
FRANK V. STURGEON, AIA
703.938.5226
FRANK@ADG10.COM

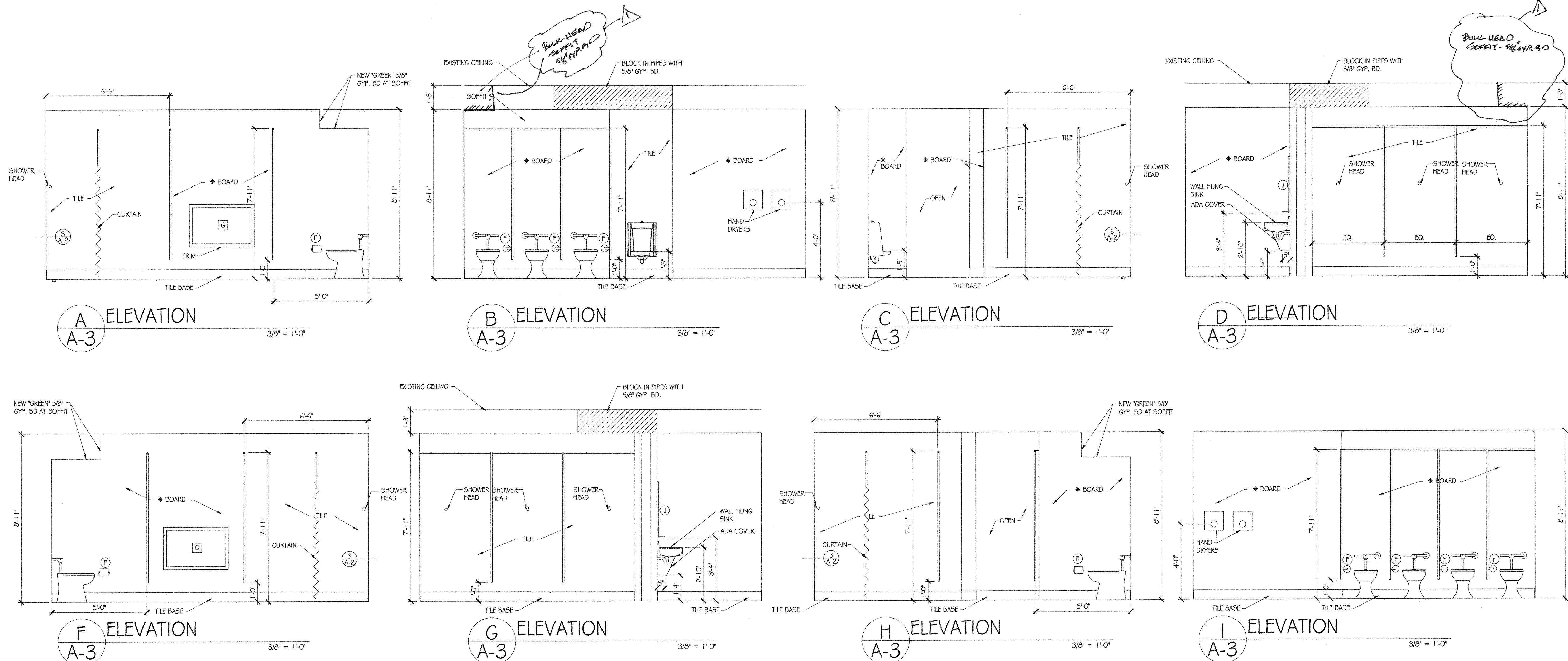
POHICK BAY BATH HOUSE
ADA RENOVATIONS
POHICK BAY REGIONAL PARK
6501 POHICK BAY DRIVE
LORTON, VA 22079
NORTHERN, VA

PROJECT PHASE:
PERMIT SET

DATE:
1-10-2021

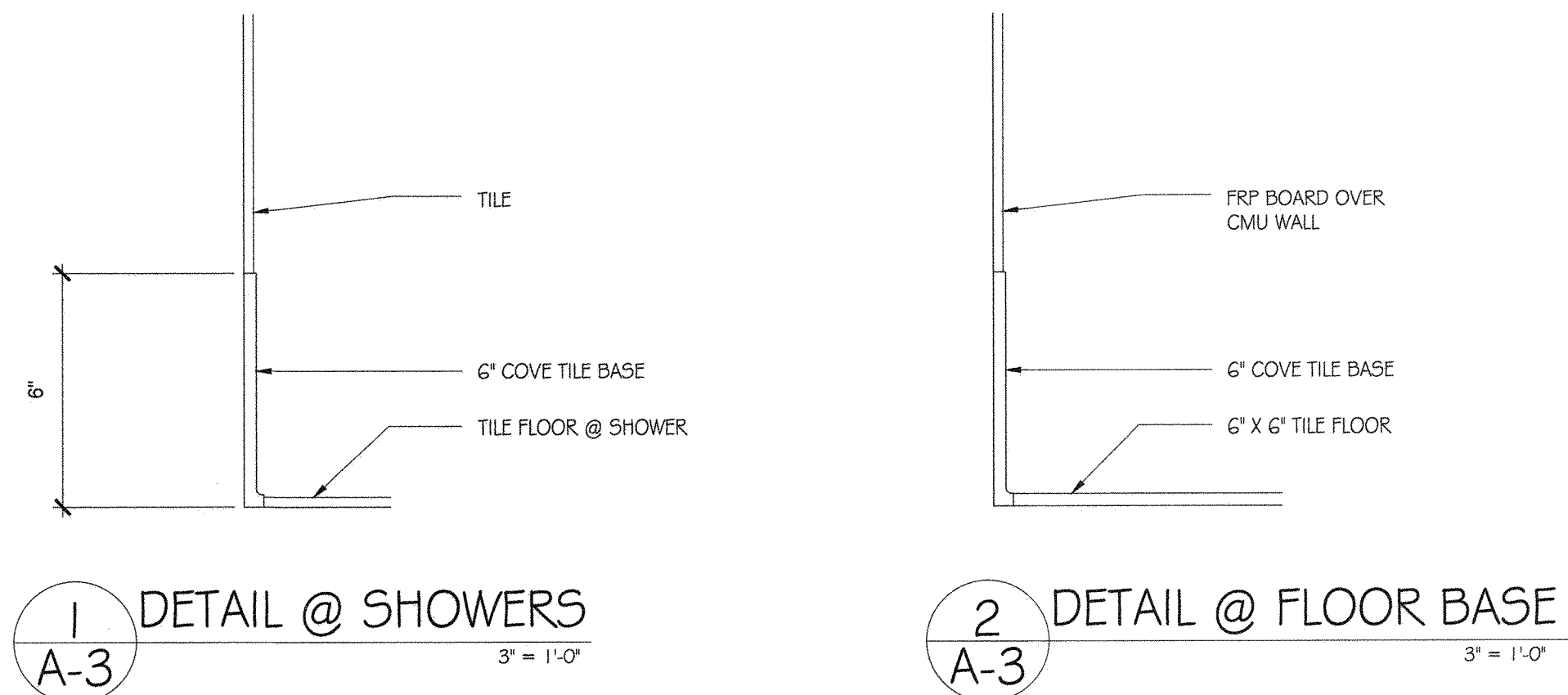


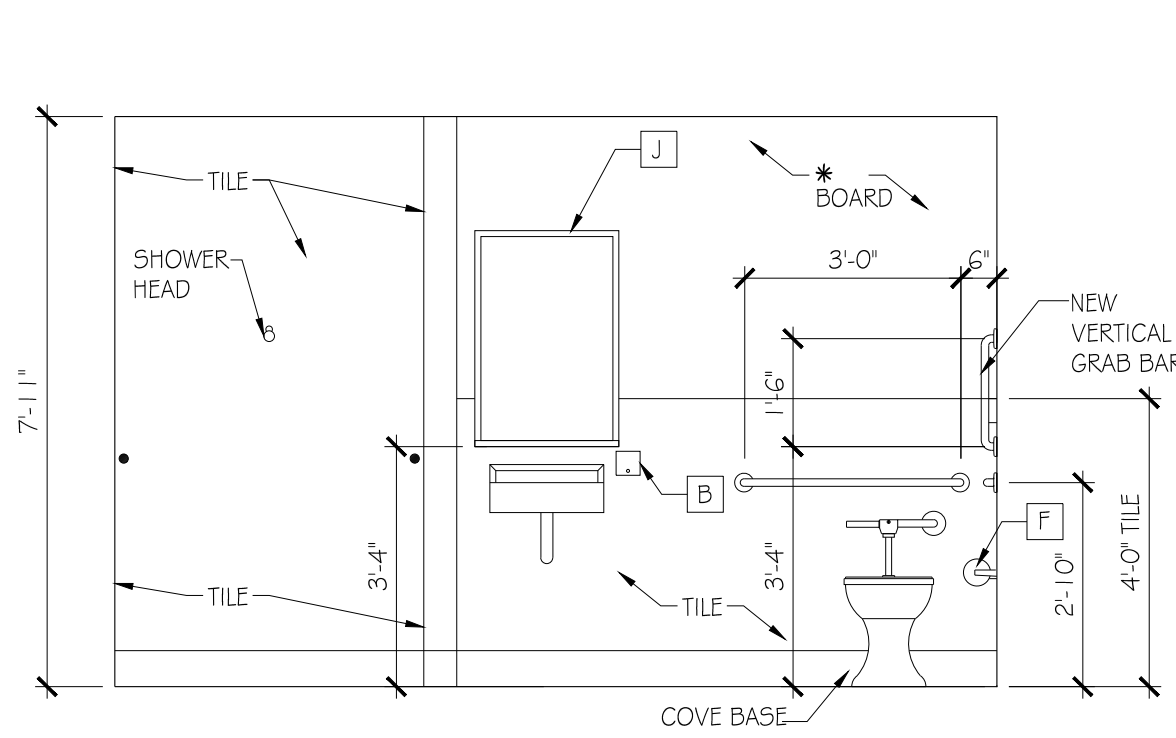
SHEET No.
A-3



GENERAL NOTE:

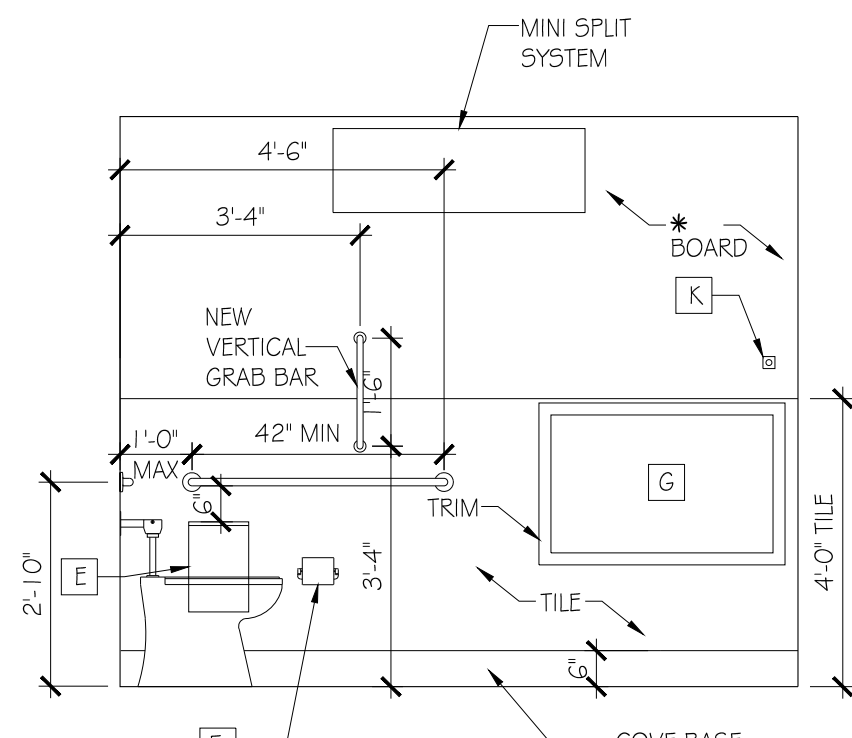
- OVERHEAD BRACED, FLOOR MOUNTED TOILET AND SHOWER PARTITIONS
- BRADLEY, OR GLOBE, POLYMER SOLID PLASTIC PARTITIONS, DOOR HARDWARE, AND PARTS STAINLESS STEEL





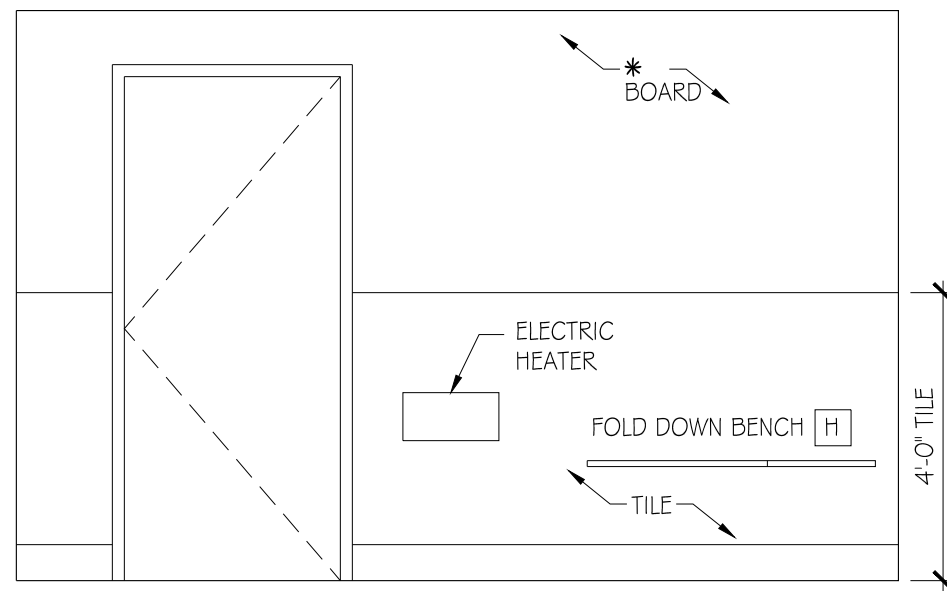
J
A-4
ELEVATION

3/8" = 1'-0"



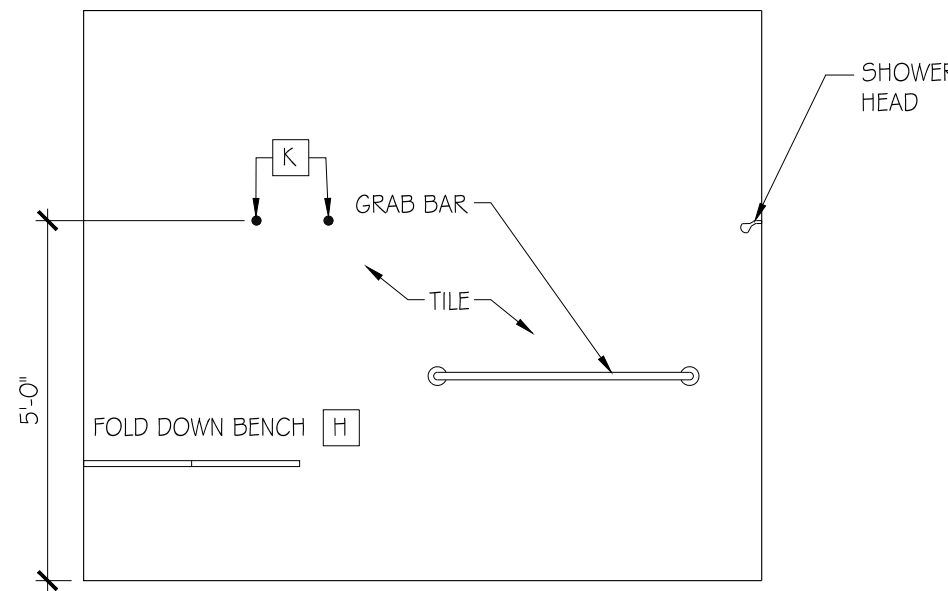
K
A-4
ELEVATION

3/8" = 1'-0"



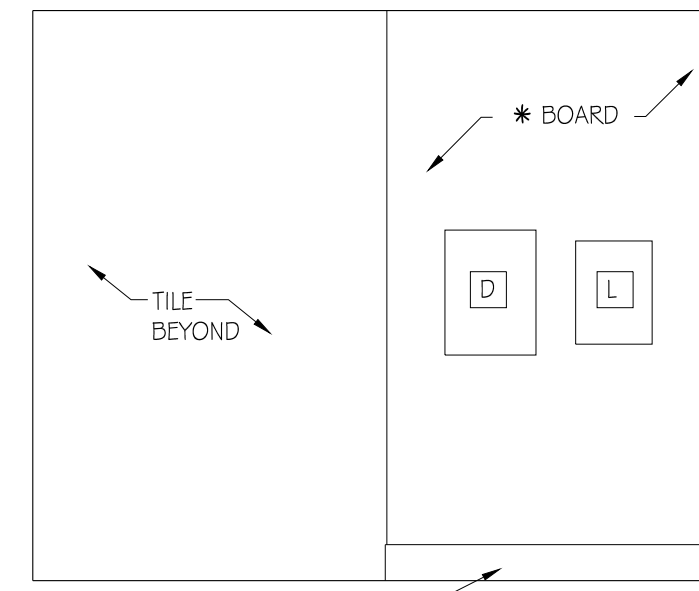
L
A-4
ELEVATION

3/8" = 1'-0"



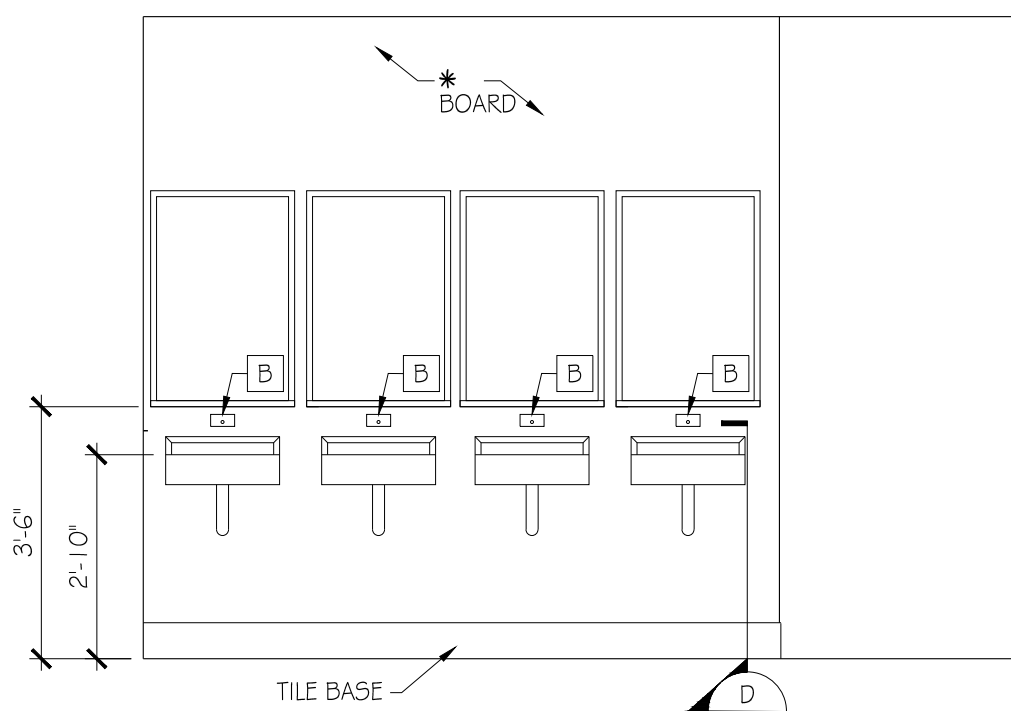
M
A-4
ELEVATION

3/8" = 1'-0"



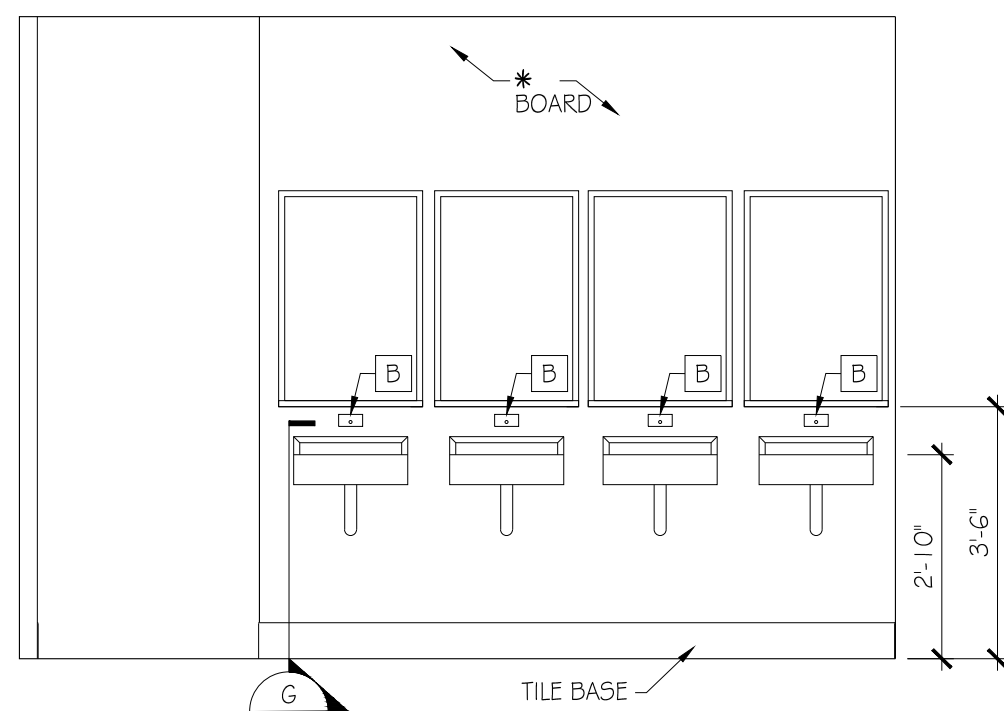
O
A-4
ELEVATION

3/8" = 1'-0"



E
A-4
MEN'S ROOM

3/8" = 1'-0"



N
A-4
WOMEN'S PLAN

3/8" = 1'-0"

TOILET ACCESSORIES & EQUIPMENT LIST		BOBRICK #
A - NOT USED		
B - SOAP DISPENSER	OFCI	
C - PAPER TOWEL DISPENSER	OFCI	
D - PAPER TOWEL DISPOSAL (SEMI RECESS)		B 3944
E - SANITARY NAPKIN DISPENSER		B270
F - TOILET PAPER DISPENSER	OFCI	
G - FOLDING BABY CHANGING TABLE		"KOALA" CREAM KB100-00ST RECESSED INTO WALL
H - FOLDING BENCH		"HARNEY" OR EQUAL #19070
J - MIRROR W/ SHELF 24"x36"		B-292
K - ROBE HOOK		B-542
L - ELECTRIC HAND DRYER	OFCI	VERD-DRI #Q979A (WHITE) [110 - 120V]
M - DRYER	OFCI	SPEED QUEEN #55ENC
N - WASHER	OFCI	SPEED QUEEN #5FNNCASP
O - STACKED WASHER/DRYER	OFCI	SPEED QUEEN #5ST

NOTE:
OFCI = OWNER FURNISHED CONTRACTOR INSTALLED

THE PLANS, IDEAS, ARRANGEMENTS, AND DESIGNS INDICATED OR REPRESENTED BY THIS DRAWING (S) ARE OWNED BY, AND ARE THE PROPERTY OF FRANK V. STURGEON, ARCHITECT, AND ARE INTENDED ONLY IN CONNECTION WITH THIS SPECIFIC PROJECT. THESE DRAWINGS SHALL NOT BE USED, IN WHOLE OR IN PART FOR ANY OTHER PURPOSE FOR WHICH THEY WERE NOT ORIGINALLY INTENDED WITHOUT WRITTEN PERMISSION FROM FRANK V. STURGEON, AIA ARCHITECT. © 2020 FRANK V. STURGEON, AIA ARCHITECT EXPRESSLY RESERVES HIS COMMON LAW COPYRIGHT AND OTHER PROPERTY RIGHTS IN THESE PLANS, SPECIFICATIONS, AND IDEAS. THESE DOCUMENTS ARE NOT TO BE REPRODUCED, CHANGED, OR COPIED (ELECTRONICALLY OR MANUALLY) IN ANY FORM OR MANNER WHATSOEVER NOR ARE THEY TO BE ASSIGNED TO ANY THIRD PARTY WITH OUT OBTAINING WRITTEN PERMISSION OR CONSENT FROM FRANK V. STURGEON, AIA ARCHITECT. © 2020

REVISIONS

AS

A DESIGN GROUP, LLC
ART-ARCHITECTURE-ENGINEERING
2787 HILL ROAD
VIENNA, VA 22181
FRANK V. STURGEON, AIA
703.938.5226
FRANK@ADG10.COM

POHICK BAY BATH HOUSE
ADA RENOVATIONS
POHICK BAY REGIONAL PARK
6501 POHICK BAY DRIVE
LORTON, VA 22079
NORTHERN, VA

PROJECT PHASE:

PERMIT SET

DATE:

SHEET No.

A-4

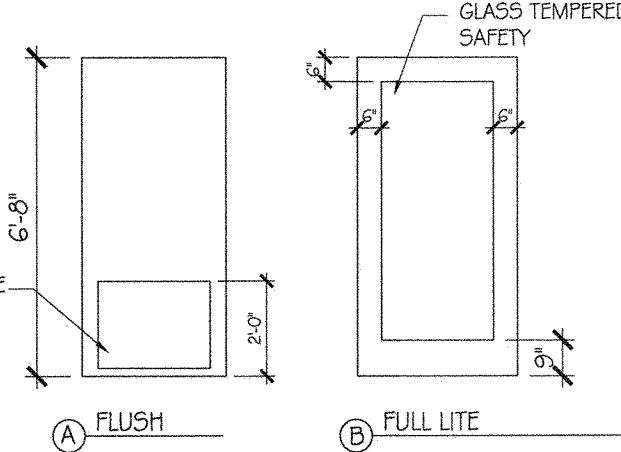
DOOR AND FRAME SCHEDULE												
DR #	SIZE			DOOR			THRES	LOCKSET	FRAME	FIRE	NOTES	
	WIDTH	HGT	THK	MATL	HINGES	TYPE						
1	3'-0"	6'-8"	1 3/4"	HM	1 1/2" PAIR	A	METAL	PRIVACY	HM	1	-	W/ CLOSURE AND ADA ELECTRONIC OPENER
2	NOT USED	6'-8"	1 3/4"	HM	1 1/2" PAIR	A	METAL	PRIVACY	HM	1	-	NOT USED
3	3'-0"	6'-8"	1 3/4"	HM	1 1/2" PAIR	A	METAL	PRIVACY	HM	1	-	W/ CLOSURE
4	3'-0"	6'-8"	1 3/4"	HM	1 1/2" PAIR	B	METAL	PRIVACY	HM	2	-	W/ SIDE LITES
5	3'-0"	6'-8"	1 3/4"	HM	1 1/2" PAIR	A	METAL	PRIVACY	HM	1	-	W/ CLOSURE
6	ACCESS DOORS IN CMU											
7	ACCESS DOORS IN CMU											
E1	EXISTING	-	-	-	-	-	-	-	-	-	-	N.I.C.
E2	EXISTING	-	-	-	-	-	-	-	-	-	-	N.I.C.

DOOR NOTES (TYPICAL)

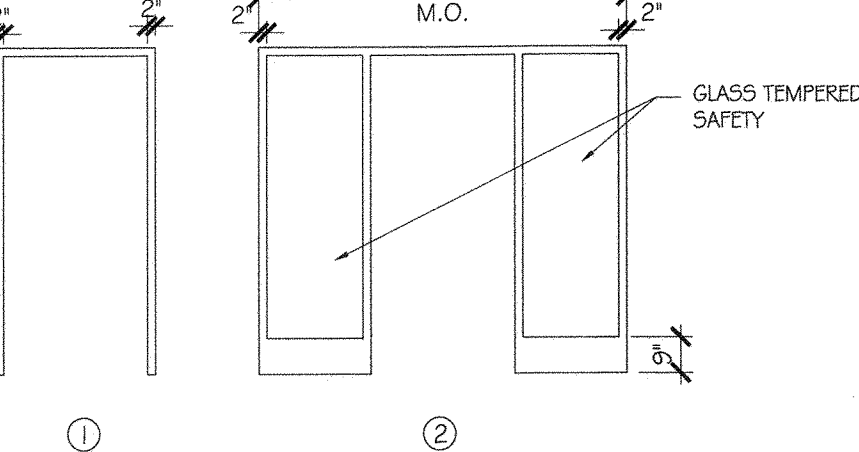
1. ALUMINUM THRESHOLD - ZERO
2. WEATHER STRIPPING - ZERO
3. CLOSURE
4. DOOR SILENCERS
5. KEY LOCKSET - "SARGENT"
6. KEYING - REFER TO OWNER

NOTE: NO THRU BOLTS FOR CLOSURE

DOOR TYPES



DOOR FRAME TYPES



ROOM FINISH SCHEDULE								
ROOM NAME	FLOOR	BASE	WALLS				CEILING	REMARKS
			NORTH	EAST	SOUTH	WEST		
HANDICAP RESTROOM/SHOWER	TILE	TILE	*	*	*	*	PLYWOOD, PAINTED	SHOWER-WALL - TILE
WOMEN'S ROOM	TILE	TILE	*	*	*	*	5/8" GYP. BD. PAINTED	SHOWER-WALL - TILE
LAUNDRY	TILE	COVE TILE	*	*	*	*	5/8" GYP. BD. PAINTED	SHOWER-WALL - TILE
MEN'S ROOM	TILE	-	*	*	*	*	5/8" GYP. BD. PAINTED	SHOWER-WALL - TILE
MECH SPACE	CONC	-	-	-	-	-	N.I.C.	N.I.C.

NOTES:

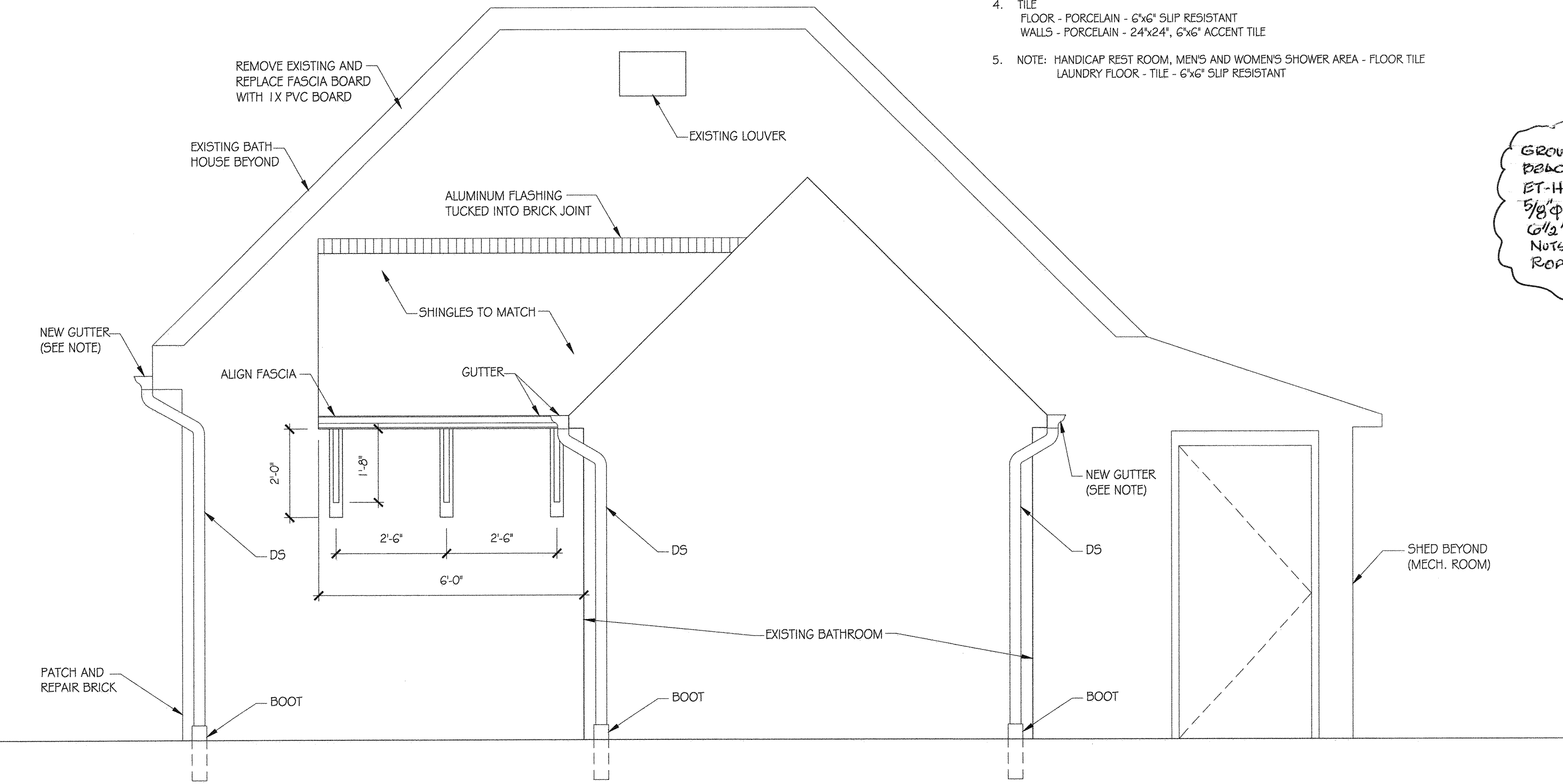
1. "GREEN" - WATER RESISTANT GYP. BD.
2. INSULATION:
 - A. IN WOOD STUD WALLS R-21 (BATT)
 - B. IN ATTIC - R-38 ON CEILING (BATT)
3. *WALL FINISH:
 - A. "ALTO" WALL CLADDING (WHITE ROCK MAT) COLOR: ALMOND 10' / 3.0M [FT32] LRV - 70
 - B. FRO BOARD, CLASS A, PEBBLED-BEIGE 48"x120"x.090" THICK, ASTM - E 84 WITH PVC TRIM
4. TILE FLOOR - PORCELAIN - 6"x6" SLIP RESISTANT WALLS - PORCELAIN - 24"x24", 6"x6" ACCENT TILE
5. NOTE: HANDICAP REST ROOM, MEN'S AND WOMEN'S SHOWER AREA - FLOOR TILE LAUNDRY FLOOR - TILE - 6"x6" SLIP RESISTANT

ASPHALT
1 1/2" SURFACE PAVR, 3" BASE
4 1/2" 5M-9.5A SURFACE COURSE
6" 21-A BASE
COMPACTED SUBGRADE
(COMPACTED TO 95% DENSITY AT OPTIMUM MOISTURE CONTENT ± 2%, VDOT BTM-1 METHOD)

4 ONSITE PAVEMENT SECTION
A-5
NOT TO SCALE

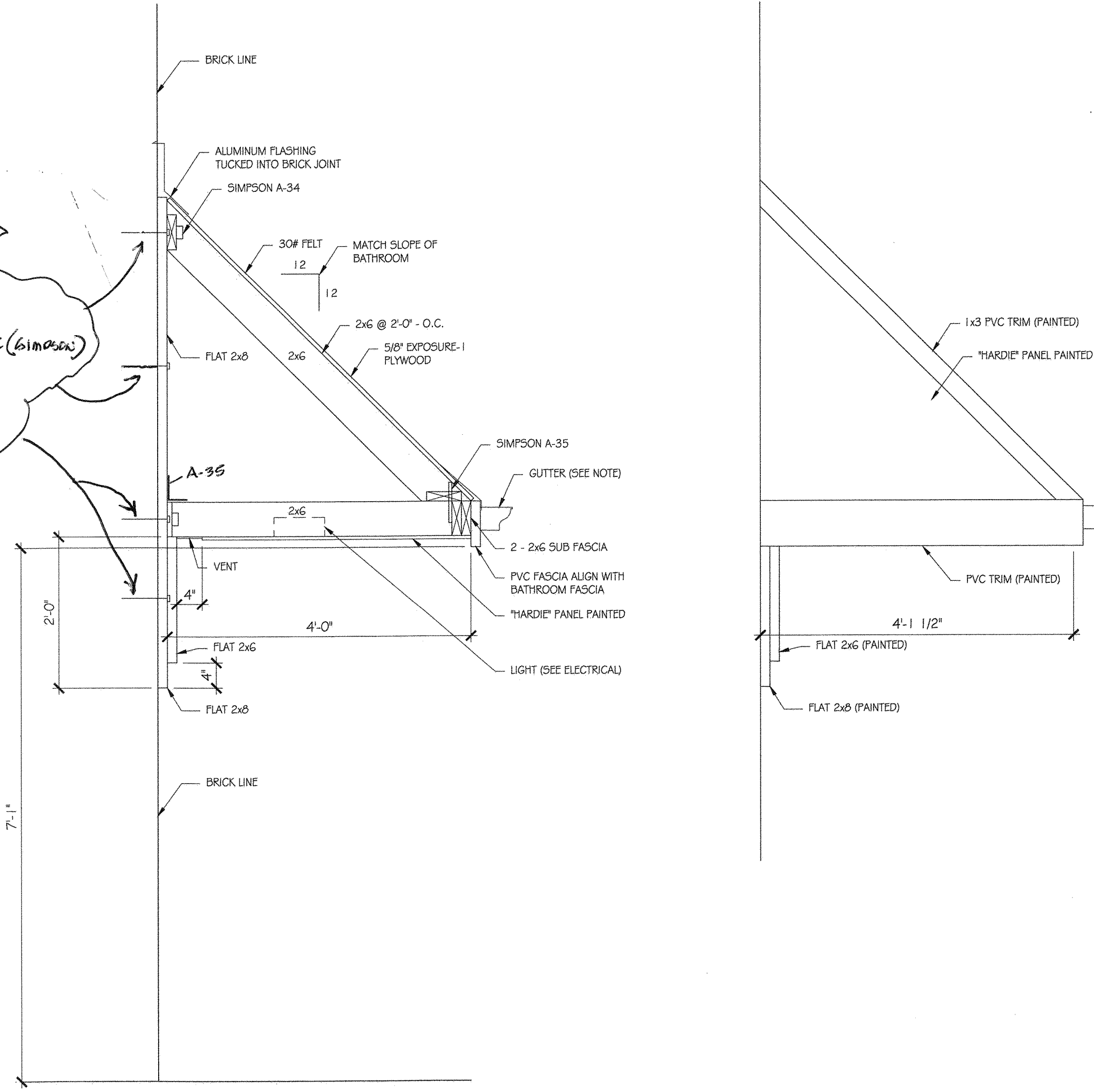
4" VDOT STD. A-3 CONC.
6X6 WELDED WIRE MESH
6" 21-A BASE
COMPACTED SUBGRADE
(COMPACTED TO 95% DENSITY AT OPTIMUM MOISTURE CONTENT ± 2%, VDOT BTM-1 METHOD)

5 ONSITE SIDEWALK DETAIL
A-5
NOT TO SCALE
(WIDTH AS SHOWN ON PLAN)



1 SHED ROOF ELEVATION
A-5
1/2" = 1'-0"

GROUT CMU CELLS AT BRACKETS.
ET-HP EPOXY ADHESIVE (SIMPSON)
5/8" THERMOED ROPS
1/2" MIN. EMBEDMENT
NUTS & WASHER
ROPS SPACED 36" O.C.

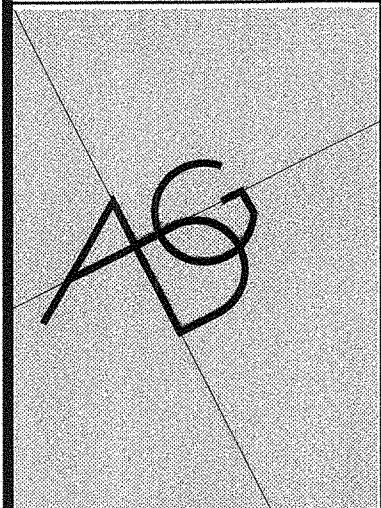


2 SECTION
A-5
3/8" = 1'-0"
NOTE: ALL-ROOF FRAMING LUMBER SPF-TREATED

3 SECTION - END VIEW
A-5
3/8" = 1'-0"

THE PLANS, IDEAS, ARRANGEMENTS, AND DESIGNS INDICATED OR REPRESENTED BY THIS DRAWING (S) ARE OWNED BY, AND ARE THE PROPERTY OF FRANK V. STURGEON, ARCHITECT, AND ARE INTENDED ONLY IN CONNECTION WITH THIS SPECIFIC PROJECT. THESE DRAWINGS SHALL NOT BE USED, IN WHOLE OR IN PART FOR ANY OTHER PURPOSE FOR WHICH THEY WERE NOT ORIGINALLY INTENDED WITHOUT WRITTEN PERMISSION FROM FRANK V. STURGEON, AIA ARCHITECT. © 2020 FRANK V. STURGEON, AIA ARCHITECT EXPRESSLY RESERVES HIS COMMON LAW COPYRIGHT AND OTHER PROPERTY RIGHTS IN THESE PLANS, SPECIFICATIONS AND IDEAS. THESE DOCUMENTS ARE NOT TO BE REPRODUCED, CHANGED, OR COPIED (ELECTRONICALLY OR MANUALLY) IN ANY FORM OR MANNER WHATSOEVER NOR ARE THEY TO BE ASSIGNED TO ANY THIRD PARTY WITH OUT OBTAINING WRITTEN PERMISSION OR CONSENT FROM FRANK V. STURGEON, AIA ARCHITECT. © 2020

REVISIONS
REVISION 9-9-2021



A DESIGN GROUP, LLC
ART-ARCHITECTURE-ENGINEERING
2787 HILL ROAD
VIENNA, VA 22181
FRANK V. STURGEON, AIA
703.938.5226
FRANK@ADG10.COM

POHICK BAY BATH HOUSE
ADA RENOVATIONS
POHICK BAY REGIONAL PARK
6501 POHICK BAY DRIVE
LORTON, VA 22079
NORTHERN, VA

PROJECT PHASE:
PERMIT SET

DATE:
1-10-2021



SHEET No.
A-5

REVISIONS 2-9-2021

POHICK BAY BATH HOUSE
ADA RENOVATION

DATE: 1-10-202

