

BID DOCS

Jean R. Packard Occoquan Center | Occoquan Regional Park, Virginia



General Notes

1. Owner's Responsibilities:
The client/owner has reviewed the Contract Documents and approves the design, including the materials, suggested fabrication methods, and intent. It is the client's responsibility to review and accept or reject any revisions the fabricator makes to these drawings. The client may delegate to The Design Minds, Inc., approvals authority.
2. Contract Documents:
The Contract Documents, including but not limited to this drawing set, are not for construction. The design and requirements shown or noted are intended only to establish the visual design concept and intent. The Fabricator is responsible for verifying site conditions and for fabricating the entire exhibit making any modifications and additions necessary, but not explicitly described, to fulfill the requirements in accordance with visual design concept and intent as described in the Contract Documents.
3. Shop Drawings:
Prepare detailed shop drawings of all components based on verified site conditions. Show design, material types, sizes, finishes, colors, dimensions, connections to adjacent work, consideration for thermal and moisture movement, anchorage to structures, and manufacturers' part numbers. Submit shop drawings to Owner and Designer for review. Designer will review for compliance with contract documents. Owner will approve or reject submittals.

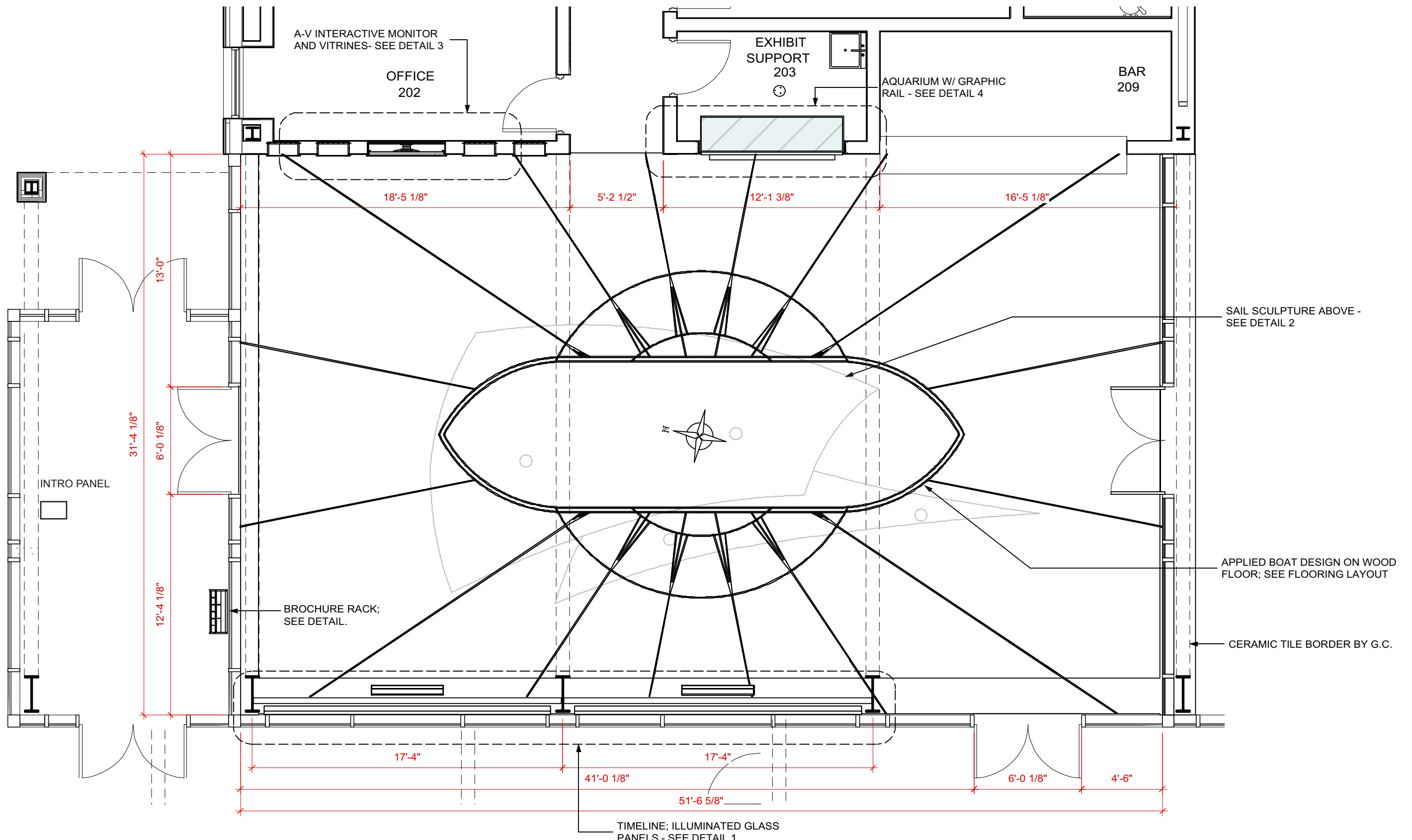
Abbreviations:

@	At	ID	Inside/interior diameter
#	Number	in.	Inch
&	And	info.	Information
AFF	Above finished floor	int.	Interior
alt.	Alternative	lam.	Laminate
approx.	Approximate, approximately	lin.	Linear
arch.	Architecture	mat.	Material
bldg.	Building	max.	Maximum
blk.	Block, blocking	MB	Machine bolt
bot.	Bottom	MDF	Medium density fiberboard
byd.	Beyond	mech.	Mechanical
cab.	Cabinet	min.	Minimum
C to C	Center to center	misc.	Miscellaneous
CL	Center line	mldg.	Molding
clg.	Ceiling	MS	Machine screw
clr.	Clear	mtl.	Metal
CMS	Countersunk machine screw	NIC	Not in contract
CMU	Concrete masonry unit(s)	no.	Number
col.	Column	nom.	Nominal
conc.	Concrete	NTS	Not to scale
cont.	Continuous	OA	Overall
cont'd.	Continued	OC	On center
cntsk.	Countersink, countersunk	OD	Outside diameter
CWS	Countersunk wood screw	ovhd.	Over head
D	Deep (dimension)	perf.	Perforated
det.	Detail	perp.	perpendicular
diag.	Diagonal	plam.	Plastic laminate
dim.	Dimension	plywd.	Plywood
dn.	Down	ptd.	Painted
dr.	Door	prelim.	Preliminary
dwg.	Drawing	R	Radius
(E)	Existing	rec.	Receive
ea.	Each	reqd	Required
elev.	Elevation	rev.	Revised, revision
elec.	Electrical	RHS	Round head screw
eq.	Equipment	sect.	Section
est.	Estimated	sim.	Similar
EW	Each way	spec.	Specifications
exp.	Exposed	sq.	Square
ext.	Exterior	SS	Stainless steel
FF	Finish floor	std.	Standard
FH	Flat head screw	stl.	Steel
fin.	Finish, finished	struct.	Structural
fl.	Floor	sub.	Substitute
ft.	Foot/feet	sym.	Symetrical
ftg.	footing	temp.	Temporary
galv.	Galvanized	TOW	Top of wall
gen.	General	typ.	Typical
GC	General Contractor	var.	Varies, variable
GWB	Gypsum Wall Board	vert.	Vertical
H	High (dimension)	W	Wide (dimension)
hdwd.	Hardwood	w/	With
hor.	Horizontal	w/o	Without
ht.	Height	wd.	Wood

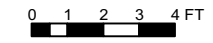
Finish Schedule

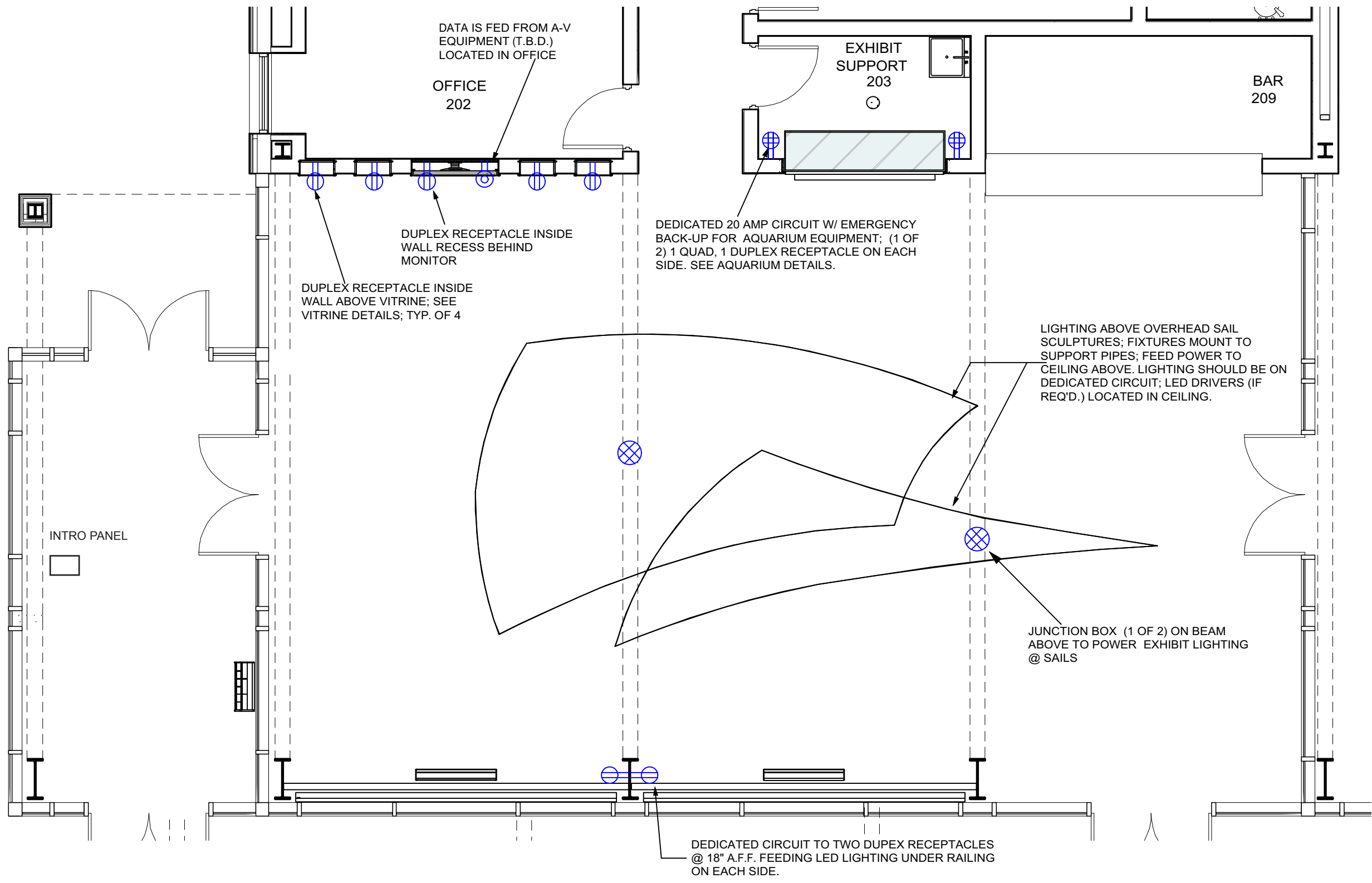


Coordinate paint color with designer and ongoing building signage efforts



1 LOCATION PLAN @ Enviromental Education / Lobby
 Scale: 3/16" = 1'-0"





ELECTRICAL NOTES

ALL POWER FOR EXHIBITRY INCLUDING OVERHEAD EXHIBIT LIGHTING, GLASS WALL, AQUARIUM, MONITOR, DISPLAY CASES TO BE ON DEDICATED CIRCUITS.

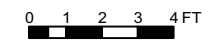
COORDINATE LOCATIONS, SPECIFICATIONS, AND QUANTITIES OF SWITCHES, DIMMERS, TIMERS, AND OTHER EXHIBIT CONTROLS WITH CLIENT, DESIGNER, AND G.C.

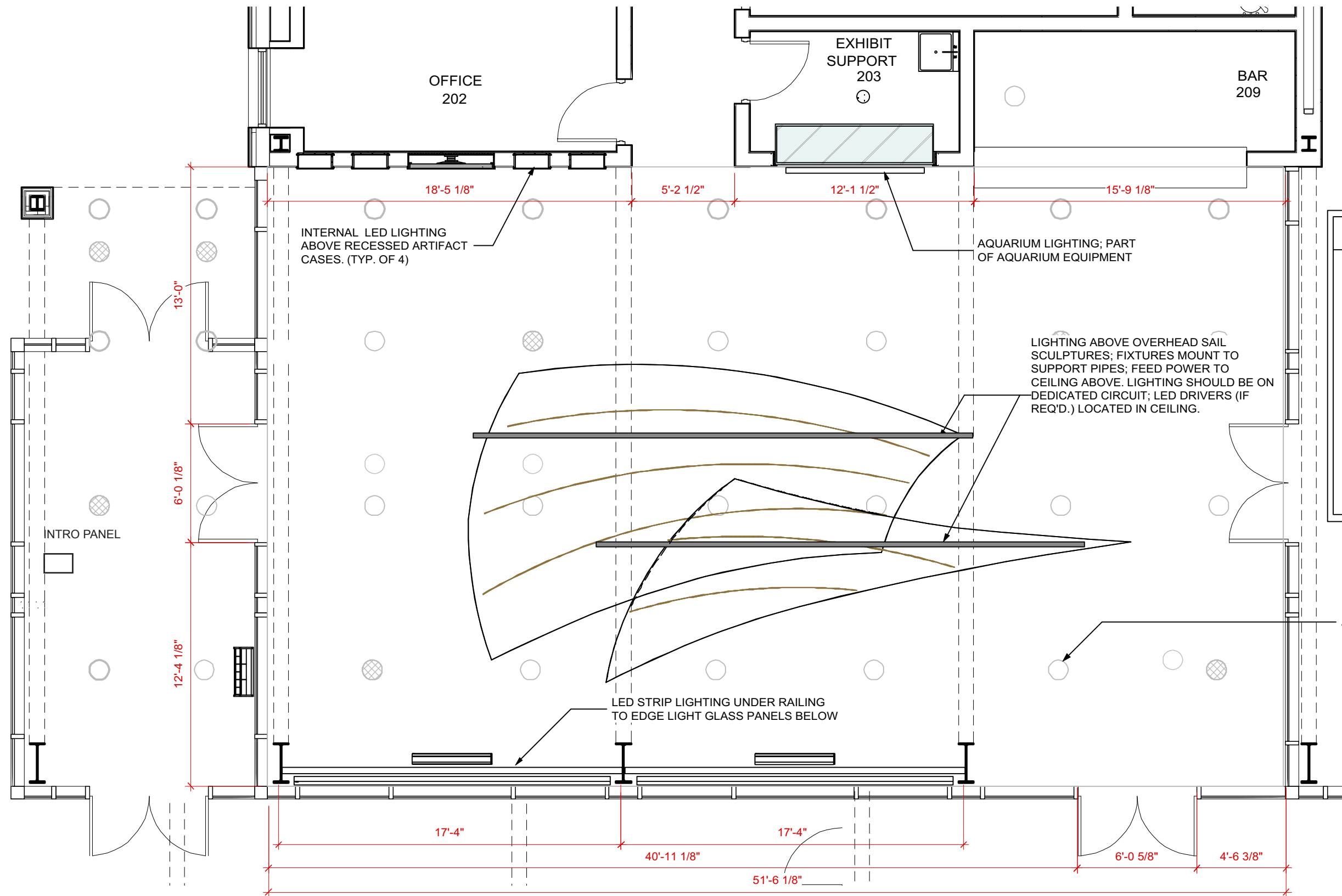
CLIENT TO DETERMINE REQUIREMENTS FOR PROGRAMMING AND SWITCHING OF LIGHTING TO MEET DAILY AND SPECIAL EVENT REQUIREMENTS.

ELECTRICAL KEY

	DUPLEX OUTLET (WALL) (110 V)
	QUAD OUTLET (WALL)(110V)
	WALL OUTLET (DATA)
	FLOOR OUTLET (DATA)
	JUNCTION BOX

4 ELECTRICAL / MECHANICAL PLAN @ Enviromental Education / Lobby
Scale: 3/16" = 1'-0"





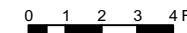
LIGHTING NOTES

ALL POWER FOR EXHIBITRY INCLUDING OVERHEAD EXHIBIT LIGHTING, GLASS WALL, AQUARIUM, MONITOR, DISPLAY CASES TO BE ON DEDICATED CIRCUITS.

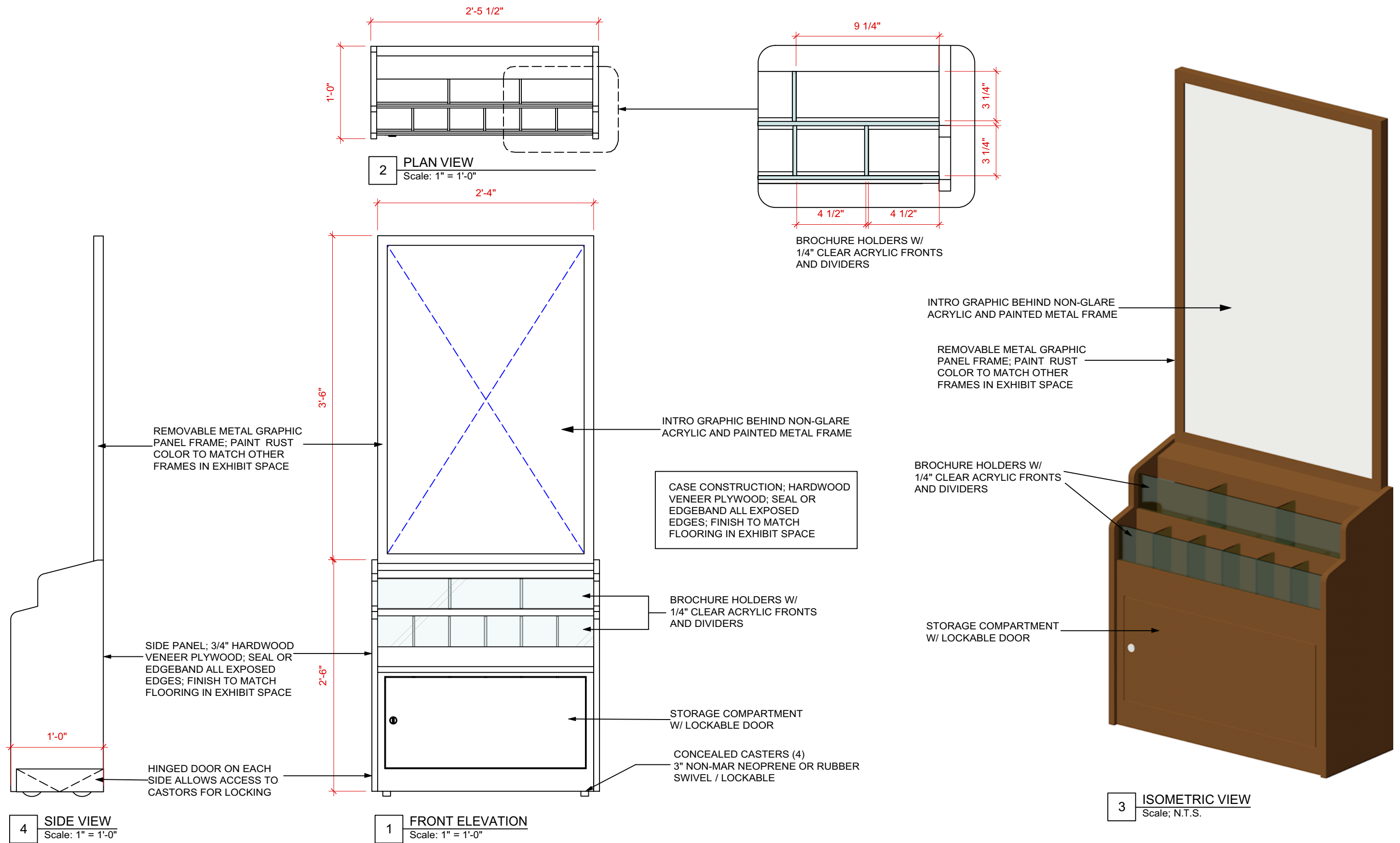
COORDINATE LOCATIONS, SPECIFICATIONS, AND QUANTITIES OF SWITCHES, DIMMERS, TIMERS, AND OTHER EXHIBIT CONTROLS WITH CLIENT, DESIGNER, AND G.C.

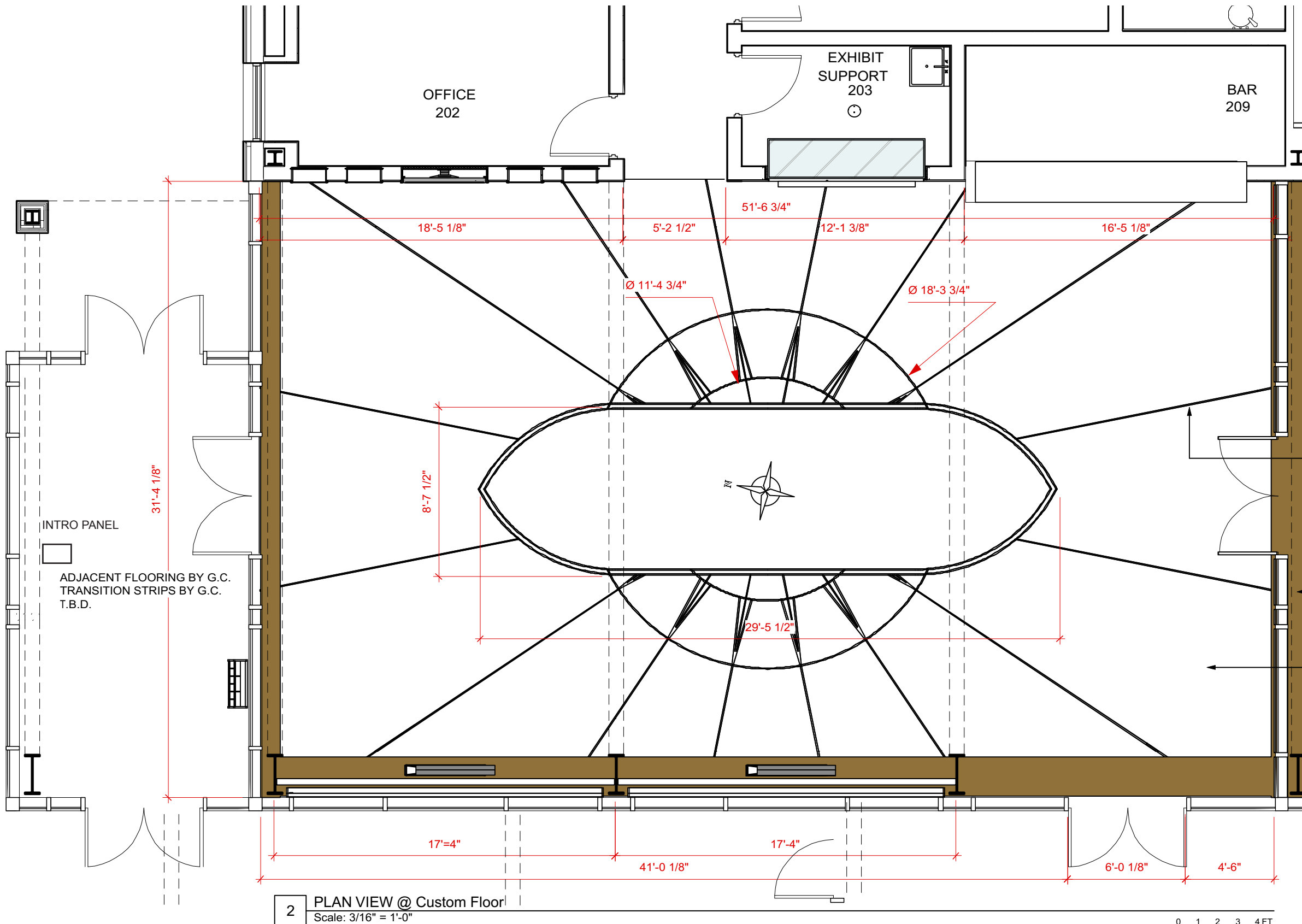
CLIENT TO DETERMINE REQUIREMENTS FOR PROGRAMMING AND SWITCHING OF LIGHTING TO MEET DAILY AND SPECIAL EVENT REQUIREMENTS.

5 LIGHTING PLAN @ Environmental Education / Lobby
 Scale: 3/16" = 1'-0"









FABRICATION NOTE:

COLOR AND SPECIES (IF POSSIBLE) OF FLOORING TO MATCH THAT IN THE MAIN VENUE.

APPROVED SAMPLES BY;

Master Care Flooring LLC.
 4000 Coolidge Ave.
 Baltimore, Md. 21229
 410-242-6401p
 410-977-0643c
 Lou@mastercarefloors.com
www.mastercarefloors.com



3/4" WIDE PAINTED BAND;
 TYPICAL FOR ALL
 COLOR: SILVER

ADJACENT FLOORING BY G.C.
 TRANSITION STRIPS BY G.C.
 T.B.D.

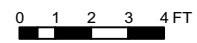
CERAMIC TILE BORDER AROUND
 3 SIDES OF ROOM (BY G.C.)

PATTERN IS DIVIDED INTO 16 EQUAL
 SEGMENTS; 22.5 DEG. EACH.

Floor Treatment

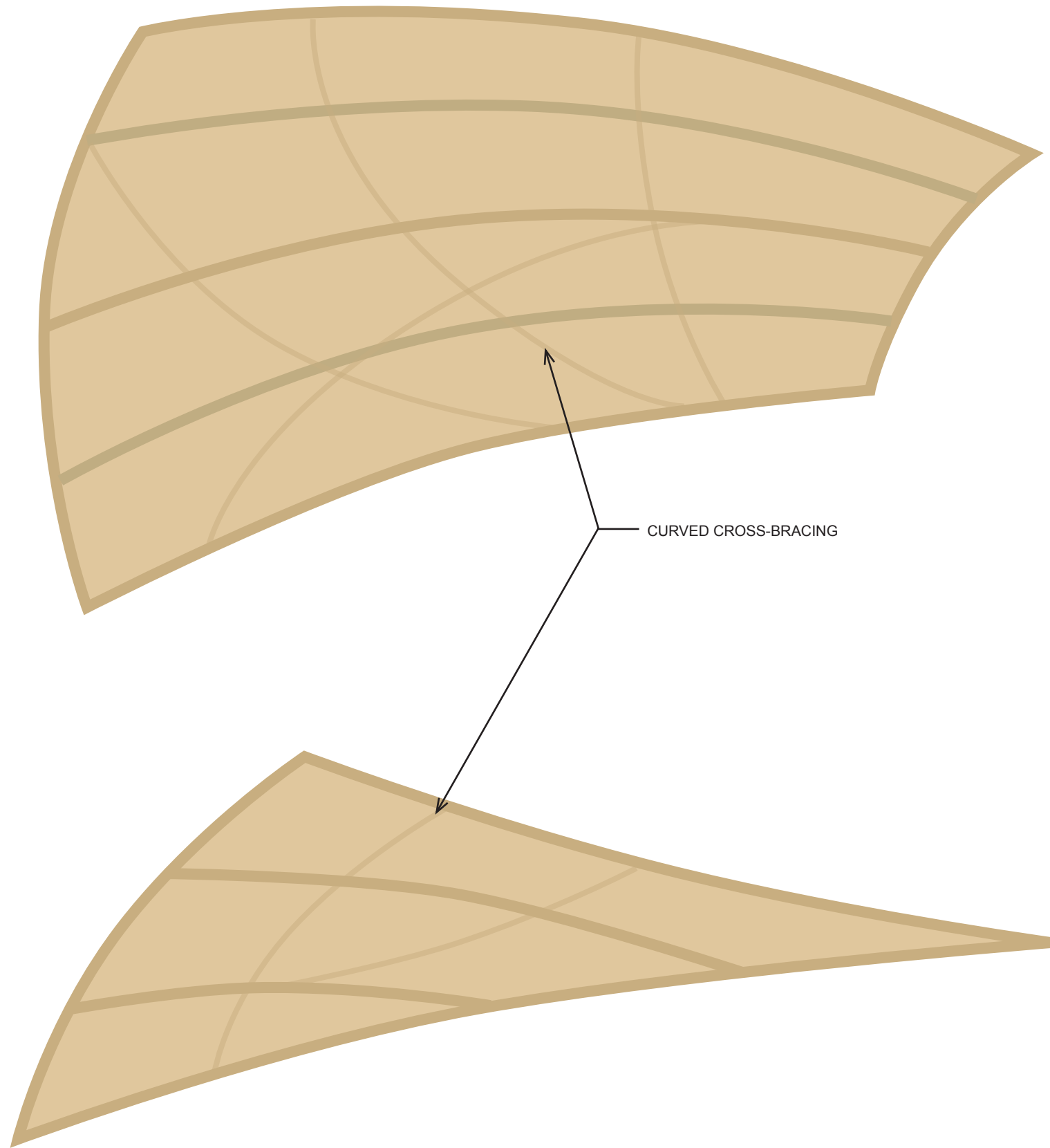
- emanating lines of a compass rose create a sense of discovery (points true north)
- central shape is actual size of John Smith's 30' x 8' "Discovery" shallop which held 15 people
- outer ring of compass is the 18' diameter of an old-growth cypress tree as noted in John Smith's diaries

2 PLAN VIEW @ Custom Floor
 Scale: 3/16" = 1'-0"





CONCEPTUAL RENDERING
See drawings for details.



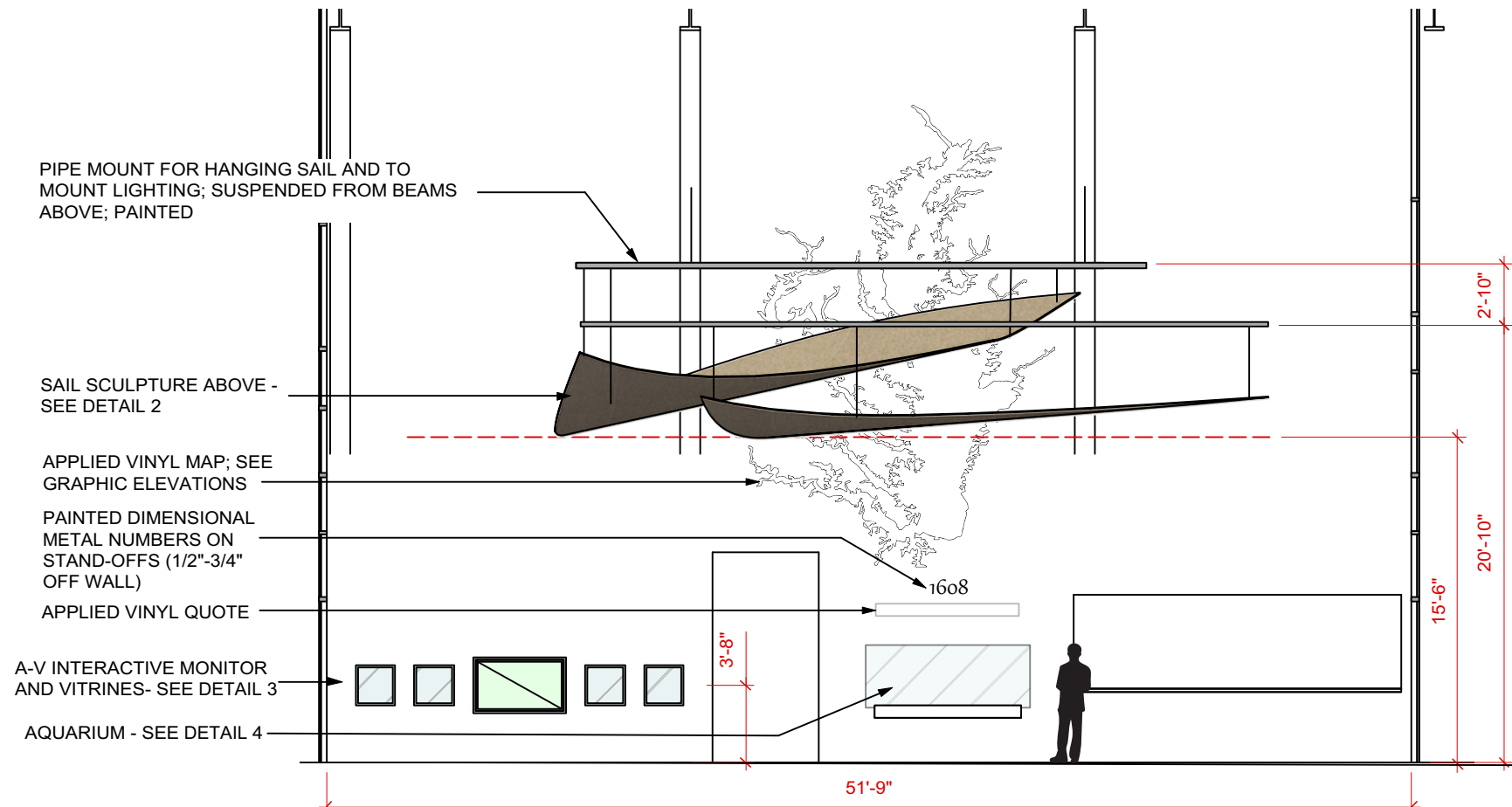
CURVED CROSS-BRACING



Reference Photo

Sampling required in combination with lighting.
Initial selection for texture and transparency:
Moss Eco Poly Duck White

Coordinate with Designer.



PIPE MOUNT FOR HANGING SAIL AND TO MOUNT LIGHTING; SUSPENDED FROM BEAMS ABOVE; PAINTED

SAIL SCULPTURE ABOVE - SEE DETAIL 2

APPLIED VINYL MAP; SEE GRAPHIC ELEVATIONS

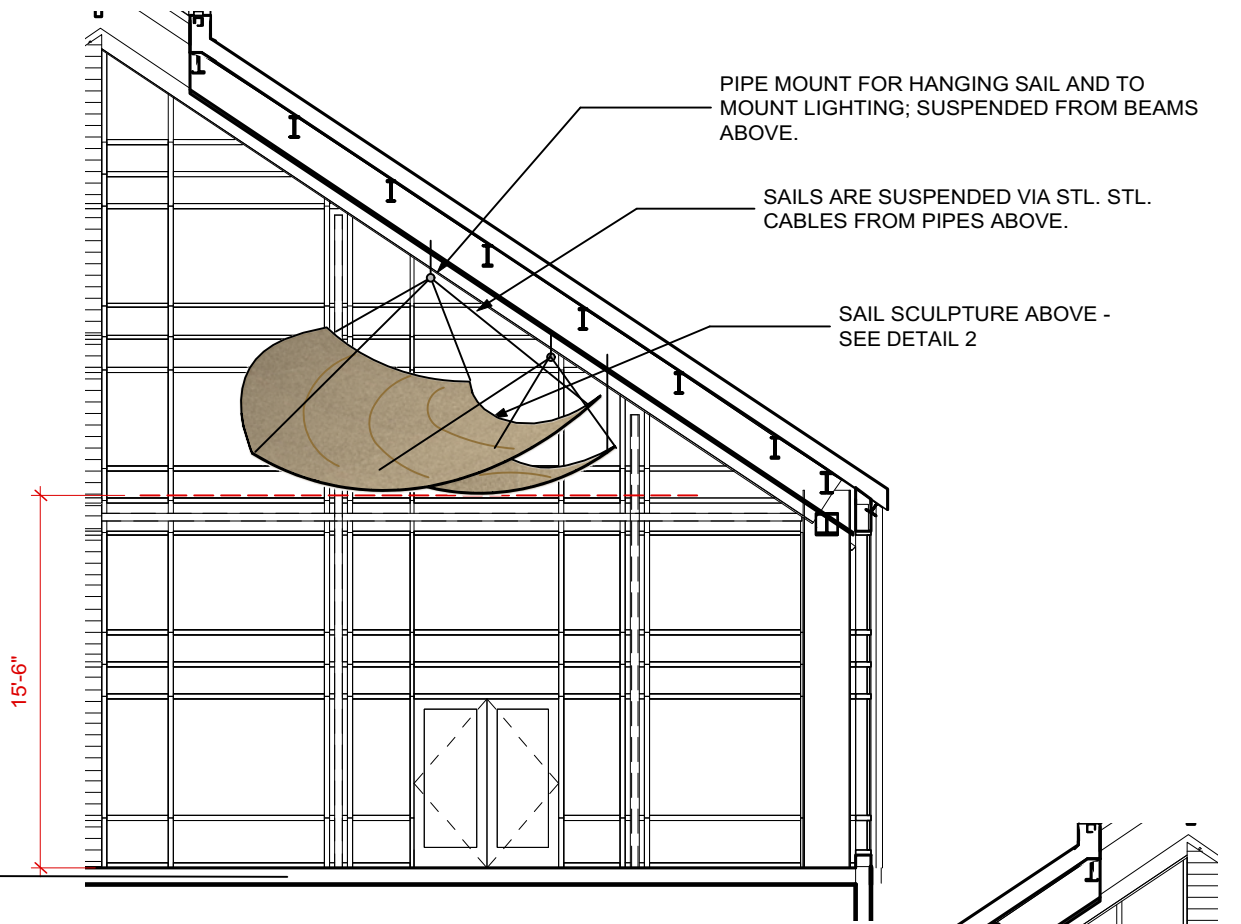
PAINTED DIMENSIONAL METAL NUMBERS ON STAND-OFFS (1/2"-3/4" OFF WALL)

APPLIED VINYL QUOTE

A-V INTERACTIVE MONITOR AND VITRINES- SEE DETAIL 3

AQUARIUM - SEE DETAIL 4

1 EAST ELEVATION
Scale: 1/8" = 1'-0"

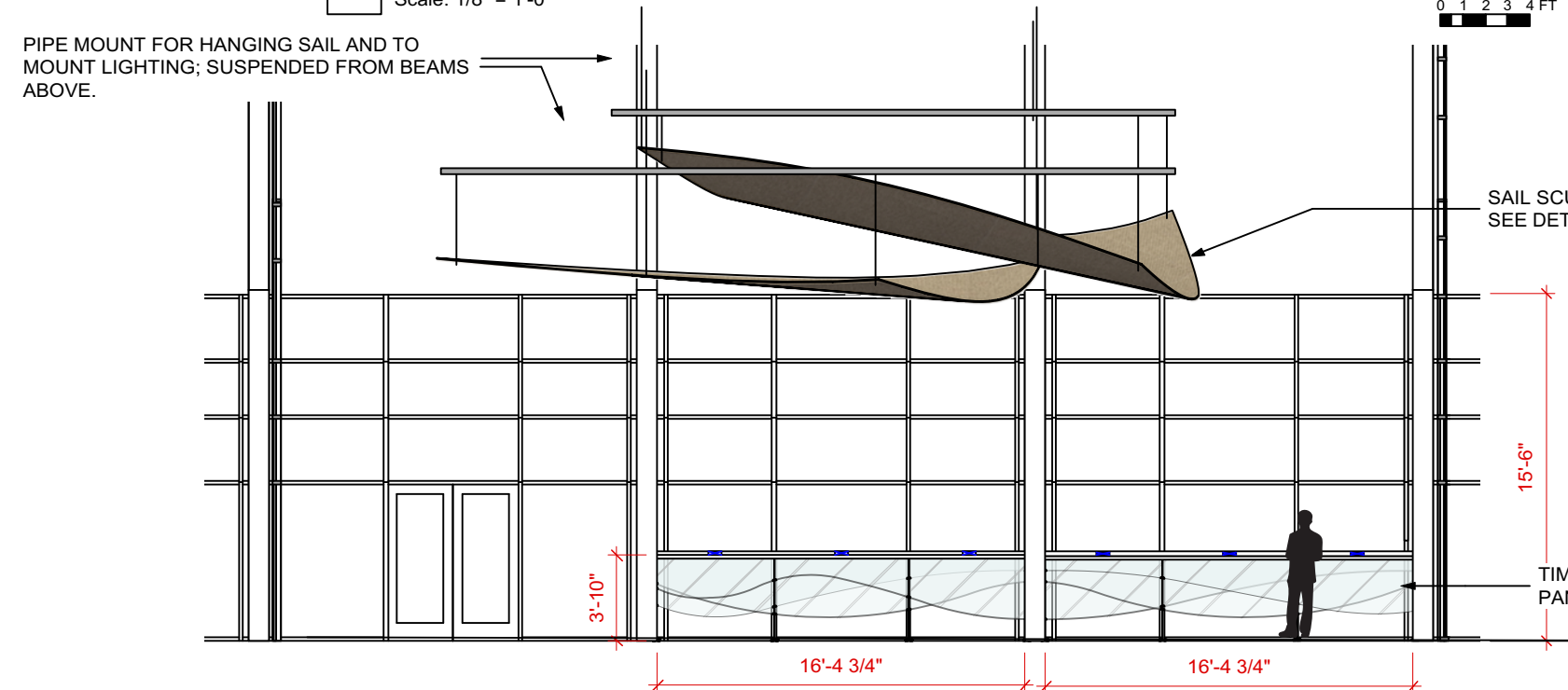


PIPE MOUNT FOR HANGING SAIL AND TO MOUNT LIGHTING; SUSPENDED FROM BEAMS ABOVE.

SAILS ARE SUSPENDED VIA STL. STL. CABLES FROM PIPES ABOVE.

SAIL SCULPTURE ABOVE - SEE DETAIL 2

2 SOUTH ELEVATION
Scale: 1/8" = 1'-0"

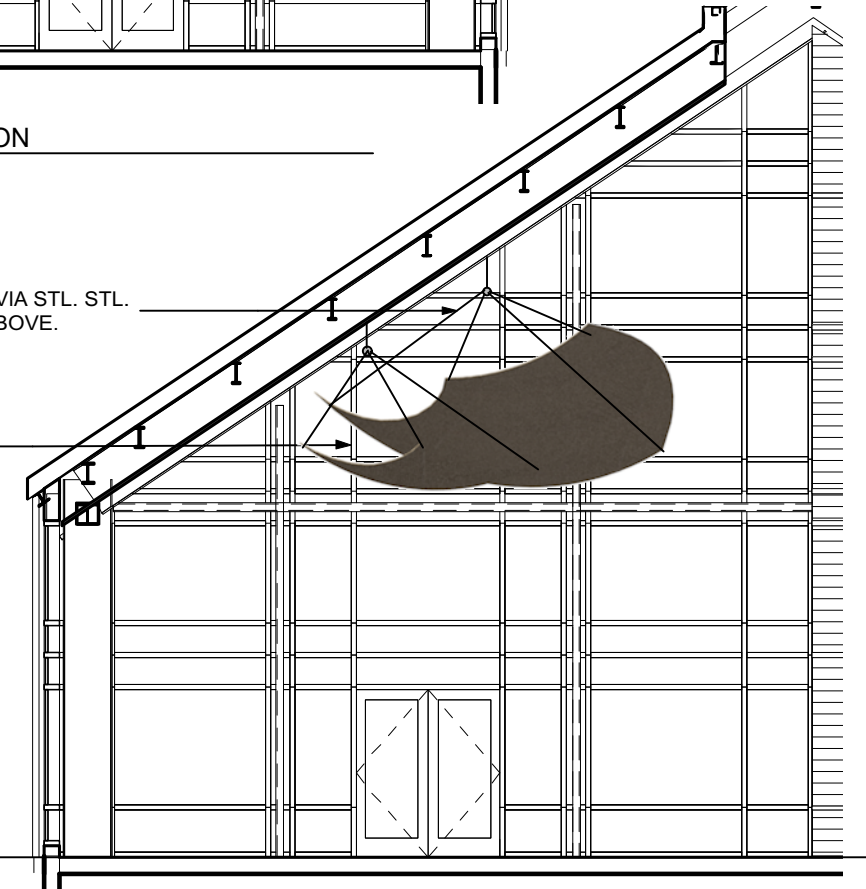


PIPE MOUNT FOR HANGING SAIL AND TO MOUNT LIGHTING; SUSPENDED FROM BEAMS ABOVE.

SAIL SCULPTURE ABOVE - SEE DETAIL 2

TIMELINE; ILLUMINATED GLASS PANELS - SEE DETAIL 1

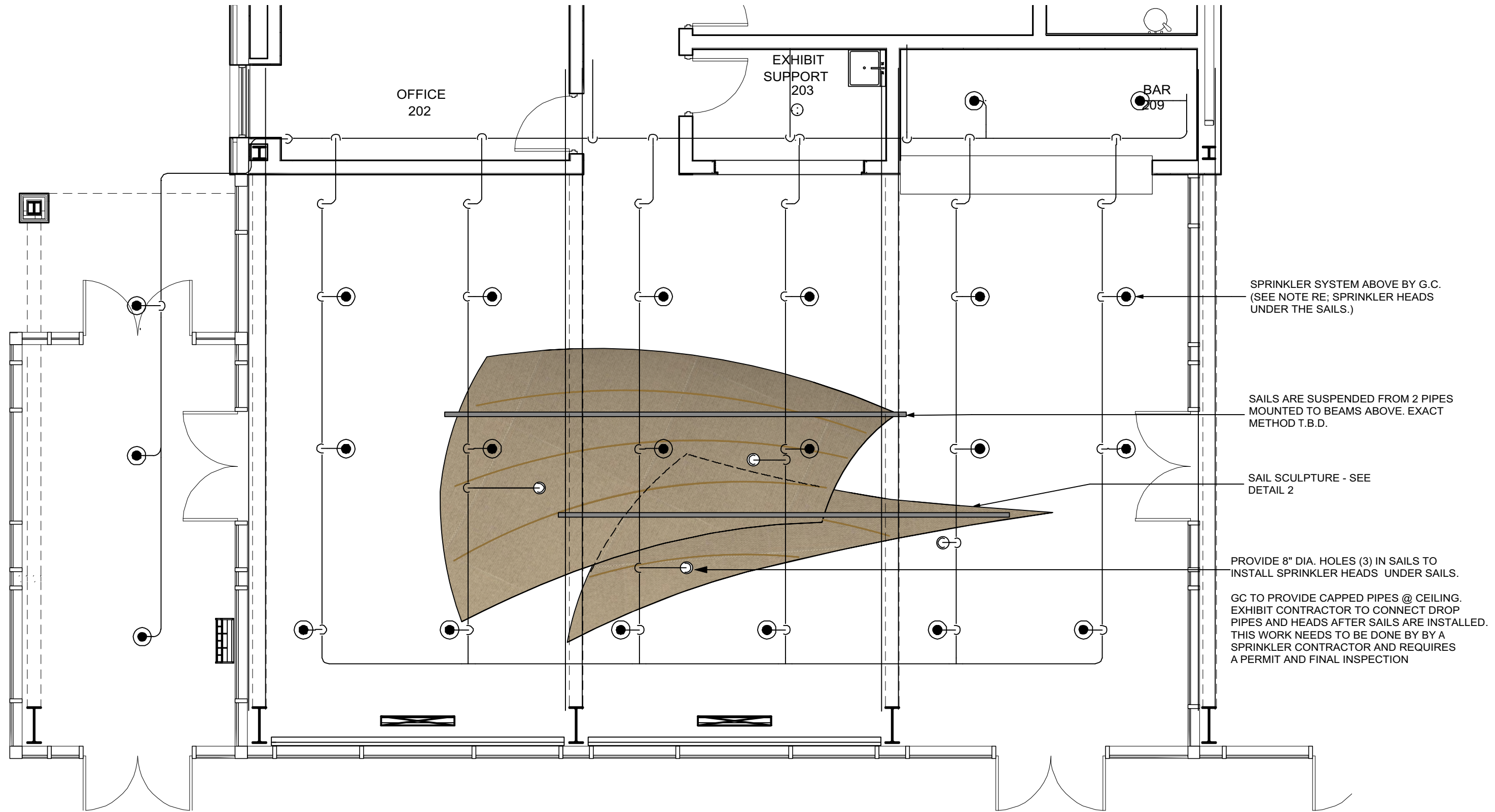
3 WEST ELEVATION
Scale: 1/8" = 1'-0"



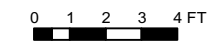
SAILS ARE SUSPENDED VIA STL. STL. CABLES FROM BEAMS ABOVE.

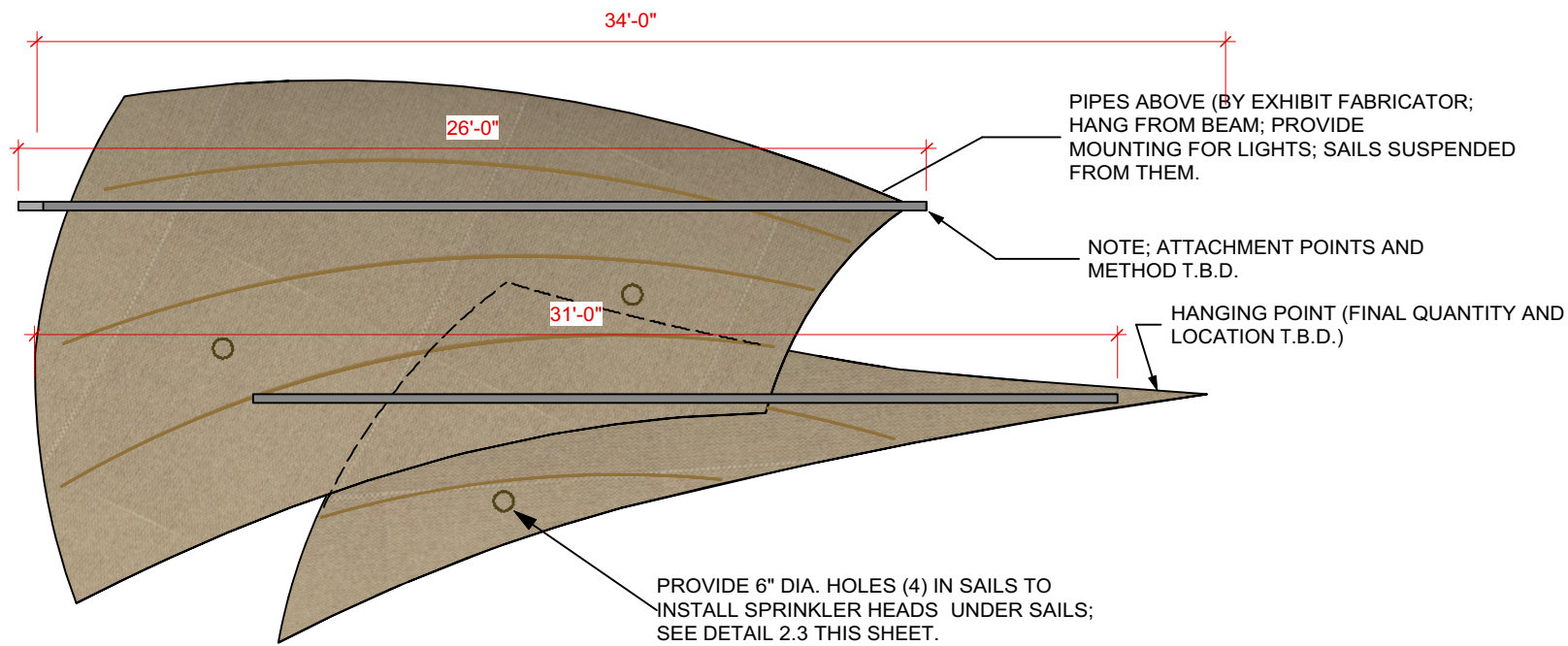
SAIL SCULPTURE ABOVE - SEE DETAIL 2

4 NORTH ELEVATION
Scale: 1/8" = 1'-0"

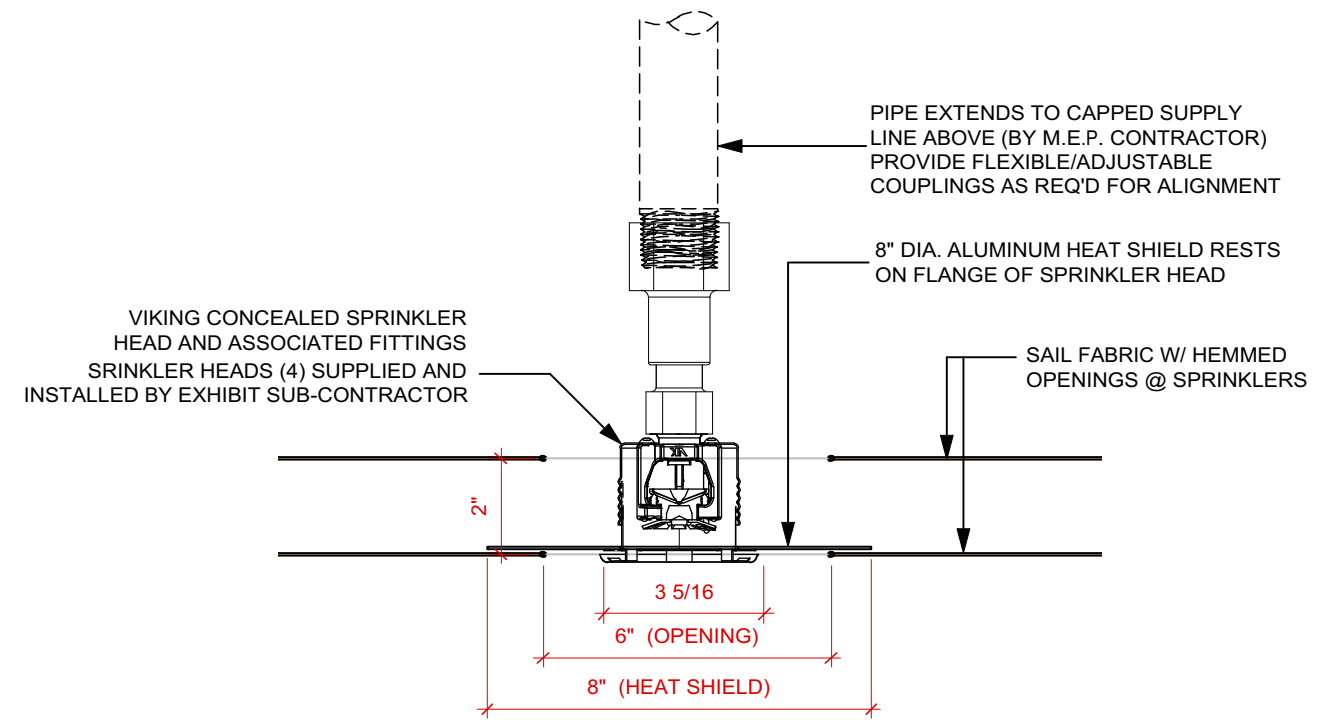


3 REFLECTED CEILING PLAN @ Enviromental Education / Lobby
 Scale: 3/16" = 1'-0"

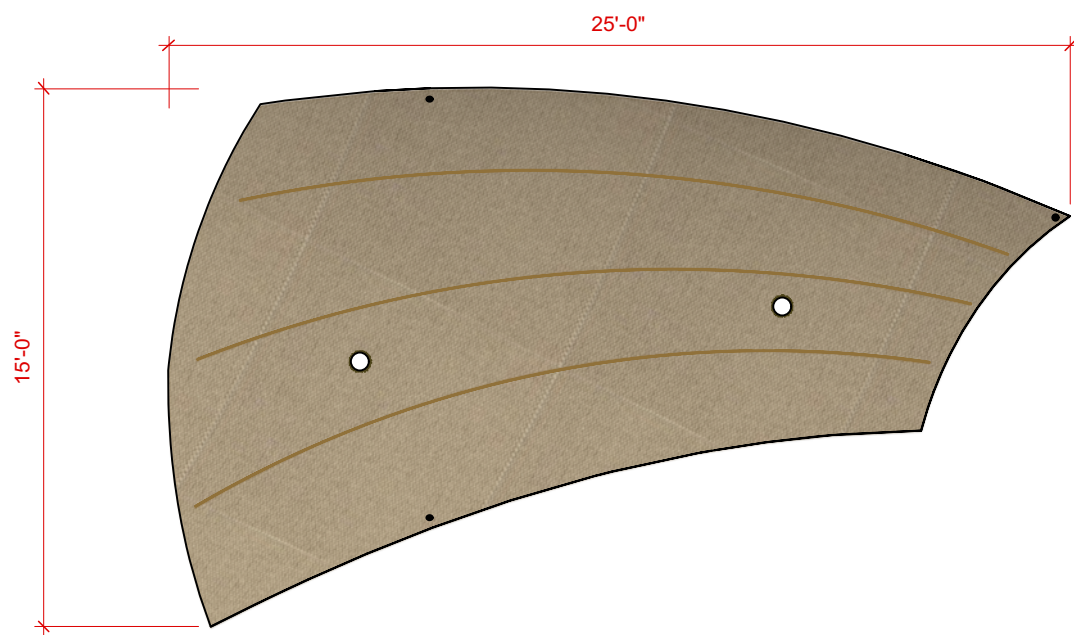




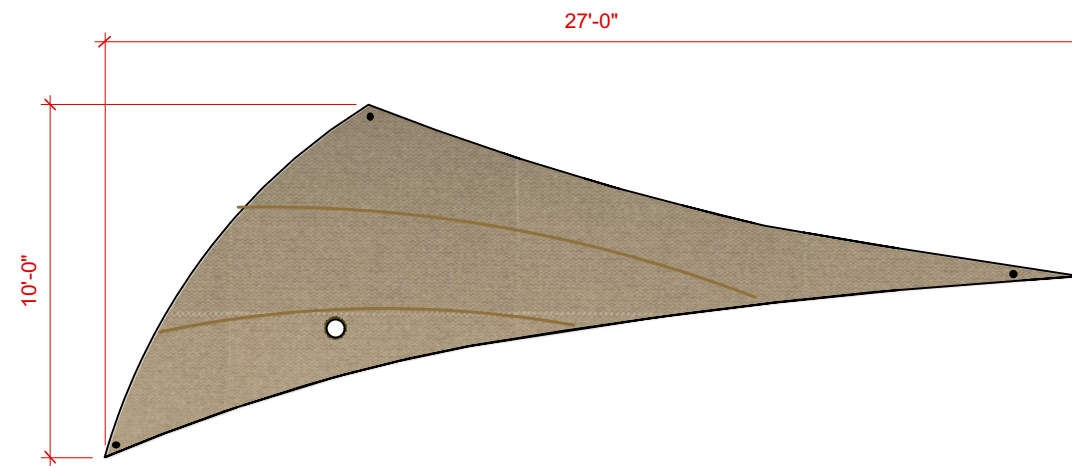
2 PLAN VIEW @ Overhead Sculpture
Scale: 3/16" = 1'-0"



2.3 DETAIL @ Sprinkler Head in Sail
Scale: 3" = 1'-0"



2.1 PLAN VIEW @ Upper Panel
Scale: 3/16" = 1'-0"



2.2 PLAN VIEW @ Lower Panel
Scale: 3/16" = 1'-0"

FABRICATION NOTE:

PANELS ARE MOSS STRUCTURES W/ FRAMES AND STIFFNERS AS REQUIRED TO MAINTAIN SHAPE; STITCHING AND FABRIC TO RESEMBLE PERIOD SAILS. HOLES IN FABRIC PROVIDED FOR SPRINKLER HEADS AS REQ'D.

MOSS | RETAIL & ENVIRONMENTS
C 847-271-1758
D 770-505-4172
www.mossretail.com
2600 Elmhurst Road Elk Grove Village IL 60007

(X) EYEBOLT LOCATIONS (RN) RIV-NUT

NOTES:

2" TUBE PERIMETER FRAME

1.25" TUBE 1/2" TUBE SPREADERS

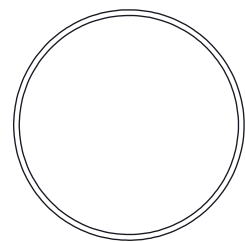
[0] CLIPS

[SEE LABELS] HANGPOINTS

SKIN CONSTRUCTION: PILLOWCASE
CLEANFIT

FABRIC TYPE: MOSS ECO POLY DUCK WHITE

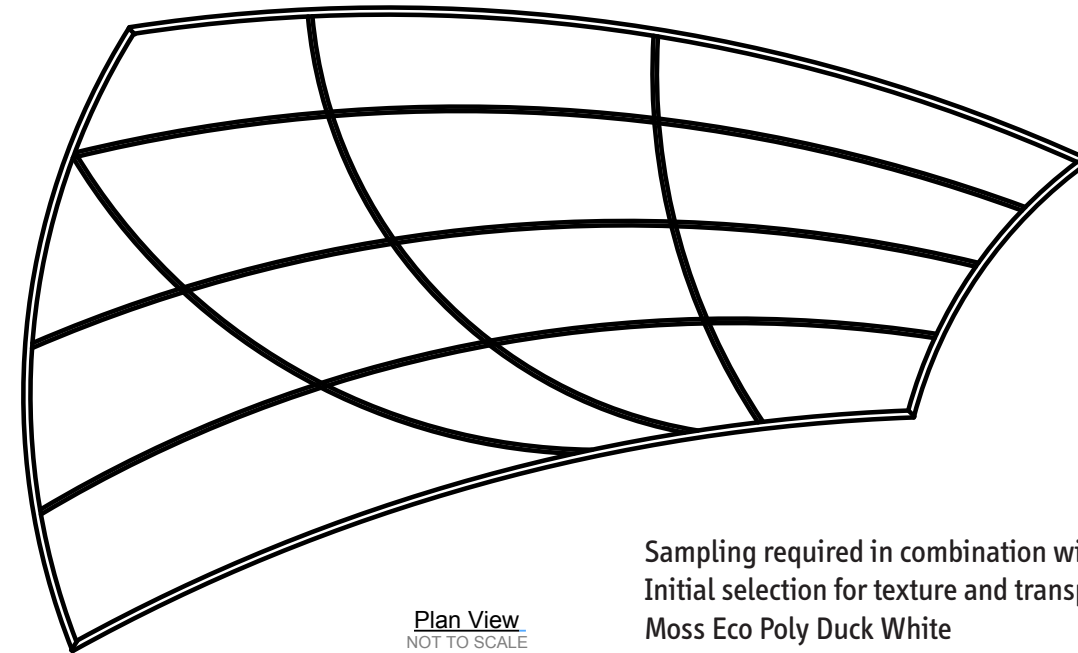
LINER: TBD



2.00" Tube
4000161
PERIMETER RAIL

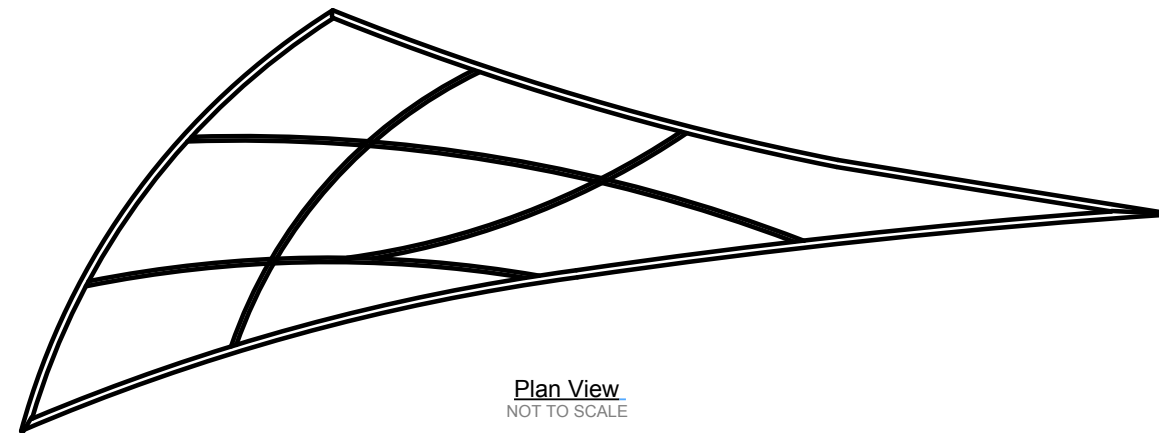


1/2" Tube
4000157
SPREADER



Sampling required in combination with lighting.
Initial selection for texture and transparency:
Moss Eco Poly Duck White

Coordinate with Designer.



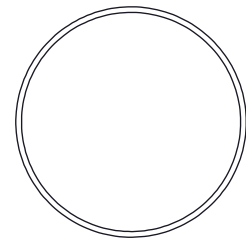
USE THIS DRAWING FOR FINAL
LAYOUT AND DESIGN

USE THIS DRAWING FOR
SIZES OF SAILS ONLY

(X) EYEBOLT LOCATIONS (RN) RIV-NUT

NOTES:

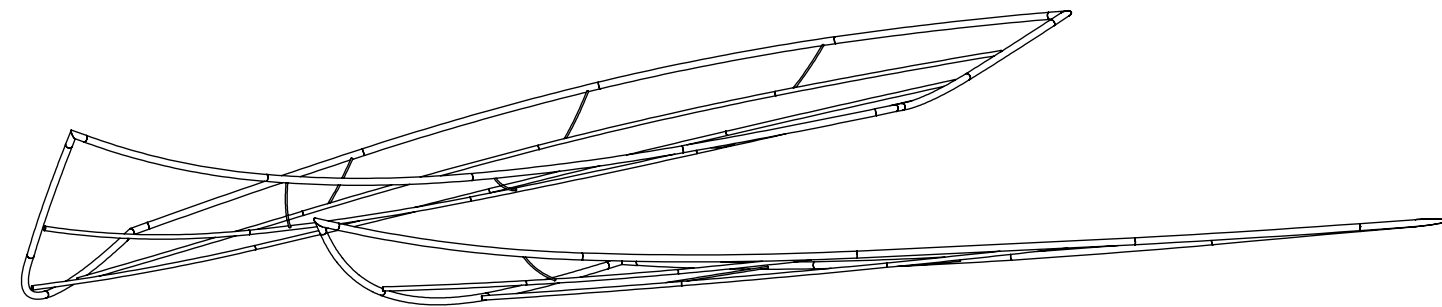
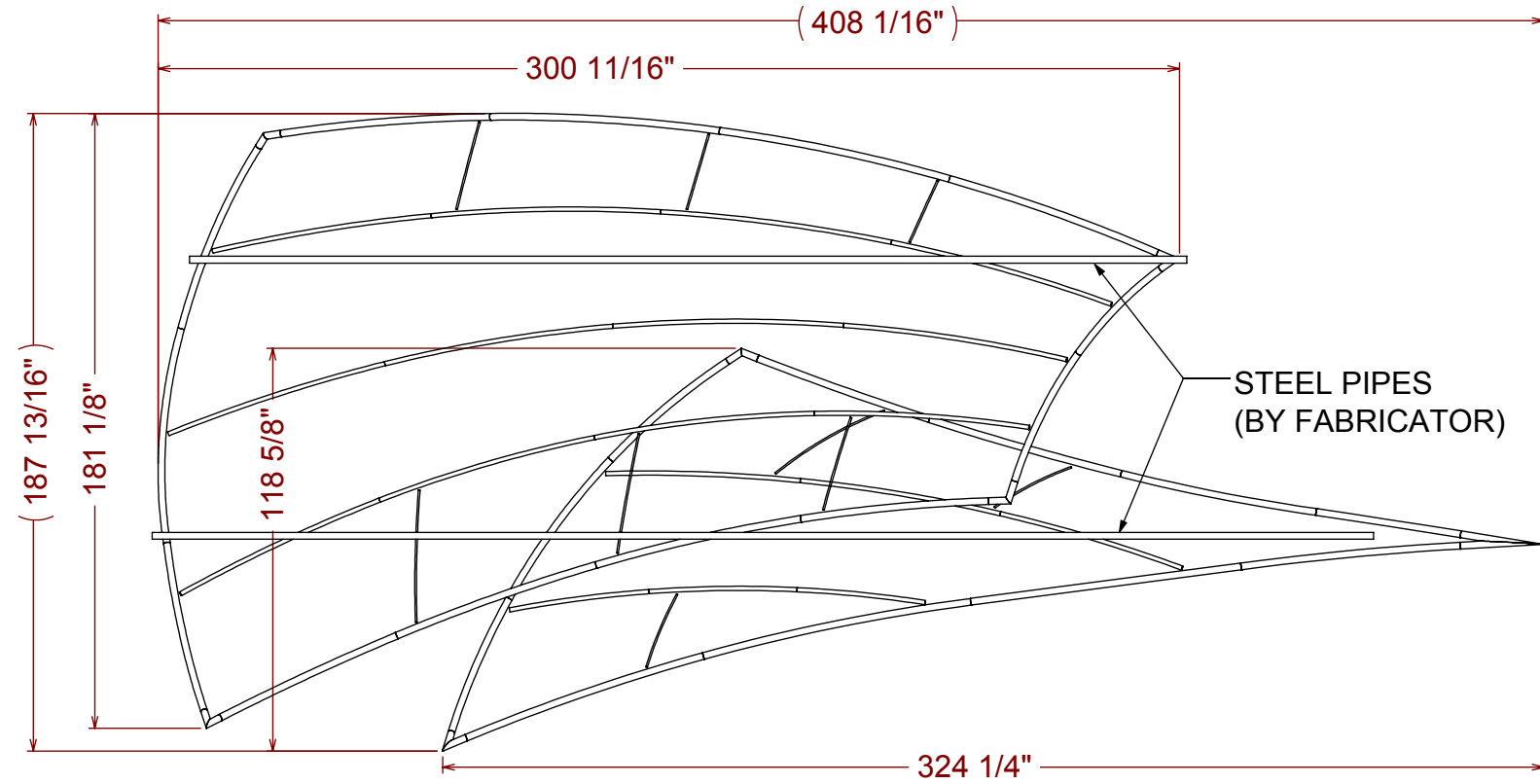
- 2" TUBE PERIMETER FRAME
- 1.25" TUBE / 1/2" TUBE SPREADERS
- [0] CLIPS
- [SEE LABELS] HANGPOINTS
- SKIN CONSTRUCTION: PILLOWCASE CLEANFIT
- FABRIC TYPE: MOSS ECO POLY DUCK WHITE
- LINER: TBD



2.00" Tube
4000161
PERIMETER RAIL



1/2" Tube
4000157
SPREADER



⊗ EYEBOLT LOCATIONS ⊞ RIV-NUT

NOTES:

2" TUBE PERIMETER FRAME

1.25" TUBE / 1/2" TUBE SPREADERS

[0] CLIPS

[SEE LABELS] HANGPOINTS

SKIN CONSTRUCTION: PILLOWCASE CLEANFIT

FABRIC TYP: MOSS ECO POLY DUCK WHITE

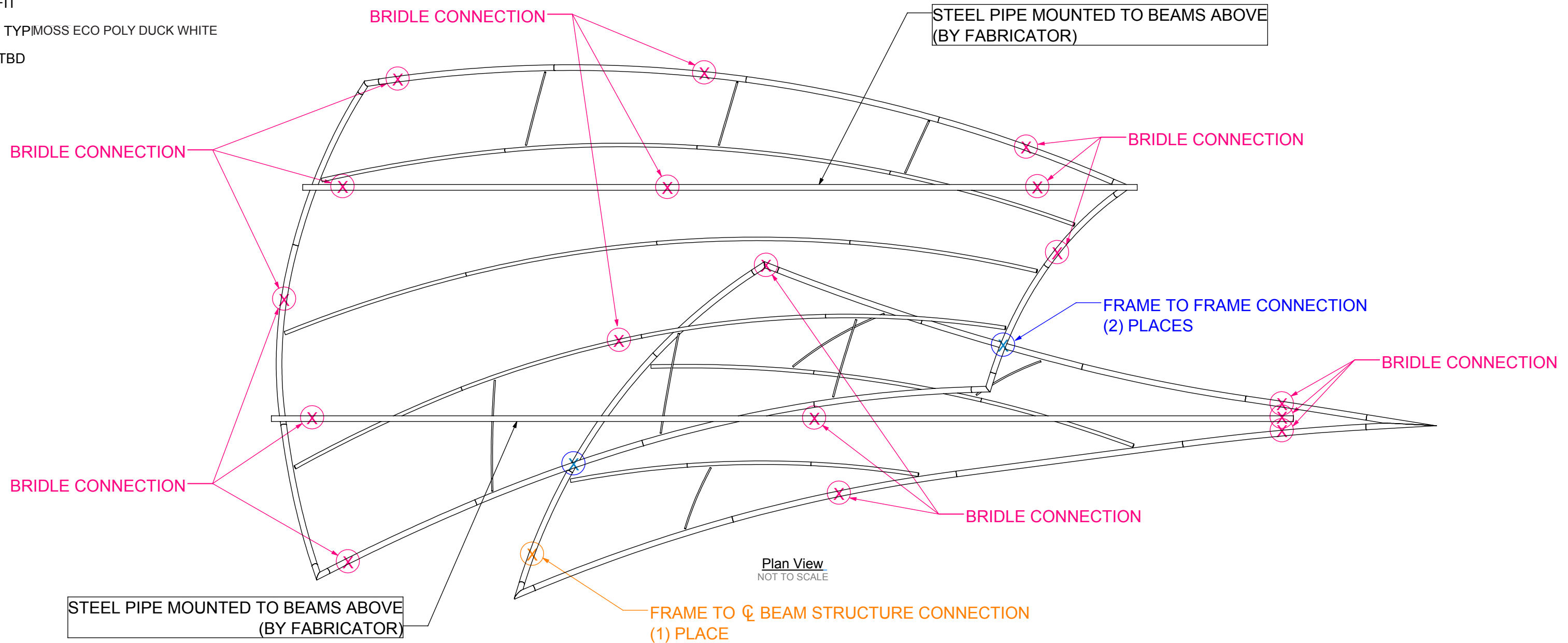
LINER: TBD

⊗ = FRAME TO ϕ BEAM STRUCTURE CONNECTION VIA ADJUSTABLE CABLE

⊞ = FRAME TO STEEL PIPE CONNECTION VIA ADJUSTABLE CABLE

⊗ = FRAME TO FRAME CONNECTION VIA CABLE

USE THIS DRAWING FOR HANGING POINTS ONLY



1608 OVERVIEW

**John Smith sailing down river
John Smith meeting Dogue Indians
Dogue Indians living along river's edge
flora/fauna**

First Chesapeake Voyage

JUNE 18-JULY 16 - EXPLORATION OF PATAWOMECK (POTOMAC RIVER) WITH STOPS AT NATIVE TOWNS.

"The fourth river is called Patowomeke and is 6 or 7 miles in breadth. It is navigable 140 miles, and fed as the rest with many sweet rivers and springs, which fall from the bordering hills....The river is inhabited on both sides....Moyawance with 100 [able men]."

- Captain John Smith, 1612

Smith's crew explores the Patowomek (Potomac) River, stopping at native towns, where they found "like encounters [hostile at first]... at Patowomek, Cecocawonee, and diverse other places, but at Moyaoones, Nacotchtant and Toags the people did their best to content us."

"Having gone so high as we could with the boat [Little Falls of the Potomac] we met divers savages in canoes well laden with flesh of bears, deer, and other beasts, whereof we had part." The party proceeds on foot to Great Falls, searching in vain for precious minerals. Later the local Patowomek chief provides guides to take them up Aquia Creek to show the mining of matchqueon. This black ore with silvery grains is the source of a silvery paint Smith calls antimony, a body decorative valued by the natives but of no interest to Europeans.

While returning downriver to the mouth of the Patowomek (Potomac) "we found in divers places that abundance of fish lying so thick with their heads above the water as for want of nets (our barge driving amongst them) we attempted to catch them with a frying pan, but we found it a bad instrument to catch fish with: Neither better fish, more plenty, nor more variety for small fish had any of us ever seen in any place so swimming in the water than in the Bay of Chesapeack, but they are not to be caught with frying pans!"

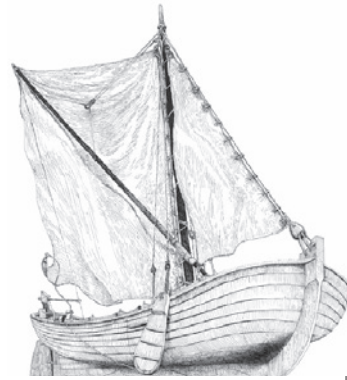
The explorers are ambushed at Nomini Creek. Smith's men fire their guns at a low angle to skip the shot across the water, and "the echo of the woods so amazed them as down went their bows and arrows."

JUST OUTSIDE THE POTOMAC:

Near the mouth of the Rapphannock, the crew "spied many fishes lurking in the weeds" and began catching them by nailing them to the ground with their swords. As Smith reaches to take one from his sword, he is impaled by "a most poisoned sting of two or three inches long, bearded like a saw on each side, which she struck into the wrist of his arm near an inch and a half.... The torment was instantly so extreme that in four hours had so swollen his hand, arm, and shoulder we all with much sorrow concluded his funeral and prepared his grave ... as himself directed." The doctor on board applies "precious oil," and by night Smith's pain is so improved that he eats the fish for supper. "We called the island 'Stingray Isle' after the name of the fish"—today's Stingray Point.



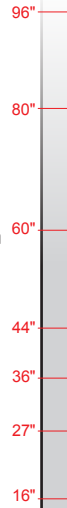
CYPRESS STANDS, LARGE OAK, ELM, CHESTNUT TREES
WHAT OTHER PLANTS?



CAPTAIN JOHN SMITH'S SHALLOP



CAPTAIN JOHN SMITH



large trees, deer, bear

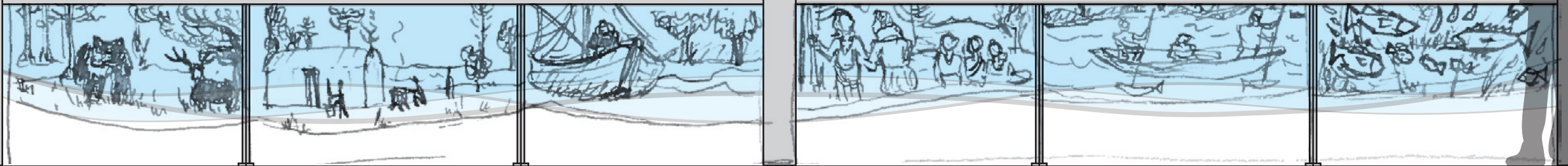
Dogue Indians living along river's edge

John Smith sailing down river, fishing

John Smith meeting Dogue Indians

Dogue Indians Fishing in Canoe

Abundant fish



CAPTION: ETCHING 01.01

CAPTION: ETCHING 02.01

CAPTION: ETCHING 03.01

CAPTION: ETCHING 04.01

CAPTION: ETCHING 05.01

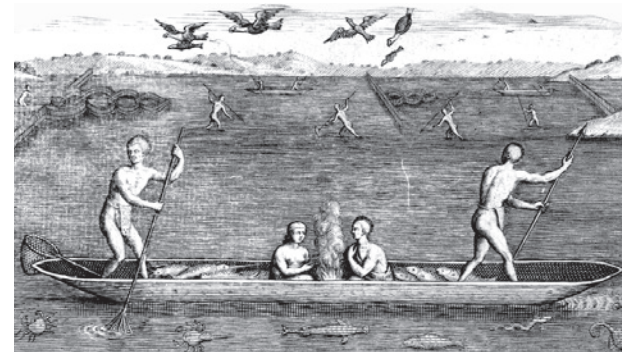
CAPTION: ETCHING 06.01



DOGUE INDIAN LONGHOUSES

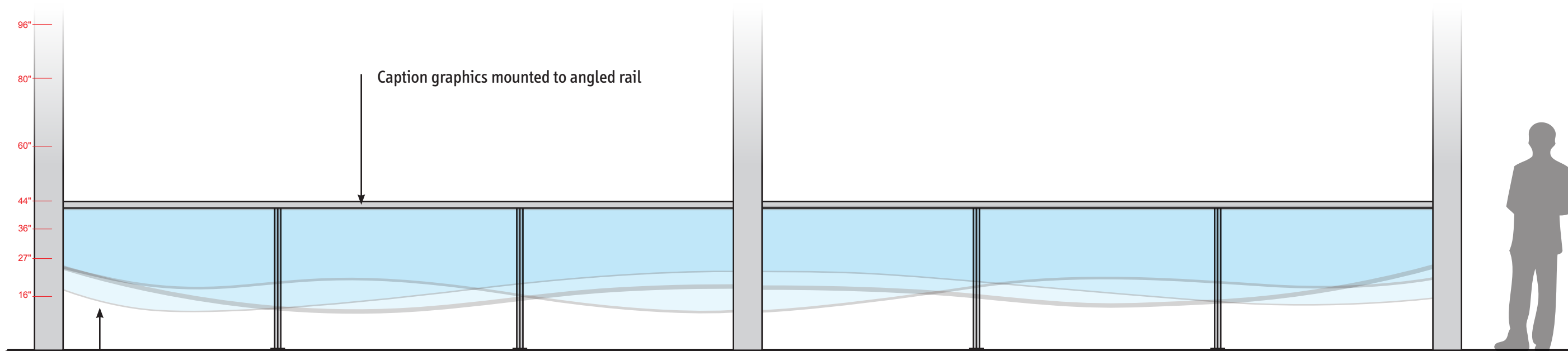


DOGUE INDIANS, FISHING IN CANOE



SPECIES TO HIGHLIGHT TBD
Smith's journals are filled with descriptions of the bounty: "In sommer no place affordeth more plenty of sturgeon, nor in winter more abundance of fowle...." Smith wrote. "Neither better fish, more plenty, nor more variety for small fish had any of us ever seen in any place... than in the Bay of Chesapeack."

Smith notes "many shoals lying in the entrances [where] we spied many fishes lurking in the reeds."



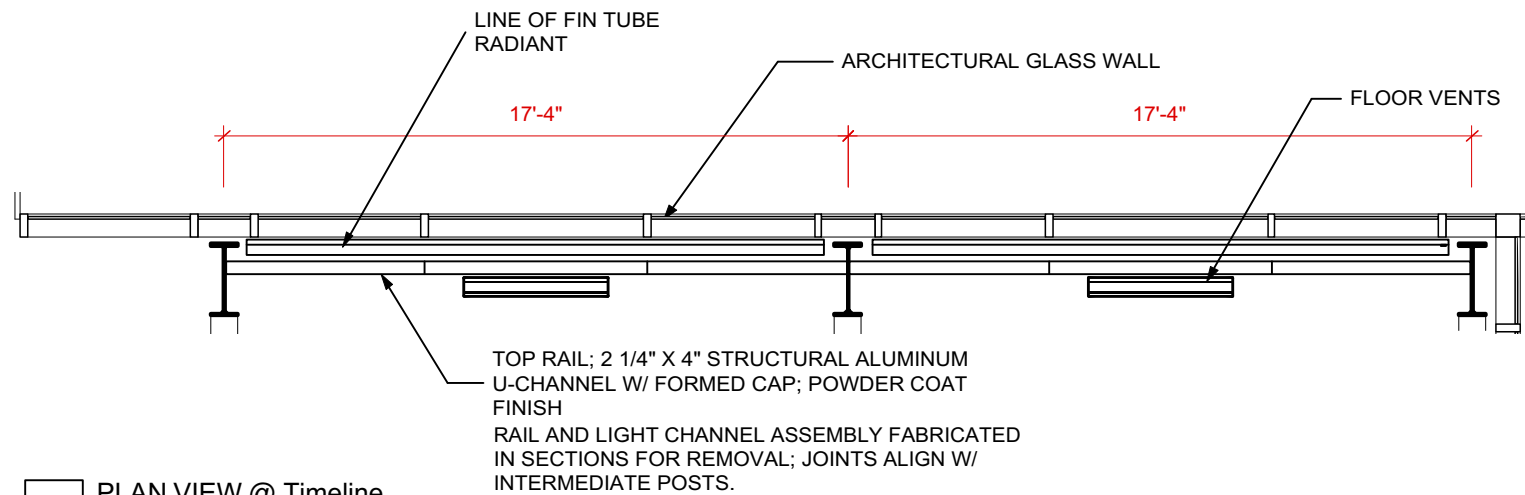
Layer 1- 3/8" GAR Clear Acrylic:
Laser etched graphics on back surface
Vendor: SmartDesign

Layer 2- 3/8" Solid Color 3Form Acrylic
Coordinate samples and specifications with
designer

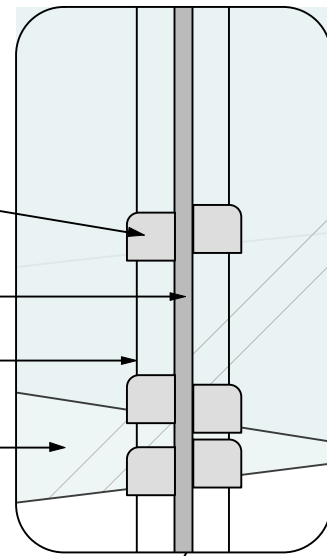
Layer 3- 3/8" 3Form Acrylic

General Note:

1. Glass panels need to be removable or accessible for cleaning
2. Exhibit will need to be locally turned on/off and dimmable



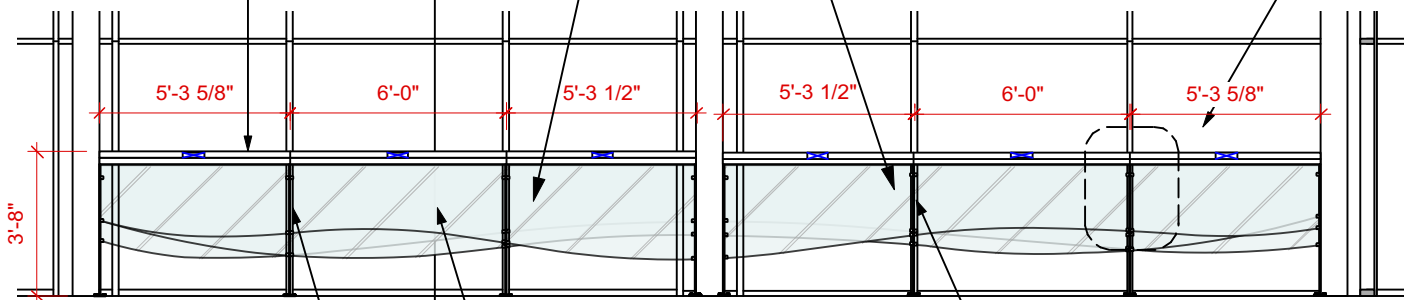
1 PLAN VIEW @ Timeline
Scale: 3/16" = 1'-0"



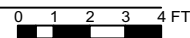
RAIL AND LIGHT CHANNEL ASSEMBLIES FABRICATED IN SECTIONS FOR REMOVAL; JOINTS ALIGN W/ INTERMEDIATE POSTS.

1.2

NOTE: ACRYLIC PROFILES FOR REFERENCE ONLY; SEE GRAPHIC PACKAGE FOR EXACT SHAPES.

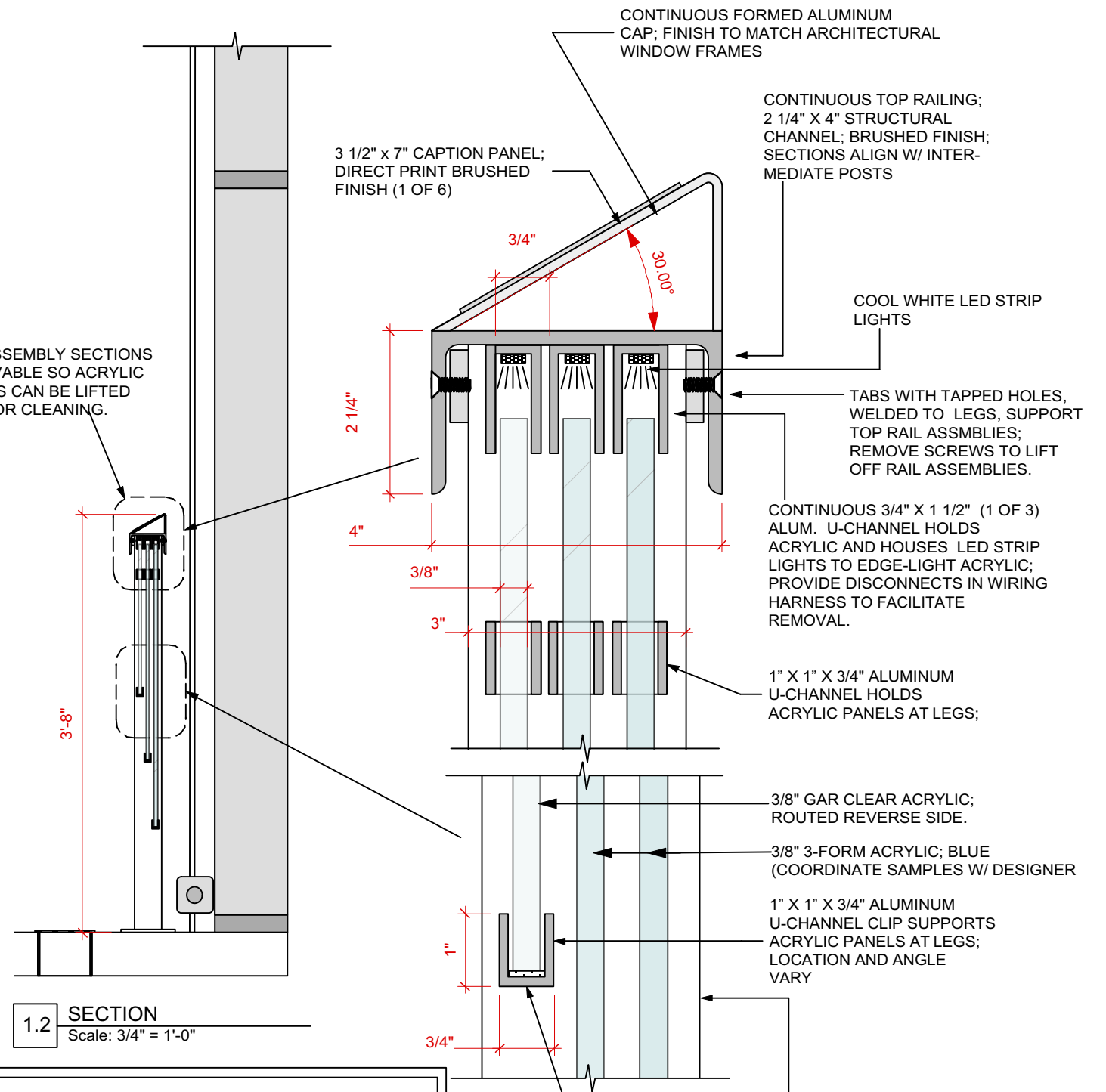


1.1 ELEVATION @ Timeline
Scale: 3/16" = 1'-0"



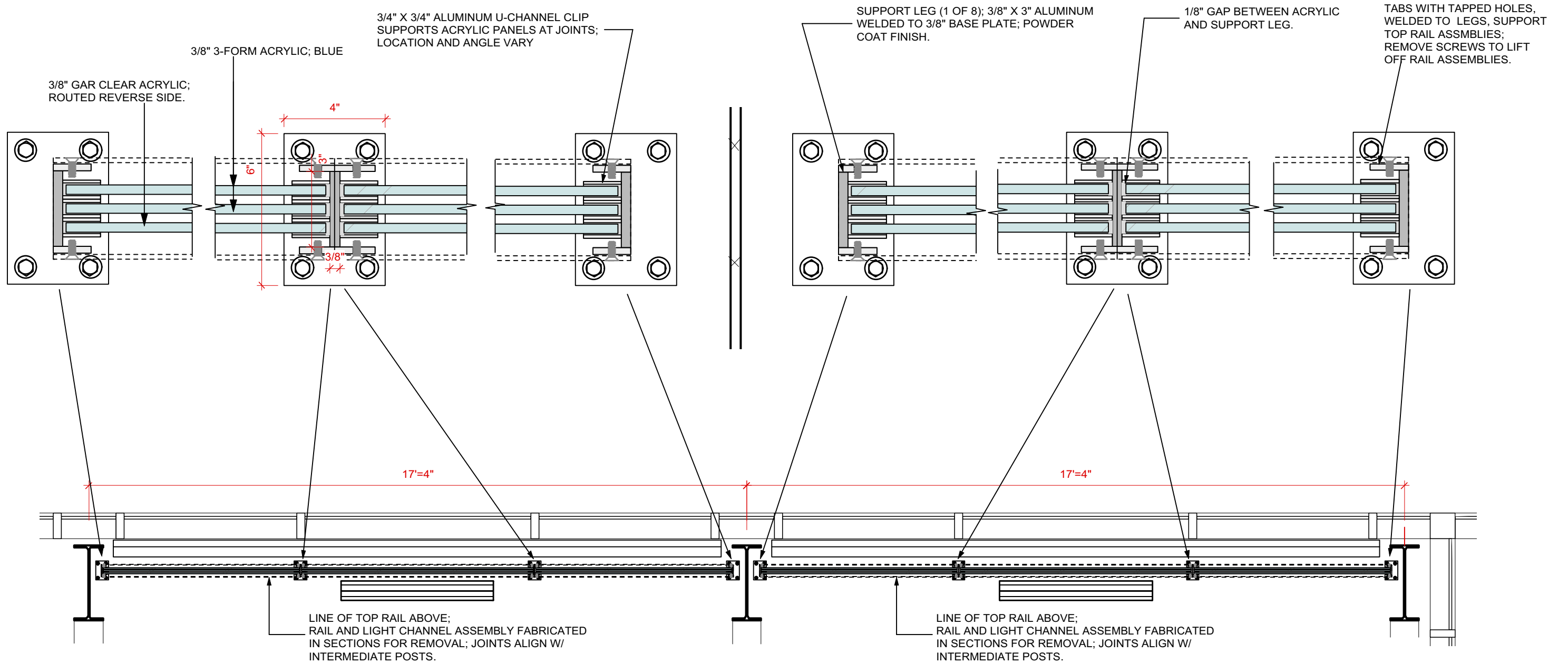
TOP ASSEMBLY SECTIONS REMOVABLE SO ACRYLIC PANELS CAN BE LIFTED OUT FOR CLEANING.

1.2 SECTION
Scale: 3/4" = 1'-0"

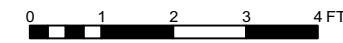


ELECTRICAL NOTES;

- LED EDGE LIGHTING TO BE ON A SEPARATE CIRCUIT W/ DEDICATED SWITCH AND DIMMER.
- WIRING HARNESES TO HAVE QUICK-DISCONNECTS AT JOINTS TO FACILITATE REMOVAL OF TOP RAILS.
- LOCATION OF CONTROLS T.B.D. COORDINATE W/ CLIENT AND ARCHITECT.



1.3 PLAN SECTION @ Glass Wall
Scale: 3/8" = 1'-0"



RECOMMENDED SUPPLIER
For Glass Etching

Shelly McMahan
Smart Design, Inc.
833 Highams Court
Woodbridge, VA 22191
T 703-492-2764

ELECTRICAL NOTES;

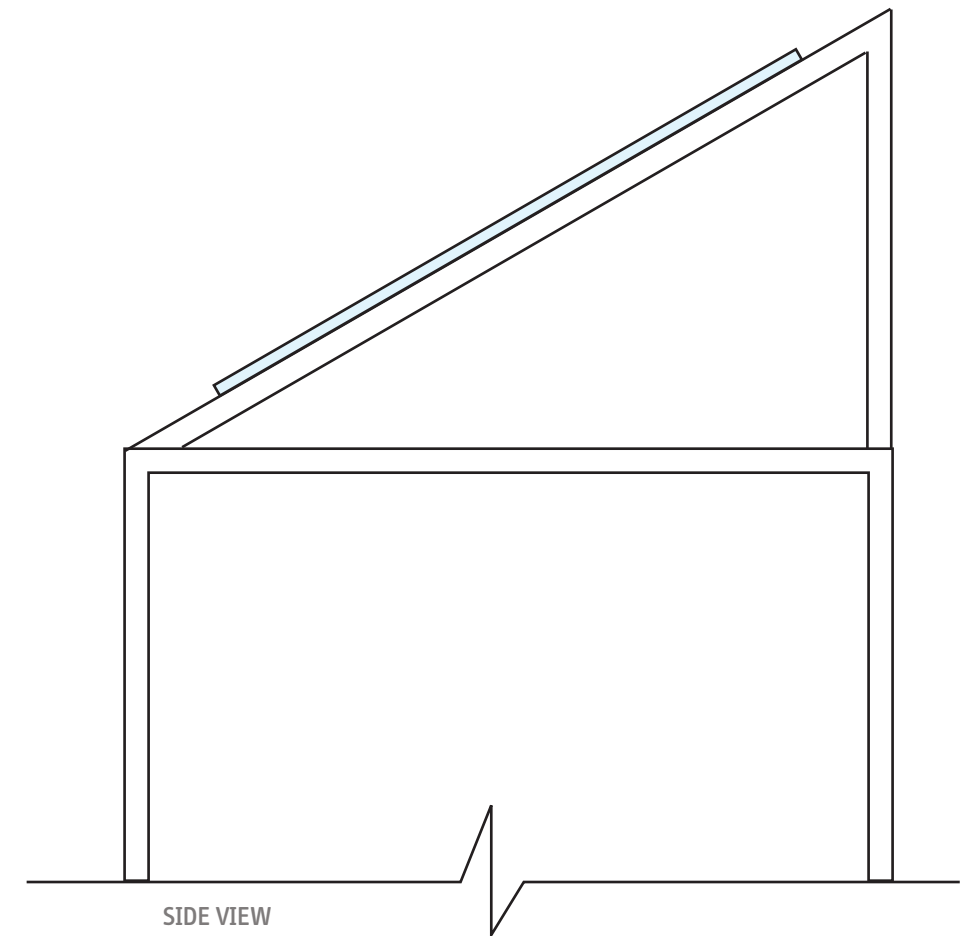
1. LED EDGE LIGHTING TO BE ON A SEPARATE CIRCUIT W/ DEDICATED SWITCH AND DIMMER.
3. WIRING HARNESSSES TO HAVE QUICK-DISCONNECTS AT JOINTS TO FACILITATE REMOVAL OF TOP RAILS.
4. LOCATION OF CONTROLS T.B.D. COORDINATE W/ CLIENT AND ARCHITECT.

John Smith meeting Dogue Indians

This is a paragraph comprised of fifty words. The text still needs to be written, and this should serve as a temporary placeholder only. This length is best for subtext or sidebars. Secondary messages on a panel, which support the main message. Sometimes, the main message can be fifty words.

CAPTION PLAQUES
(DESCRIBE ETCHED-GLASS SCENE BELOW)
DIRECT-PRINT ON THIN ALUMINUM
SATIN FINISH, EASED CORNERS
APPLIED TO TOP OF RAIL

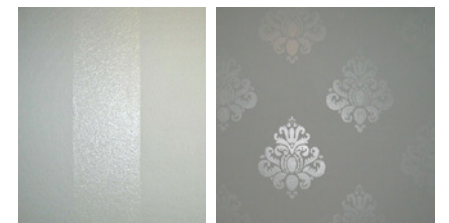
QUANTITY 6



1608



1608 signage rusty material



reference: paint sheen effect
High gloss w/ slightly darker hue,
coordinate with Designer.



East Wall:

- 1608 dimensional room title pin-mounted off wall
- Vinyl lettering quote
- Chesapeake Bay shape painted on wall in high-gloss sheen (dark outline TBD w/ sampling)
- location of Visitor Center indicated (vinyl icon)
- built in wall vitrines flanking monitor
- Fish Tank

WALL TEXT 01.01

Fish Tank Graphic Background, Props, and Graphic Rail:

- fabricator to print and install tank background graphic (must be coordinating with aquarium specialist)
- fabricator responsible for all props in the tank.
- HPL graphic reader rail (notes extinct fish and plants shown in tank graphic)
- Fish and tank accessories by others

Fish Tank Props:

Props to match reference images

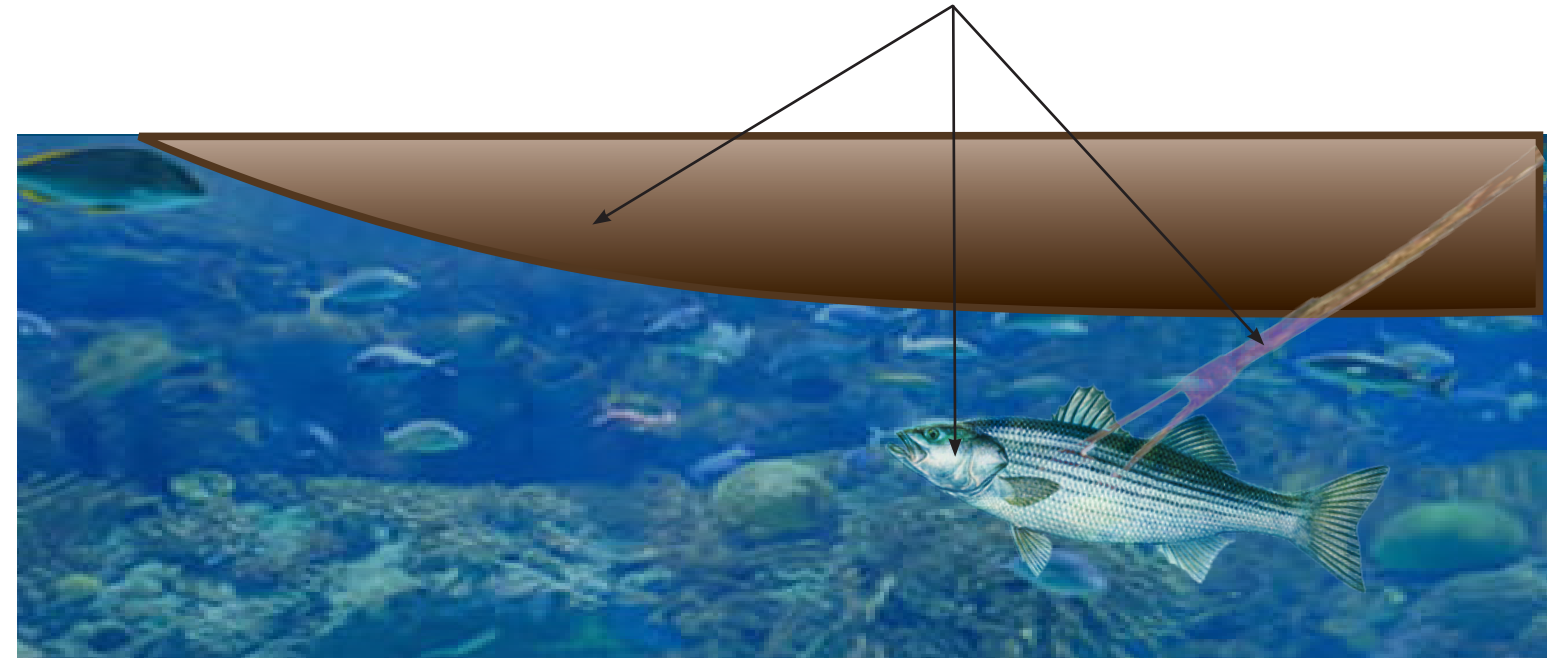


Spear with fish (1)



Scenic Canoe (portion from below)

Scenic Props: bottom of a canoe with a speared fish



HPL Reader Rail Graphic

84" x 9" Size



MAIN TITLE: RR 01.01

MAIN PANEL TEXT: RR 01.02

PANEL TITLE: RR 02.01

PANEL TEXT: RR 02.02

PANEL TITLE: RR 03.01

PANEL TEXT: RR 03.02

Tactile elements secured to reader rail

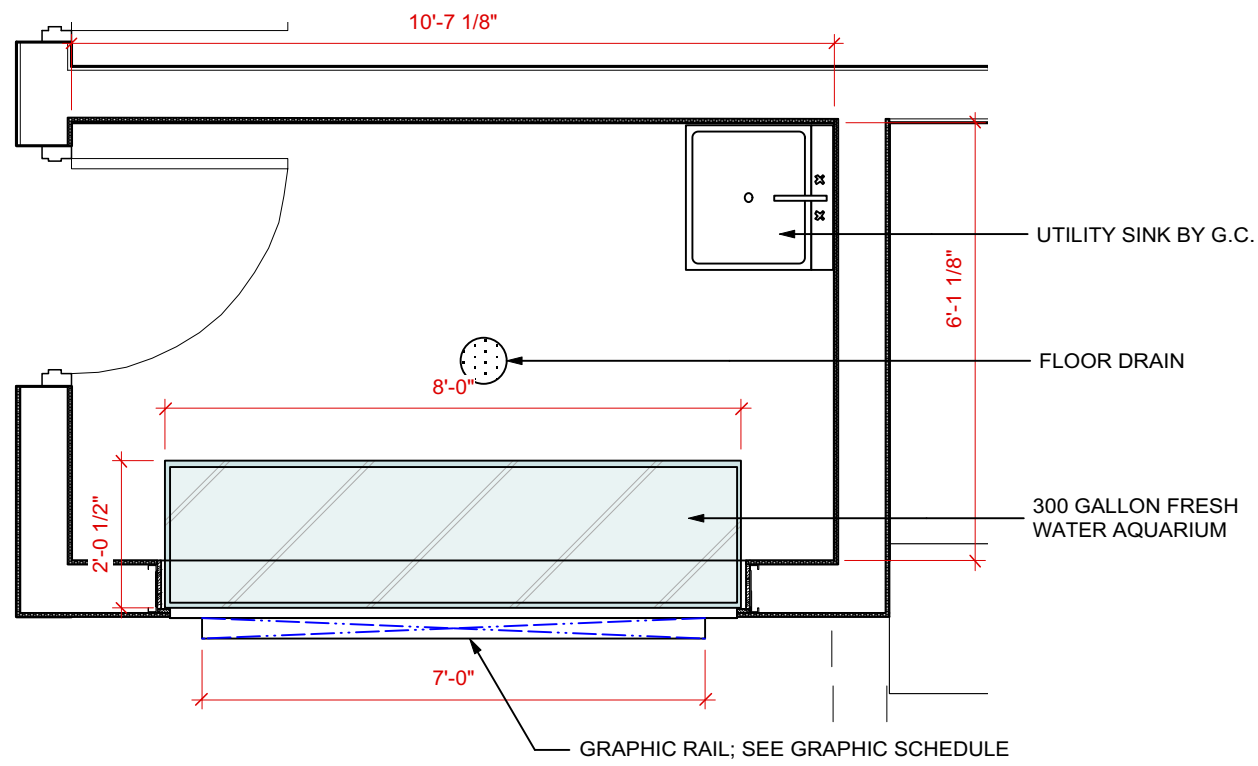
PANEL TITLE: RR 04.01

PANEL TEXT: RR 04.02

TACTILE LABEL: RR 04.03

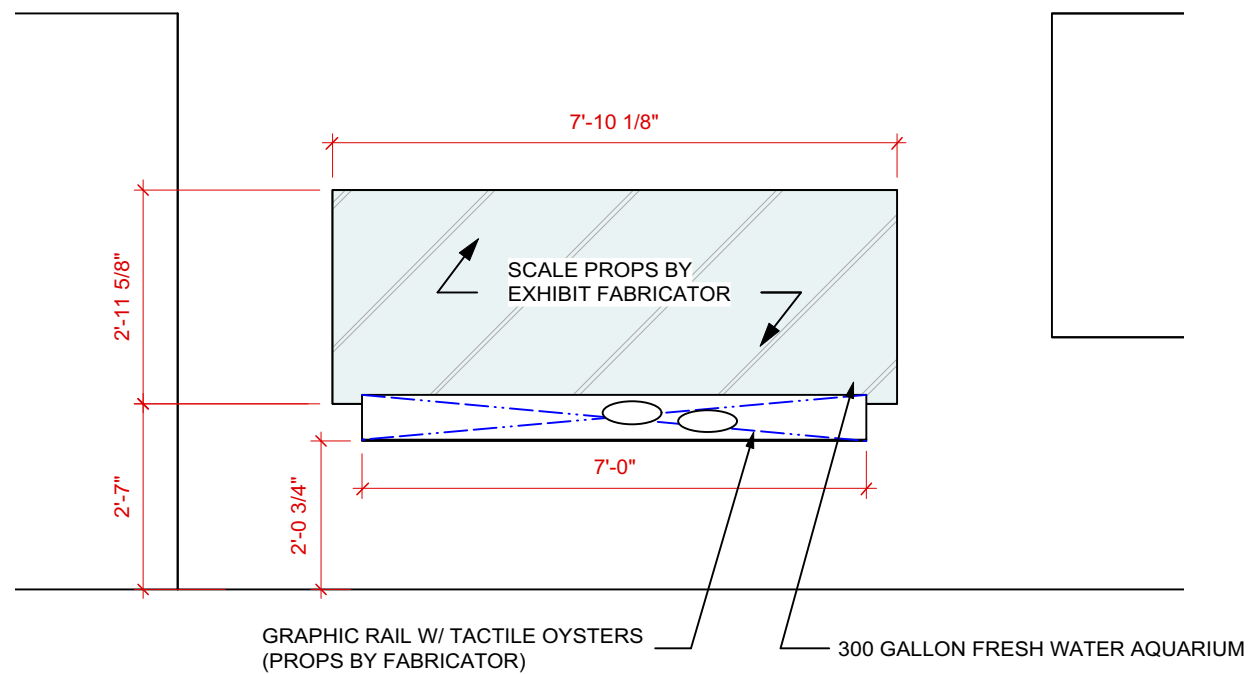
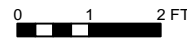
PANEL TITLE: RR 05.01

PANEL TEXT: RR 05.02

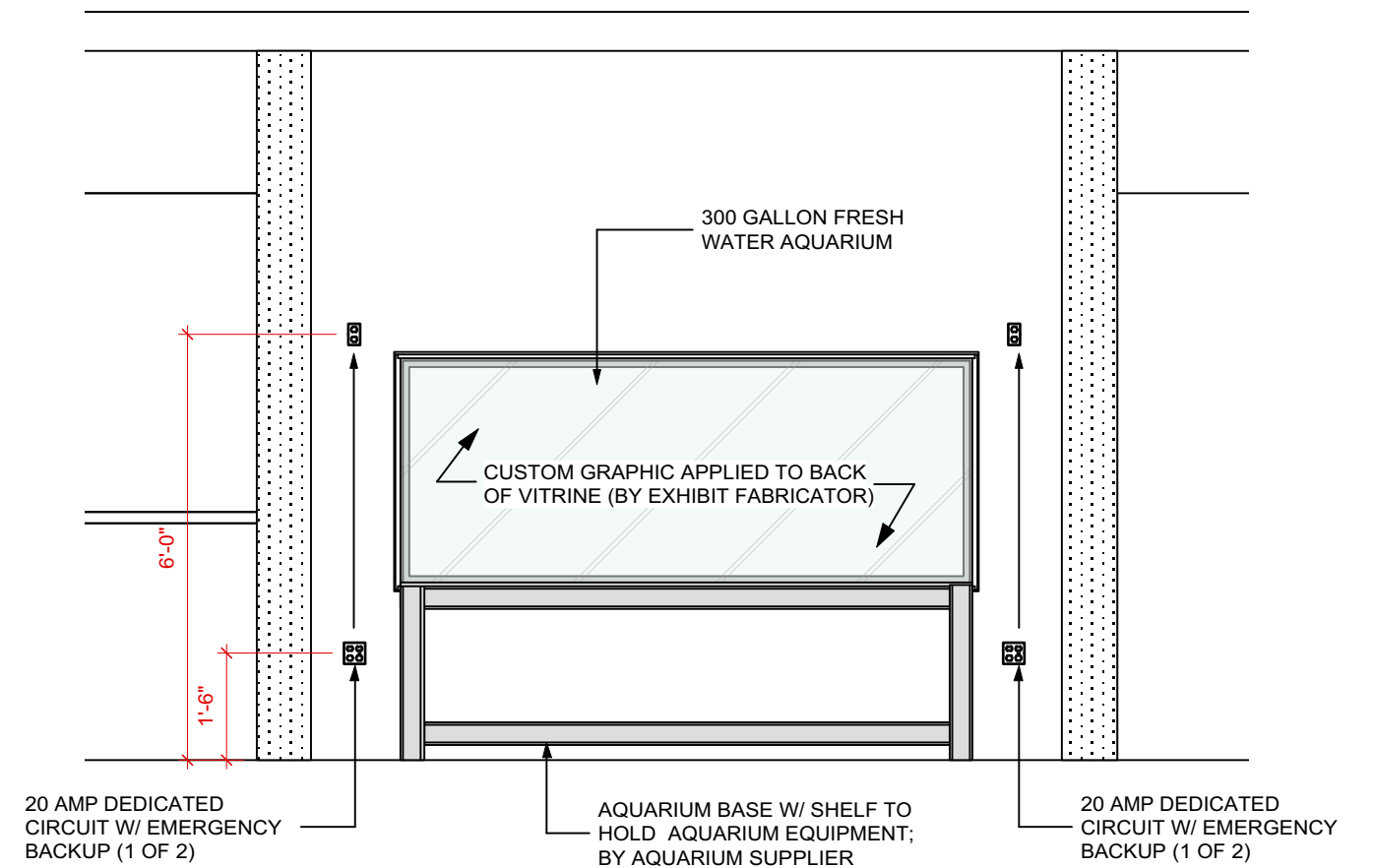


NOTE:
 LOCATE WATER SUPPLY, UTILITY SINK, DRAIN IN THIS ROOM. VERIFY LOCATION AND REQUIREMENTS OF AQUARIUM. EXACT LOCATIONS T.B.D.

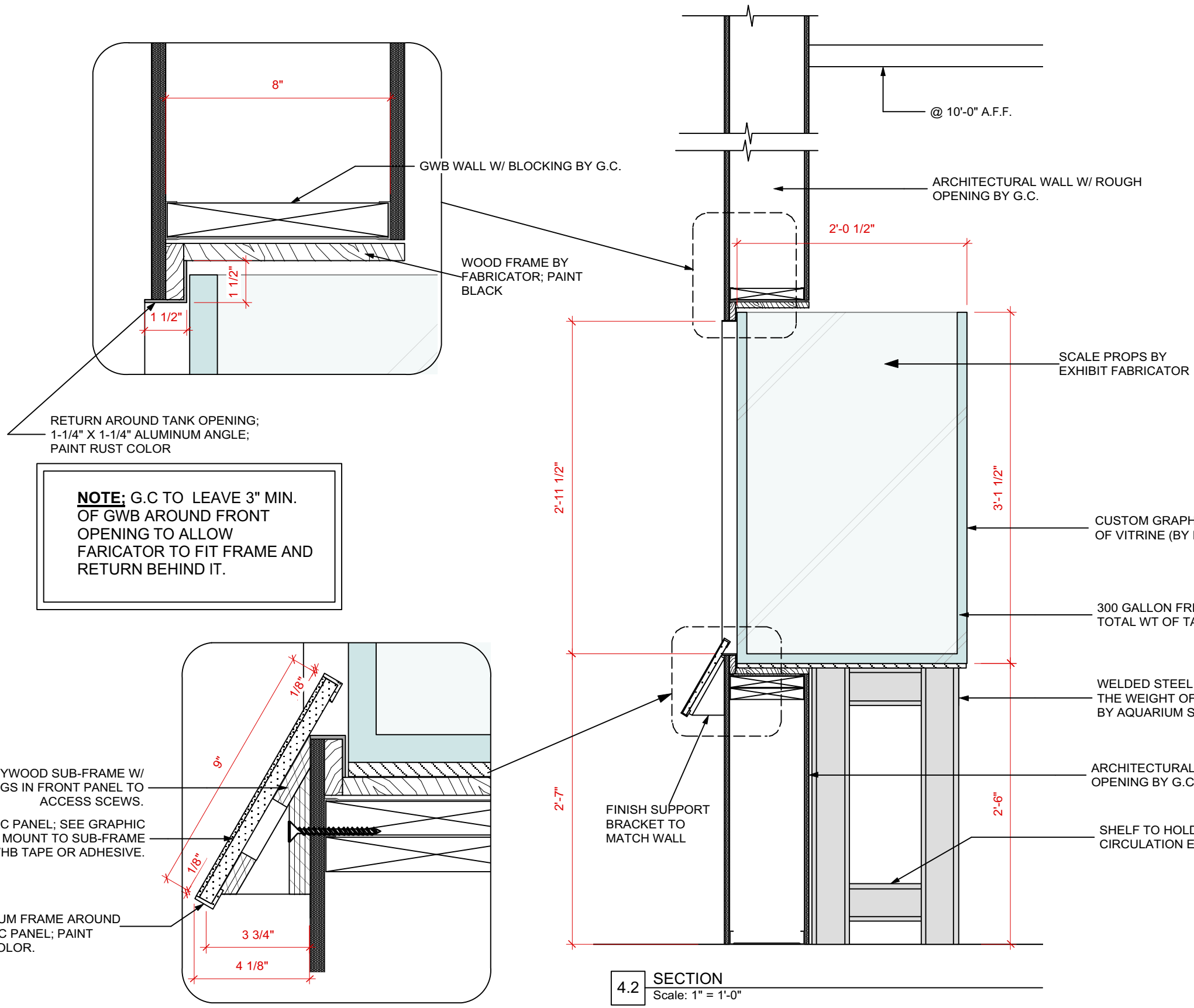
4 PLAN VIEW @ Aquarium
 Scale: 3/8" = 1'-0"



4.1 ELEVATION @ Aquarium
 Scale: 3/8" = 1'-0"



4.2 ELEVATION @ Rear of Aquarium
 Scale: 3/8" = 1'-0"



AQUARIUM SPECIFICATIONS

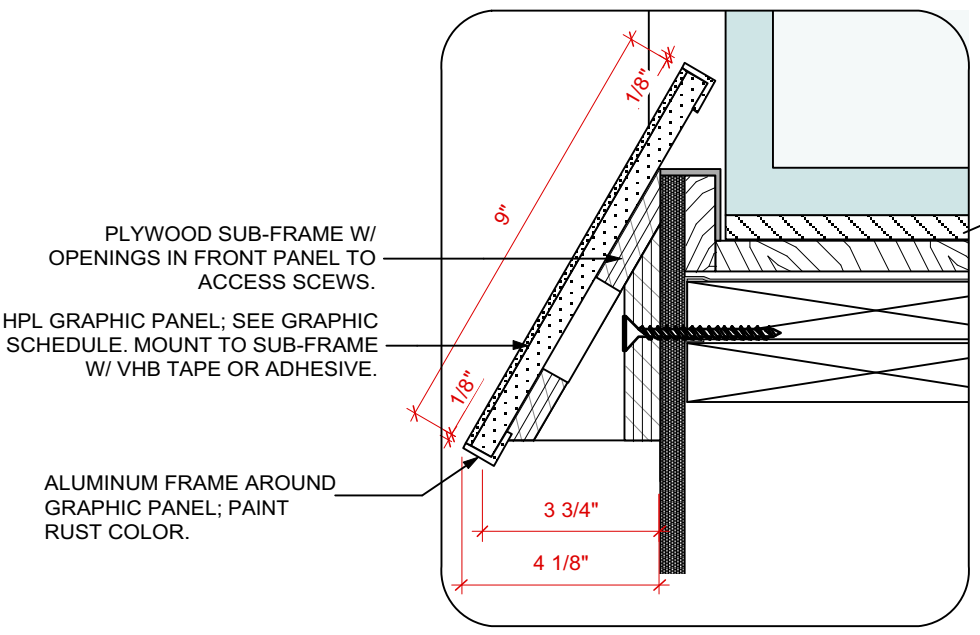
(PROVIDED BY NOVA AQUARIUM INC.)
 DIMENSIONS; 96" X 24.5" X 37.5"
 CAPACITY; TANK - 300 GAL.
 CONSTRUCTION; 1" GLASS
 FILTER TANK - 250 GALLONS
 TOTAL WT. OF TANK, WATER,
 EQUIP; 6,800#

EQUIPMENT MAY INCLUDE FILTRATION
 AND CIRCULATION PUMPS, HEATERS,
 LIGHTING, FANS, TIMERS. VERIFY POWER
 REQUIREMENTS AND PROVIDE ADEQUATE
 OUTLETS.

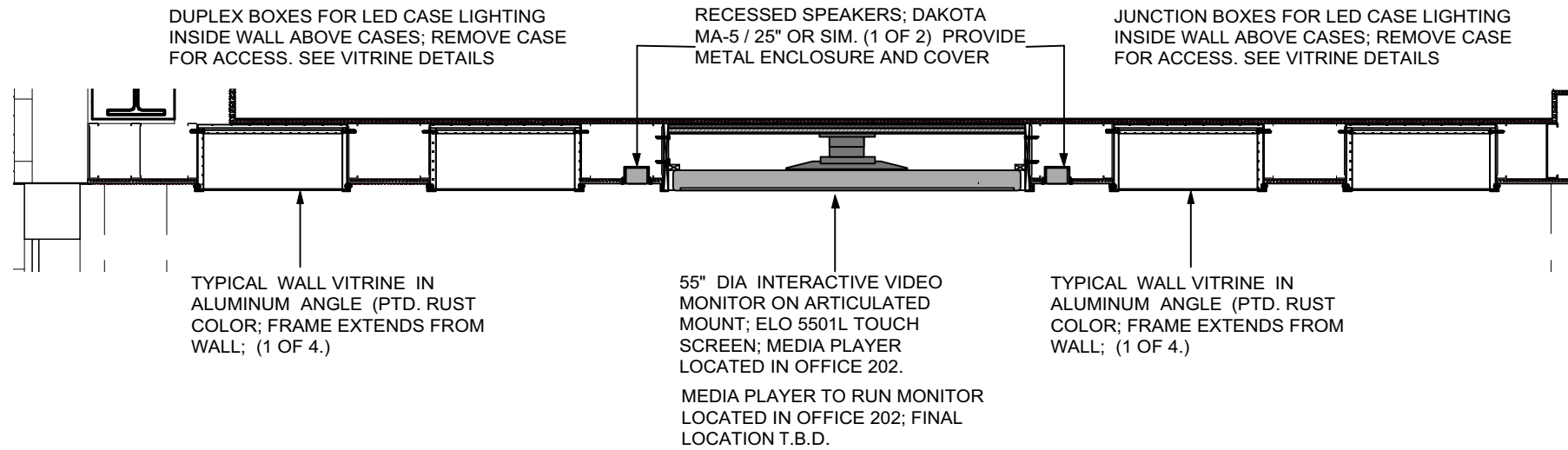
POWER SHOULD BE ON A DEDICATED
 CIRCUIT WITH EMERGENCY BACKUP.

NOVA AQUARIUMS
 STERLING, VA
www.novaaquarium.com

NOTE: G.C TO LEAVE 3" MIN.
 OF GWB AROUND FRONT
 OPENING TO ALLOW
 FABRICATOR TO FIT FRAME AND
 RETURN BEHIND IT.



4.2 SECTION
 Scale: 1" = 1'-0"



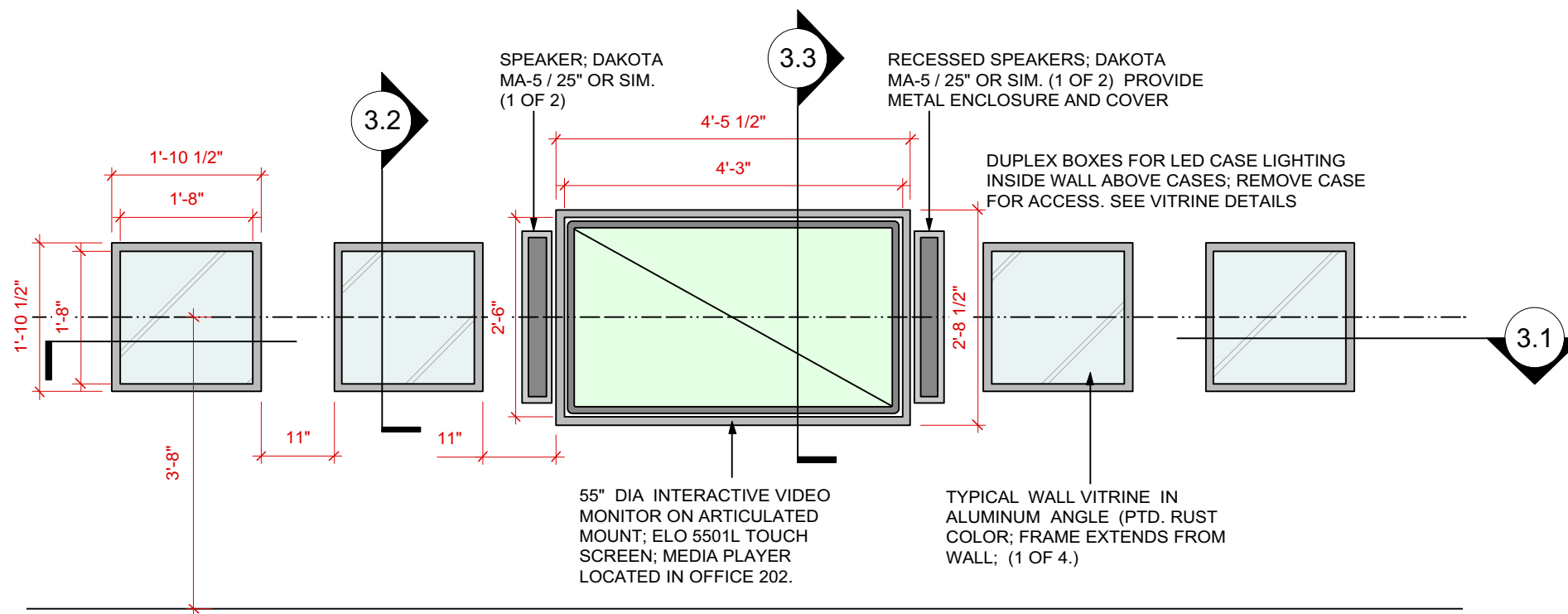
3.1 PLAN SECTION @ Interactive Area
Scale: 1/2" = 1'-0"



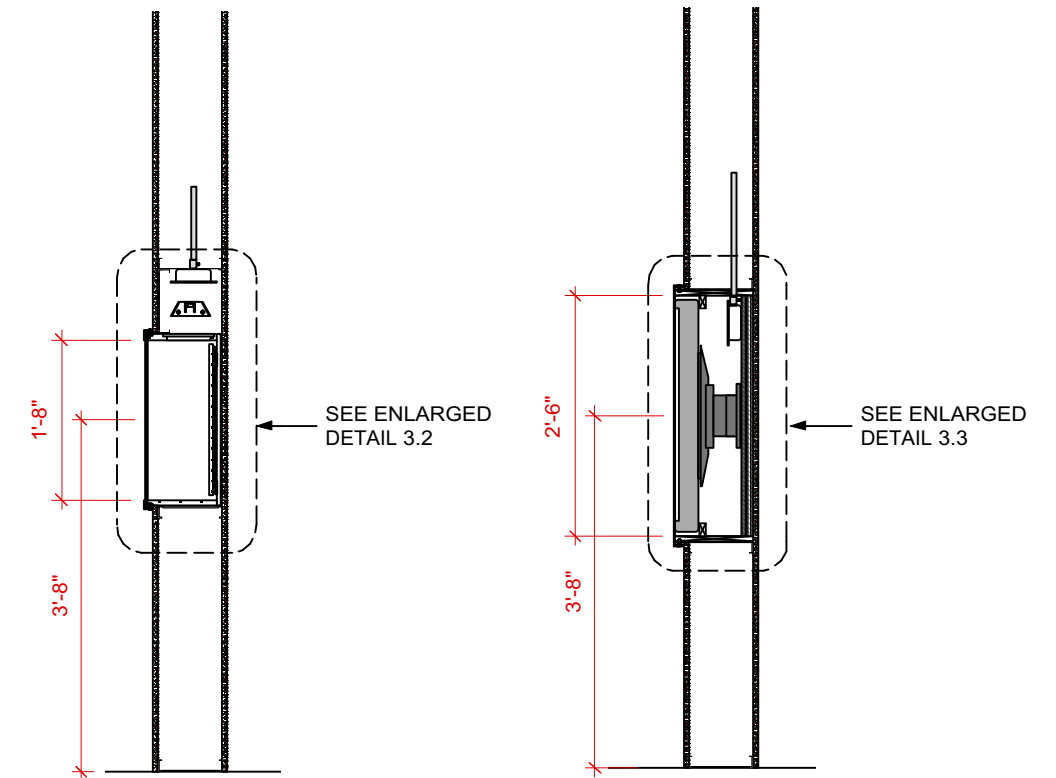
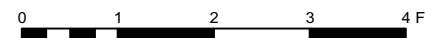
A-V HARDWARE NOTE:

EXHIBIT FABRICATOR TO PROVIDE TOUCHSCREEN MONITOR, SPEAKERS, CABLING, MEDIA PLAYER FOR A-V PROGRAM..

BUILDING A-V SUBCONTRACTOR TO PROVIDE, MEDIA PLAYER/DVD/SD UNIT, SWITCHING, CABLING FOR BRIDAL CONTENT. HE WILL INSTALL HIS EQUIPMENT AND LEAVE EXHIBIT CONTRACTOR INSTRUCTIONS FOR TYING THE TWO SYSTEMS TOGETHER



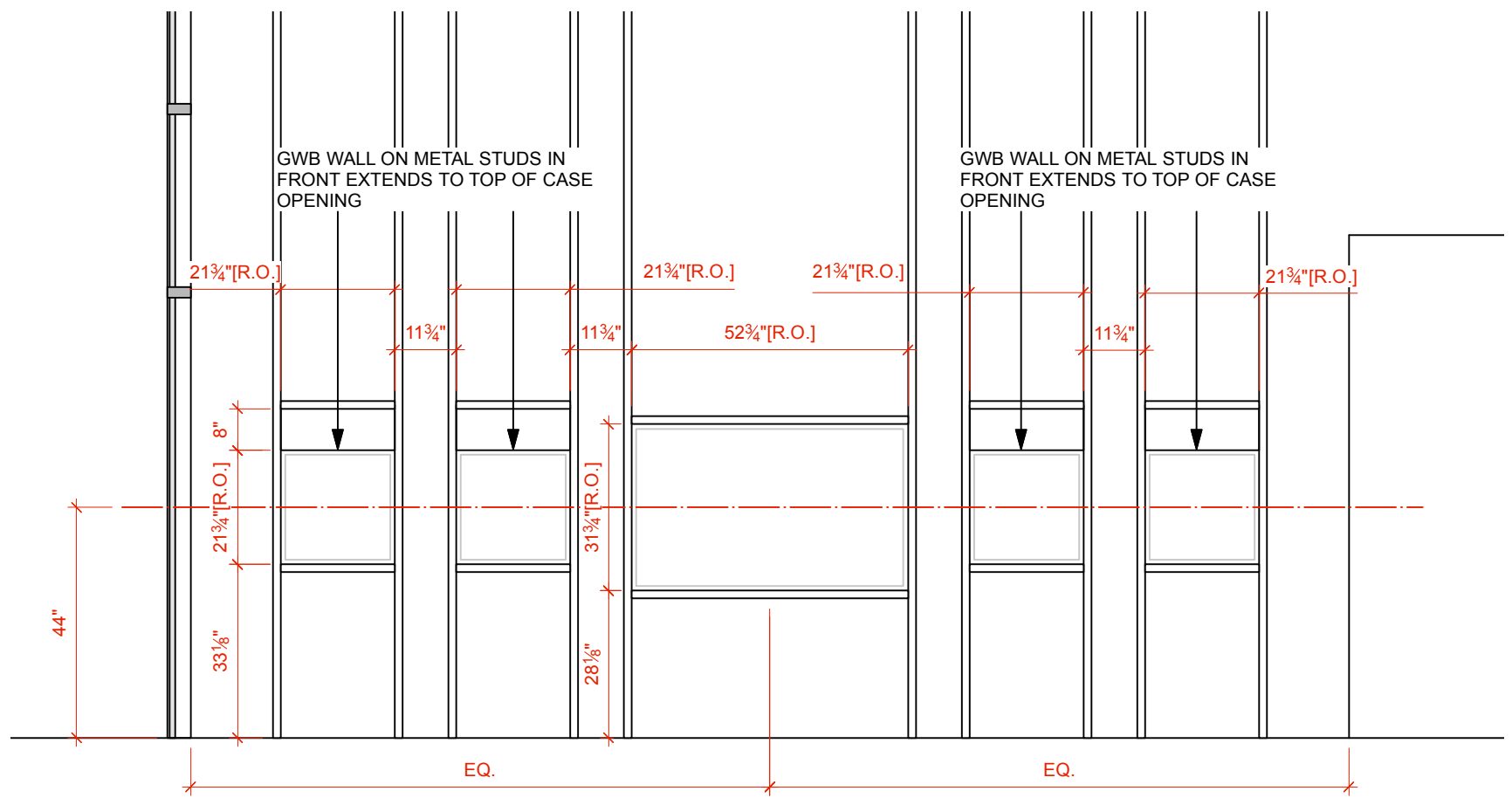
3 ELEVATION @ Interactive Area
Scale: 1/2" = 1'-0"



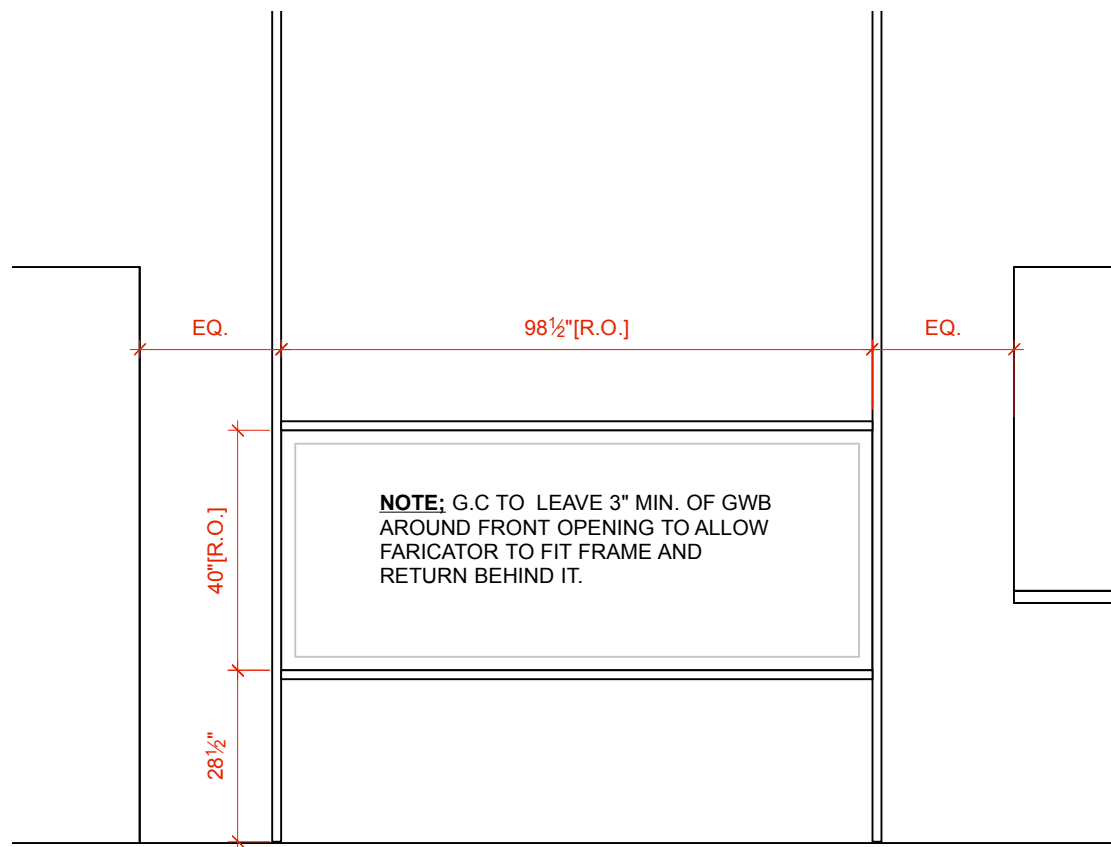
3.2 SECTION @ Typ. Vitrin
Scale: 1/2" = 1'-0"

3.3 SECTION @ Video Monitor
Scale: 1/2" = 1'-0"

WALL FRAMING BY GC



1 FRAMING LAYOUT @ Vitrines, AV Monitor
Scale: 3/8" = 1'-0"



2 FRAMING LAYOUT @ Aquarium
Scale: 3/8" = 1'-0"

GWB WALL ON 8" METAL STUDS;
BYG.C. EXTENDS TO TOP OF CASE
OPENING

DUPLEX RECEPTACLE BY G.C.

CASE IS ILLUMINATED WITH LED
STRIP LIGHT (SPEC. T.B.D.)
MOUNTED IN METAL SHADE

GLASS FITS IN WELDED ALUMINUM
ANGLE FRAME; SECURE W/ TOOLED
SECURITY SCREWS IN BRASS
INSERTS; PAINT RUST COLOR.

FROSTED GLASS DIFFUSER

INTERCHANGABLE GRAPHIC
PANEL; MOUNT W/ ZEE-CLIPS

ALUMINUM CHANNEL W/ PERF.
METAL BACK TO HOLD SHEET
DESSICANT (FROM ART-SORB)

GLASS FACE; 1/4" CLEAR LAMINATED
SAFETY GLASS.

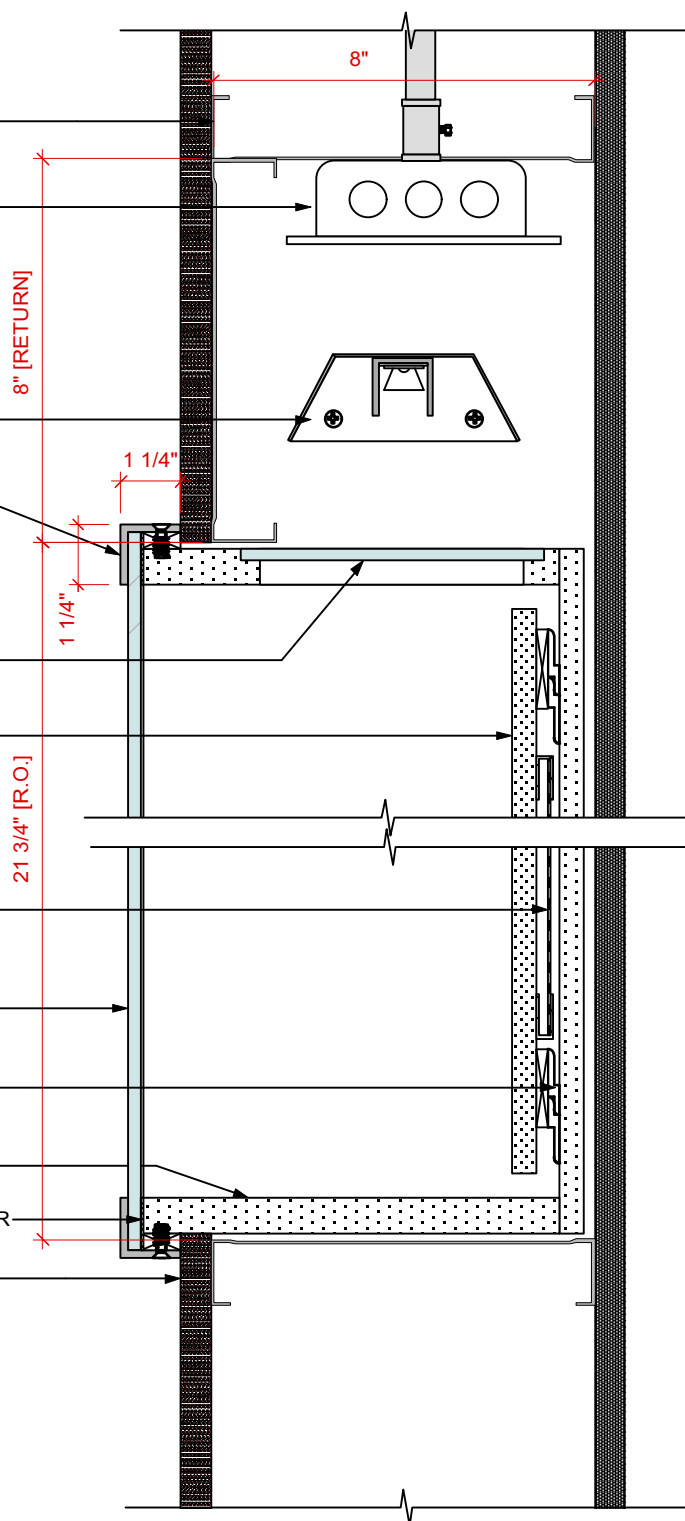
CASE BACK; 1/2" MEDITE II;
FINISH TO MATCH WALL
COLOR

CASE CONSTRUCTION; 3/4" MEDITE II;
FINISH TO MATCH WALL COLOR

EDP GASKET AROUND CASE PERIMETER

GWB WALL ON 8" METAL STUDS;
BYG.C.

FINISH NOTE: ALL INTERIOR
FINISHES AND FABRICS TO
MEET ARCHIVAL STANDARDS
FOR OFF-GASSING.



PAINT INTERIOR BLACK

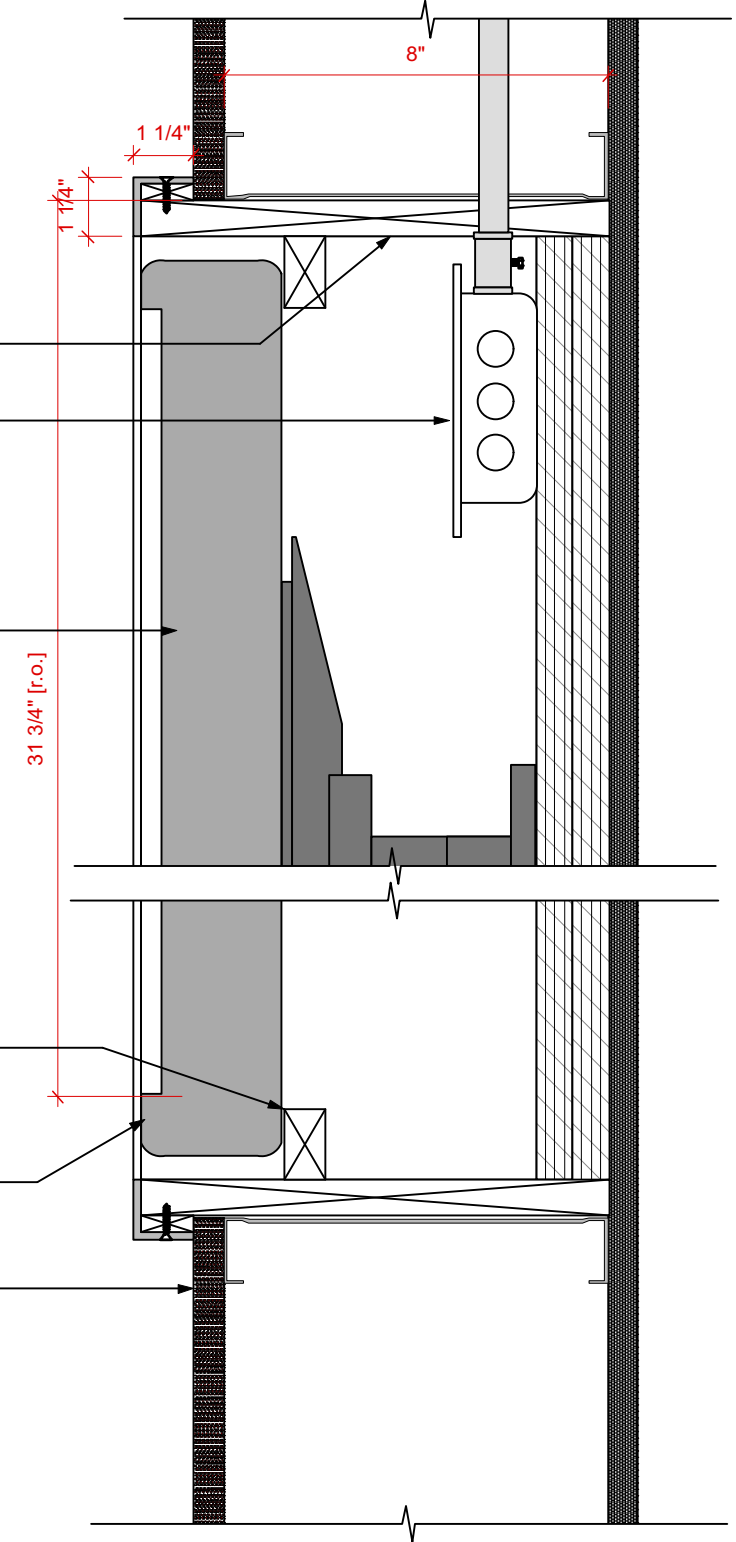
DUPLEX RECEPTACLE

55" DIA INTERACTIVE VIDEO
MONITOR ON ARTICULATED
MOUNT; ELO 5501L TOUCH
SCREEN; CONTROLS AND PLAYER
ARE LOCATED IN OFFICE 202.

STOP TO KEEP MONITOR IN POSITION

WELDED ALUM ANGLE FRAME
AROUND CASE; PAINT RUST
COLOR.

GWB WALL ON 8" METAL STUDS;
BYG.C.

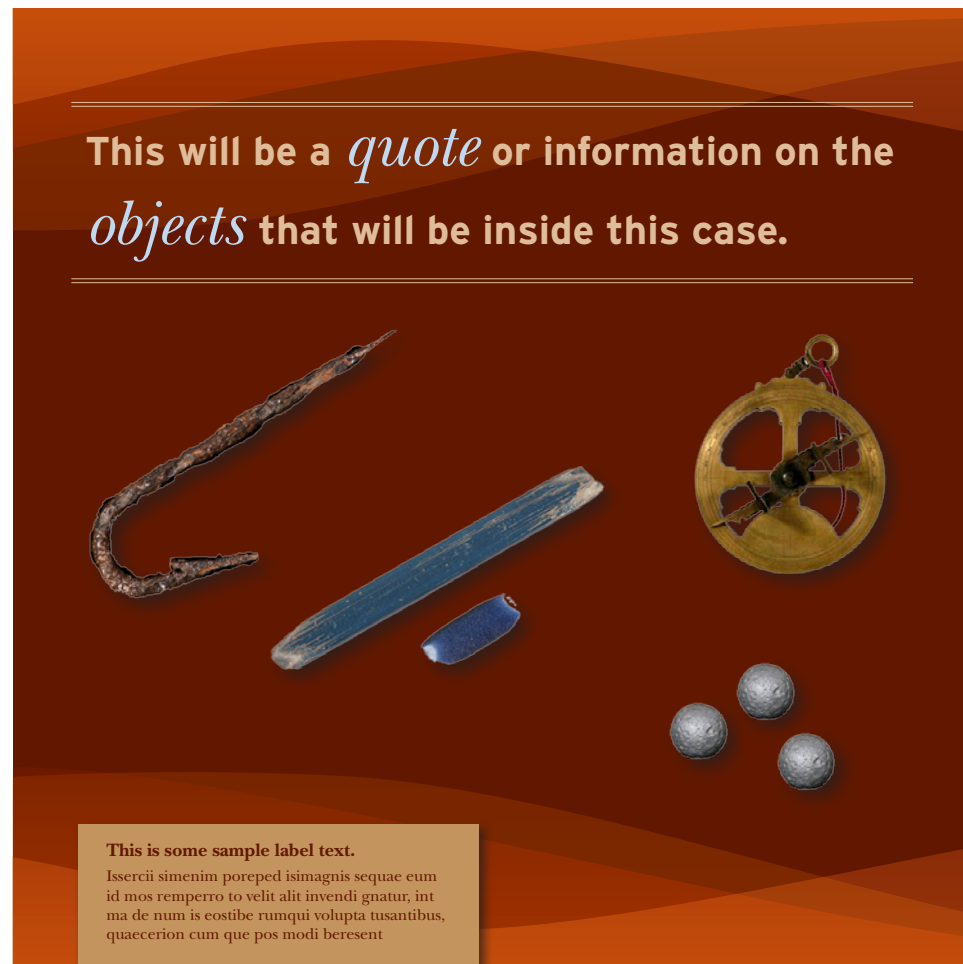


NOTE:

MEDIA PLAYER TO RUN VIDEO MONITOR
LOCATED IN OFFICE 202; FINAL
LOCATION T.B.D.

EXHIBIT FABRICATOR TO PROVIDE TOUCHSCREEN
MONITOR, SPEAKERS, CABLING, MEDIA PLAYER
FOR A-V PROGRAM..

Digital graphic wrapped on signblank approx 18" x 18"



John Smith

CASE QUOTE: CASE 01.01

CASE LABEL: CASE 01.02



Native Americans 1

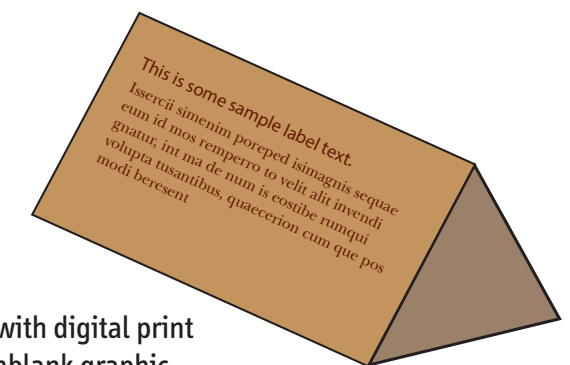
CASE QUOTE: CASE 02.01

CASE LABEL: CASE 02.02

Reference Photo for Mounts



Fabricator responsible for artifact mounts



Label Wedge :
Ptd mdf wedge with digital print
wrapped on signblank graphic
dft to wedge (Qty 4)

Digital graphic wrapped on signblank approx 18" x 18"



Native American 2

CASE QUOTE: CASE 03.01

CASE LABEL: CASE 03.02



100 Years of Park History

CASE QUOTE: CASE 04.01

CASE LABEL: CASE 04.02